

UNITED STATES
DEPARTMENT OF THE INTERIOR
BUREAU OF LAND MANAGEMENT

APPLICATION FOR PERMIT TO DRILL, DEEPEN, OR PLUG BACK

1A. TYPE OF WORK

DRILL ☒

DEEPEN ☐

PLUG BACK ☐

B. TYPE OF WELL

OIL
WELL ☒

GAS
WELL ☐

OTHER

SINGLE
ZONE ☒

MULTIPLE
ZONE ☐

2. NAME OF OPERATOR

Southland Royalty Company

3. ADDRESS OF OPERATOR

P. O. Drawer 570, Farmington, New Mexico 87499

4. LOCATION OF WELL (Report location clearly and in accordance with any State requirements.)*

At surface

(M) 1025' FSL & 840' FWL

At proposed prod. zone

975'

JUN 14 1985

14. DISTANCE IN MILES AND DIRECTION FROM NEAREST TOWN OR POST OFFICE*

12 Miles West of Lindrith, New Mexico

BUREAU OF LAND MANAGEMENT
FARMINGTON RESOURCE AREA

15. DISTANCE FROM PROPOSED*

LOCATION TO NEAREST
PROPERTY OR LEASE LINE, FT.
(Also to nearest drig. unit line, if any)

840'

16. NO. OF ACRES IN LEASE

2560

18. DISTANCE FROM PROPOSED LOCATION*

TO NEAREST WELL, DRILLING, COMPLETED,
OR APPLIED FOR, ON THIS LEASE, FT.

1600'

19. PROPOSED DEPTH

7550'

17. NO. OF ACRES ASSIGNED
TO THIS WELL

160

20. ROTARY OR CABLE TOOLS

Rotary

21. ELEVATIONS (Show ~~Vertical~~ ^{Top of} ~~Surface~~ ^{to} technical and

7154' GL procedural review pursuant to 43 CFR 3165.3

22. ~~and appeal pursuant to 43 CFR 3165.4~~

22. APPROX. DATE WORK WILL START*

August 30, 1985

23. DRILLING OPERATIONS AUTHORIZED ARE
SUBJECT TO COMPLIANCE WITH ATTACHED
GENERAL REQUIREMENTS

SIZE OF HOLE	SIZE OF CASING	WEIGHT PER FOOT	SETTING DEPTH	QUANTITY OF CEMENT
12-1/4"	New 8-5/8"	24#, K-55	200'	165 cu.ft. (Circulate to surface)
7-7/8"	New 4-1/2"	10.5#, K-55	7000'	Stage 1: 372 cuft (Cover Gallup)
7-7/8"	New 4-1/2"	11.6#, K-55	7000'-7550'	Stage 2: 218 cuft (Cvr Cliff House)
				Stage 3: 165 cuft (Cvr Ojo Alamo)

Surface formation is San Jose.

Top of Ojo Alamo sand is at 2691'.

Top of Pictured Cliffs sand is at 3101'.

Fresh water mud will be used to drill from surface to total depth.

It is anticipated that an IEL will be run from total depth to surface casing shoe and

GR-CDL/CNL will be run from total depth to 2500'.

No abnormal pressures or poisonous gases are anticipated in this well.

It is expected that this well will be drilled before September 1, 1985.

This depends on time required for approvals, rig availability and the weather.

Gas is dedicated.

IN ABOVE SPACE DESCRIBE PROPOSED PROGRAM: If proposal is to deepen or plug back, give data on present productive zone and proposed new productive zone. If proposal is to drill or deepen directionally, give pertinent data on subsurface locations and measured and true vertical depths. Give blowout preventer program, if any.

24.

SIGNED

TITLE

Dist. Operations Engineer

DATE June 13, 1985

(This space for Federal or State use)

PERMIT NO.

APPROVAL DATE

APPROVED BY

CONDITIONS OF APPROVAL, IF ANY:

TITLE

DATE

APPROVED
AS AMENDED

OIL CON. DIV
DIST. 3

NMOCC

*See Instructions On Reverse Side

M. MILLENBACH
AREA MANAGER

NEW MEXICO OIL CONSERVATION COMMISSION
WELL LOCATION AND ACREAGE DEDICATION PLAT

Form C-102
Supersedes C-128
Effective 1-1-65

All distances must be from the outer boundaries of the Section.

Operator SOUTHLAND ROYALTY COMPANY		Lease MEDIO CANYON		Well No. 7
Unit Letter M	Section 26	Township 24N	Range 4W	County Rio Arriba
Actual Footage Location of Well:				
975 feet from the South line and		840' feet from the West line		
Ground Level Elev: 7154' GL	Producing Formation Gallup-Dakota	Poo: West Lindrith	Dedicated Acreage: 160 Acres	

1. Outline the acreage dedicated to the subject well by colored pencil or hachure marks on the plat below.
2. If more than one lease is dedicated to the well, outline each and identify the ownership thereof (both as to working interest and royalty).
3. If more than one lease of different ownership is dedicated to the well, have the interests of all owners been consolidated by communitization, unitization, force-pooling, etc?

☐ Yes ☐ No If answer is "yes," type of consolidation _____

If answer is "no," list the owners and tract descriptions which have actually been consolidated. (Use reverse side of this form if necessary.) _____

No allowable will be assigned to the well until all interests have been consolidated (by communitization, unitization, forced-pooling, or otherwise) or until a non-standard unit, eliminating such interests, has been approved by the Commission.

		<p>RECEIVED</p> <p>JUN 27 1985</p> <p>BUREAU OF LAND MANAGEMENT</p> <p>FARMINGTON RESOURCE AREA</p>
		<p>Sec.</p>
		<p>26</p> <p>RECEIVED</p> <p>AUG 05 1985</p> <p>OIL CON. DIV.</p> <p>DIST. 3</p>

Scale: 1"=1000'

CERTIFICATION

I hereby certify that the information contained herein is true and complete to the best of my knowledge and belief.

Name
C. Terry Hobbs

Position
District Operations Engineer

Company
Southland Royalty Company

Date
June 25, 1985

I hereby certify that the well location shown on this plat was plotted from field notes of actual surveys made by me or under my supervision, and that the same is true and correct to the best of my knowledge and belief.

Surveyed: **12-28-1981**

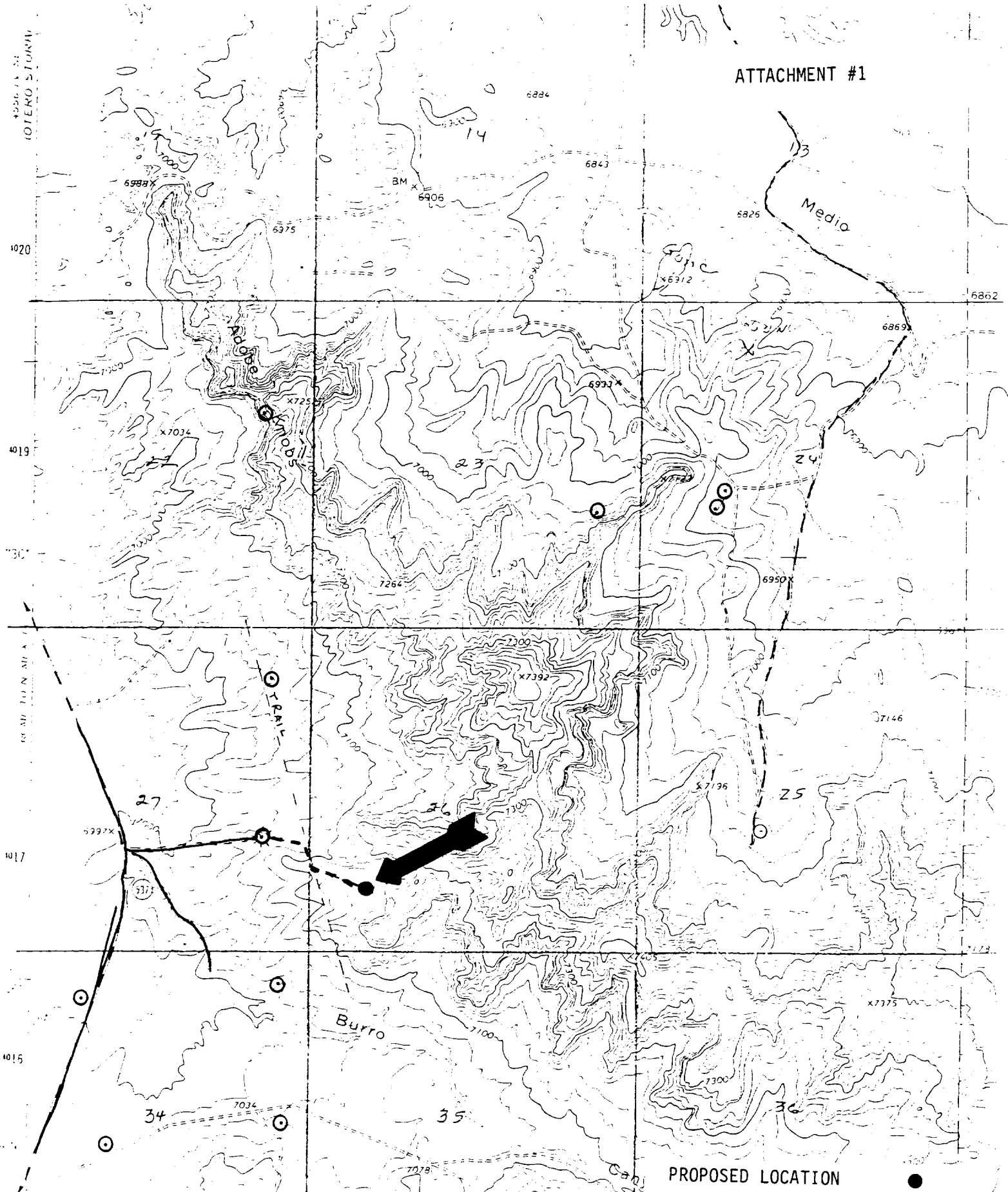
Date Surveyed
Re-issued May 30, 1985

Registered Professional Engineer
and Land Surveyor

Fred B. Kerr Jr.

Certificate No. **3950**

ATTACHMENT #1



Vicinity Map for
SOUTHLAND ROYALTY COMPANY #7 MEDIO CANYON
1025' FSL 840' FWL Sec. 26-T24N-R4W
RIO ARriba COUNTY, NEW MEXICO

PROPOSED LOCATION
EXISTING LOCATIONS
PROPOSED ROAD
EXISTING ROADS

