

UNITED STATES  
DEPARTMENT OF THE INTERIOR  
GEOLOGICAL SURVEY

## APPLICATION FOR PERMIT TO DRILL, DEEPEN, OR PLUG BACK

## 1a. TYPE OF WORK

DRILL ☒DEEPEN ☐PLUG BACK ☐

## b. TYPE OF WELL

OIL  
WELL ☒GAS  
WELL ☐OTHER ☐SINGLE  
ZONE ☒MULTIPLE  
ZONE ☐

## 2. NAME OF OPERATOR

Mobil Producing TX. &amp; N.M. Inc.

## 3. ADDRESS OF OPERATOR

P. O. Box 633, Midland, Texas 79702

4. LOCATION OF WELL (Report location clearly and in accordance with any State requirements\*)  
At surface

1850 FNL; 1850' FEL of Sec. 4

At proposed prod. zone

Same as surface

## 14. DISTANCE IN MILES AND DIRECTION FROM NEAREST TOWN OR POST

6 miles west of Lindrith, NM

## 15. DISTANCE FROM PROPOSED\*

LOCATION TO NEAREST  
PROPERTY OR LEASE LINE, FT.  
(Also to nearest drlg. unit line, if any)

3170'

18. DISTANCE FROM PROPOSED LOCATION\*  
TO NEAREST WELL, DRILLING, COMPLETED,  
OR APPLIED FOR, ON THIS LEASE, FT.

5481'

## 21. ELEVATIONS (Show whether DF, RT, GR, etc.)

7120' GL

DRILLING OPERATIONS AUTHORIZED ARE

## 23. 7148 SUBJECT TO COMPLIANCE WITH ATTACHED

"GENERAL REQUIREMENTS"

PROPOSED CASING AND CEMENTING PROGRAM

This action is subject to technical and  
procedural review pursuant to 43 CFR 3165.3  
and appeal pursuant to 43 CFR 3165.4.

SIZE OF HOLE	SIZE OF CASING	WEIGHT PER FOOT	SETTING DEPTH
12 1/4	9-5/8	36 H40	0 - 400
8-3/4	5 1/2	15.5 K55	0 - 7100

1. Circulate to surface
2. Circulate to surface

## CEMENTING PROGRAM:

1. Class B with 2% CaCl<sub>2</sub>
2. Class B

## LOGGING PROGRAM:

CNL-FDC-CAL-GR	TD - 3300'
BHC-SONIC-CAL-GR	TD - 3300'
DIL-SP-GR	TD - 3300'

## MUD PROGRAM:

DEPTH	MUD TYPE	MUD WT.	VISCOSITY	WATER LOSS
0 - 400	FW-Spud	8.5 - 9.0	32 - 38	N/C
400 - 6000'	FW	8.4 - 9.4	28 - 35	N/C
6000 - 7100'	FW-Ge1	8.6 - 9.4	32 - 38	±20

## BLOWOUT PREVENTOR PROGRAM:

See Attached

IN ABOVE SPACE DESCRIBE PROPOSED PROGRAM: If proposal is to deepen or plug back, give data on present productive zone and proposed new productive zone. If proposal is to drill or deepen directionally, give pertinent data on subsurface locations and measured and true vertical depths. Give blowout preventer program, if any.

24.

SIGNED C. A. Stone for G. E. Tate TITLE Env. & Reg. Manager DATE June 17, 1985

(This space for Federal or State office use)

PERMIT NO. \_\_\_\_\_

APPROVAL DATE \_\_\_\_\_

APPROVED BY \_\_\_\_\_

CONDITIONS OF APPROVAL, IF ANY: \_\_\_\_\_

APPROVED  
AS AMENDEDDATE AUG 15 1985  
/s/ J. Stan McKeefor M. MILLENBACH  
AREA MANAGEROIL CON. DIV.  
DIST. 3

See Instructions On Reverse Side

NMOCC

**NEW MEXICO OIL CONSERVATION COMMISSION  
WELL LOCATION AND ACREAGE DEDICATION PLAT**

Form C-102  
Supersedes C-128  
Effective 1-1-65

All distances must be from the outer boundaries of the Section.

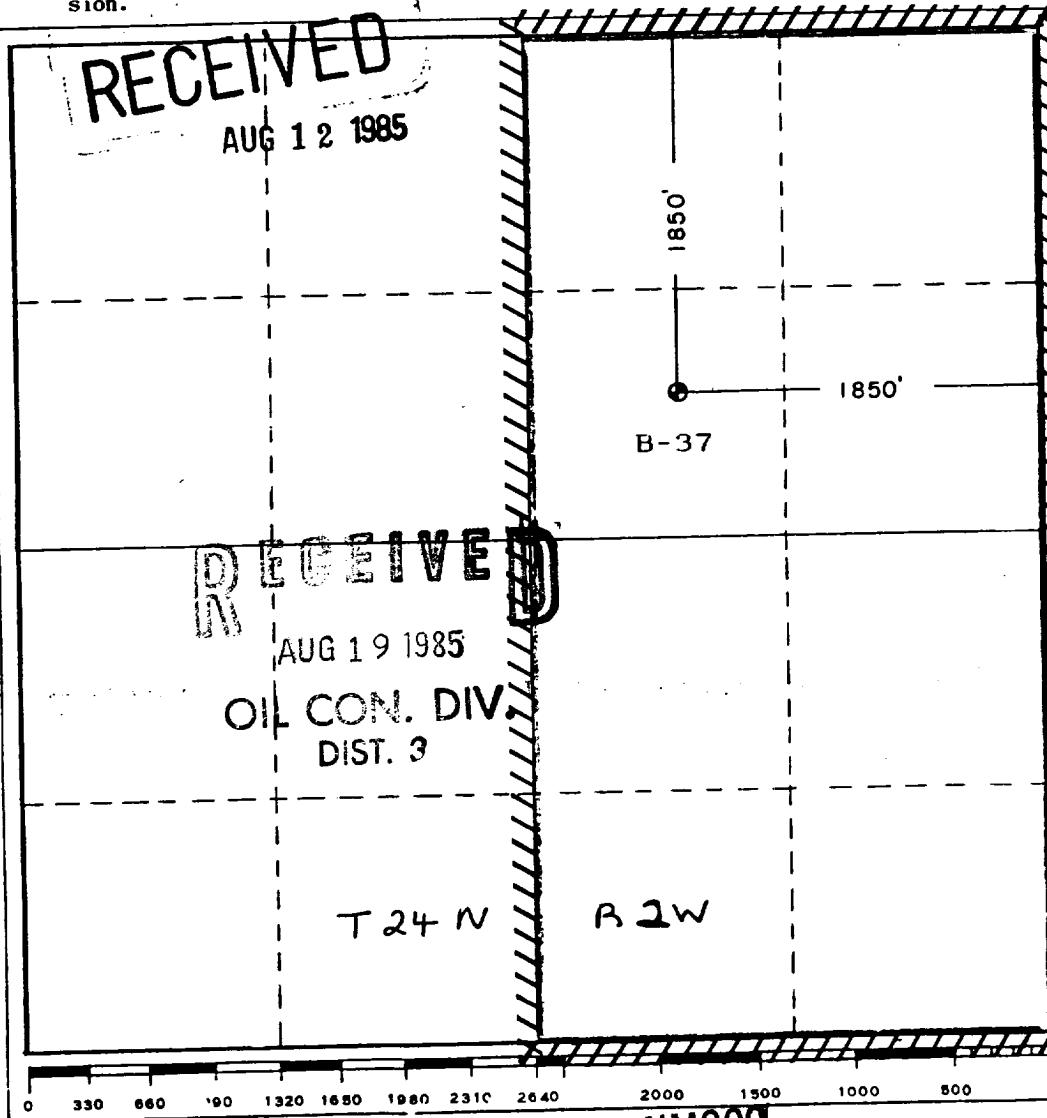
Operator <b>Mobil Producing TX. &amp; N.M. INC</b>			Lease <b>Lindrith B Unit</b>		Well No. <b>37</b>
Unit Letter <b>G</b>	Section <b>4</b>	Township <b>T.24N.</b>	Range <b>R.2W.</b>	County <b>Rio Arriba</b>	
Actual Footage Location of Well: <div style="display: flex; justify-content: space-between;"> <span>1850 feet from the <b>North</b> line and</span> <span>1850 feet from the <b>East</b> line</span> </div>					
Ground Lvel Elev. <b>7148</b>	Producing Formation <b>Gallup</b>		Pool <b>San Juan Manos EXT Undesignated</b>	Dedicated Acreage: <b>320 E-329.84 Acres</b>	

1. Outline the acreage dedicated to the subject well by colored pencil or hachure marks on the plat below.
2. If more than one lease is dedicated to the well, outline each and identify the ownership thereof (both as to working interest and royalty).
3. If more than one lease of different ownership is dedicated to the well, have the interests of all owners been consolidated by communitization, unitization, force-pooling, etc?

☒ Yes    ☐ No    If answer is "yes," type of consolidation    **Unitization**

If answer is "no," list the owners and tract descriptions which have actually been consolidated. (Use reverse side of this form if necessary.)

No allowable will be assigned to the well until all interests have been consolidated (by communitization, unitization, forced-pooling, or otherwise) or until a non-standard unit, eliminating such interests, has been approved by the Commission.



**CERTIFICATION**

I hereby certify that the information contained herein is true and complete to the best of my knowledge and belief.

*C. A. Stone for*

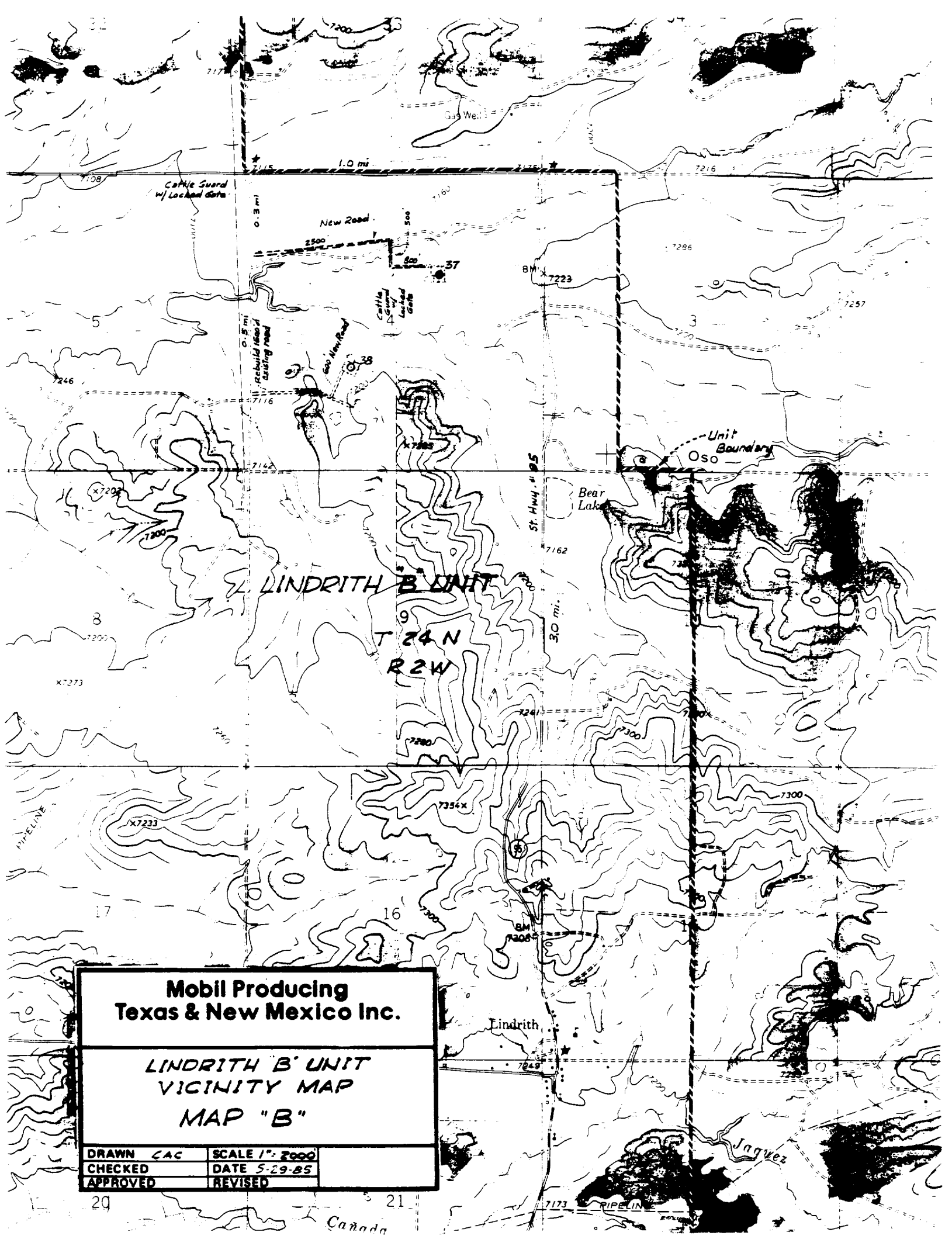
Name  
**G. E. Tate**  
Position  
**Env. & Reg. Manager**  
Company  
**Mobil Producing Tx. & NM, Inc**  
Date  
**July 11, 1985**

I hereby certify that the well location shown on this plat was plotted from field notes of actual surveys made by me or under my supervision, and that the same is true and correct to the best of my knowledge and belief.

Date Surveyed  
**May 30, 1985**

Registered Professional Engineer and/or Land Surveyor  
*[Signature]*  
Certificate No.  
**6256**

**NMOCC**



**Mobil Producing  
Texas & New Mexico Inc.**

**LINDRITH B' UNIT  
VICINITY MAP  
MAP "B"**

DRAWN	CAC	SCALE	1" = 2000'
CHECKED		DATE	5-29-85
APPROVED		REVISED	

UNITED STATES  
DEPARTMENT OF THE INTERIOR  
GEOLOGICAL SURVEY

SUNDRY NOTICES AND REPORTS ON WELLS

(Do not use this form for proposals to drill or to deepen or plug back to a different reservoir. Use Form 9-331-C for such proposals.)

1. oil ☒ gas ☐ other ☐  
well well

2. NAME OF OPERATOR  
Mobil Producing TX & NM Inc.

3. ADDRESS OF OPERATOR  
P. O. Box 633, Midland, Texas 79702

4. LOCATION OF WELL (REPORT LOCATION CLEARLY. See space 17 below.)

AT SURFACE: 1850' FNL; 1850' FEL, Sec. 4

AT TOP PROD. INTERVAL: Same

AT TOTAL DEPTH: Same

16. CHECK APPROPRIATE BOX TO INDICATE NATURE OF NOTICE, REPORT, OR OTHER DATA

REQUEST FOR APPROVAL TO:

TEST WATER SHUT-OFF ☐  
FRACTURE TREAT ☐  
SHOOT OR ACIDIZE ☐  
REPAIR WELL ☐  
PULL OR ALTER CASING ☐  
MULTIPLE COMPLETE ☐  
CHANGE ZONES ☐  
ABANDON\* ☐

SUBSEQUENT REPORT OF:

☐  
☐  
☐  
☐  
☐  
☐  
☐  
☐

RECEIVED

JUL 29 1985

(NOTE: Report results of multiple completion or zone change on Form 9-330.)

BUREAU OF LAND MANAGEMENT  
FARMINGTON RESOURCE AREA

(other) Change cement program and correct acreage dedication

17. DESCRIBE PROPOSED OR COMPLETED OPERATIONS (Clearly state all pertinent details, and give pertinent dates, including estimated date of starting any proposed work. If well is directionally drilled, give subsurface locations and measured and true vertical depths for all markers and zones pertinent to this work.)\*

Because the State of New Mexico Oil Conservation Division will not allow the use of foam cement, we are amending our cement program to the following:

- 2%
- 240 Cu. Ft. Class B +  $CaCl_2$  circulated to surface.
  - (a) 1st stage - 380 Cu. Ft. of Class B + Pacesetter lite circulated to 6000' where DV tool is set.  
(b) 2nd stage - 1270 Cu. Ft. of Class B circulated from 6000' at DV tool to surface.

The correct acreage dedication for this well is 320 acres.

Subsurface Safety Valve: Manu. and Type \_\_\_\_\_ Set @ \_\_\_\_\_ Ft.

18. I hereby certify that the foregoing is true and correct

SIGNED C. A. Stone for G. E. Tate TITLE Env. & Reg. Mgr. DATE July 23, 1985

(This space for Federal or State office use)

APPROVED BY \_\_\_\_\_  
CONDITIONS OF APPROVAL IF ANY: \_\_\_\_\_

RECEIVED

AUG 19 1985

OIL CON. DIV. Instructions on Reverse Side  
DIST. 3

NMOCC

APPROVED  
AS AMENDED

AUG 15 1985  
/s/ L. Stan McKee

for M. MILLENBACH  
AREA MANAGER

## Instructions

**General:** This form is designed for submitting proposals to perform certain well operations, and reports of such operations when completed, as indicated, on Federal and Indian lands pursuant to applicable Federal law and regulations, and, if approved or accepted by any State, on all lands in such State, pursuant to applicable State law and regulations. Any necessary special instructions concerning the use of this form and the number of copies to be submitted, particularly with regard to local, area, or regional procedures and practices, either are shown below or will be issued by, or may be obtained from, the local Federal and/or State office.

**Item 4:** If there are no applicable State requirements, locations on Federal or Indian land should be described in accordance with Federal requirements. Consult local State or Federal office for specific instructions.

**Item 17:** Proposals to abandon a well and subsequent reports of abandonment should include such special information as is required by local Federal and/or State offices. In addition, such proposals and reports should include reasons for the abandonment; data on any former or present productive zones, or other zones with present significant fluid contents not sealed off by cement or otherwise; depths (top and bottom) and method of placement of cement plugs; mud or other material placed below, between and above plugs; amount, size, method of parting of any casing, liner or tubing pulled and the depth to top of any left in the hole; method of closing top of well; and date well site conditioned for final inspection looking to approval of the abandonment.