

UNITED STATES
DEPARTMENT OF THE INTERIOR
GEOLOGICAL SURVEY

APPLICATION FOR PERMIT TO DRILL, DEEPEN, OR PLUG BACK

1a. TYPE OF WORK
DRILL ☒ DEEPEN ☐ PLUG BACK ☐

b. TYPE OF WELL
OIL WELL ☒ GAS WELL ☐ OTHER ☐
SINGLE ZONE ☒ MULTIPLE ZONE ☐

2. NAME OF OPERATOR
COTTON PETROLEUM CORPORATION

3. ADDRESS OF OPERATOR
3773 CHERRY CREEK DRIVE NORTH #750, DENVER, CO 80209

4. LOCATION OF WELL (Report location clearly and in accordance with any State requirements)
At surface 990' FSL 2310' FEL

At proposed prod. zone

14. DISTANCE IN MILES AND DIRECTION FROM NEAREST TOWN OR POST OFFICE*

BUREAU OF LAND MANAGEMENT

15. DISTANCE FROM PROPOSED*
LOCATION TO NEAREST
PROPERTY OR LEASE LINE, FT.
(Also to nearest drlg. unit line, if any)

16. BUREAU OF LAND MANAGEMENT
2665

18. DISTANCE FROM PROPOSED LOCATION*
TO NEAREST WELL, DRILLING, COMPLETED,
OR APPLIED FOR, ON THIS LEASE, FT.

19. PROPOSED DEPTH
7385'

20. ROTARY OR CABLE TOOLS
ROTARY

21. ELEVATIONS (Show whether DF, RT, GR, etc.)
6803'

DRILLING OPERATIONS AUTHORIZED ARE
SUBJECT TO COMPLIANCE WITH ATTACHED

22. APPROX. DATE WORK WILL START*
10/7/85

23.

"GENERAL REQUIREMENTS"

PROPOSED CASING AND CEMENTING PROGRAM This action is subject to technical and
procedural review pursuant to 43 CFR 3165.3
and appeal pursuant to 43 CFR 3165.4.

SIZE OF HOLE	SIZE OF CASING	WEIGHT PER FOOT	SETTING DEPTH	
12-1/4"	8-5/8"	24#	380'	300 SXS
7-7/8"	4-1/2"	10.5#	7385'	1300 SXS OR SUFFICIENT VOLUME TO COVER OJO ALAMO AT APPROX. 2401'

- A. LOCATION PLAT
- B. DRILLING PROGNOSIS
- C. SURFACE USE PLAN
- C1. PRODUCTION CASING CEMENT
- C2. SURFACE CASING CEMENT
- D. SCHEMATIC DIAGRAM OF RIG
BOP & MANIFOLD
- E. BOP TEST PROCEDURE
- F. RIG LAYOUT
- F1. INVENTORY
- G. EXISTING & PLANNED ACCESS
ROADS
- H. EXISTING WELLS - 1 MILE RADIUS

- I. EXISTING OR PROPOSED FACILITIES - 1 MILE
- RADIUS
- J. DETAILED LOCATION PLAT OF PRODUCTION
FACILITIES
- K. WELL SITE LAYOUT
- L. DRILL PAD LAYOUT WITH ELEVATIONS
- L1. CROSS SECTIONS OF PLANNED CUT & FILL
ACROSS LOCATION
- M. LEASE SEPCIAL STIPULATIONS

IN ABOVE SPACE DESCRIBE PROPOSED PROGRAM: If proposal is to deepen or plug back, give data on present productive zone and proposed new productive zone. If proposal is to drill or deepen directionally, give pertinent data on subsurface locations and measured and true vertical depths. Give blowout preventer program, if any.

24.

SIGNED

TITLE DIVISION PRODUCTION MGR.

DATE SEPTEMBER 17, 1985

(This space for Federal or State office use)

PERMIT NO.

APPROVED BY

CONDITIONS OF APPROVAL, IF ANY:

TITLE

RECEIVED

OCT 10 1985

OIL CON. DIV.
DIST. 3

NMOCC

APPROVED
AS AMENDED

DATE OCT 08 1985
(SGD.) MAT. MILLENBACH

M. MILLENBACH
AREA MANAGER

NEW MEXICO OIL CONSERVATION COMMISSION
WELL LOCATION AND ACREAGE DEDICATION PLAT

Form C-102
Supersedes C-128
Effective 1-1-65

All distances must be from the outer boundaries of the Section.

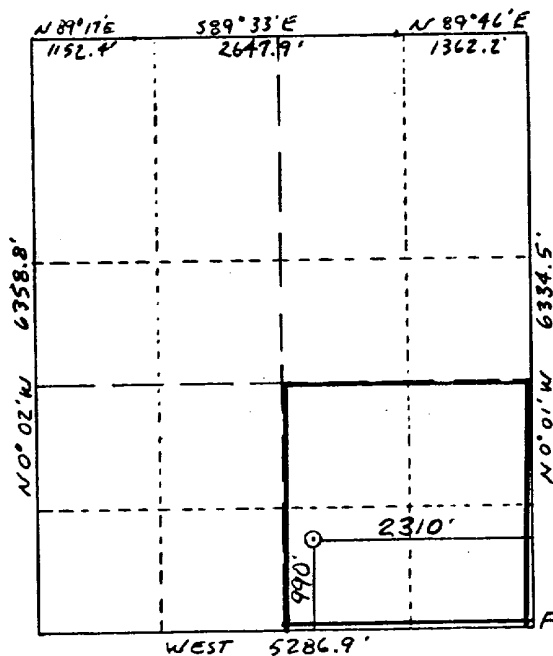
Operator COTTON PETROLEUM CORP.			Lease APACHE		Well No. 154
Unit Letter 0	Section 3	Township 24N	Range 4W	County Rio Arriba	
Actual Footage Location of Well: 990 feet from the South line and 2310 feet from the East line					
Ground Level Elev. 6803	Producing Formation Gallup Dakota		Pool Lindrith Gallup Dakota W.		Dedicated Acreage: 160 Acres

1. Outline the acreage dedicated to the subject well by colored pencil or hachure marks on the plat below.
2. If more than one lease is dedicated to the well, outline each and identify the ownership thereof (both as to working interest and royalty).
3. If more than one lease of different ownership is dedicated to the well, have the interests of all owners been consolidated by communitization, unitization, force-pooling, etc?

☐ Yes ☐ No If answer is "yes," type of consolidation _____

If answer is "no," list the owners and tract descriptions which have actually been consolidated. (Use reverse side of this form if necessary.) _____

No allowable will be assigned to the well until all interests have been consolidated (by communitization, unitization, forced-pooling, or otherwise) or until a non-standard unit, eliminating such interests, has been approved by the Commission.



Sec. 3 T24N R4W

BUREAU OF LAND MANAGEMENT
FARMINGTON RESOURCE AREA

SEP 20 1985

RECEIVED

RECEIVED

OCT 10 1985

OIL CON. DIV.
DIST. 3

Scale: 1"=2000'

CERTIFICATION

I hereby certify that the information contained herein is true and complete to the best of my knowledge and belief.

Name _____

Position
Division Production Mgr.

Company
Cotton Petroleum Corporation

Date
September 17, 1985

I hereby certify that the well location shown on this plat was plotted from field notes of actual surveys made by me or under my supervision, and that the same is true and correct to the best of my knowledge and belief.

Date Surveyed _____
William E. Mahnke II
Registered Professional Engineer
and Licensed Surveyor

Certificate No. _____

8466

