

UNITED STATES  
DEPARTMENT OF THE INTERIOR  
GEOLOGICAL SURVEY

(Mount in position on  
reverse side)

30-034-23887

APPLICATION FOR PERMIT TO DRILL, DEEPEN, OR PLUG BACK

1a. TYPE OF WORK

DRILL ☒

DEEPEN ☐

PLUG BACK ☐

b. TYPE OF WELL

OIL  
WELL ☒

GAS  
WELL ☐

OTHER

SINGLE  
ZONE ☒

MULTIPLE  
ZONE ☐

2. NAME OF OPERATOR

COTTON PETROLEUM CORPORATION

3. ADDRESS OF OPERATOR

3773 CHERRY CREEK DRIVE NORTH #750, DENVER, CO 80209

4. LOCATION OF WELL (Report location clearly and in accordance with any State requirements.)

At surface 2735' FNL 1810' FEL

At proposed prod. zone

14. DISTANCE IN MILES AND DIRECTION FROM NEAREST TOWN OR POST OFFICE\*

BUREAU OF LAND MANAGEMENT

15. DISTANCE FROM PROPOSED\*

LOCATION TO NEAREST  
PROPERTY OR LEASE LINE, FT.  
(Also to nearest drlg. unit line, if any)

16. NO. OF ACRES IN LEASE AREA

2665

18. DISTANCE FROM PROPOSED LOCATION\*  
TO NEAREST WELL, DRILLING, COMPLETED,  
OR APPLIED FOR, ON THIS LEASE, FT.

19. PROPOSED DEPTH

7462'

21. NO. OF ACRES ASSIGNED  
TO THIS WELL

225.4 UNT w/ Apache 123

21. ELEVATIONS (Show whether DF, RT, GR, etc.)

6865'

DRILLING OPERATIONS AUTHORIZED ARE  
SUBJECT TO COMPLIANCE WITH ATTACHED

"GENERAL REQUIREMENTS"

PROPOSED CASING AND CEMENTING PROGRAM

22. APPROX. DATE WORK WILL START\*

10/7/85

This action is subject to technical and  
procedural review pursuant to 43 CFR 3165.3  
and appeal pursuant to 43 CFR 3165.4.

SIZE OF HOLE	SIZE OF CASING	WEIGHT PER FOOT	SETTING DEPTH	QUANTITY OF CEMENT
12-1/4"	8-5/8"	24#	380'	300 SXS
7-7/8"	4-1/2"	10.5#	7462'	1300 SXS OR SUFFICIENT VOLUME TO COVER OJO ALAMO AT APPROX. 2478'

- A. LOCATION PLAT  
B. DRILLING PROGNOSIS  
C. SURFACE USE PLAN  
C1. PRODUCTION CASING CEMENT  
C2. SURFACE CASING CEMENT  
D. SCHEMATIC DIAGRAM OF RIG  
BOP & MANIFOLD  
E. BOP TEST PROCEDURE  
F. RIG LAYOUT  
F1. INVENTORY  
G. EXISTING & PLANNED ACCESS  
ROADS  
H. EXISTING WELLS - 1 MILE RADIUS

- I. EXISTING OR PROPOSED FACILITIES - 1 MILE  
- RADIUS  
J. DETAILED LOCATION PLAT OF PRODUCTION  
FACILITIES  
K. WELL SITE LAYOUT  
L. DRILL PAD LAYOUT WITH ELEVATIONS  
L1. CROSS SECTIONS OF PLANNED CUT & FILL  
ACROSS LOCATION  
M. LEASE SEPCIAL STIPULATIONS

RECEIVED

OCT 10 1985

OIL CON. DIV  
DIST. 3

IN ABOVE SPACE DESCRIBE PROPOSED PROGRAM: If proposal is to deepen or plug back, give data on present production zone and proposed new productive zone. If proposal is to drill or deepen directionally, give pertinent data on subsurface locations and measured and true vertical depths. Give blowout preventer program, if any.

24.

SIGNED

TITLE DIVISION PRODUCTION MGR.

DATE 9/11/85

(This space for Federal or State office use)

PERMIT NO.

APPROVAL DATE

APPROVED BY

TITLE

CONDITIONS OF APPROVAL, IF ANY:

APPROVED  
AS AMENDED

OCT 08 1985  
(SGD.) MAT MILLENBACH  
M. MILLENBACH  
AREA MANAGER

NMOCC

NEW MEXICO OIL CONSERVATION COMMISSION  
WELL LOCATION AND ACREAGE DEDICATION PLAT

Supervisors 6-128  
Effective 1-1-65

All distances must be from the outer boundaries of the Section.

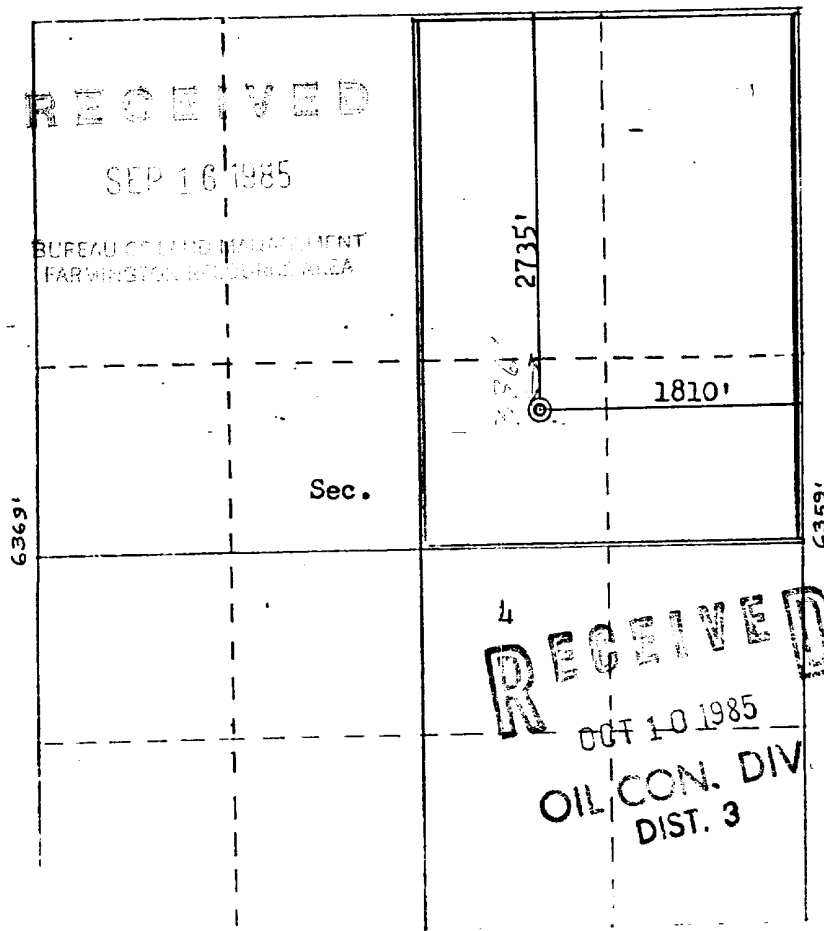
Operator <b>COTTON PETROLEUM CORPORATION</b>		Lease <b>APACHE</b>		Well No. <b>157</b>	
Unit Letter <b>G</b>	Section <b>4</b>	Township <b>24N</b>	Range <b>4W</b>	County <b>Rio Arriba</b>	
Actual Footage Location of Well: <b>2735</b> feet from the <b>North</b> line and <b>1810</b> feet from the <b>East</b> line					
Ground Level Elev. <b>6865</b>	Producing Formation <b>GALLUP DAKOTA</b>		Pool <b>LINDRITH GALLUP DAKOTA WEST</b>		Dedicated Acreage: <b>225.54</b> Acres

1. Outline the acreage dedicated to the subject well by colored pencil or hachure marks on the plat below.
2. If more than one lease is dedicated to the well, outline each and identify the ownership thereof (both as to working interest and royalty).
3. If more than one lease of different ownership is dedicated to the well, have the interests of all owners been consolidated by communitization, unitization, force-pooling, etc?

☐ Yes ☐ No If answer is "yes," type of consolidation \_\_\_\_\_

If answer is "no," list the owners and tract descriptions which have actually been consolidated. (Use reverse side of this form if necessary.) \_\_\_\_\_

No allowable will be assigned to the well until all interests have been consolidated (by communitization, unitization, forced-pooling, or otherwise) or until a non-standard unit, eliminating such interests, has been approved by the Commission.



Scale: 1"=1320'

CERTIFICATION

I hereby certify that the information contained herein is true and complete to the best of my knowledge and belief.

*[Signature]*

Name

Position

Company

Date

I hereby certify that the well location shown on this plat was plotted from field notes of actual surveys made by me or under my supervision, and that the same is true and correct to the best of my knowledge and belief.

Date Surveyed

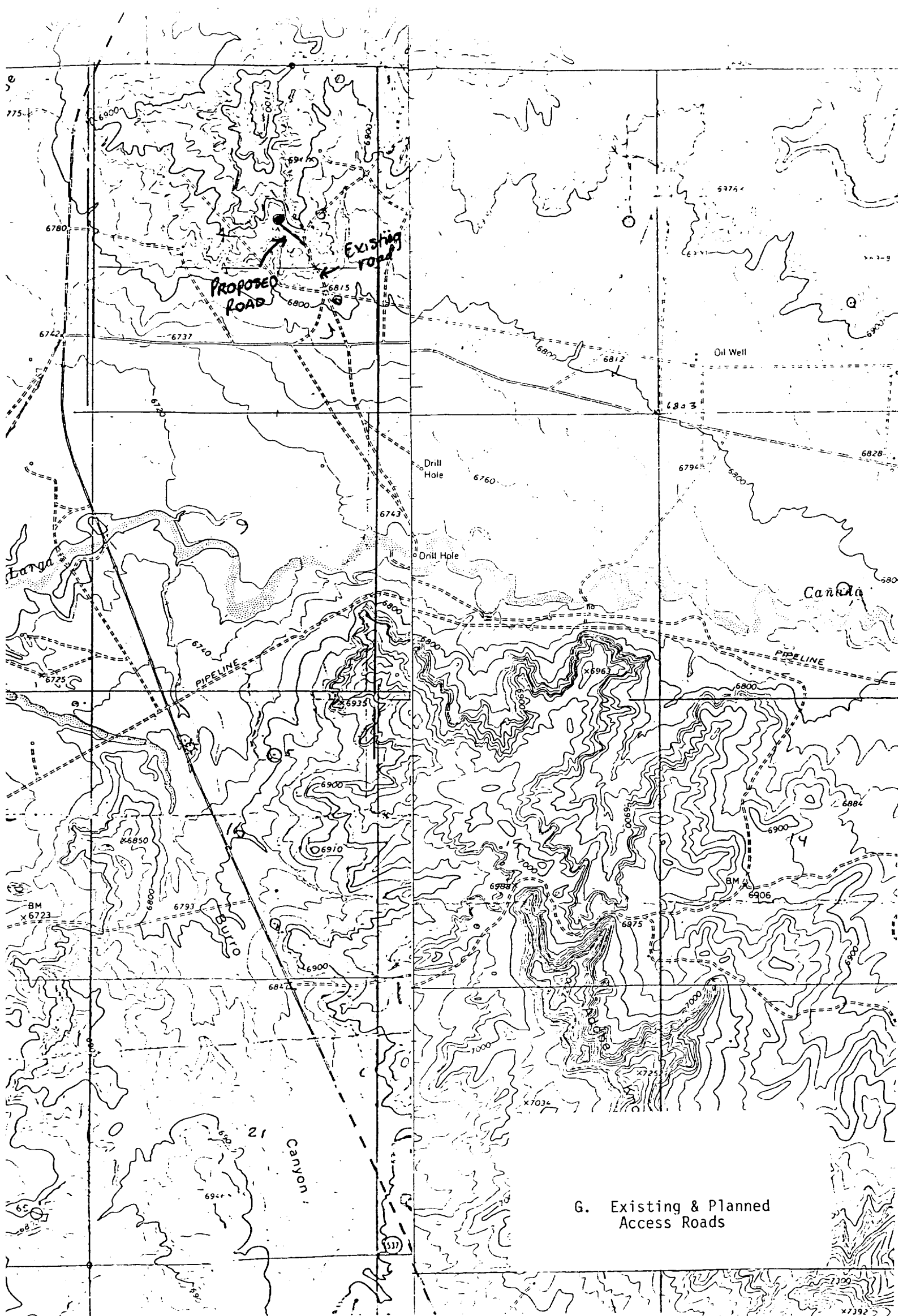
September 12, 1985

Registered Professional Engineer and Land Surveyor

*[Signature]*  
Fred B. Kerr, Jr.

Certificate No.

3950 687, JR.



G. Existing & Planned Access Roads

Vicinity Map for  
COTTON PETROLEUM CORPORATION #157 A<sup>P</sup>ACHE  
2735'FNL 1810'FEL Sec. 4-T2LN-RLW  
RIO ARRIBA COUNTY, NEW MEXICO