

UNITED STATES  
DEPARTMENT OF THE INTERIOR  
BUREAU OF LAND MANAGEMENT

FORM APPROVED  
Budget Bureau No. 1004-0135

SUNDRY NOTICES AND REPORTS ON WELLS

Do not use this form for proposals to drill or to deepen  
or reentry to a different reservoir.

Use "APPLICATION FOR PERMIT" For such proposals

1 FEB 28 PM 12:50

101 ALBUQUERQUE NM

SUBMIT IN TRIPLICATE

1. Type of Well: XX Oil Well Gas Well Other	8. Well Name and No. Apache # 157
2. Name of Operator Apache Corporation	9. API Well No. 30 03923887
3. Address and Telephone No. 2855 Southside River Road Suite A, Farmington, NM 87401 505-325-0318	10. Field and Pool, or Exploratory Ar W. Lindrith / Dak
4. Location of Well (Footage, Sec., T., R., M., or Survey Description) 2735 FNL & 1810 FEL SW NE Sec 4 T24N R4W	11. County or Parish, State Rio Arriba NM

12. CHECK APPROPRIATE BOX (s) TO INDICATE NATURE OF NOTICE, REPORT, OR OTHER DATA

TYPE OF SUBMISSION	TYPE OF ACTION
XX Notice of Intent	XX Abandonment
Subsequent Report	Recompletion
Final Abandonment Notice	Plugging Back
	Casing Repair
	Altering Casing
	Other
	(Note: Report results of multiple completions on Well Completion or Recompletion Report and LogForm.)

13. Describe Proposed or Completed Operations (Clearly state all pertinent details, and give pertinent dates, including estimated date of starting any proposed work well is directionally drilled give subsurface locations and measured and true vertical depths for all markers and zones pertinent to this work.)

Apache Corporation proposes to P&A this well according to the attached procedure.

Attachment.

14. I Certify that the foregoing is true and correct.

Signed [Signature] Title Sr. Production Foreman Date 2-26-2001

(This space for Federal or State office use)

Lands and Mineral Resources

Approved by /s/ Brian W. Davis Title Surface restoration COAs attached. Date MAR 16 2001

Conditions of approval, if any:

Title 18 U.S.C. Section 1001, makes it a crime for any person knowingly to make to any department or agency to the United States any false, fictitious or

Fraudulent statements or representations as to any matter within its jurisdiction.

Proposed P+A Procedures and Schematic

2-19-2001

Apache Corporation  
JAT 127 #157  
Sec 4, T24N, R4W  
Rio Arriba, NM

Spvd 11-28-1985

Csg:

Surface: 8 7/8" 24.0# J-SS @ 382'

with 280 sx Class B. Cmt to surface.

Long String: 4 1/2" 10.5# + 11.6# J-SS,  
set @ 7492'. DV Tool @ 4195'.1<sup>st</sup> stage: 350 sx "Lite" cmt, tail in  
200 sx Class H.2<sup>nd</sup> stage: 600 sx "Lite" cmt.Calculated cmt top @ 942'  
(from Completion Report)

12-27-99 MIRVUSU.  
Attempt to unset  
tbg anchor. Stuck.  
Twisted tbg off  
@ 5230'. Did  
not attempt to fish.

Formation Tops:

Nacimiento	1200'	Point Lookout	5062'
Ojo Alamo	2120'	Gallup	6276'
Fruitland	2420'	Dakota	7100'
Pictured Cliffs	2990'		
Cliff House	4618'		

Proposed P+A

All cmt - Class B 15.6#/gal 1.18 ft<sup>3</sup>/sx  
All spacer fluid - fresh water.

1. MIRVUSU. Set CIBP @ 5200'.

Spot 53 sx (62.5 ft<sup>3</sup>) from  
4502' to 5200'.2. Spot 74 sx (87.3 ft<sup>3</sup>) from  
2065' to 3040'.3. Spot 12 sx (14.2 ft<sup>3</sup>) from  
1091' to 1250'.

4. Press test bradenhead to 500 PSI.

a. If press holds:

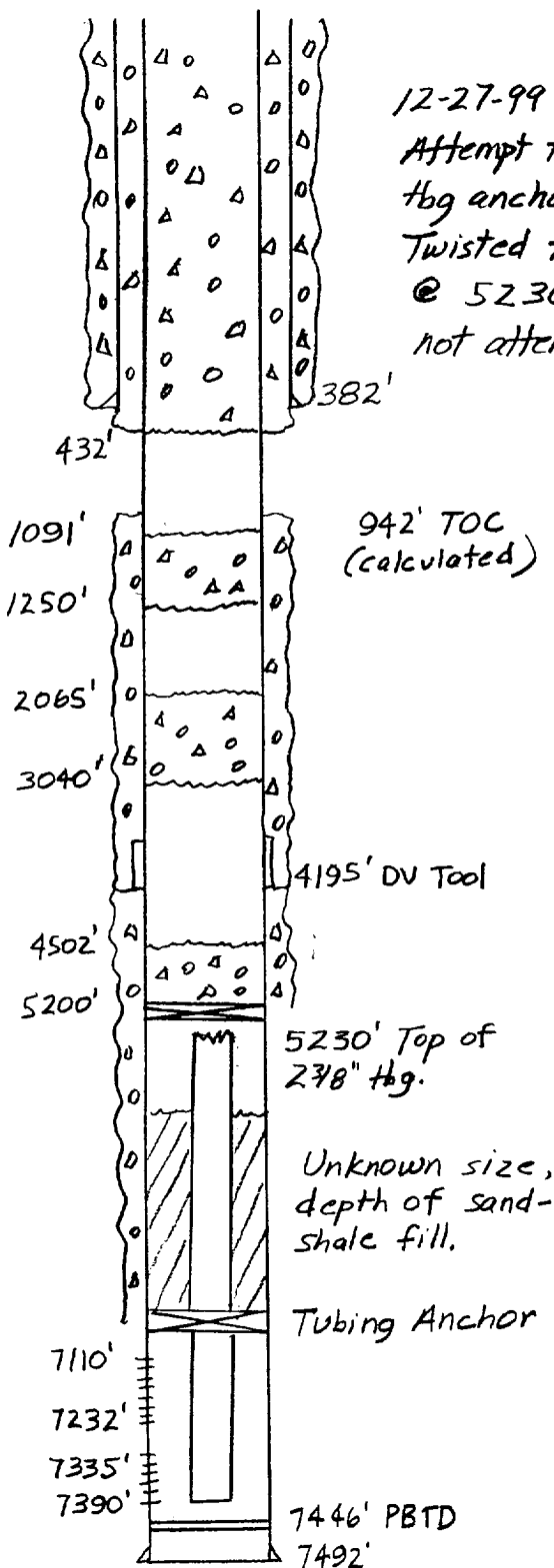
1. Spot 33 sx (38.9 ft<sup>3</sup>) across  
surface csg shoe from 432'  
back to surface.

b. If bradenhead pumps into:

1. Perf csg @ 432'.

2. Circ cmt down 4 1/2" csg, thru  
perfs, back to surface. (Approx 124 sx)

5. Install P+A marker. Remediate location.



Per B. Davis verbal - OK to set CIBP  
@ 5200'.

## BLM CONDITIONS OF APPROVAL

The following surface rehabilitation Conditions of Approval must be complied with as applicable, before this well can be approved for final abandonment (see 43 CFR 3162.3-4). Surface rehabilitation work shall be completed within one year of the actual plugging date. Notification for completion of this work can be submitted with a Sundry Notice. Questions? Call Pat Hester at (505) 761-8786.

1. All fences, production equipment, purchaser's equipment, concrete slabs, deadman (anchors), flowlines, risers, debris and trash must be removed from the location. Non-retrieved flowlines and pipelines will be abandoned in accordance with State Rule 714. Information supporting the non-retrieval will be included in the subsequent report or final abandonment Sundry Notice.

2. Production pits will be closed according to the Unlined Surface Impoundment Closure Guidelines, as approved in the Environmental Assessment of December 1993. Any oil stained soils can be remediated on-site according to these guidelines or disposed of in a an approved facility.

3. The well pad will be shaped to the natural terrain and left as rough as possible. All compacted areas and areas devoid of vegetation shall be ripped to a minimum of 12" in depth before reseeding.

4. Access roads will be shaped to conform to the natural terrain and left as rough as possible to deter vehicle travel. Access will be ripped to a minimum of 12" in depth, water barred and reseeded. All erosion problems created by the development must be corrected prior to acceptance of release. Water bars should be spaced as shown below along the fall line of the slope:

% Slope	Spacing Interval
Less than 20%	200'
2 to 5 %	150'
6 to 9 %	100'
10 to 15 %	50'
Greater than 15%	30'

5. All disturbed areas will be seeded with the prescribed certified seed mix (reseeding may be required). Seed mix must be certified weed free to avoid the introduction of noxious weeds. Refer to the original APD for seed mix.

6. Notify Surface Managing Agency seven (7) days prior to seeding so that they may be present to witness.

7. The period of liability under the bond of record will not be terminated until the well is inspected and the surface rehabilitation approved.

Other Surface Managing Agencies (SMA's) may vary slightly in their restoration requirements. It is your responsibility, as the operator, to obtain surface restoration requirements from other SMA's. We need to be provided with a copy of these requirements. Any problems concerning stipulations received from other SMA's should be brought to us.

On private land, a letter from the fee owner stating that the surface restoration is satisfactory will be provided to the office. Questions? Call Pat Hester at (505) 761-8786.