

STATE OF NEW MEXICO  
ENERGY AND MINES DEPARTMENT

OIL CONSERVATION DIVISION  
P. O. BOX 2088  
SANTA FE, NEW MEXICO 87501

Form C-101  
Revised 10-1-78

1A. Indicate Type of Lease  
STATE ☐ FEDERAL ☒  
2. State Oil & Gas Lease No.

APPLICATION FOR PERMIT TO DRILL, DEEPEN, OR PLUG BACK

1a. Type of Work  
DRILL ☒ DEEPEN ☐ PLUG BACK ☐  
b. Type of Well  
OIL WELL ☒ GAS WELL ☐ OTHER ☐ SINGLE ZONE ☒ MULTIPLE ZONE ☐  
2. Name of Operator  
Amoco Production Co.  
3. Address of Operator  
501 Airport Drive, Farmington, N M 87401  
4. Location of Well  
UNIT LETTER I LOCATED 1980 FEET FROM THE South LINE  
800 FEET FROM THE East LINE OF SEC. 25 TWP. 24N RGE. 1W  
12. County  
Rio Arriba  
13. Proposed Depth  
4796'  
15A. Formation  
Mesaverde  
20. History or C.T.  
Rotary  
21. Elevations (Show whether DF, RT, etc.)  
7202' GR  
21A. Kind & Status Plug. Bond  
Statewide  
21B. Drilling Contractor  
Unknown  
22. Approx. Date Work will start  
As soon as permitted

PROPOSED CASING AND CEMENT PROGRAM

SIZE OF HOLE	SIZE OF CASING	WEIGHT PER FOOT	SETTING DEPTH	SACKS OF CEMENT	EST. TOP
12 1/4"	8 5/8"	32.3# H-40	400'	300 SX	Surface
7 7/8"	5 1/2"	15.5# K-55	4796'	1056 SX	Surface

Amoco proposes to drill the above well to further develop the Wildcat Mesaverde reservoir. The well will be drilled to the surface casing point using native mud. The well will then be drilled to TD with a low solids nondispersed mud system. Completion design will be based on open hole logs. Copy of all logs will be filed upon completion. Amoco's standard blowout prevention will be employed; See attached drawing for blowout preventer design. Upon completion the well site will be cleaned and the reserve pit filled and leveled. The gas from this well is undedicated.

APPROVAL EXPIRES 4-30-86  
UNLESS DRILLING IS COMMENCED.  
SPUD NOTICE MUST BE SUBMITTED  
WITHIN 40 DAYS.

RECEIVED  
OCT 30 1985  
OIL CON. DIV.  
DIST. 3

IN ABOVE SPACE DESCRIBE PROPOSED PROGRAM, INCLUDING BLOWOUT PREVENTER PROGRAM, IF ANY.

I hereby certify that the information above is true and complete to the best of my knowledge and belief.

Signed BDS Shaw Title Adm. Supervisor Date 10-17-85

(This space for State Use)

APPROVED BY ORIGINAL SIGNED BY ERNIE BUSCH TITLE GEOLOGIST DISTRICT #3 DATE OCT 31 1985  
CONDITIONS OF APPROVAL, IF ANY:

NEW MEXICO OIL CONSERVATION COMMISSION  
WELL LOCATION AND ACREAGE DEDICATION PLAT

Form O-111  
Superseded O-110  
Effective 1-1-85

All distances must be from the outer boundaries of the Section.

Operator <b>AMOCO PRODUCTION COMPANY</b>			Lease <b>H. L. BUTTS GAS COM "A"</b>		Well No. <b>1</b>
Unit Letter <b>I</b>	Section <b>25</b>	Township <b>24N</b>	Range <b>1W</b>	County <b>Rio Arriba</b>	
Actual Footage Location of Well: <b>1980</b> feet from the <b>South</b> line and <b>800</b> feet from the <b>East</b> line					
Ground Level Elev. <b>7202</b>	Producing Formation <b>Mesa Verde</b>		Pool <b>Wildcat</b>	Dedicated Acreage: <b>40</b> Acres	

1. Outline the acreage dedicated to the subject well by colored pencil or hachure marks on the plat below.
2. If more than one lease is dedicated to the well, outline each and identify the ownership thereof (both as to working interest and royalty).
3. If more than one lease of different ownership is dedicated to the well, have the interests of all owners been consolidated by communitization, unitization, force-pooling, etc?

☐ Yes ☐ No If answer is "yes," type of consolidation \_\_\_\_\_

If answer is "no," list the owners and tract descriptions which have actually been consolidated. (Use reverse side of this form if necessary.) \_\_\_\_\_

No allowable will be assigned to the well until all interests have been consolidated (by communitization, unitization, forced-pooling, or otherwise) or until a non-standard unit, eliminating such interests, has been approved by the Commission.

		Sec.
		25
<p><b>RECEIVED</b> OCT 30 1985 OIL CON. DIV. DIST. 3</p>		<p>800'</p> <p>1980'</p>

Scale: 1"=1000'

CERTIFICATION

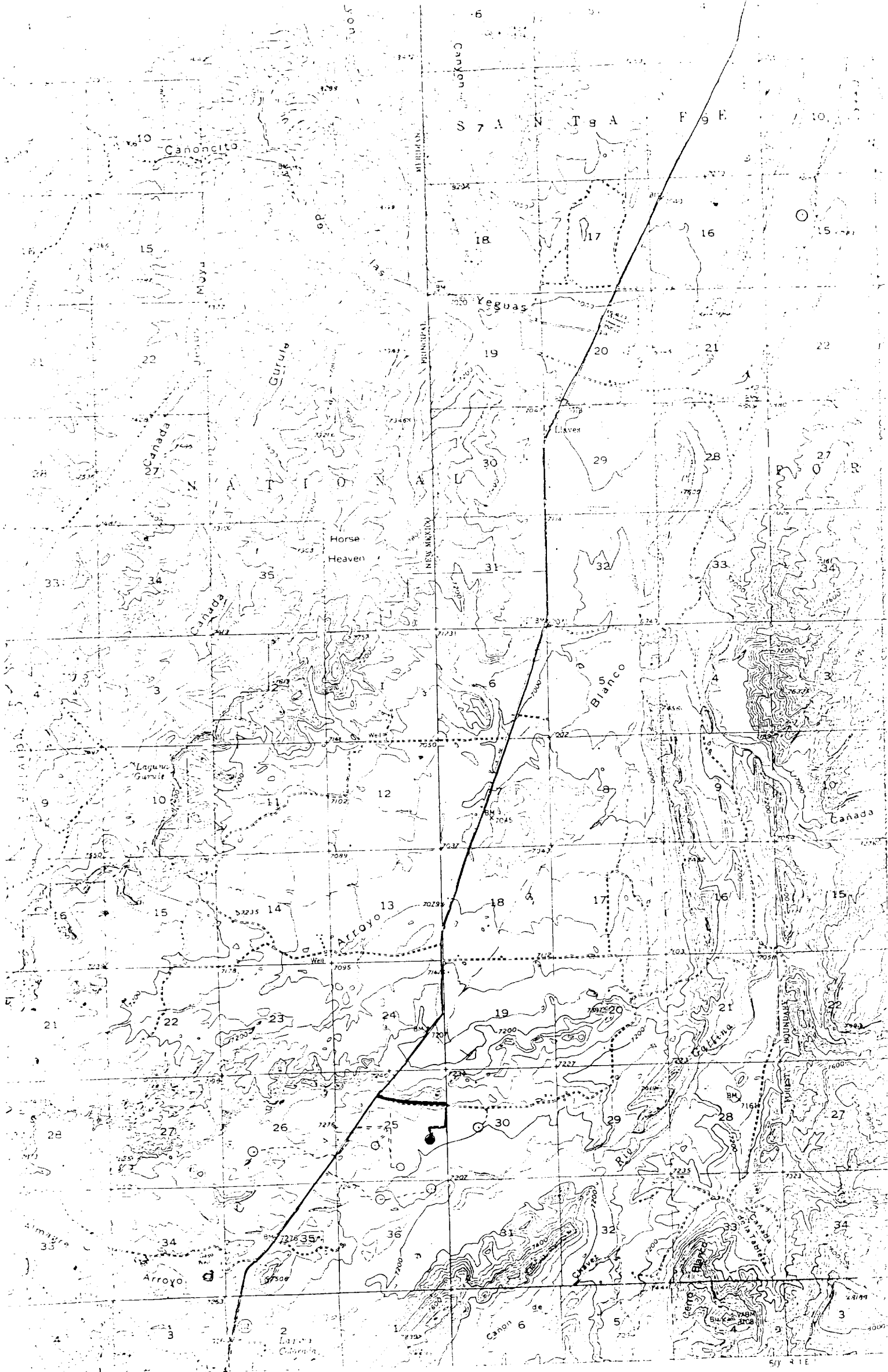
I hereby certify that the information contained herein is true and complete to the best of my knowledge and belief.

**BDS Shaw**  
Name  
**Adm. Supervisor**  
Position  
**Amoco Production**  
Company  
**Company**  
Date  
**10/17/85**

I hereby certify that the well location shown on this plat was plotted from field notes of actual surveys made by me or under my supervision, and that the same is true and correct to the best of my knowledge and belief.

Date Surveyed  
**September 12, 1985**  
Registered Professional Engineer  
and Land Surveyor  
**Fred B. Kert Jr.**

Certificate No.  
**3350**



Vicinity Map for  
AMOCO PRODUCTION CO. #1 H. L. BUTTS GAS COM "A"  
1980' FSL 800' FEL Sec. 25-T24N-RLW  
RIO ARRIBA COUNTY, NEW MEXICO