

UNITED STATES
DEPARTMENT OF THE INTERIOR
GEOLOGICAL SURVEY

(Print name and title of person
receiving order)

30-039-23912

APPLICATION FOR PERMIT TO DRILL, DEEPEN, OR PLUG BACK

1a. TYPE OF WORK
DRILL ☒ DEEPEN ☐ PLUG BACK ☐
b. TYPE OF WELL
OIL WELL ☒ GAS WELL ☐ OTHER ☐
SINGLE ZONE ☐ MULTIPLE ZONE ☐

2. NAME OF OPERATOR
COTTON PETROLEUM CORPORATION

3. ADDRESS OF OPERATOR
3773 CHERRY CREEK DRIVE NORTH #750, DENVER, CO 80209

4. LOCATION OF WELL (Report location clearly and in accordance with any State regulations)
At surface 3295' FNL
2970' GSI 2310' FWL
At proposed prod. zone

14. DISTANCE IN MILES AND DIRECTION FROM NEAREST TOWN OR POST OFFICE*

BUREAU OF LAND MANAGEMENT
FARMINGTON RESOURCE AREA

15. DISTANCE FROM PROPOSED*
LOCATION TO NEAREST
PROPERTY OR LEASE LINE, FT.
(Also to nearest drlg. unit line, if any)

16. NO. OF ACRES IN LEASE
2665

17. NO. OF ACRES ASSIGNED
TO THIS WELL
225.3 Jnt w/Apache 103

18. DISTANCE FROM PROPOSED LOCATION*
TO NEAREST WELL, DRILLING, COMPLETED,
OR APPLIED FOR, ON THIS LEASE, FT.

19. PROPOSED DEPTH
7472'

20. ROTARY OR CABLE TOOLS
ROTARY

21. ELEVATIONS (Show whether DF, RT, GR, etc.)
6865'

DRILLING OPERATIONS AUTHORIZED ARE
SUBJECT TO COMPLIANCE WITH ATTACHED
"GENERAL REQUIREMENTS".

22. APPROX. DATE WORK WILL START*
10/7/85
This action is subject to technical and
procedural review pursuant to 43 CFR 3165.3
and appeal pursuant to 43 CFR 3165.4.

SIZE OF HOLE	SIZE OF CASING	WEIGHT PER FOOT	SETTING DEPTH	QUANTITY OF CEMENT
12-1/4"	8-5/8"	24#	380'	300 SXS
7-7/8"	4-1/2"	10.5#	7472'	1300 SXS OR SUFFICIENT VOLUME TO COVER OJO ALAMO AT APPROX. 2418'

- A. LOCATION PLAT
B. DRILLING PROGNOSIS
C. SURFACE USE PLAN
C1. PRODUCTION CASING CEMENT
C2. SURFACE CASING CEMENT
D. SCHEMATIC DIAGRAM OF RIG
BOP & MANIFOLD
E. BOP TEST PROCEDURE
F. RIG LAYOUT
F1. INVENTORY
G. EXISTING & PLANNED ACCESS
ROADS
H. EXISTING WELLS - 1 MILE RADIUS

- I. EXISTING OR PROPOSED FACILITIES - 1 MILE
- RADIUS
J. DETAILED LOCATION PLAT OF PRODUCTION
FACILITIES
K. WELL SITE LAYOUT
L. DRILL PAD LAYOUT WITH ELEVATIONS
L1. CROSS SECTIONS OF PLANNED CUT & FILL
ACROSS LOCATION
M. LEASE SEPCIAL STIPULATIONS

RECEIVED
OCT 10 1985

IN ABOVE SPACE DESCRIBE PROPOSED PROGRAM: If proposal is to deepen or plug back, give data on present productive zone and proposed new productive zone. If proposal is to drill or deepen directionally, give pertinent data on subsurface locations and measured and true vertical depths. Give blowout preventer program, if any.

24. SIGNED [Signature] TITLE DIVISION PRODUCTION MGR. DATE SEPTEMBER 17, 1985

(This space for Federal or State office use)

PERMIT NO. _____ APPROVAL DATE _____

APPROVED BY _____ TITLE _____
CONDITIONS OF APPROVAL, IF ANY:

APPROVED
AS AMENDED

OCT 07 1985
M. MILLENBACH

M. MILLENBACH
AREA MANAGER

NNCCC

NEW MEXICO OIL CONSERVATION COMMISSION
WELL LOCATION AND ACREAGE DEDICATION PLAT

Form C-102
Supersedes C-128
Effective 1-1-55

All distances must be from the outer boundaries of the Section.

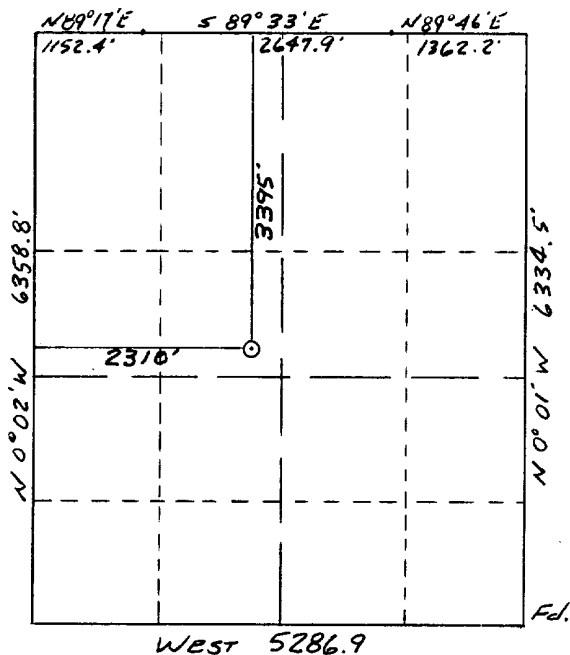
Operator COTTON PETROLEUM CORP.			Lease APACHE		Well No. 150
Unit Letter F	Section 3	Township 24N	Range 4W	County Rio Arriba	
Actual Footage Location of Well: 3395 feet from the North line and 2310 feet from the West line					
Ground Level Elev. 6865	Producing Formation Gallup Dakota	Pool Lindrith Gallup Dakota W.		Dedicated Acreage: 225.3 Acres	

1. Outline the acreage dedicated to the subject well by colored pencil or hachure marks on the plat below.
2. If more than one lease is dedicated to the well, outline each and identify the ownership thereof (both as to working interest and royalty).
3. If more than one lease of different ownership is dedicated to the well, have the interests of all owners been consolidated by communitization, unitization, force-pooling, etc?

☐ Yes ☐ No If answer is "yes," type of consolidation _____

If answer is "no," list the owners and tract descriptions which have actually been consolidated. (Use reverse side of this form if necessary.) _____

No allowable will be assigned to the well until all interests have been consolidated (by communitization, unitization, forced-pooling, or otherwise) or until a non-standard unit, eliminating such interests, has been approved by the Commission.



Scale: 1"=2000'

SEC. 3, T24N, R4W

CERTIFICATION

I hereby certify that the information contained herein is true and complete to the best of my knowledge and belief.

Name _____

Position _____

Company _____

Date _____

I hereby certify that the well location shown on this plat was plotted from field notes of actual surveys made by me or under my supervision, and that the same is true and correct to the best of my knowledge and belief.

Rev. 10-23-85

Date Surveyed _____

William A. Mahoney

Registered Professional Engineer and Land Surveyor #8466

Certification of Professional Land Surveyor

NEW MEXICO OIL CONSERVATION COMMISSION
WELL LOCATION AND ACREAGE DEDICATION PLAT

Form C-102
Supersedes C-128
Effective 1-1-65

All distances must be from the outer boundaries of the Section.

Operator COTTON PETROLEUM CORP.			Lease APACHE		Well No. 150
Unit Letter F	Section 3	Township 24N	Range 4W	County Rio Arriba	
Actual Footage Location of Well: 2970 feet from the South line and 2310 feet from the West line					
Ground Level Elev: 6865	Producing Formation Gallup Dakota		Pool Lindrith Gallup Dakota W.	Dedicated Acreage: 225.3 Acres	

1. Outline the acreage dedicated to the subject well by colored pencil or hatchure marks on the plat below.
2. If more than one lease is dedicated to the well, outline each and identify the ownership thereof (both as to working interest and royalty).
3. If more than one lease of different ownership is dedicated to the well, have the interests of all owners been consolidated by communitization, unitization, force-pooling, etc?

☐ Yes ☐ No If answer is "yes," type of consolidation _____

If answer is "no," list the owners and tract descriptions which have actually been consolidated. (Use reverse side of this form if necessary.) _____

No allowable will be assigned to the well until all interests have been consolidated (by communitization, unitization, forced-pooling, or otherwise) or until a non-standard unit, eliminating such interests, has been approved by the Commission.

RECEIVED

SEP 23 1985

CERTIFICATION

I hereby certify that the information contained herein is true and complete to the best of my knowledge and belief.

Name

Position

Division Production Manager

Company

Cotton Petroleum Corporation

Date

September 17, 1985

RECEIVED

OCT 10 1985

OIL CON. DIV.
DIST. 2

I hereby certify that the well location shown on this plat was plotted from field notes of actual surveys made by me or under my supervision, and that the same is true and correct to the best of my knowledge and belief.

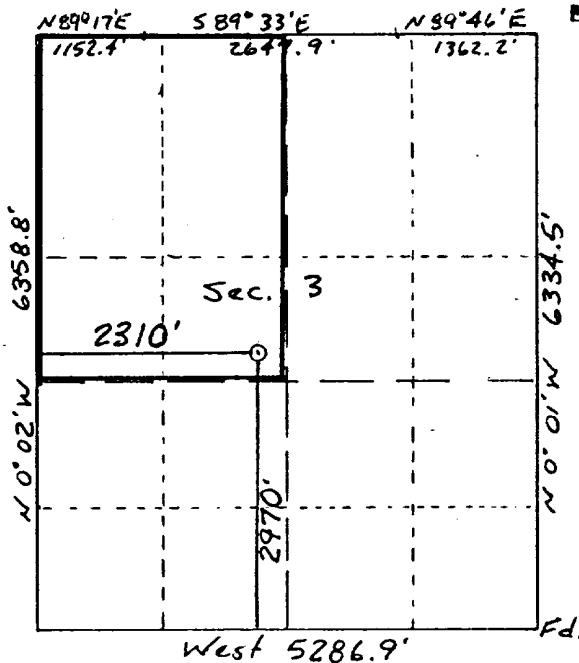
Date Surveyed

William E. Mahnkke II

Registered Professional Engineer and Registered Professional Land Surveyor

Certificate No.

8466



Sec. 3 T24N R4W

Scale: 1"=2000'

