

UNITED STATES  
DEPARTMENT OF THE INTERIOR  
GEOLOGICAL SURVEY

## APPLICATION FOR PERMIT TO DRILL, DEEPEN, OR PLUG BACK

## 1a. TYPE OF WORK

DRILL ☒DEEPEN ☐PLUG BACK ☐

## b. TYPE OF WELL

OIL

WELL ☒GAS ☒

OTHER

SINGLE

ZONE ☒

MULTIPLE

ZONE ☐

## 2. NAME OF OPERATOR

DUGAN PRODUCTION CORP.

## 3. ADDRESS OF OPERATOR

P O Box 208, Farmington, NM 87499

## 4. LOCATION OF WELL (Report location clearly and in accordance with any State requirements.)

At surface 770'

1070' FSL - 790' FWL

At proposed prod. zone

## 14. DISTANCE IN MILES AND DIRECTION FROM NEAREST TOWN OR POST OFFICE

3 miles southwest from Ojito, NM

## 15. DISTANCE FROM PROPOSED\*

LOCATION TO NEAREST  
PROPERTY OR LEASE LINE, FT.  
(Also to nearest drlg. unit line, if any)

790'

18. DISTANCE FROM PROPOSED LOCATION\*  
TO NEAREST WELL, DRILLING, COMPLETED,  
OR APPLIED FOR, ON THIS LEASE, FT.approx. 900'  
south from  
Hurt #2

## 16. NO. OF ACRES IN LEASE

1040

## 19. PROPOSED DEPTH

8270'

17. NO. OF ACRES ASSIGNED  
TO THIS WELL

160

## 20. ROTARY OR CABLE TOOLS

Rotary

## 21. ELEVATIONS (Show whether DF, RT, GR, etc.)

7320' GL; 7332' RKB

## 23.

## PROPOSED CASING

SIZE OF HOLE	SIZE OF CASING	WEIGHT PER FOOT	SETTING DEPTH	QUANTITY OF CEMENT
12-1/4"	9-5/8"	36#	200'	150 cf circ. to surface
7-7/8"	4-1/2"	10.5#	8270'	2050 cf circ. to surface

Plan to drill a 12-1/4" hole and set 200' of 9-5/8" OD, 36#, J-55 surface casing; then plan to drill a 7-7/8" hole to total depth with gel-water-mud program to test Dakota formation. Plan to run IES and CDL logs. If deemed productive, will run 4-1/2", 10.5#, J-55 casing, selectively perforate, frac, clean out after frac and complete well.

IN ABOVE SPACE DESCRIBE PROPOSED PROGRAM: If proposal is to deepen or plug back, give data on present productive zone and proposed new productive zone. If proposal is to drill or deepen directionally, give pertinent data on subsurface locations and measured and true vertical depths. Give blowout preventer program, if any.

## 24.

SIGNED

*Sherman E. Dugan*  
Sherman E. Dugan

TITLE

Geologist

DATE

9-9-85

(This space for Federal or State office use)

PERMIT NO.

APPROVAL DATE

APPROVED BY

TITLE

CONDITIONS OF APPROVAL, IF ANY:

APPROVED  
AS AMENDED

DATE

OCT 29 1985

*Robert M. Millenbach*  
M. MILLENBACH  
AREA MANAGER

\*See Instructions On Reverse Side

NMOC

## OIL CONSERVATION DIVISION

STATE OF NEW MEXICO  
ENERGY AND MINERALS DEPARTMENTP. O. BOX 2088  
SANTA FE, NEW MEXICO 87501Form C-102  
Revised 10-1-78

All distances must be from the outer boundaries of the Section.

Operator Dugan Production Corporation		Lease Hurt		Well No. 5
Unit Letter M	Section 14	Township 25 North	Range 3 West	County Rio Arriba
Actual Footage Location of Well: 990 feet from the South line and 730 feet from the West line				
Ground Level Elev. 7320	Producing Formation Gallup/Dakota	Pool West Lindriith Gallup/Dakota	Dedicated Acreage: 160 Acres	

1. Outline the acreage dedicated to the subject well by colored pencil or hatchure marks on the plat below.
2. If more than one lease is dedicated to the well, outline each and identify the ownership thereof (both as to working interest and royalty).
3. If more than one lease of different ownership is dedicated to the well, have the interests of all owners been consolidated by communitization, unitization, force-pooling, etc?

☐ Yes ☐ No If answer is "yes," type of consolidation \_\_\_\_\_

If answer is "no," list the owners and tract descriptions which have actually been consolidated. (Use reverse side of this form if necessary.) \_\_\_\_\_

No allowable will be assigned to the well until all interests have been consolidated (by communitization, unitization, forced-pooling, or otherwise) or until a non-standard unit, eliminating such interests, has been approved by the Division.

RECEIVED

OCT 04 1985

BUREAU OF LAND MANAGEMENT  
FARMINGTON RESOURCE AREA

SEC. 14

OCT 11 1985

OIL CON. DIV.

1985

## CERTIFICATION

I hereby certify that the information contained herein is true and complete to the best of my knowledge and belief.

Name

Sherman E. Dugan

Position

Geologist

Company

Dugan Production Corp.

Date

10-3-85

EDGAR L. RISENHOOVER  
NEW MEXICO  
5979  
I certify that the well location shown on this plat was plotted from field notes I made by me or under my supervision, and that the same is true and correct to the best of my knowledge and belief.

Date Surveyed

October 1, 1985

Registered Professional Engineer  
and/or Land Surveyor

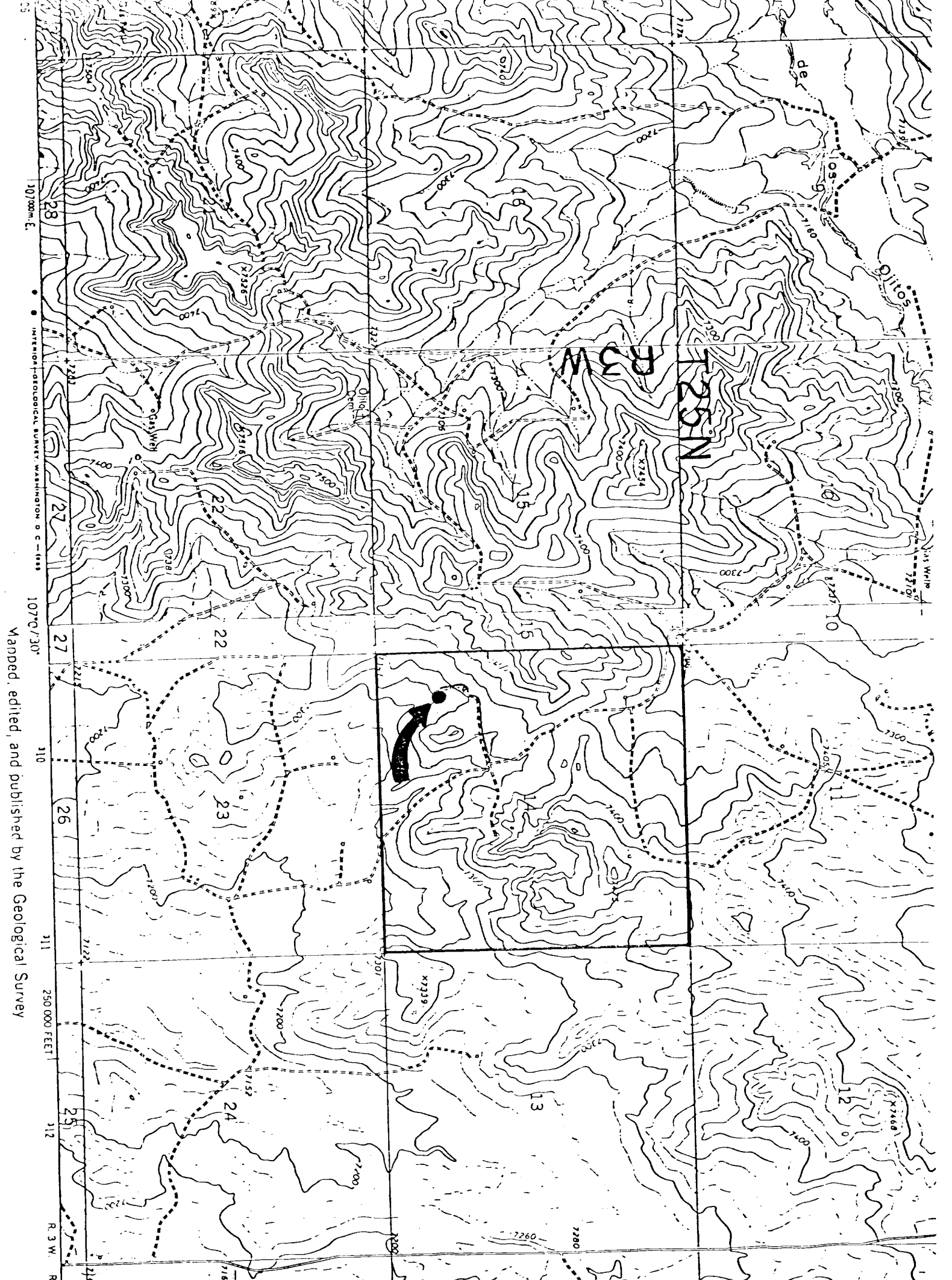
Edgar L. Risenhoover

Certificate No. 5979

Edgar L. Risenhoover, L.S.

Dugan Prod. Corp.  
SF 080539A

990



DUGAN PRODUCTION CORP. - Hurt #5    Existing Roads    Exhibit E

Distance from nearest town or reference pt.  
3 miles southwest of Ojito, NM

Type of surface    dirt  
Conditions    good  
Other

DUGAN PRODUCTION CORP. - Hurt #5    Planned Access Road(s)    Exhibit F

Width    20'    Maximum grades    2%  
Drainage design    where required  
Cuts & Fills  
Surfacing material  
    Turnouts  
    Culverts  
    Gates  
    Cattleguards  
    Fence cuts