

UNITED STATES  
DEPARTMENT OF THE INTERIOR  
BUREAU OF LAND MANAGEMENT

30-039-23749

5. LEASE DESIGNATION AND SERIAL NO. SF-0555076
6. IF INDIAN, ALLOTTEE OR TRIBE NAME
7. UNIT AGREEMENT NAME
8. FARM OR LEASE NAME Howard Federal 15
9. WELL NO. 43-15
10. FIELD AND POOL OR WILDCAT Gavilan-Mancos/Gavilan ext Greenhorn-Graneros-Dakota ext
11. SEC., T., R., M. OR BLK. AND SURVEY OR AREA I Sec. 15-T25N-R2W N.M.P.M.
12. COUNTY OR PARISH Rio Arriba
13. STATE N.M.

APPLICATION FOR PERMIT TO DRILL, DEEPEN, OR PLUG BACK

1a. TYPE OF WORK  
DRILL ☒ DEEPEN ☐ PLUG BACK ☐

b. TYPE OF WELL  
OIL WELL ☒ GAS WELL ☐ OTHER ☐  
SINGLE ZONE ☐ MULTIPLE ZONE ☒

2. NAME OF OPERATOR  
READING & BATES PETROLEUM COMPANY

3. ADDRESS OF OPERATOR Attn: R.B. Shindhelm 2300 Denver National Bank Building; 1125 17th St. Denver, Co. 80202

4. LOCATION OF WELL (Report location clearly and in accordance with any State requirements.)  
At surface 1650' FSL, 790' FEL

At proposed prod. zone Same

14. DISTANCE IN MILES AND DIRECTION FROM NEAREST TOWN OR POST OFFICE\*  
1/2 mile East Gavilan, New Mexico

15. DISTANCE FROM PROPOSED\* LOCATION TO NEAREST PROPERTY OR LEASE LINE, FT. (Also to nearest drig. unit line, if any)  
790'

18. DISTANCE FROM PROPOSED LOCATION\* TO NEAREST WELL, DRILLING, COMPLETED, OR APPLIED FOR, ON THIS LEASE, FT.  
None

21. ELEVATIONS (Show whether DF, RT, GR, etc.)  
7749' GL 7757' DRILLING OPERATIONS AUTHORIZED ARE

23. SUBJECT TO COMPLIANCE WITH ATTACHED PROPOSED CASING AND CEMENTING PROGRAM "GENERAL REQUIREMENTS"

SIZE OF HOLE	SIZE OF CASING	WEIGHT PER FOOT	SETTING DEPTH	NO. OF ACRES ASSIGNED THIS WELL
12-1/4"	9-5/8"	36.00	350'	E 320/320
8-3/4"	7"	23.00&26.00	8100'	

20. ROTARY OR CABLE TOOLS  
Rotary

22. APPROX. DATE WORK WILL START\*  
11/30/85

All producing intervals in Mancos and Greenhorn-Graneros-Dakota formation will be perforated and stimulated as necessary. Dual Completion.

EXHIBITS:

- |                                      |                               |
|--------------------------------------|-------------------------------|
| "A" Location and Elevation Plat      | "E" Access Road to Location   |
| "B" Ten Point Compliance Program     | "F" Radius Map of Field       |
| "C" Blowout Preventer Diagram        | "G" Drill Rig Layout          |
| "D" Multi-Point Requirements for APD | "H" Fracturing Program Layout |
|                                      | "I" Location Profile          |

The gas from this well is not committed.

The E/2, Section 15 is dedicated to this well.

IN ABOVE SPACE DESCRIBE PROPOSED PROGRAM: If proposal is to deepen or plug back, give data on present productive zone and proposed new productive zone. If proposal is to drill or deepen directionally, give pertinent data on subsurface locations and measured and true vertical depths. Give blowout preventer program, if any.

24. FOR: READING & BATES PETROLEUM COMPANY  
SIGNED: EWELL N. WALSH TITLE: Walsh Engr. & Prod. Corp. DATE: 11/6/85  
(This space for Federal or State office use)

PERMIT NO. \_\_\_\_\_ APPROVAL DATE \_\_\_\_\_

APPROVED BY \_\_\_\_\_ TITLE \_\_\_\_\_

CONDITIONS OF APPROVAL, IF ANY:

Held C-104 for Consolidation

\*See Instructions On Reverse Side

NOV 27 1985

OIL CON. DIV. DIST. 3

(SGD.) MAT MILLENBACH

M. MILLENBACH AREA MANAGER

DEC 03 1985

RECEIVED

AS AMENDED

RECEIVED

NOV 07 1985

BUREAU OF LAND MANAGEMENT

APPROVED

AS AMENDED

RECEIVED

NOV 27 1985

OIL CON. DIV. DIST. 3

(SGD.) MAT MILLENBACH

M. MILLENBACH AREA MANAGER

DEC 03 1985

RECEIVED

AS AMENDED

RECEIVED

NOV 07 1985

BUREAU OF LAND MANAGEMENT

APPROVED

AS AMENDED

RECEIVED

NOV 27 1985

OIL CON. DIV. DIST. 3

(SGD.) MAT MILLENBACH

M. MILLENBACH AREA MANAGER

DEC 03 1985

RECEIVED

AS AMENDED

RECEIVED

NOV 07 1985

BUREAU OF LAND MANAGEMENT

APPROVED

AS AMENDED

RECEIVED

NOV 27 1985

OIL CON. DIV. DIST. 3

(SGD.) MAT MILLENBACH

M. MILLENBACH AREA MANAGER

DEC 03 1985

RECEIVED

AS AMENDED

RECEIVED

NOV 07 1985

BUREAU OF LAND MANAGEMENT

APPROVED

AS AMENDED

RECEIVED

NOV 27 1985

OIL CON. DIV. DIST. 3

(SGD.) MAT MILLENBACH

M. MILLENBACH AREA MANAGER

DEC 03 1985

RECEIVED

AS AMENDED

RECEIVED

NOV 07 1985

BUREAU OF LAND MANAGEMENT

APPROVED

AS AMENDED

RECEIVED

NOV 27 1985

OIL CON. DIV. DIST. 3

(SGD.) MAT MILLENBACH

M. MILLENBACH AREA MANAGER

DEC 03 1985

RECEIVED

AS AMENDED

RECEIVED

NOV 07 1985

BUREAU OF LAND MANAGEMENT

APPROVED

AS AMENDED

RECEIVED

NOV 27 1985

OIL CON. DIV. DIST. 3

(SGD.) MAT MILLENBACH

M. MILLENBACH AREA MANAGER

DEC 03 1985

RECEIVED

AS AMENDED

RECEIVED

NOV 07 1985

BUREAU OF LAND MANAGEMENT

APPROVED

AS AMENDED

RECEIVED

NOV 27 1985

OIL CON. DIV. DIST. 3

(SGD.) MAT MILLENBACH

M. MILLENBACH AREA MANAGER

DEC 03 1985

RECEIVED

AS AMENDED

RECEIVED

NOV 07 1985

BUREAU OF LAND MANAGEMENT

APPROVED

AS AMENDED

RECEIVED

NOV 27 1985

OIL CON. DIV. DIST. 3

(SGD.) MAT MILLENBACH

M. MILLENBACH AREA MANAGER

DEC 03 1985

RECEIVED

AS AMENDED

RECEIVED

NOV 07 1985

BUREAU OF LAND MANAGEMENT

APPROVED

AS AMENDED

RECEIVED

NOV 27 1985

OIL CON. DIV. DIST. 3

(SGD.) MAT MILLENBACH

M. MILLENBACH AREA MANAGER

DEC 03 1985

RECEIVED

AS AMENDED

RECEIVED

NOV 07 1985

BUREAU OF LAND MANAGEMENT

APPROVED

AS AMENDED

RECEIVED

NOV 27 1985

OIL CON. DIV. DIST. 3

(SGD.) MAT MILLENBACH

M. MILLENBACH AREA MANAGER

DEC 03 1985

RECEIVED

AS AMENDED

RECEIVED

NOV 07 1985

BUREAU OF LAND MANAGEMENT

APPROVED

AS AMENDED

RECEIVED

NOV 27 1985

OIL CON. DIV. DIST. 3

(SGD.) MAT MILLENBACH

M. MILLENBACH AREA MANAGER

DEC 03 1985

RECEIVED

AS AMENDED

RECEIVED

NOV 07 1985

BUREAU OF LAND MANAGEMENT

APPROVED

AS AMENDED

RECEIVED

NOV 27 1985

OIL CON. DIV. DIST. 3

(SGD.) MAT MILLENBACH

M. MILLENBACH AREA MANAGER

DEC 03 1985

RECEIVED

AS AMENDED

RECEIVED

NOV 07 1985

BUREAU OF LAND MANAGEMENT

APPROVED

AS AMENDED

RECEIVED

NOV 27 1985

OIL CON. DIV. DIST. 3

(SGD.) MAT MILLENBACH

M. MILLENBACH AREA MANAGER

DEC 03 1985

RECEIVED

AS AMENDED

RECEIVED

NOV 07 1985

BUREAU OF LAND MANAGEMENT

APPROVED

AS AMENDED

RECEIVED

NOV 27 1985

OIL CON. DIV. DIST. 3

(SGD.) MAT MILLENBACH

M. MILLENBACH AREA MANAGER

DEC 03 1985

RECEIVED

AS AMENDED

RECEIVED

NOV 07 1985

BUREAU OF LAND MANAGEMENT

APPROVED

AS AMENDED

RECEIVED

NOV 27 1985

OIL CON. DIV. DIST. 3

(SGD.) MAT MILLENBACH

M. MILLENBACH AREA MANAGER

DEC 03 1985

RECEIVED

AS AMENDED

RECEIVED

NOV 07 1985

BUREAU OF LAND MANAGEMENT

APPROVED

AS AMENDED

RECEIVED

NOV 27 1985

OIL CON. DIV. DIST. 3

(SGD.) MAT MILLENBACH

M. MILLENBACH AREA MANAGER

DEC 03 1985

RECEIVED

AS AMENDED

RECEIVED

NOV 07 1985

BUREAU OF LAND MANAGEMENT

APPROVED

AS AMENDED

RECEIVED

NOV 27 1985

OIL CON. DIV. DIST. 3

(SGD.) MAT MILLENBACH

M. MILLENBACH AREA MANAGER

DEC 03 1985

RECEIVED

AS AMENDED

RECEIVED

NOV 07 1985

BUREAU OF LAND MANAGEMENT

APPROVED

AS AMENDED

RECEIVED

NOV 27 1985

OIL CON. DIV. DIST. 3

(SGD.) MAT MILLENBACH

M. MILLENBACH AREA MANAGER

DEC 03 1985

RECEIVED

AS AMENDED

RECEIVED

NOV 07 1985

BUREAU OF LAND MANAGEMENT

APPROVED

AS AMENDED

RECEIVED

NOV 27 1985

OIL CON. DIV. DIST. 3

(SGD.) MAT MILLENBACH

M. MILLENBACH AREA MANAGER

DEC 03 1985

RECEIVED

AS AMENDED

RECEIVED

NOV 07 1985

BUREAU OF LAND MANAGEMENT

APPROVED

AS AMENDED

RECEIVED

NOV 27 1985

OIL CON. DIV. DIST. 3

(SGD.) MAT MILLENBACH

M. MILLENBACH AREA MANAGER

DEC 03 1985

RECEIVED

NEW MEXICO OIL CONSERVATION COMMISSION  
WELL LOCATION AND ACREAGE DEDICATION PLAT

Form C-102  
Supersedes C-128  
Effective 1-1-65

All distances must be from the outer boundaries of the Section.

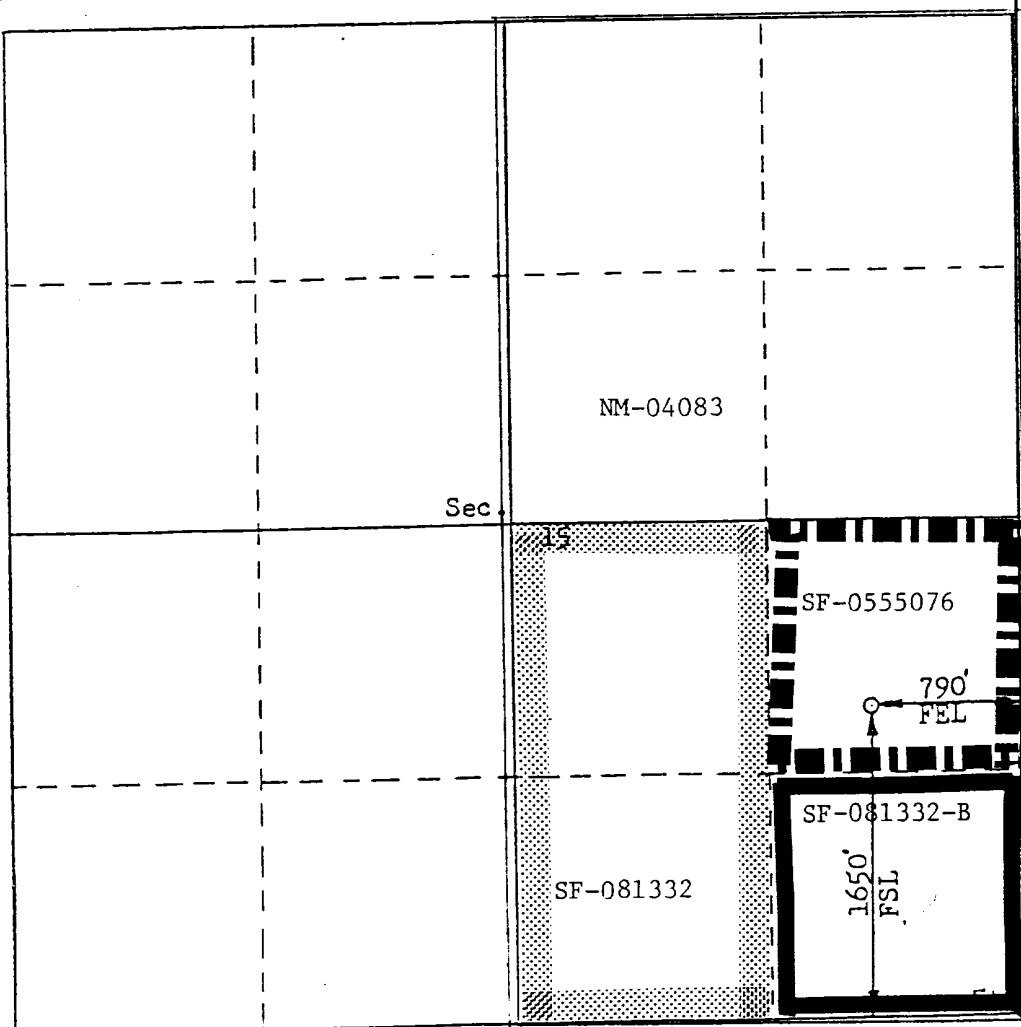
Operator <b>READING &amp; BATES PETROLEUM CO.</b>			Lease <b>HOWARD FEDERAL 15</b>		Well No. <b>43-25</b>
Unit Letter <b>I</b>	Section <b>15</b>	Township <b>25 North</b>	Range <b>2 West</b>	County <b>Rio Arriba</b>	
Actual Footage Location of Well: <b>1650</b> feet from the <b>South</b> line and <b>790</b> feet from the <b>East</b> line					
Ground Level Elev: <b>7257</b>	Producing Formation <b>Greenhorn</b> <b>Mancos - <del>Greenhorn</del> Dakota</b>		Pool <b>Gavilan Greenhorn - <del>Greenhorn</del> Dakota</b> <b>Gavilan Mancos <del>Ext</del></b>		Dedicated Acreage: <b>320/320</b> Acres

1. Outline the acreage dedicated to the subject well by colored pencil or hatchure marks on the plat below.
2. If more than one lease is dedicated to the well, outline each and identify the ownership thereof (both as to working interest and royalty).
3. If more than one lease of different ownership is dedicated to the well, have the interests of all owners been consolidated by communitization, unitization, force-pooling, etc?

☒ Yes ☐ No If answer is "yes," type of consolidation Communitization

If answer is "no," list the owners and tract descriptions which have actually been consolidated. (Use reverse side of this form if necessary.) \_\_\_\_\_

No allowable will be assigned to the well until all interests have been consolidated (by communitization, unitization, forced-pooling, or otherwise) or until a non-standard unit, eliminating such interests, has been approved by the Commission.



CERTIFICATION

I hereby certify that the information contained herein is true and complete to the best of my knowledge and belief.

FOR: READING & BATES PETR. CO.  
ORIGINAL SIGNED BY

Name **EWELL N. WALSH**  
Ewell N. Walsh, P.E.

Position  
President

Company  
Walsh Engr. & Prod. Corp.

Date  
11/6/85

I hereby certify that the well location shown on this plat was plotted from field notes of actual surveys made by me or under my supervision, and that the same is true and correct to the best of my knowledge and belief.

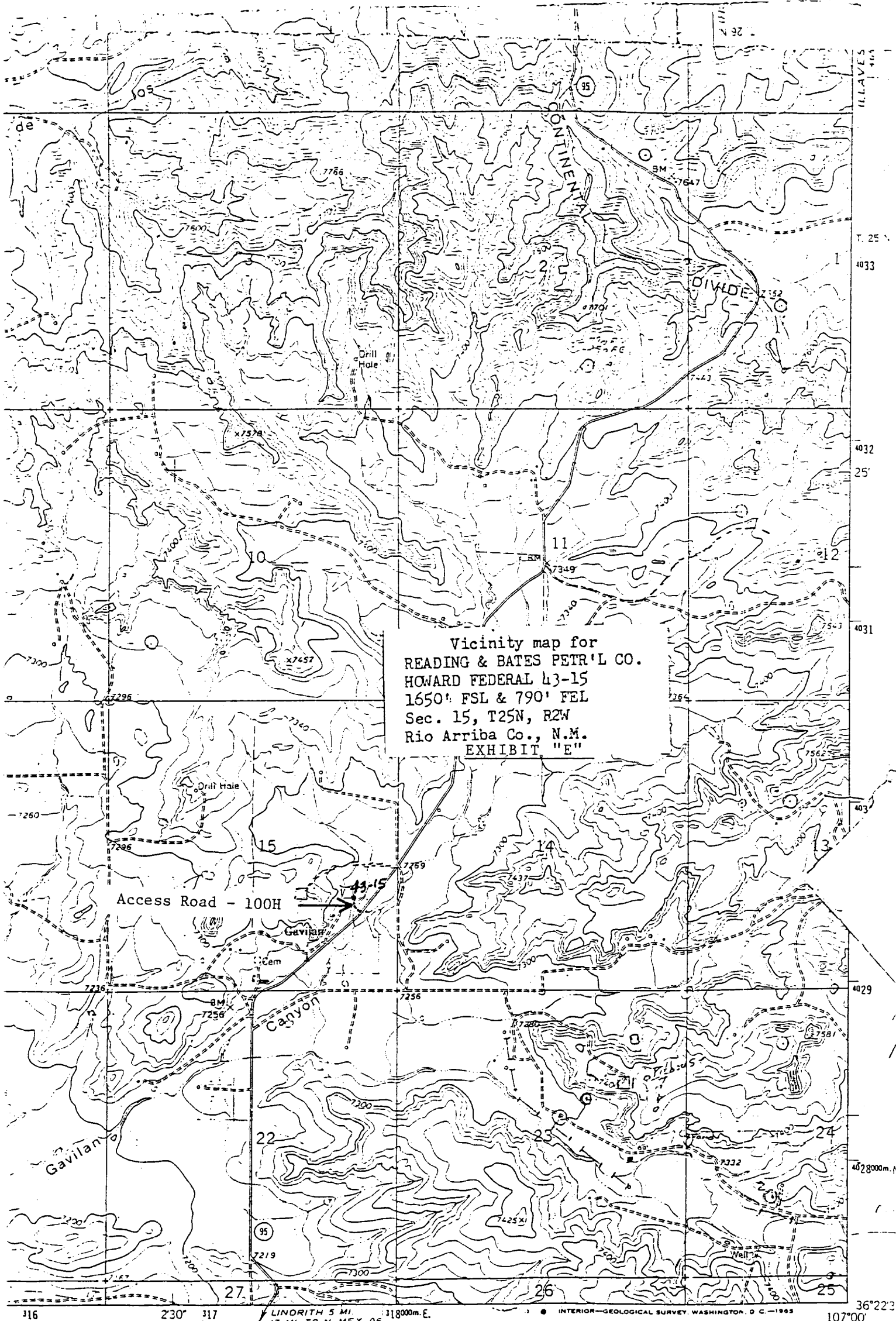
Date Surveyed  
Nov. 5, 1985

Registered Professional Engineer  
and Land Surveyor

**Fred B. Kerr Jr.**

Certificate No.

3950



Vicinity map for  
READING & BATES PETR'L CO.  
HOWARD FEDERAL 43-15  
1650' FSL & 790' FEL  
Sec. 15, T25N, R2W  
Rio Arriba Co., N.M.  
EXHIBIT "E"

Access Road - 100H

Canyon

Gavilan

1 MILE  
7000 FEET  
1 KILOMETER

NEW MEXICO

ROAD CLASSIFICATION

Unimproved dirt

State Route

LINDRITH 5 MI.  
17 MI. TO N. MEX. 96

INTERIOR-GEOLOGICAL SURVEY, WASHINGTON, D. C. - 1965

36°22'30"

107°00'