

UNITED STATES
DEPARTMENT OF THE INTERIOR
BUREAU OF LAND MANAGEMENT

APPLICATION FOR PERMIT TO DRILL, DEEPEN, OR PLUG BACK

1a. TYPE OF WORK

DRILL ☒

DEEPEN ☐

PLUG BACK ☐

b. TYPE OF WELL

OIL
WELL ☐

GAS
WELL ☒

OTHER

SINGLE
ZONE ☒

MULTIPLE
ZONE ☐

2. NAME OF OPERATOR

Union Texas Petroleum

3. ADDRESS OF OPERATOR

375 U.S. Highway 64, Farmington New Mexico 87401

4. LOCATION OF WELL (Report location clearly and in accordance with any instructions from BLM.)

At surface 1120' FSL & 1737' FWL

At proposed prod. zone

Same as above

JUL 21 1986

14. DISTANCE IN MILES AND DIRECTION FROM NEAREST TOWN OR POST OFFICE*

3 miles W-SW of Ojito, New Mexico

BUREAU OF LAND MANAGEMENT
FARMINGTON RESOURCE AREA

16. DISTANCE FROM PROPOSED*

LOCATION TO NEAREST
PROPERTY OR LEASE LINE, FT.
(Also to nearest drg. unit line, if any)

1120 from lease

1120 from DU

16. NO. OF ACRES IN LEASE

640

19. DISTANCE FROM PROPOSED LOCATION*

TO NEAREST WELL, DRILLING, COMPLETED,
OR APPLIED FOR, ON THIS LEASE, FT.

1108'

19. PROPOSED DEPTH

6150'

17. NO. OF ACRES ASSIGNED
TO THIS WELL

319.28 S/2 320

20. ROTARY OR CABLE TOOLS

Rotary

21. ELEVATIONS (Show whether DP, RT, GR, etc.) DRILLING OPERATIONS AUTHORIZED ARE

7150' ground (graded) SUBJECT TO COMPLIANCE WITH ATTACHED

22. APPROX. DATE WORK WILL START*

August 15, 1986

23. "GENERAL REQUIREMENTS AND CEMENTING PROGRAM"

This action is subject to technical and
procedural review pursuant to 43 CFR 3165.3
and appeal pursuant to 43 CFR 3165.4.

SIZE OF HOLE	SIZE OF CASING	WEIGHT PER FOOT	SETTING DEPTH	
13-3/4"	9-5/8"	32.3	300'	270 sxs. (318 cu.ft.)
8-3/4"	7"	23	3980'	365 sxs. (904 cu.ft.)
6-1/4"	4-1/2" liner	10.5	3780' -6150'	190 sxs. (298 cu.ft.)

Union Texas Petroleum wishes to advise we intend to drill 13-3/4" hole with mud to 300+ and set 9-5/8" 32.3#, H-40, ST&C csg. to 300' + cementing to surface with 270 sxs. (318 cu.ft.) CI "B" with 2% CaCl2 and 1/4# flocele/sk. Wait on cement for 12 hrs.

Nipple up test BOP. Drill 8-3/4" hole with mud out of surface to 3980+. Log well. Set 7", 23#, K-55, ST&C intermediate csg. to 3980+ cementing to the surface with 280 sxs. (804 cu.ft.) 65-35 POZ with 12% gel and 12-1/4# gilsonite per sack tailed by 85 sxs. (100 cu.ft) CI "B" with 2% CaCl2.

Drill 6-1/4" hole, with natural gas, out of intermediate to a TD of 6150'. Log the well, run 4-1/2" 10.5#, K-55, ST&C liner from 3780+ to 6150'+. Cement liner into intermediate csg. with 190 sxs (298 cu.ft.) 50-50 POZ with 4% gel, 6-1/4# gilsonite/sack, and 10# salt/sk.

Following perforation and treatment of the Mesaverde formation, standard production equipment will be installed.

IN ABOVE SPACE DESCRIBE PROPOSED PROGRAM: If proposal is to deepen or plug back, give data on present productive zone and proposed new productive zone. If proposal is to drill or deepen directionally, give pertinent data on subsurface locations and measured and true vertical depths. Give blowout preventer program, if any.

24.

SIGNED

Robert C. Frank

TITLE

Permit Coordinator

DATE

7/18/86

(This space for Federal or State office use)

PERMIT NO.

APPROVED DATE

AUG 22 1986

DATE

AUG 19 1986

APPROVED BY

TITLE

CONDITIONS OF APPROVAL, IF ANY:

NMOCC

OIL CON. DIV.
DIST. 3

AS AMENDED
K. R. Fellows
AREA MANAGER

*See Instructions On Reverse Side

NEW MEXICO OIL CONSERVATION COMMISSION
WELL LOCATION AND ACREAGE DEDICATION PLAT

Form C-102
Supersedes C-128
Effective 1-1-65

All distances must be from the outer boundaries of the Section.

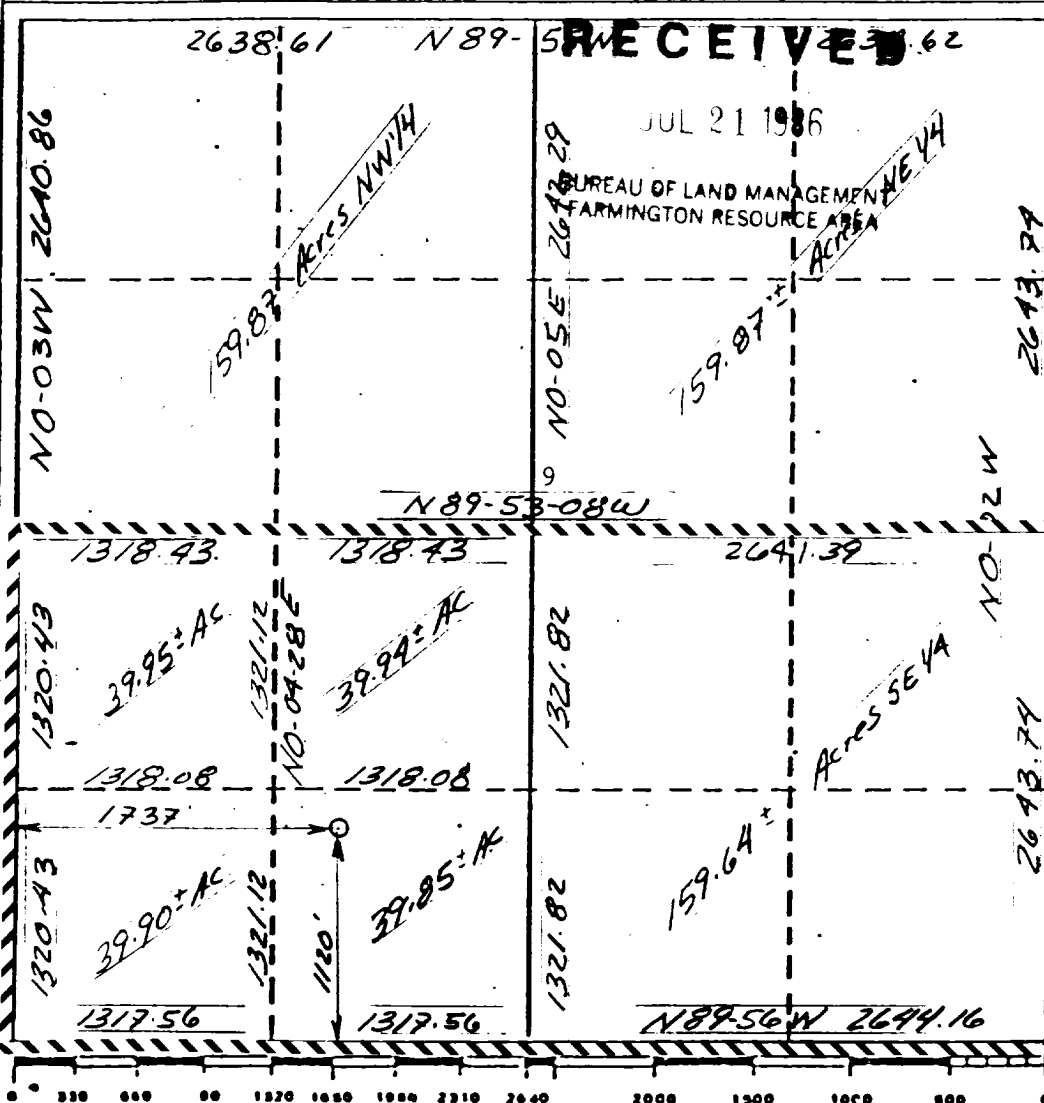
Operator UNION TEXAS PETROLEUM CORPORATION		Lease MCCRODEN "A"		Well No. 8
Unit Letter N	Section 9	Township 25 NORTH	Range 3 WEST	County RIO ARriba
Actual Footage Location of Wells 1120 feet from the SOUTH line and 1737 feet from the WEST line				
Ground Level Elev. 7150	Producing Formation MESAVERDE	Pool BLANCO	Dedicated Acreage 320 Acres	

1. Outline the acreage dedicated to the subject well by colored pencil or hachure marks on the plat below.
2. If more than one lease is dedicated to the well, outline each and identify the ownership thereof (both as to working interest and royalty).
3. If more than one lease of different ownership is dedicated to the well, have the interests of all owners been consolidated by communitization, unitization, force-pooling, etc?

☐ Yes ☐ No If answer is "yes," type of consolidation

If answer is "no," list the owners and tract descriptions which have actually been consolidated. (Use reverse side of this form if necessary.)

No allowable will be assigned to the well until all interests have been consolidated (by communitization, unitization, forced-pooling, or otherwise) or until a non-standard unit, eliminating such interests, has been approved by the Commission.



CERTIFICATION

I hereby certify that the information contained herein is true and complete to the best of my knowledge and belief.

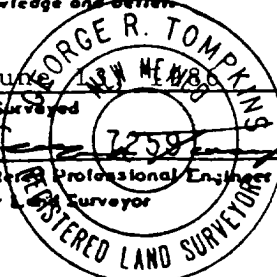
Robert C. Frank

Name
Robert C. Frank
Position
Permit Coordinator
Company
Union Texas Petroleum
Date
July 18, 1986

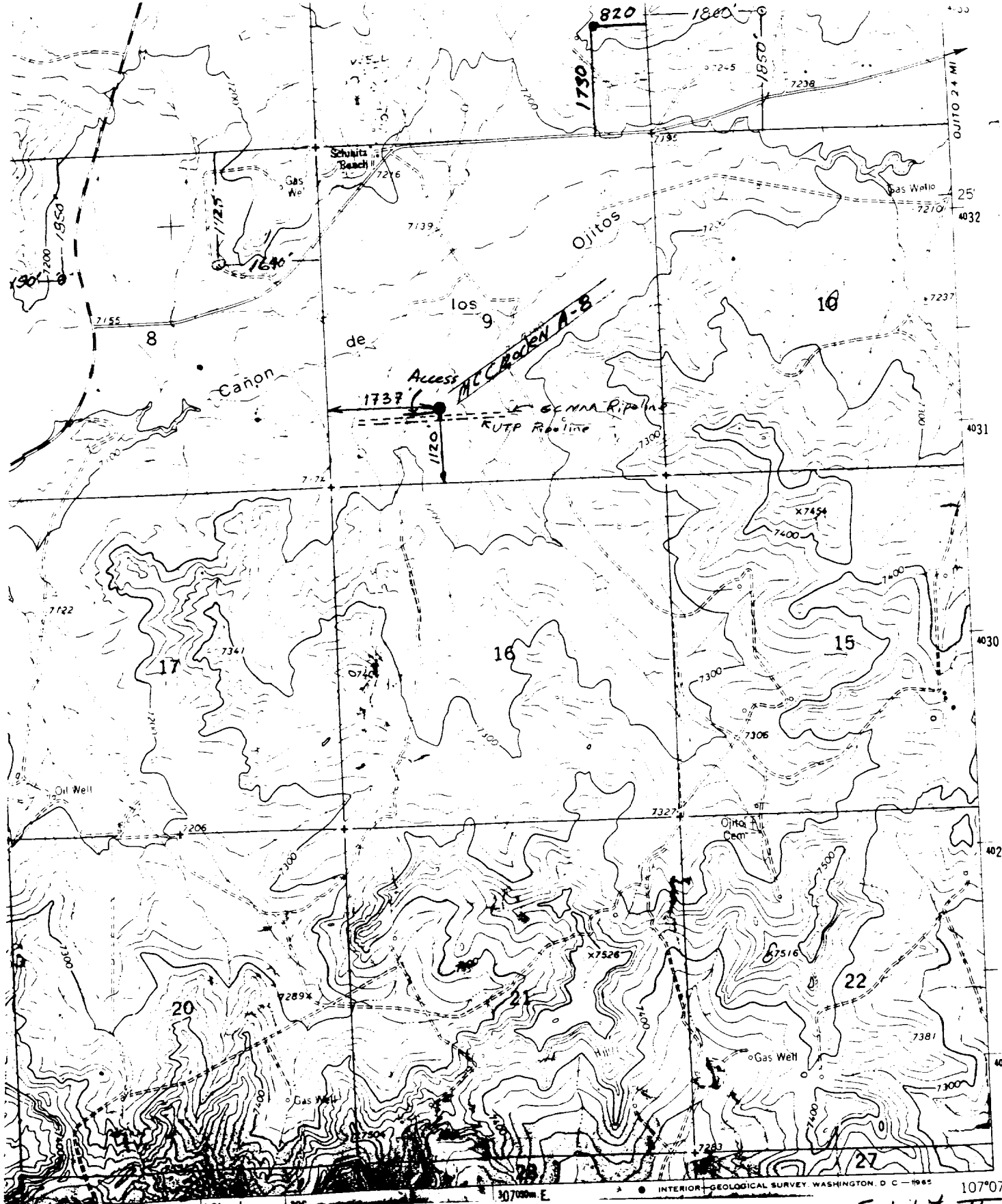
I hereby certify that the well location shown on this plat was plotted from field notes of actual surveys made by me or under my supervision, and that the same is true and correct to the best of my knowledge and belief.

June 18, 1986

Date Surveyed
7259
Registered Professional Engineer and/or Licensed Surveyor



Certificate No.
7259



UNION TEXAS PETROLEUM CORPORATION
 McCroden "A" #8
 SE $\frac{1}{4}$ SW $\frac{1}{4}$, Sec. 9, T25N, R3W, N.M.P.M.,
 Rio Arriba County, New Mexico

FICATION

Light-duty

Route

Exhibit II

LINDRI
 4356 / 54

UNION TEXAS PETROLEUM CORPORATION