

UNITED STATES
DEPARTMENT OF THE INTERIOR
GEOLOGICAL SURVEY

APPLICATION FOR PERMIT TO DRILL, DEEPEN, OR PLUG BACK

1a. TYPE OF WORK

DRILL ☒DEEPEN ☐PLUG BACK ☐

b. TYPE OF WELL

OIL
WELL ☒GAS
WELL ☐

OTHER

2. NAME OF OPERATOR

Curtis J. Little

3. ADDRESS OF OPERATOR

P.O.Box 1258, Farmington, New Mexico, 87499

4. LOCATION OF WELL (Report location clearly and in accordance with any State requirements.)*

At surface

1650' FSL-1650' FEL
At proposed prod. zone

14. DISTANCE IN MILES AND DIRECTION FROM NEAREST TOWN OR POST OFFICE*

10 miles North of Lindrith, New Mexico

15. DISTANCE FROM PROPOSED*

LOCATION TO NEAREST
PROPERTY OR LEASE LINE, FT.
(Also to nearest drlg. unit line, if any)

330'

18. DISTANCE FROM PROPOSED LOCATION*

TO NEAREST WELL, DRILLING, COMPLETED,
OR APPLIED FOR, ON THIS LEASE, FT.

1200'

21. ELEVATIONS (Show whether DF, RT, GR, etc.)

7303' GR

16. NO. OF ACRES IN LEASE

320

19. PROPOSED DEPTH

8284'

17. NO. OF ACRES ASSIGNED
TO THIS WELL

40

20. ROTARY OR CABLE TOOLS

Rotary

22. APPROX. DATE WORK WILL START*

July 30, 1987

23. PROPOSED CASING AND CEMENTING PROGRAM

SIZE OF HOLE	SIZE OF CASING	WEIGHT PER FOOT	SETTING DEPTH
12 1/4"	9 5/8"	32.3#, H-40	300'
8 3/4"	4 1/2"	10.5#, K-55	4025'
7 7/8"	4 1/2"	10.5#, K-55	6900'
7 7/8"	4 1/2"	11.6#, K-55	8284'

This action is subject to technical and
procedural review pursuant to 40 CFR 3165.
and applicable provisions of 40 CFR 3165.4.160 sacks (189 cu ft)
Stage 3: 670 sacks (1163 cu ft)
Stage 2: 420 sacks (718 cu ft)
Stage 1: 375 sacks (544 cu ft)

Propose to spud in San Jose formation. Drill to 300'. Run and cement surface Casing with cement returns to surface. WOC 12 hrs., pressure test to 600 psi/30 mins. Drill 8 3/4" hole until Pictured Cliffs is penetrated then reduce hole size to 7 7/8". Circulating medium will be fresh water mud. No abnormal pressures or poisonous gas is anticipated. IEL and GR-fdc/cnl will be run at TD. Casing will be run and cemented to allow completion of the Gallup and Dakota formation. It is anticipated the well will be drilled by August 31, 1987.

Gas is not dedicated.

IN ABOVE SPACE DESCRIBE PROPOSED PROGRAM: If proposal is to deepen or plug back, give data on old well at proposed zone and proposed new productive zone. If proposal is to drill or deepen directionally, give pertinent data on subsurface locations and measured and true vertical depths. Give blowout preventer program, if any.

24.

SIGNED

Sylvia F. Little

TITLE Operator

DATE July 10, 1987

PERMIT NO.

APPROVAL DATE

APPROVED BY

CONDITIONS OF APPROVAL, IF ANY:

TITLE

NMOCC

*See Instructions On Reverse Side

APPROVED
AS AMENDED

DATE

JUL 30 1987
AREA MANAGER

OIL CONSERVATION DIVISION

P. O. BOX 2088

Form C-102
Revised 10-1-78STATE OF NEW MEXICO
ENERGY AND MINERALS DEPARTMENT

SANTA FE, NEW MEXICO 87501

All distances must be from the outer boundaries of the Section.

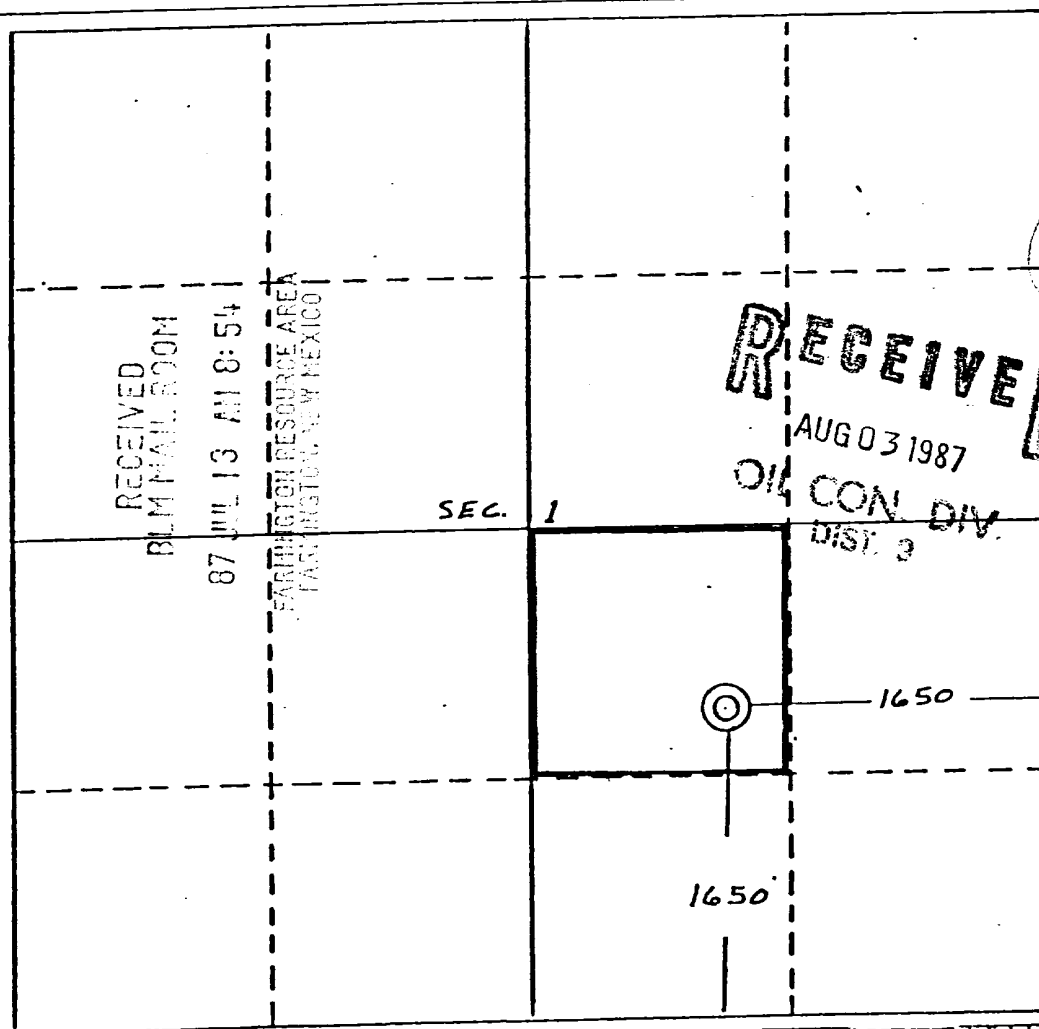
Operator Curtis J. Little		Lease Hurt Federal		Well No. 3
Unit Letter J	Section 1	Township 25 North	Range 3 West	County Rio Arriba
Actual Footage Location of Well: 1650 feet from the South line and 1650 feet from the East line				
Ground Level Elev. 7303	Producing Formation Gallup/Dakota	Pool Ojito	Dedicated Acreage: 40 Acres	

1. Outline the acreage dedicated to the subject well by colored pencil or hatchure marks on the plat below.
2. If more than one lease is dedicated to the well, outline each and identify the ownership thereof (both as to working interest and royalty).
3. If more than one lease of different ownership is dedicated to the well, have the interests of all owners been consolidated by communitization, unitization, force-pooling, etc?

☐ Yes ☐ No If answer is "yes," type of consolidation NA

If answer is "no," list the owners and tract descriptions which have actually been consolidated. (Use reverse side of this form if necessary.)

No allowable will be assigned to the well until all interests have been consolidated (by communitization, unitization, forced-pooling, or otherwise) or until a non-standard unit, eliminating such interests, has been approved by the Division.



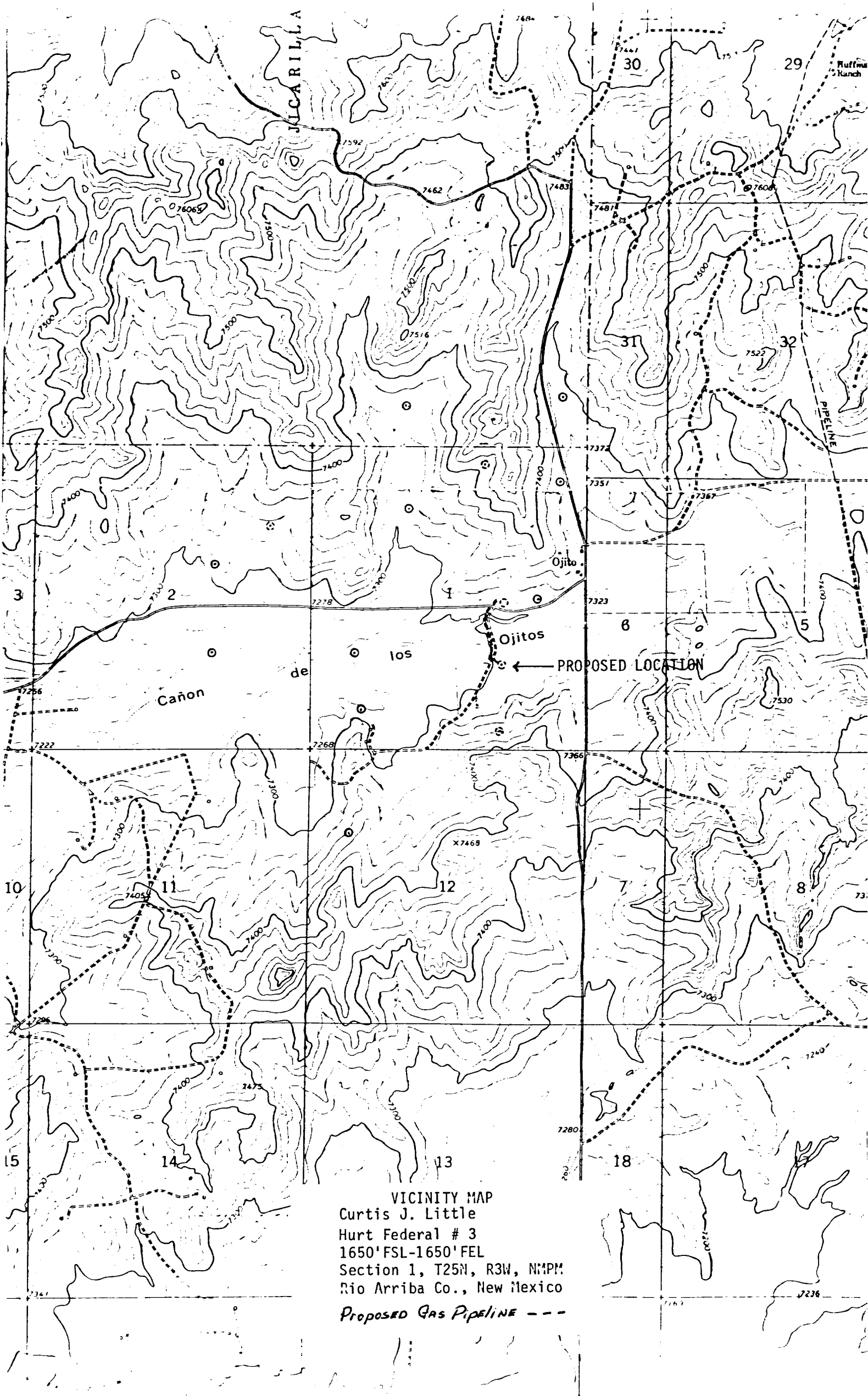
CERTIFICATION

I hereby certify that the information contained herein is true and complete to the best of my knowledge and belief.

Name Sylvia F. LittlePosition Sylvia F. Little
OperatorCompany Curtis J. LittleDate July 8, 1987

I hereby certify that the well location shown on this plat was obtained from field notes of observations made by me or under my supervision and that the same is true and correct to the best of my knowledge.

Date Surveyed July 1, 1987Registered Professional Engineer
and/or Land SurveyorEdgar L. RisenhooverCertificate No. 5979Edgar L. Risenhoover, L.S.



VICINITY MAP
Curtis J. Little
Hurt Federal # 3
1650' FSL-1650' FEL
Section 1, T25N, R3W, N1PM
Rio Arriba Co., New Mexico
Proposed Gas Pipeline - - -