

UNITED STATES  
DEPARTMENT OF THE INTERIOR  
BUREAU OF LAND MANAGEMENT

SUBMIT IN TRIPLICATE\*  
(Other instructions on  
reverse side)

Form approved.  
Budget Bureau No. 1004-0136  
Expires August 31, 1985

RECEIVED  
BLM MAIL ROOM

APPLICATION FOR PERMIT TO DRILL, DEEPEN, OR PLUG BACK

1a. TYPE OF WORK

DRILL ☒

DEEPEN ☐

PLUG BACK ☐

b. TYPE OF WELL

OIL  
WELL ☒

GAS  
WELL ☐

OTHER ☐

SINGLE  
ZONE ☒

MULTIPLE  
ZONE ☐

2. NAME OF OPERATOR

Jack A. Cole

3. ADDRESS OF OPERATOR

P.O. Box 191, Farmington, N.M. 87499

4. LOCATION OF WELL (Report location clearly and in accordance with any State requirements.)\*

At surface

2290' FSL, 2050' FWL

At proposed prod. zone

Same

14. DISTANCE IN MILES AND DIRECTION FROM NEAREST TOWN OR POST OFFICE\*

8 miles NW Counselors Trading Post

15. DISTANCE FROM PROPOSED\*

LOCATION TO NEAREST  
PROPERTY OR LEASE LINE, FT.  
(Also to nearest drig. unit line, if any)

16. NO. OF ACRES IN LEASE

1202.88

17. NO. OF ACRES ASSIGNED  
TO THIS WELL

40

18. DISTANCE FROM PROPOSED LOCATION\*

TO NEAREST WELL, DRILLING, COMPLETED,  
OR APPLIED FOR, ON THIS LEASE, FT.

19. PROPOSED DEPTH

5668'

20. ROTARY OR CABLE TOOLS

Rotary

21. ELEVATIONS (Show whether DF, RT, GR, etc.)

6775' GR

SUBJECT TO COMPLIANCE WITH ATTACHED  
"GENERAL REQUIREMENTS"

22. APPROX. DATE WORK WILL START\*

September 1, 1987

23. PROPOSED CASING AND CEMENTING PROGRAM

This action is subject to technical and  
procedural review pursuant to 43 CFR 3165.3  
and appeal pursuant to 43 CFR 3165.4.

SIZE OF HOLE	SIZE OF CASING	WEIGHT PER FOOT	SETTING DEPTH	
12 1/4"	8 5/8"	24.0 J-55	250'	250 sacks
7 7/8"	4 1/2"	10.50 K-55	5668'	To be determined after logging.

All producing intervals in Gallup formation will be stimulated as necessary.

Exhibits:

"A" Location and Elevation plat  
"B" Ten point compliance program  
"C" Blowout preventor diagram  
"D" Multi-point requirements of APD

"E" Access road to location  
"F" Drill rig layout  
"G" Fracturing program layout  
"H" Location profile  
"I" Proposed pipeline

The gas for this well is committed.

RECEIVED

OCT 02 1987

OIL CON. DIV.  
DIST. 3

IN ABOVE SPACE DESCRIBE PROPOSED PROGRAM: If proposal is to deepen or plug back, give data on present productive zone and proposed new productive zone. If proposal is to drill or deepen directionally, give pertinent data on subsurface locations and measured and true vertical depths. Give blowout preventer program, if any.

24.

SIGNED

*Dorothy Blannett*

TITLE Production Superintendent

DATE July 10, 1987

(This space for Federal or State office use)

PERMIT NO.

APPROVAL DATE

APPROVED BY

TITLE

CONDITIONS OF APPROVAL, IF ANY:

APPROVED

AS AMENDED

DATE

*Robert M. ...*  
AREA MANAGER

\*See Instructions On Reverse Side

## OIL CONSERVATION DIVISION

STATE OF NEW MEXICO  
ENERGY AND MINERALS DEPARTMENTP. O. BOX 2088  
SANTA FE, NEW MEXICO 87501Form C-102  
Revised 10-1-78

All distances must be from the outer boundaries of the Section.

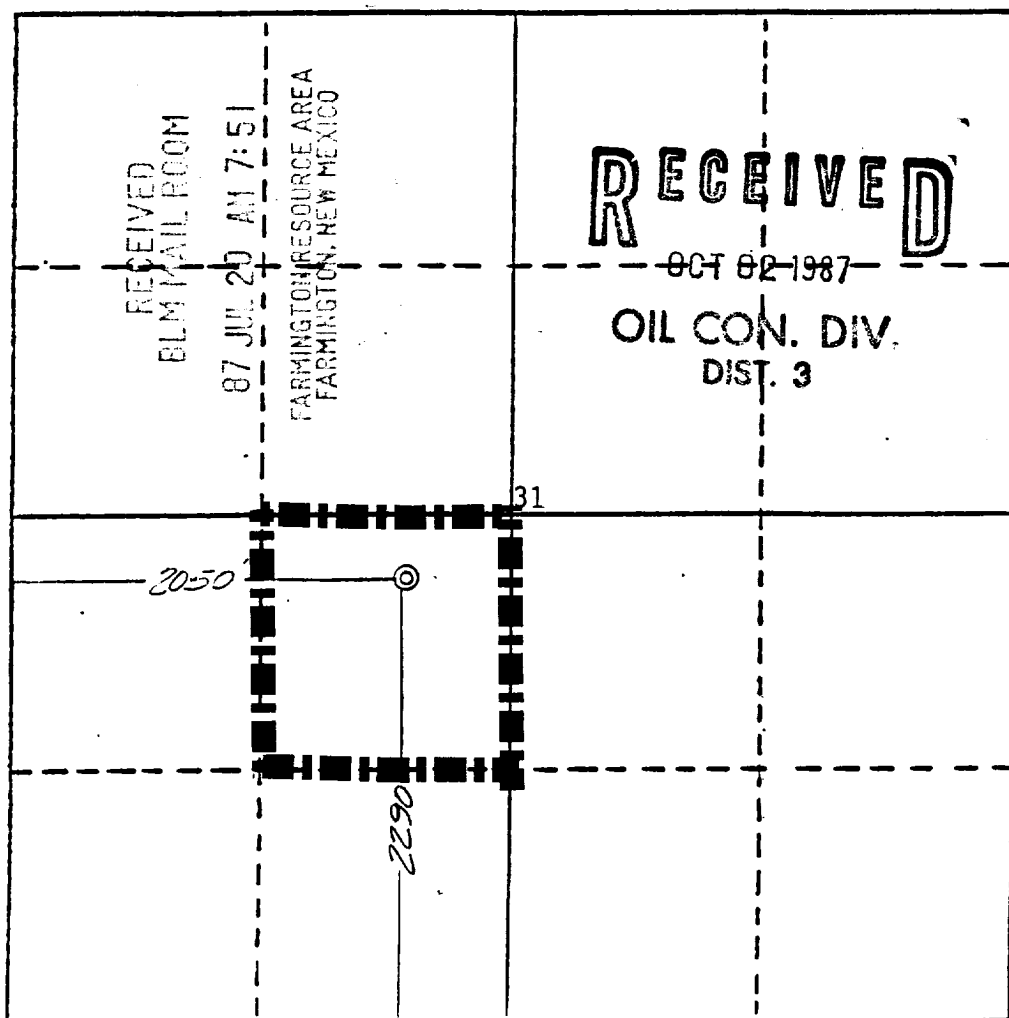
Operator <b>JACK A. COLE</b>		Lease <b>MARCUS A</b>		Well No. <b># 14</b>
Unit Letter <b>K</b>	Section <b>31</b>	Township <b>24 NORTH</b>	Range <b>6 WEST</b>	County <b>RIO ARRIBA</b>
Actual Footage Location of Wells 2290 feet from the <b>SOUTH</b> line and 2050 feet from the <b>WEST</b> line				
Ground Level Elev. <b>6775</b>	Producing Formation <b>GALLUP</b>	Pool <b>LYBROOK GALLUP EXT</b>	Dedicated Acreage <b>40</b> Acres	

1. Outline the acreage dedicated to the subject well by colored pencil or hachure marks on the plat below.
2. If more than one lease is dedicated to the well, outline each and identify the ownership thereof (both as to working interest and royalty).
3. If more than one lease of different ownership is dedicated to the well, have the interests of all owners been consolidated by communitization, unitization, force-pooling, etc?

☐ Yes ☐ No If answer is "yes," type of consolidation \_\_\_\_\_

If answer is "no," list the owners and tract descriptions which have actually been consolidated. (Use reverse side of this form if necessary.) \_\_\_\_\_

No allowable will be assigned to the well until all interests have been consolidated (by communitization, unitization, forced-pooling, or otherwise) or until a non-standard unit, eliminating such interests, has been approved by the Division.



## CERTIFICATION

I hereby certify that the information contained herein is true and complete to the best of my knowledge and belief.

*Dewayne Blancett*  
Name

Dewayne Blancett

Position

Production Superintendent

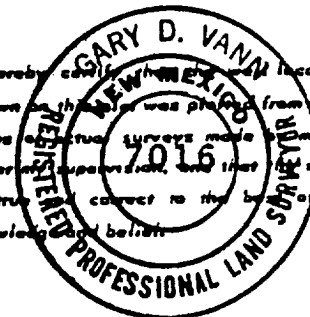
Company

Jack A. Cole

Date

July 10, 1987

I hereby certify that the location shown on this plat was plotted from field notes of true surveys made by me or under my supervision, and that the same is true and correct to the best of my knowledge and belief.



Date Surveyed

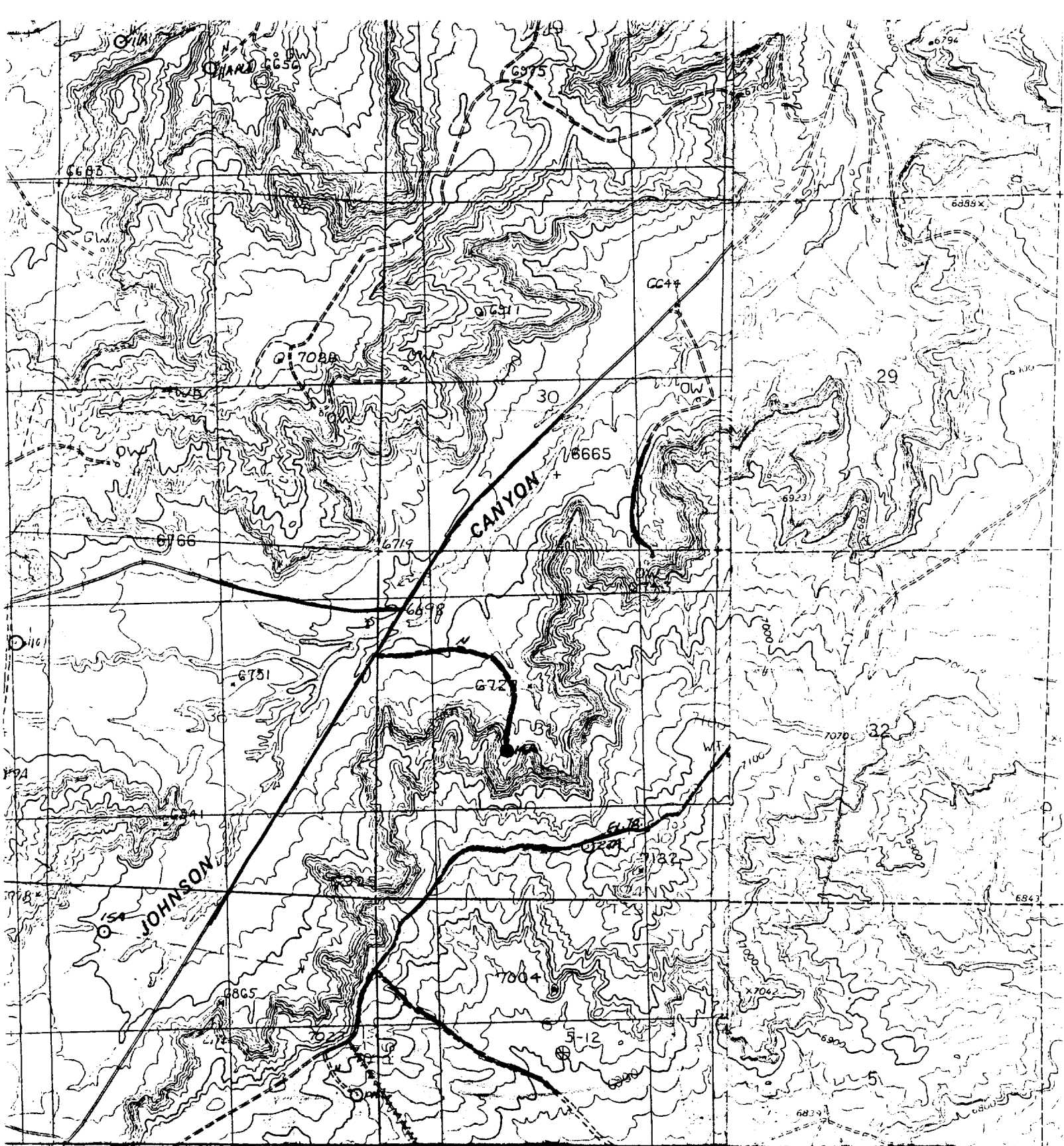
July 2, 1987

Registered Professional Engineer  
and/or Land Surveyor

*Gary D. Vann*  
Gary D. Vann

Certificate No.

7016



- NEW ROAD
- - - EXISTING ROAD
- x-x- PIPELINE

JACK A. COLE  
 MARCUS # 14 A  
 2290' F/SL 2050' F/WL 1910 000  
 SEC. 31, T24N, R6W, NMPM FEET  
 RIO ARRIBA COUNTY, NM

d by the Geolo  
 ds from aerial  
 162 Field checked  
 ican datum  
 coordinate system  
 ator grid ticks.  
 gas field