

UNITED STATES
DEPARTMENT OF THE INTERIOR
BUREAU OF LAND MANAGEMENT

APPLICATION FOR PERMIT TO DRILL, DEEPEN, OR PLUG BACK

1a. TYPE OF WORK

DRILL ☒

DEEPEN ☐

PLUG BACK ☐

b. TYPE OF WELL

OIL
WELL ☒

GAS
WELL ☒

OTHER

SINGLE
ZONE ☐

MULTIPLE
ZONE ☒

2. NAME OF OPERATOR

Curtis J. Little Oil and Gas

3. ADDRESS OF OPERATOR

P.O. Box 1258, Farmington, N.M. 87499

4. LOCATION OF WELL (Report location clearly and in accordance with any State requirements.)*
At surface

2703' FNL & 790' FEL

At proposed prod. zone

Same

14. DISTANCE IN MILES AND DIRECTION FROM NEAREST TOWN OR POST OFFICE*

5. LEASE DESIGNATION AND SERIAL NO.

SF080539

6. IF INDIAN, ALLOTTEE OR TRIBE NAME

7. UNIT AGREEMENT NAME

8. FARM OR LEASE NAME

Hurt Federal

9. WELL NO.

5

10. FIELD AND POOL, OR WILDCAT

~~W. Little~~
~~Office~~ Gallup-Dakota

11. SEC., T., R., M., OR BLK.
AND SURVEY OR AREA

H
2-Twn. 25N- Rng. 3W

12. COUNTY OR PARISH

Rio Arriba

13. STATE

N.M.

10. DISTANCE FROM PROPOSED*

LOCATION TO NEAREST
PROPERTY OR LEASE LINE, FT.
(Also to nearest drlg. unit line, if any)

16. NO. OF ACRES IN LEASE

320

17. NO. OF ACRES ASSIGNED
TO THIS WELL

160

18. DISTANCE FROM PROPOSED LOCATION*
TO NEAREST WELL, DRILLING, COMPLETED,
OR APPLIED FOR, ON THIS LEASE, FT.

19. PROPOSED DEPTH

8300

20. ROTARY OR CABLE TOOLS

Rotary

21. ELEVATIONS (Show whether DF, RT, GR, etc.)

7288' GR.

22. APPROX. DATE WORK WILL START*

1/15/88

23. PROPOSED CASING AND CEMENTING PROGRAM

SIZE OF HOLE	SIZE OF CASING	WEIGHT PER FOOT	SETTING DEPTH	QUANTITY OF CEMENT
SEE ATTACHED				

Gas is not dedicated.

RECEIVED
FEB 25 1988
OIL CON. DIV.
DIST. 3

IN ABOVE SPACE DESCRIBE PROPOSED PROGRAM: If proposal is to deepen or plug back, give data on present productive zone and proposed new productive zone. If proposal is to drill or deepen directionally, give pertinent data on subsurface locations and measured and true vertical depths. Give blowout preventer program, if any.

24.

SIGNED

Joe Elledge

TITLE

Agent

DATE

12-17-1987

(This space for Federal or State office use)

PERMIT NO.

APPROVAL DATE

APPROVED BY

TITLE

DATE

CONDITIONS OF APPROVAL, IF ANY:

R-7588-A

AMCCC

*See Instructions On Reverse Side

Title 18 U.S.C. Section 1001, makes it a crime for any person knowingly and willfully to make to any department or agency of the United States any false, fictitious or fraudulent statements or representations as to any matter within its jurisdiction.

Curtis J. Little Hurt Federal No. 5

1. Surface Formation: San Jose

2. Estimated Formation Tops:

Ojo Alamo	3537
Fruitland	3662
Pictured Cliffs	3802
Cliff House	5512
Point Lookout	5962
Gallup	6737
Greenhorn	7962
Dakota	8062
T.D	8300

3. Estimated Depth of Anticipated Oil, Gas, Water or Minerals:

Oil 6737 Gas 8062

4. Proposed Casing Program:

0-800' 9 5/8", 32.30 lb.ft., ST&C, J-55 new casing in
12 1/4" Hole; cemented with 400 cu.ft. Class "B" +
1/4 lb. Flocele/sk. Cement to surface.

0-8300' 4 1/2", 11.6 lb./ft., N-80 new casing in 7 7/8"
hole. Cement in three stages. First stage cement
350 cu.ft. 65-35 Pozmix with 6% gel, 0.8% fluid
loss additive, and 12 1/2 lb. Gilsonite/ sk.
followed by 200 cu. ft. 50-50 Pozmix, 2% gel, 0.8%
fluid loss additive. 12 1/2 lb./sk. Gilsonite.
Second stage above stage tool at 6050', 470 cu.
ft. 65-35 Pozmix with 6% gel and 12 1/2 lb.
Gilsonite / sk. followed by 220 cu. ft. 50-50
Pozmix with 2% gel, 12 1/2 lb. Gilsonite/ sk.
Third stage above stage tool at 3800', 1290 cu.
ft. 65-35 Pozmix with 6% gel. All cement stages
designed to circulate to next stage or to surface.

Cement volumes will be adjusted for caliper
volume.

5. Pressure Control Equipment - Blow Out Preventer:

The attached schematic shows the type of blow out
preventer to be used while drilling. The unit will be
tested to 800 psi prior to drilling from under surface pipe.

OIL CONSERVATION DIVISION

STATE OF NEW MEXICO
ENERGY AND MINERALS DEPARTMENTP. O. BOX 2088
SANTA FE, NEW MEXICO 87501Form C-102
Revised 10-1-78

All distances must be from the outer boundaries of the Section.

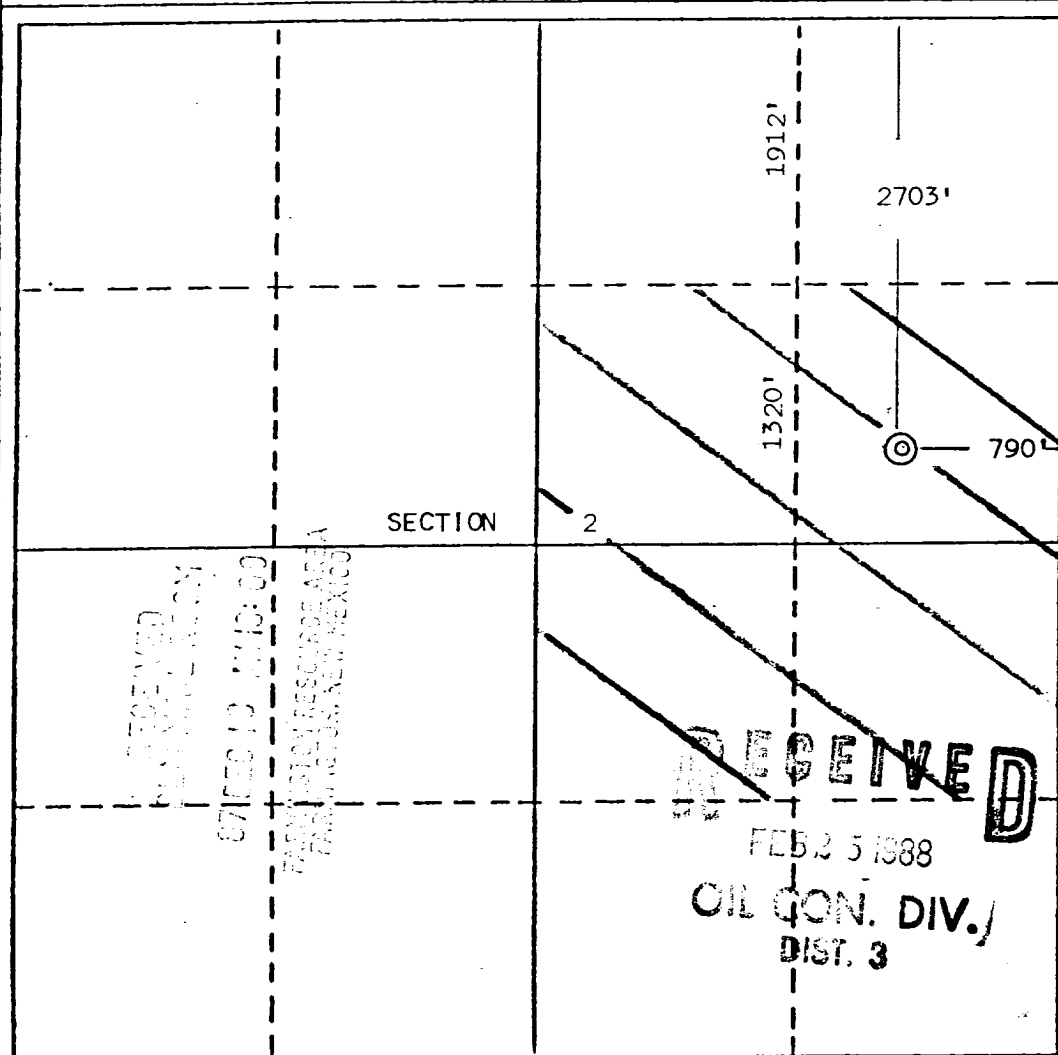
Operator Curtis J. Little			Lease Hurt Federal		Well No. 5
Unit Letter H	Section 2	Township 25 North	Range 3 West	County Rio Arriba	
Actual Footage Location of Well: 2703 feet from the North line and 790 feet from the East line					
Ground Level Elev. 7288	Producing Formation Gallup-Dakota	Pool Ojito <i>W. L. Lincoln</i> Gallup-Dakota		Dedicated Acreage: 160 Acres	

1. Outline the acreage dedicated to the subject well by colored pencil or hatchure marks on the plat below.
2. If more than one lease is dedicated to the well, outline each and identify the ownership thereof (both as to working interest and royalty).
3. If more than one lease of different ownership is dedicated to the well, have the interests of all owners been consolidated by communitization, unitization, force-pooling, etc?

☐ Yes ☐ No If answer is "yes," type of consolidation _____

If answer is "no," list the owners and tract descriptions which have actually been consolidated. (Use reverse side of this form if necessary.) _____

No allowable will be assigned to the well until all interests have been consolidated (by communitization, unitization, forced-pooling, or otherwise) or until a non-standard unit, eliminating such interests, has been approved by the Division.



CERTIFICATION

I hereby certify that the information contained hereby is true and complete to the best of my knowledge and belief.

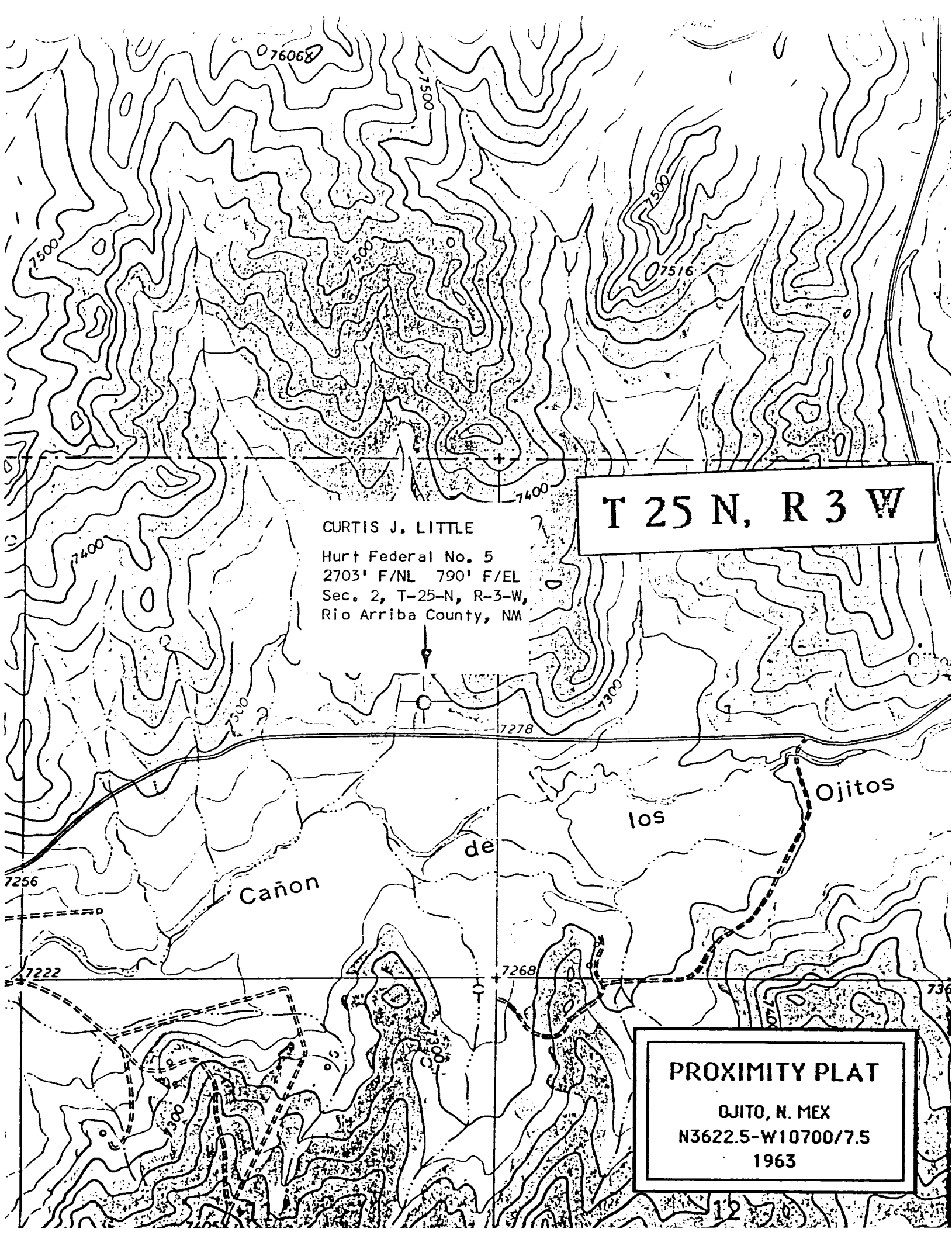
Name
Joe Elledge
Joe Elledge
Position
Agent
Company
Curtis J. Little Oil and Gas
Date
12/16/87

I hereby certify that the location shown on this plat is based on field notes of actual survey made by me or under my supervision, and that the same is true and correct to the best of my knowledge and belief.

Date Surveyed
December 4, 1987

Registered Professional Engineer
and/or Land Surveyor

Edgar L. Risenhoover
Certificate No. 5979
Edgar L. Risenhoover, L.S.



CURTIS J. LITTLE

Hurt Federal No. 5
2703' F/NL 790' F/EL
Sec. 2, T-25-N, R-3-W,
Rio Arriba County, NM

T 25 N, R 3 W

PROXIMITY PLAT

OJITO, N. MEX
N3622.5-W10700/7.5
1963