

UNITED STATES
DEPARTMENT OF THE INTERIOR
BUREAU OF LAND MANAGEMENT

APPLICATION FOR PERMIT TO DRILL, DEEPEN, OR PLUG BACK

1a. TYPE OF WORK

DRILL ☒

DEEPEN ☐

PLUG BACK ☐

b. TYPE OF WELL

OIL
WELL ☒

GAS
WELL ☐

OTHER

SINGLE
ZONE ☒

MULTIPLE
ZONE ☐

2. NAME OF OPERATOR

Elliott Oil Company

3. ADDRESS OF OPERATOR

P.O. Box 1352, Roswell, N.M. 88201

4. LOCATION OF WELL (Report location clearly and in accordance with any State requirements.)*

At surface

600' FSL & 1980' FEL

At proposed prod. zone
same

14. DISTANCE IN MILES AND DIRECTION FROM NEAREST TOWN OR POST OFFICE*

13. DISTANCE FROM PROPOSED*

LOCATION TO NEAREST
PROPERTY OR LEASE LINE, FT.
(Also to nearest drlg. unit line, if any)

16. NO. OF ACRES IN LEASE

1920

18. DISTANCE FROM PROPOSED LOCATION*

TO NEAREST WELL, DRILLING, COMPLETED,
OR APPLIED FOR, ON THIS LEASE, FT.

19. PROPOSED DEPTH

8200

17. NO. OF ACRES ASSIGNED

TO THIS WELL.

160

20. ROTARY OR CABLE TOOLS

Rotary

21. ELEVATIONS (Show whether DF, RT, GR, etc.)

7340 GR

22. APPROX. DATE WORK WILL START*

4/18/88

23. PROPOSED CASING AND CEMENTING PROGRAM

This action is subject to technical and
procedural review pursuant to 43 CFR 3165.3
and appeal pursuant to 43 CFR 3165.4.

SIZE OF HOLE	SIZE OF CASING	WEIGHT PER FOOT	SETTING DEPTH
	SEE ATTACHED		

RECEIVED
BLM MAIL ROOM

88 APR 19 PM 1:15

FARMINGTON FIELD OFFICE AREA
FARMINGTON, NEW MEXICO

SEE ATTACHED

RECEIVED
JUL 01 1988
OIL CON. DIV.
DIST. 3

IN ABOVE SPACE DESCRIBE PROPOSED PROGRAM: If proposal is to deepen or plug back, give data on present productive zone and proposed new productive zone. If proposal is to drill or deepen directionally, give pertinent data on subsurface locations and measured and true vertical depths. Give blowout preventer program, if any.

24.

SIGNED

Joe Elledge

TITLE Agent

DATE 3-21-1988

(This space for Federal or State office use)

PERMIT NO.

APPROVAL DATE

APPROVED BY

TITLE

DATE

CONDITIONS OF APPROVAL, IF ANY:

*See Instructions On Reverse Side

1. Surface Formation: San Jose

2. Estimated Formation Tops:

Ojo Alamo	3412
Kirtland	3504
Pictured Cliffs	3714
Cliff House	5406
Menefee	5528
Point Lookout	5882
Mancos	6047
Gallup	6935
Greenhorn	7952
Dakota	7988
T.D	8200

3. Estimated Depth of Anticipated Oil, Gas, Water or Minerals:

Gas 7988 Oil 6935

4. Proposed Casing Program:

0-800' 8 5/8", 24 lb./ft., J-55 new casing in 12 1/4" hole. Cement with 500 cu. ft. Class B with 2% CaCl₂ containing 1/2 lb./sk. cellophane flakes.

0-8200' 4 1/2", 11.6 lb./ft., K-55 new casing in 7 7/8" casing. Cement in three stages. First stage cement 450 cu. ft. 50-50 Pozmix, 2% gel, 10% salt, 0.8% fluid loss additive, 12 1/2 lb./sk. Gilsonite. Second stage above stage tool at 5950', 550 cu. ft. 65-35 Pozmix with 3% gel, 12 1/2 lb. Gilsonite / sk., and 10% salt, followed by 70 cu. ft. Class "B" neat. Third stage above stage tool at 3900', 1200 cu. ft. 65-35 Pozmix with 6% gel, followed by 70 cu. ft. Class "B" neat. All cement stages designed to circulate to next stage or to surface.

5. Pressure Control Equipment - Blow Out Preventer:

The attached schematic shows the type of blow out preventer to be used while drilling. The unit will be tested to 800 psi prior to drilling from under surface pipe.

6. Drilling Fluids:

Depths	Type	Vis.	Weight	Fluid Loss
0 - 500	gel-chem	50	8.4 - 9	N.C
500 - 8200	gel-chem	30-60	8.4 - 9.5	<10

OIL CONSERVATION DIVISION

STATE OF NEW MEXICO
ENERGY AND MINERALS DEPARTMENTP. O. BOX 2088
SANTA FE, NEW MEXICO 87501Form C-102
Revised 10-1-78

All distances must be from the outer boundaries of the Section.

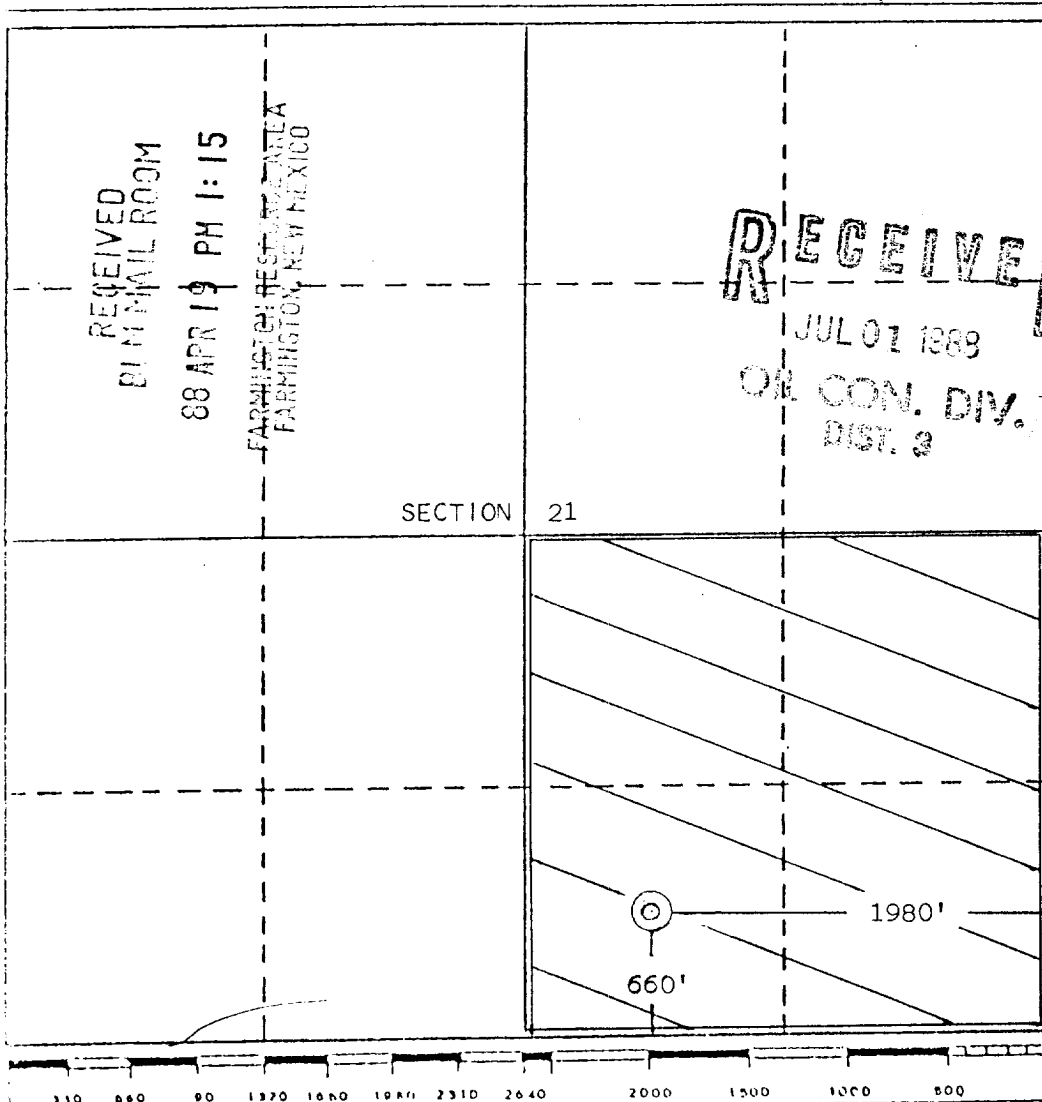
Operator Elliott Oil and Gas Company			Lease Ora		Well No. 5
Unit Letter 0	Section 21	Township 25 North	Range 3 West	County Rio Arriba	
Actual Footage Location of Well:					
660 feet from the South line and		1980 feet from the East line			
Ground Level Elev. 7340	Producing Formation Gallup - Dakota	Pool WEST Lindrith Gallup - Dakota	Dedicated Acreage: 160 Acres		

1. Outline the acreage dedicated to the subject well by colored pencil or hatchure marks on the plat below.
2. If more than one lease is dedicated to the well, outline each and identify the ownership thereof (both as to working interest and royalty).
3. If more than one lease of different ownership is dedicated to the well, have the interests of all owners been consolidated by communitization, unitization, force-pooling, etc?

☐ Yes ☐ No If answer is "yes," type of consolidation _____

If answer is "no," list the owners and tract descriptions which have actually been consolidated. (Use reverse side of this form if necessary.) _____

No allowable will be assigned to the well until all interests have been consolidated (by communitization, unitization, forced-pooling, or otherwise) or until a non-standard unit, eliminating such interests, has been approved by the Division.



CERTIFICATION

I hereby certify that the information contained herein is true and complete to the best of my knowledge and belief.

Name
Joe Elledge
Position
Agent
Company
Elliott Oil Co

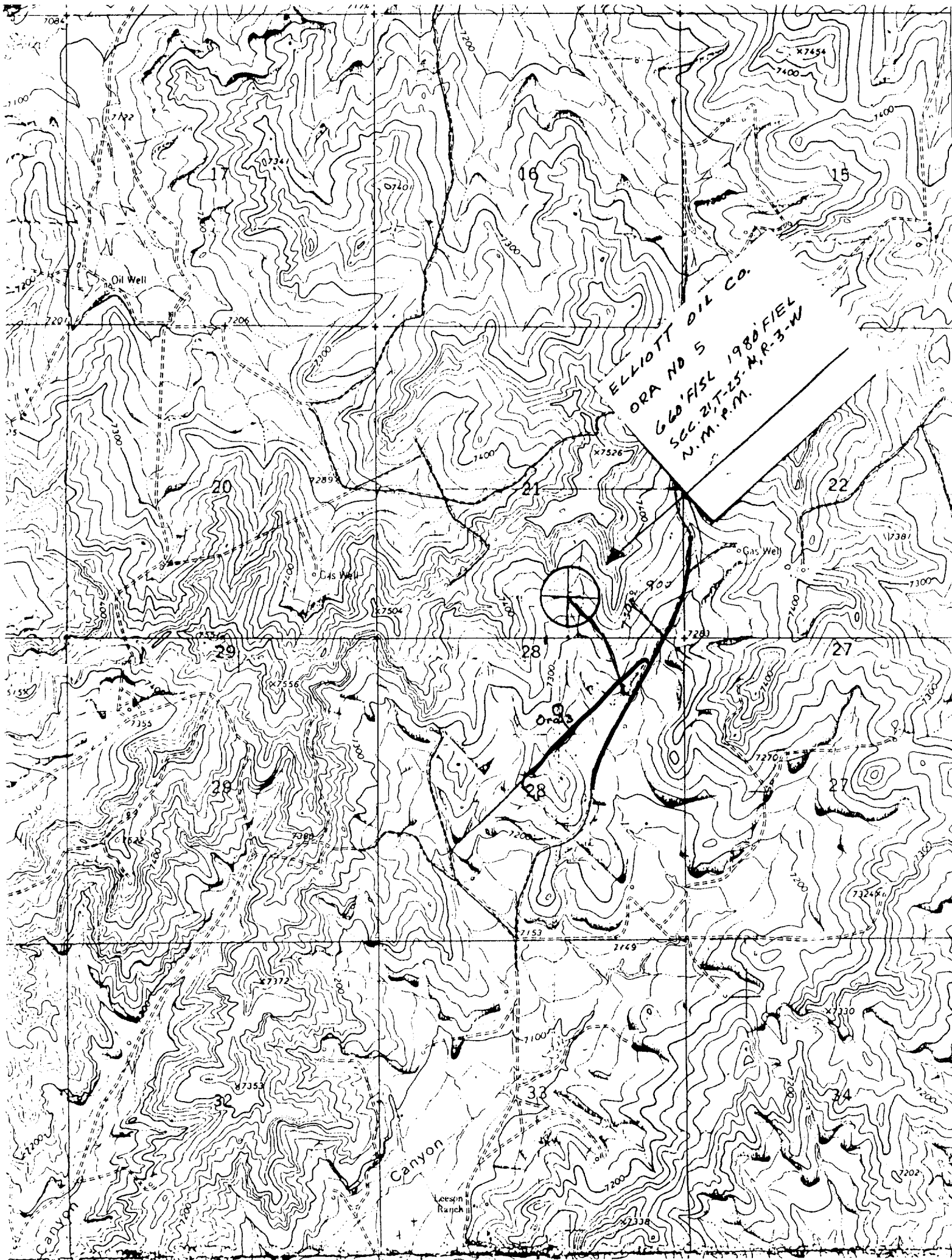
Date
3-21-1988

I hereby certify that the location shown on this plat was plotted on field notes of actual survey made by me or under my supervision, and that the same is true and correct to the best of my knowledge.

Date Surveyed
February 23, 1988

Registered Professional Engineer
and/or Land Surveyor

Edgar L. Risenhoover
Certificate No. 5979
Edgar L. Risenhoover, L.S.



ELLIOTT OIL CO.
ORA NO 5
660' FSL 1980' FIEL
SEC. 21 T. 25. N. R. 3. W.
N.M.P.M.



Canyon

Leeson Ranch

