

UNITED STATES  
DEPARTMENT OF THE INTERIOR  
BUREAU OF LAND MANAGEMENT

5. LEASE DESIGNATION AND SERIAL NO.  
NM-02555

6. IF INDIAN, ALLOTTEE OR TRIBE NAME  
N/A

7. UNIT AGREEMENT NAME  
N/A

8. FARM OR LEASE NAME  
McCRODEN B

9. WELL NO.  
4

10. FIELD AND POOL OR WILDCAT  
West Lindrith Gal/DK

11. SEC., T., R., M., OR BLK.  
AND SURVEY OR AREA  
Section 4, T25N-R3W

12. COUNTY OR PARISH  
Rio Arriba

13. STATE  
NM

APPLICATION FOR PERMIT TO DRILL, DEEPEN, OR PLUG BACK

1a. TYPE OF WORK  
DRILL ☒ DEEPEN ☐ PLUG BACK ☐

b. TYPE OF WELL  
OIL WELL ☐ GAS WELL ☒ OTHER ☐

2. NAME OF OPERATOR  
Union Texas Petroleum

3. ADDRESS OF OPERATOR  
375 U.S. Highway 64, Farmington, NM 87401

4. LOCATION OF WELL (Report location clearly and in accordance with any State requirements.)  
At surface  
1640' FSL & 1848' FWL  
At proposed prod. zone

14. DISTANCE IN MILES AND DIRECTION FROM NEAREST TOWN OR POST OFFICE\*  
3 miles W-SW of Ojito, New Mexico

16. DISTANCE FROM PROPOSED\* LOCATION TO NEAREST PROPERTY OR LEASE LINE, FT.  
(Also to nearest drig. unit line, if any)  
321 from lease  
790 from DU

16. NO. OF ACRES IN LEASE  
120

17. NO. OF ACRES ASSIGNED TO THIS WELL  
SW/4 160  
159.78 acres

18. DISTANCE FROM PROPOSED LOCATION\* TO NEAREST WELL, DRILLING, COMPLETED, OR APPLIED FOR, ON THIS LEASE, FT.  
1951

19. PROPOSED DEPTH  
8275

20. ROTARY OR CABLE TOOL  
Rotary

21. ELEVATIONS (Show whether DF, RT, GR, etc.)  
7219 G.L.

22. APPROX. DATE WORK WILL START\*  
July 10, 1988

23. PROPOSED CASING AND CEMENTING PROGRAM  
This action is subject to technical and procedural review pursuant to 43 CFR 3165.3 and appeal pursuant to 43 CFR 3165.4.

SIZE OF HOLE	SIZE OF CASING	WEIGHT PER FOOT	SETTING DEPTH	
12-1/4	9-5/8"	32.3	510	255 sx (301 cu.ft.)
8-3/4	7"	23.0	3900	415 sx (1014 cu.ft.)
6-1/4	4-1/2" liner	11.6	3700-8275	590 sx (926 cu.ft.)

Union Texas Petroleum wishes to advise we intend to drill a 12-1/4" hole with mud to 510' and set 9-5/8", 32.3#, H-40, ST&C csg to 510', cementing to surface with 255 sx (301 cu.ft.) Cl "B" w/2% CaCl2 and 1/4# flocele/sk. Wait on cement 12 hours.

Nipple up, test BOP. Drill 8-3/4" hole with mud out of surface to 3900'. Set 7", 23.0#, N-80, IT&C intermediate csg to 3900', cementing to surface with 310 sx (890 cu.ft.) 65/35 POZ with 12% gel and 12-1/4# gilsonite/sk, tailed by 105 sx (124 cu.ft.) Cl "B" with 2% CaCl2. Drill 6-1/4" hole with air/mist out of intermediate to a TD of 8275'. Log well, run 4-1/2", 11.6#, N-80, IT&C liner from 3700' to 8275'. Cement liner into intermediate csg with 590 sx (926 cu.ft.) 50/50 POZ with 4% gel, 6-1/4# gilsonite/sk, and 10# salt/sk.

Following perforation and treatment of the Gallup-Dakota formation, standard production equipment will be installed. This well will be equipped with cathodic protection. AC for cable will be buried from the McCroden B 3.

IN ABOVE SPACE DESCRIBE PROPOSED PROGRAM: If proposal is to deepen or plug back, give data on present productive zone and proposed new productive zone. If proposal is to drill or deepen directionally, give pertinent data on subsurface locations and measured and true vertical depths. Give blowout preventer program, if any.

24. SIGNED Robert C. Frank TITLE Permit Coordinator DATE 5/19/88

(This space for Federal or State office use)

PERMIT NO. \_\_\_\_\_ APPROVAL \_\_\_\_\_

APPROVED BY \_\_\_\_\_ TITLE \_\_\_\_\_ DATE \_\_\_\_\_

CONDITIONS OF APPROVAL, IF ANY:

Hold C-104 for average Consolidation  
9/86 NMOCC

RECEIVED  
JUL 27 1988

OIL CON. DIV. JUL 27 1988  
DIST 2

\*See Instructions On Reverse Side

All distances must be from the outer boundaries of the Section.

Operator <b>UNION TEXAS PETROLEUM</b>			Lease <b>MC CRODEN "B"</b>		Well No. <b>4</b>
Unit Letter <b>K</b>	Section <b>4</b>	Township <b>25N</b>	Range <b>3W</b>	County <b>Rio Arriba</b>	
Actual Footage Location of Wells					
1640 feet from the <b>South</b> line and		1848 feet from the <b>West</b> line			
Ground Level Elev. <b>7219</b>	Producing Formation <b>Gallup-Dakota</b>	Pool <b>West Lindrith</b>		Dedicated Acreage <b>160</b> <b>SW/4 159.78</b> Acres	

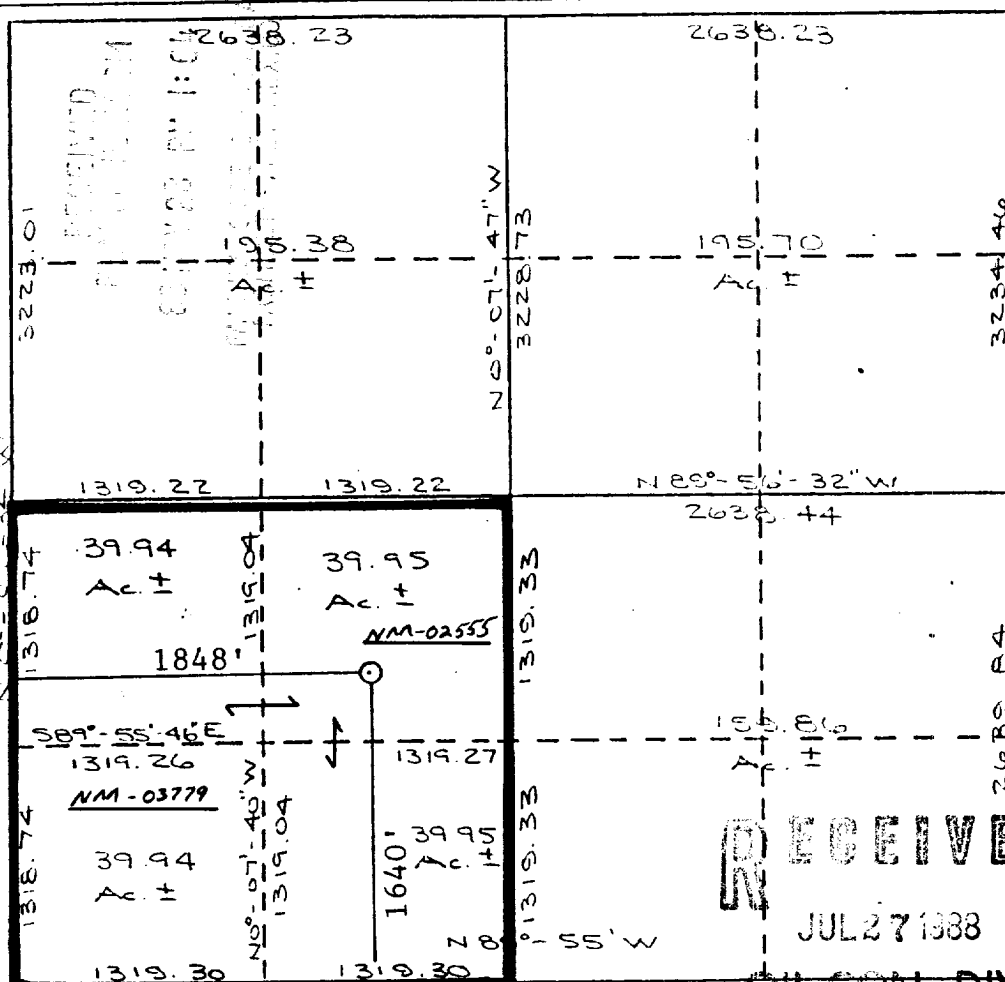
1. Outline the acreage dedicated to the subject well by colored pencil or hachure marks on the plat below.
2. If more than one lease is dedicated to the well, outline each and identify the ownership thereof (both as to working interest and royalty).
3. If more than one lease of different ownership is dedicated to the well, have the interests of all owners been consolidated by communitization, unitization, force-pooling, etc?

☒ Yes ☐ No If answer is "yes," type of consolidation To be Communitized

If answer is "no," list the owners and tract descriptions which have actually been consolidated. (Use reverse side of this form if necessary.)

No allowable will be assigned to the well until all interests have been consolidated (by communitization, unitization, forced-pooling, or otherwise) or until a non-standard unit, eliminating such interests, has been approved by the Division.

N 89°-56'E



CERTIFICATION

I hereby certify that the information contained herein is true and complete to the best of my knowledge and belief.

*Robert C. Frank*

Name  
**Robert C. Frank**

Position  
**Permit Coordinator**

Company  
**Union Texas Petroleum**

Date  
**May 18, 1988**

I hereby certify that the well location shown on this plat was plotted from field notes or documents made by me or under my supervision, and that the same is true and correct to the best of my knowledge and belief.

*Cecil B. Tullis*

Date Surveyed

**December 22, 1987**

Registered Land Surveyor

**Cecil B. Tullis**

Certificate No.

**9672**

Exhibit I

