

UNITED STATES
DEPARTMENT OF THE INTERIOR
BUREAU OF LAND MANAGEMENT

COPY
FORM APPROVED
Budget Bureau No. 1094-0135
Expires: March 31, 1993

RECEIVED
BLM

5. LEASE DESIGNATION AND SERIAL NO.
SF 078911

6. IF INDIAN, ALLOTTEE OR TRIBE NAME

98 MAR 25 PM 2:16

070 FARMINGTON, NM

SUNDRY NOTICES AND REPORTS ON WELLS

Do not use this form for proposals to drill or to deepen or reentry to a different reservoir.

Use "APPLICATION FOR PERMIT-" for such proposals

SUBMIT IN TRIPLICATE

7. IF UNIT OR CA, AGREEMENT DESIGNATION

LINDRITH B UNIT

1. TYPE OF WELL

OIL WELL ☐ GAS WELL ☒ OTHER ☐

8. WELL NAME AND NO.

#75

2. NAME OF OPERATOR

CONOCO INC.

9. API WELL NO.

30-039-24352

3. ADDRESS AND TELEPHONE NO.

10 Desta Drive, Ste. 100W Midland, Texas 79705-4500 (915) 686-5424

10. FIELD AND POOL, OR EXPLORATORY AREA

LINDRITH GALLUP-DAKOTA WEST

4. LOCATION OF WELL (Footage, Sec., T., R., M., or Survey Description)

1290' FSL & 2100' FEL, UNIT LETTER 'O' SEC. 35, T-25-N, R-03-W

11. COUNTY OR PARISH, STATE

RIO ARRIBA, NM

12. CHECK APPROPRIATE BOX(s) TO INDICATE NATURE OF NOTICE, REPORT, OR OTHER DATA

TYPE OF SUBMISSION

- ☒ Notice of Intent
☐ Subsequent Report
☐ Final Abandonment Notice

TYPE OF ACTION

- ☒ Abandonment
☐ Recompletion
☐ Plugging Back
☐ Casing Repair
☐ Altering Casing
☐ Other: _____
- ☐ Change of Plans
☐ New Construction
☐ Non-Routine Fracturing
☐ Water Shut-Off
☐ Conversion to Injection
☐ Dispose Water

(Note: Report results of multiple completion on Well Completion or Recompletion Report and Log Form.)

13. Describe Proposed or Completed Operations (Clearly state all pertinent details, and give pertinent dates, including estimated date of starting any proposed work. If well is directionally drilled, give subsurface locations and measured and true vertical depths for all markers and zones pertinent to this work.)

CONOCO PROPOSES TO PLUG AND ABANDON THIS WELL PER THE ATTACHED PROCEDURE.

RECEIVED
MAY - 1 1998
OIL CON. DIV.
DIST. 2

RECEIVED
BLM
98 MAR 27 AM 10:44
DJO ALBUQUERQUE, N.M.

14. I hereby certify that the foregoing is true and correct

SIGNED

Sylvia Johnson

TITLE SYLVIA JOHNSON, As Agent for Conoco Inc.

DATE 03/25/98

(This space for Federal or State office use)

APPROVED BY

Paul R. Selt

Lands and Mineral Resources

TITLE

DATE

APR 29 1998

Conditions of approval, if any:

Surface restoration requirements in attached letter. Flowline abandon as per NMD Rule 716

Title 18 U.S.C. Section 1001, makes it a crime for any person knowingly and willfully to make to any department or agency of the United States any false, fictitious or fraudulent statements or representations as to any matter within its jurisdiction.

PLUG AND ABANDONMENT PROCEDURE

3-21-98

Lindrith B Unit #75

Lindrith Gallup / Dakota West
1290' FSL & 2100' FEL / SE, Sec. 35, T25N, R3W
Rio Arriba County, New Mexico

Note: All cement volumes use 100% excess outside pipe and 50' excess inside pipe. The stabilizing wellbore fluid will be 8.3 ppg, sufficient to balance all exposed formation pressures.

1. Install and test rig anchors. Prepare blow pit. Comply with all NMOCD, BLM and Conoco safety rules and regulations. MOL and RU daylight pulling unit. Conduct safety meeting for all personnel on location. Blow well down; kill with water as necessary. ND wellhead and NU BOP and stripping head; test BOP.
2. Tally 2-3/8" tubing workstring. Round-trip 5-1/2" casing scraper or gauge ring to 7807' or as deep as possible.
3. **Plug #1 (Dakota perforations and top, 7807' – 7699')**: RIH with 5-1/2" wireline CIBP and set at 7807'. PU and TIH with open ended tubing and tag CIBP. Load casing with water and pressure test to 500#. If casing does not test, spot or tag subsequent plug as appropriate. Spot 17 sxs Class B cement inside casing above CIBP to isolate Dakota perforations and cover top. TOH to 6789.
4. **Plug #2 (Gallup top, 6789' - 6689')**: Mix 17 sxs Class B cement and spot balanced plug inside casing to cover Gallup top. TOH with tubing.
5. **Plug #3 (Mesaverde top, 5156' - 5056')**: Perforate 3 HSC squeeze holes at 5156'. Establish rate into squeeze holes if casing tested. PU 5-1/2" cement retainer and TIH; set at 5106'. Establish rate into squeeze holes. Mix 47 sxs Class B cement, squeeze 30 sxs cement outside casing and leave 17 sxs inside to cover MV top. TOH with tubing.
6. **Plug #4 (Pictured Cliffs, Fruitland, Kirtland and Ojo Alamo tops, 3428' - 2762')** Perforate 3 HSC squeeze holes at 3428'. Establish rate into squeeze holes if casing tested. Set 5-1/2" CR at 3378' and establish rate into squeeze holes. Mix 110 sxs Class B cement, squeeze 30 sxs cement outside 5-1/2" casing from 3428' to 3328' to cover PC and leave 80 sxs cement inside casing to Fruitland/Kirtland and Ojo Alamo tops. POH.
7. **Plug #5 (9-5/8" Surface Casing at 422')**: Attempt to pump into bradenhead valve. If bradenhead annulus hold 500# pressure then do not perforate; set inside plug 472' to 372' with 17 sxs cement. Then perforate 2 holes 50' and circulate cement to surface. If able to pump into bradenhead, then perforate 3 squeeze holes at 472'. Establish circulation out bradenhead valve. Mix and pump approximately 160 sxs Class B cement down 5-1/2" casing, circulate good cement to surface. Shut in well and WOC.
8. ND BOP and cut off well head below surface casing flange. Install P&A marker with cement to comply with regulations. RD, MOL and cut off anchors. Restore location per BLM stipulations.

Lindrith B Unit #75

Current

Lindrith Gallup / Dakota West

SE, Section 35, T-25-N, R-3-W, Rio Arriba County, NM

Today's Date: 3/21/98

Spud: 2/25/89

Completed: 5/2/89

Elev: 7075' GL

7087' KB

Logs: Sonic, DIL, CDL, BT

Workover: April '91 & Nov '96

12-1/4" Hole

9-5/8" 36# K-55 Csg set @ 422'
351 cf cement (Circulated to Surface)

Top of Cmt at Surface by Calc, 75%;
Reported no cement to surface.

Workover History

April '91: Pull rods and pump; acidize DK
perforations; re-run rods and pump

Nov '96: LD rods and pump, hot oil tubing;
set RBP and pressure test casing to 500#;
TOH and LD tubing.

Ojo Alamo @ 2812'

Kirtland / Fruitland @ 3175'

Pictured Cliffs 3378'

DV tool @ 3295'
Cmt w/ 510 sxs (761 cf)

NO TUBING IN WELL

Mesaverde @ 5106'

Top of Cmt @ 5781' (Calc, 75%)

Gallup @ 6739'

Dakota @ 7799'

Dakota Perforations:
7857' - 7882'

PBTD 7990'

7-7/8" Hole

TD 8031'

5-1/2" 17#, K-55 Casing Set @ 8031'
Cemented with 330 sxs (519
cf)

Lindrith B Unit #75

Proposed P&A

Lindrith Gallup / Dakota West

SE, Section 35, T-25-N, R-3-W, Rio Arriba County, NM

Today's Date: 3/21/98

Spud: 2/25/89

Completed: 5/2/89

Elev: 7075' GL
7087' KB

Logs: Sonic, DIL, CDL, BT

Workover: April '91 & Nov '96

Ojo Alamo @ 2812'

Kirtland / Fruitland @ 3175'

Pictured Cliffs 3378'

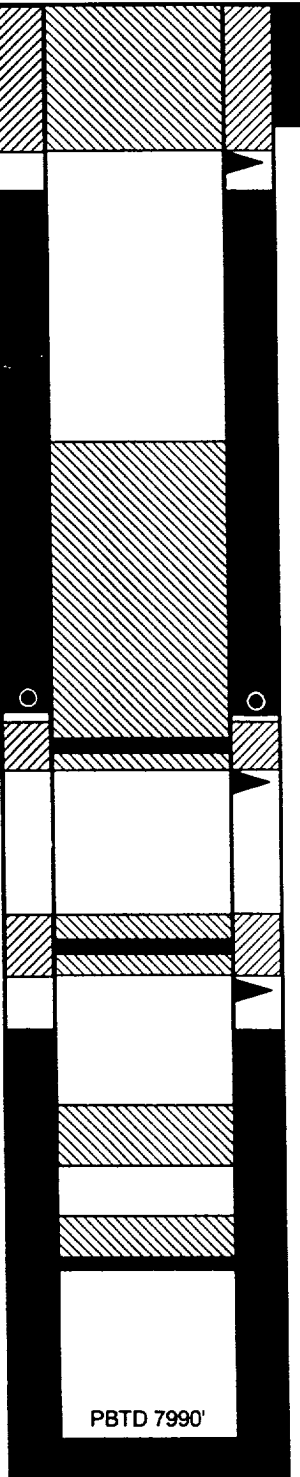
Mesaverde @ 5106'

Gallup @ 6739'

Dakota @ 7799'

12-1/4" Hole

7-7/8" Hole



PBTD 7990'

TD 8031'

9-5/8" 36# K-55 Csg set @ 422'
351 cf cement (Circulated to Surface)

Perforate @ 472'

Top of Cmt at Surface by Calc, 75%;
Reported no cement to surface.

Plug #5 472' - Surface
Cmt with 160 sxs Class B

Plug #4 3428' - 2762'
Cmt with 110 sxs Class B,
30 sxs outside casing from
3428' - 3328' and leave
80 sxs inside to 2762'.

DV tool @ 3295'
Cmt w/ 510 sxs (761 cf)

Cmt Retainer @ 3378'

Perforate @ 3428'

Plug #3 5156' - 5056'
Cmt with 47 sxs Class B,
30 sxs outside casing
and 17 sxs inside.

Cmt Retainer @ 5106'

Perforate @ 5156'

Top of Cmt @ 5781' (Calc, 75%)

Plug #2 6789' - 6689'
Cmt with 17 sxs Class B

Set CIBP @ 7807'

Plug #1 7807' - 7699'
Cmt with 17 sxs Class B

Dakota Perforations:
7857' - 7882'

5-1/2" 17# K-55 Casing Set @ 8031'
Cemented with 330 sxs (519
cf)

CONDITIONS OF APPROVAL FOR PERMANENT ABANDONMENT

Operator Conoco Inc. Well Name #75 Lindrith B Unit

1. Plugging operations authorized are subject to the "General Requirements for Permanent Abandonment of Wells on Federal Leases."
2. For wells on Federal leases, Al Yepa with the Cuba Field Office is to be notified at least 24 hours (48 hours if possible) before the plugging operations commence. His phone number is (505) 289-3748. Office hours are 7:45 a.m. to 4:30 p.m.

For wells on Jicarilla leases notify Erwin Elote with the Jicarilla Apache Tribe at least 24 hours (48 hours if possible) before the plugging operations commence. His phone number is (505) 759-3242.

3. Blowout prevention equipment is required.
4. The following modifications to your plugging program are to be made :

The Nacimiento Formation needs to have a cement plug. Nacimiento top is at 1500 feet, TOC (from Sundry Notice 5/5/89) is at 2720 feet. Procedures and cement volumes used for Plug #3 will be used for this plug.



United States Department of the Interior
BUREAU OF LAND MANAGEMENT
Albuquerque Field Office
435 Montano Rd. NE
Albuquerque, New Mexico 87107-4935

IN REPLY REFER TO:

NMSF 078911
Lindrith B #75
3162.3-4 (010)

APR 29 1998

Conoco, Inc.
10 Desta Drive, Suite 100 W.
Midland, TX 79705-4500

Dear Sir/Madam:

The following conditions of approval must be complied with (as applicable) before the Lindrith B #75 located 1290' FEL and 2100' FEL, Section 35, T 25 N., R. 3 W., can be approved for final abandonment.

1. All fences, production equipment, purchaser's equipment, concrete slabs, deadman (anchors), flowlines, risers, debris and trash must be removed from the location.
2. Any oily soil or fluids must be properly disposed of in an approved disposal area.
3. Pits must be filled in and the edges of the pads shaped to conform to the natural terrain.
4. Pads must be leveled, dressed up by a maintainer, ripped and disked.
5. Access roads must be leveled, waterbarred, disked and blocked off with earthen berms at the junction with the main road and at the entrance to the well pad. Waterbars should be spaced as shown below.

<u>% Slope</u>	<u>Spacing Interval</u>
Less than 2%	200'
2 to 5%	150'
6 to 9%	100'
10 to 15%	50'
Greater than 15%	30'

All waterbars should divert water to the downhill side of the road onto undisturbed ground.

Contact the landowners regarding closure of access roads. Our records indicated that there were three landowners involved in the permitting of the well location and access road.

6. All disturbed areas will be seeded or surface restored per the landowner surface agreement. A suggested seed mix for the area is:

Seed Mix No. 1--BLM

Crested Wheatgrass	2
Smooth Brome	1
Fourwing Saltbush (dewinged)	1
Nomad Alfalfa	2
Indian Ricegrass	1
Western Wheatgrass	2

Species to be planted in pounds pure-live-seed per acre (pure-live-seed = germination x purity). To prevent the introduction of noxious weeds, use certified weed free seed mix.

Since the well is located on private surface, a landowner concurrence letter regarding site restoration should be sent to us.

After one growing season, notify us by Sundry Notice of Final Abandonment. We will schedule an inspection to check the well site and surface restoration. If you have any questions, please contact me at (505) 761-8786.

Sincerely,



Patricia M. Hester
Surface Protection/Geologist

1 Enclosure
1 - Sundry Notice