

UNITED STATES
DEPARTMENT OF THE INTERIOR
GEOLOGICAL SURVEY

APPLICATION FOR PERMIT TO DRILL, DEEPEN, OR PLUG BACK

30-039-24598

5. LEASE DESIGNATION AND SERIAL NO.

SF-078534

6. IF INDIAN, ALLOTTEE OR TRIBE NAME

7. UNIT AGREEMENT NAME

8. FARM OR LEASE NAME

Bobby B

9. WELL NO.

4

10. FIELD AND POOL, OR WILDCAT
Escrito Gallup Assoc. EXT11. SEC., T., R., M., OR BLK.
AND SURVEY OR AREA

Sec. 31, T24N, R6W, NMPM

12. COUNTY OR PARISH

Rio Arriba

13. STATE

NM

1a. TYPE OF WORK

DRILL ☒DEEPEN ☐PLUG BACK ☐

b. TYPE OF WELL

OIL
WELL ☒GAS
WELL ☐

OTHER

SINGLE
ZONE ☒MULTIPLE
ZONE ☐

2. NAME OF OPERATOR

BCO, Inc.

3. ADDRESS OF OPERATOR

135 Grant Ave., Santa Fe, NM 87501

4. LOCATION OF WELL (Report location clearly and in accordance with any State requirements.)*

At surface

880' FNL & 1850' FWL
At proposed prod. zone

14. DISTANCE IN MILES AND DIRECTION FROM NEAREST TOWN OR POST OFFICE*

approx. 6 1/4 miles NE of Lybrook, NM

15. DISTANCE FROM PROPOSED*

LOCATION TO NEAREST
PROPERTY OR LEASE LINE, FT.
(Also to nearest drlg. unit line, if any)

880'

16. NO. OF ACRES IN LEASE

320

17. NO. OF ACRES ASSIGNED
TO THIS WELL

80

18. DISTANCE FROM PROPOSED LOCATION*
TO NEAREST WELL, DRILLING, COMPLETED,
OR APPLIED FOR, ON THIS LEASE, FT.

approx. 1374'

19. PROPOSED DEPTH

5558'

20. ROTARY OR CABLE TOOLS

Rotary

21. ELEVATIONS (Show whether DF, RT, GR, etc.) Bobby B #3

6697' GL

ALL RIGHTS RESERVED ARE
SUBJECT TO COMPLETION OF VITAL ATTACHED

22. APPROX. DATE WORK WILL START*

ASAP

23.

PROPOSED CASING AND CEMENTING PROGRAM

This action is subject to technical and
procedural review pursuant to 43 CFR 160.4.
and appeal pursuant to 43 CFR 160.4.

SIZE OF HOLE	SIZE OF CASING	WEIGHT PER FOOT	SETTING DEPTH	
12-1/4"	8-5/8"	23# 24#	200'	150 sx (190 cu.ft.)
7-7/8"	4-1/2"	11.6#	5558'	1220 sx (2111 cu.ft.)

Plan to drill a 12-1/4" hole and set ±200' of 8-5/8" OD, 23#, limited service, range 3 surface casing; then plan to drill a 7-7/8" hole to total depth with gel-water-mud program to test the Gallup formation. Plan to run IES and CDL logs. If determined productive, will run 4-1/2", 11.6#, J-55 casing, selectively perforate, frac, clean out after frac and complete well.

RECEIVED

DEC 18 1989

OIL CON. DIV.
DIST. 3

"Approval of this action does
not warrant that the applicant
holds legal or equitable title
or title to this lease."

IN ABOVE SPACE DESCRIBE PROPOSED PROGRAM: If proposal is to deepen or plug back, give data on present productive zone and proposed new productive zone. If proposal is to drill or deepen directionally, give pertinent data on subsurface locations and measured and true vertical depths. Give blowout preventer program, if any.

24.

SIGNED

Elizabeth B. Keeshan

TITLE

Vice-President

DATE

11/20/89

(This space for Federal or State office use)

PERMIT NO.

APPROVAL DATE

APPROVED BY

TITLE

CONDITIONS OF APPROVAL, IF ANY:

APPROVED
AS AMENDED

DEC 17 1989

FOR AREA MANAGER

*See Instructions On Reverse Side

NMOON

Submit to Appropriate
District Office
State Lease - 4 copies
Fee Lease - 3 copies

State of New Mexico
Energy, Minerals and Natural Resources Department

Form C-102
Revised 1-1-89

OIL CONSERVATION DIVISION

P.O. Box 2088
Santa Fe, New Mexico 87504-2088

DISTRICT I
P.O. Box 1980, Hobbs, NM 88240

DISTRICT II
P.O. Drawer DD, Artesia, NM 88210

DISTRICT III
1000 Rio Brazos Rd., Aztec, NM 87410

WELL LOCATION AND ACREAGE DEDICATION PLAT

All Distances must be from the outer boundaries of the section

Operator BCO, Inc.		Lease Bobby B		Well No. #4
Unit Letter C	Section 31	Township 24 NORTH	Range 6 WEST NMPM	County RIO ARriba
Actual Footage Location of Well: 880 feet from the NORTH line and 1850 feet from the WEST line				
Ground level Elev. 6697	Producing Formation Gallup	Pool Escrito Gallup Associated	Dedicated Acreage: 80 Acres	

- Outline the acreage dedicated to the subject well by colored pencil or hatchure marks on the plat below.
- If more than one lease is dedicated to the well, outline each and identify the ownership thereof (both as to working interest and royalty).
- If more than one lease of different ownership is dedicated to the well, have the interest of all owners been consolidated by communitization, unitization, force-pooling, etc?
☐ Yes ☐ No If answer is "yes" type of consolidation _____
If answer is "no" list the owners and tract descriptions which have actually been consolidated. (Use reverse side of this form if necessary.) _____
No allowable will be assigned to the well until all interests have been consolidated (by communitization, unitization, forced-pooling, or otherwise) or until a non-standard unit, eliminating such interest, has been approved by the Division.

OPERATOR CERTIFICATION

I hereby certify that the information contained herein is true and complete to the best of my knowledge and belief.

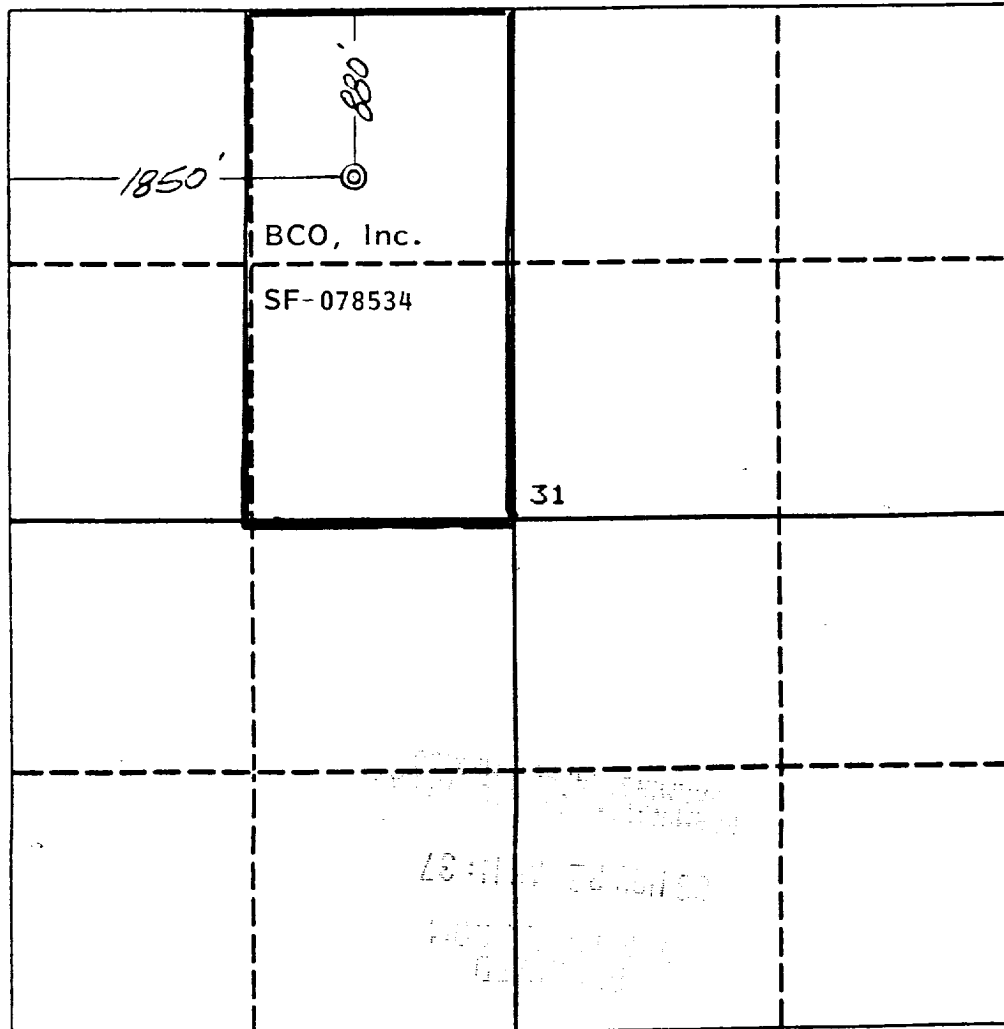
Signature
Elizabeth B. Keeshan
Printed Name
Elizabeth B. Keeshan
Position
Vice-President
Company
BCO, Inc.
Date
11/22/89

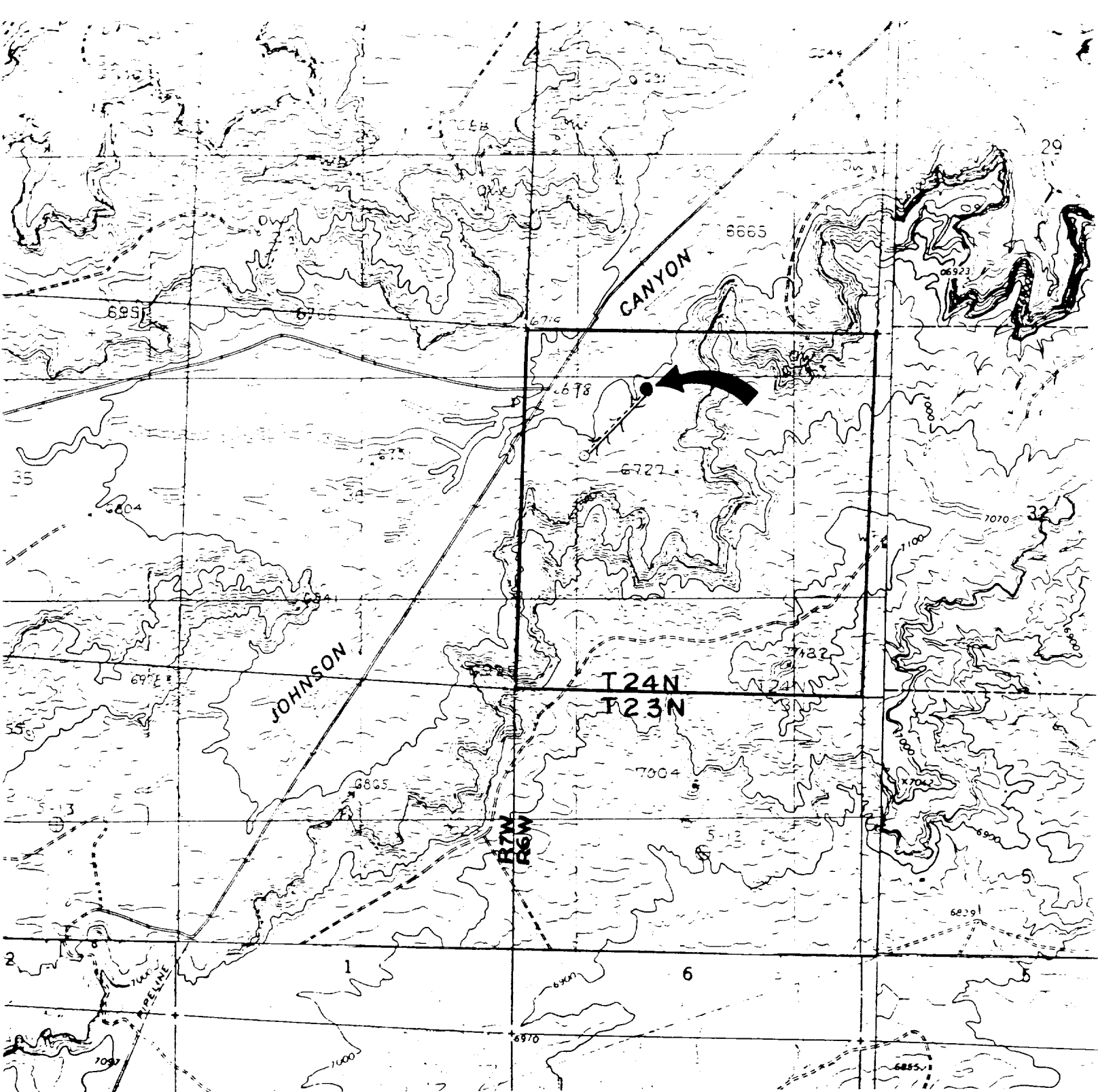
SURVEYOR CERTIFICATION

I hereby certify that the well location shown on this plat was plotted from field notes of actual surveys made by me or under my supervision, and that the same is true and correct to the best of my knowledge and belief.

Date Surveyed
September 12, 1989

Signature & Seal of
Professional Surveyor
GARY D. VANN
7016
GARY
7016
REGISTERED PROFESSIONAL LAND SURVEYOR





BCO, Inc. - Bobby B #4

Existing Roads

Exhibit E

Vicinity of nearest town or reference pt.
approx. 6-1/4 miles NE of Lybrook, NM

Type of surface dirt

Conditions good

Other _____

Reference map: USGS map Crow Mesa
East, NM, 1985, 7.5 minute series

Planned Access Road(s)

Exhibit E

Width 20' Maximum grades 1%

Drainage design as required

Cuts & Fills as required

Surfacing material _____

Turnouts

Culverts

Gates

Cattleguards

Fence cuts

Waterbars

--- new road and
surface fluids
line

Access road(s) (do/do not cross Fed/Ind land.