

UNITED STATES
DEPARTMENT OF THE INTERIOR
BUREAU OF LAND MANAGEMENT

APPLICATION FOR PERMIT TO DRILL, DEEPEN, OR PLUG BACK

1a. TYPE OF WORK

DRILL ☒

DEEPEN ☐

PLUG BACK ☐

b. TYPE OF WELL

OIL
WELL ☒

GAS
WELL ☐

OTHER

SINGLE
ZONE ☒

MULTIPLE
ZONE ☐

2. NAME OF OPERATOR

Hixon Development Company

3. ADDRESS OF OPERATOR

P. O. Box 2810 Farmington, New Mexico 87499

4. LOCATION OF WELL (Report location clearly and in accordance with any State requirements.*)

At surface

2310' FNL, 2310' FEL, Section 35, T25N, R3W

At proposed prod. zone

14. DISTANCE IN MILES AND DIRECTION FROM NEAREST TOWN OR POST OFFICE*

7 miles east of Lindrith, New Mexico

10. DISTANCE FROM PROPOSED*

LOCATION TO NEAREST
PROPERTY OR LEASE LINE, FT.
(Also to nearest drlg. unit line, if any)

330'

18. DISTANCE FROM PROPOSED LOCATION*

TO NEAREST WELL, DRILLING, COMPLETED,
OR APPLIED FOR, ON THIS LEASE, FT.

2100'

16. NO. OF ACRES IN LEASE

640.00

19. PROPOSED DEPTH

8120'

17. NO. OF ACRES ASSIGNED
TO THIS WELL

160

20. ROTARY OR CABLE TOOLS

Rotary

21. ELEVATIONS (Show whether DF, RT, GR, etc.)

7130' GLE

DRILLING OPERATIONS AUTHORIZED ARE
SUBJECT TO COMPLIANCE WITH ATTACHED

22. APPROX. DATE WORK WILL START*

September 1, 1989

23. PROPOSED CASING AND CEMENTING PROGRAM

This action is subject to technical and
procedural review pursuant to 43 CFR 3165.3
and appeal pursuant to 43 CFR 3165.4.

SIZE OF HOLE	SIZE OF CASING	WEIGHT PER FOOT	SETTING DEPTH	QUANTITY OF CEMENT
12-3/4"	9-5/8"	36.0#	320'	160 sks. (1.18 cu ft/sk.) to surface
8-3/4"	5-1/2"	17.0#	8120'	1085 sks. to surface
				1st Stage - 100 sks. (3.87 cu ft/sk.)
				560 sks. (1.41 cu ft/sk.)
				2nd Stage - 375 sks. (3.87 cu ft/sk.)
				50 sks. (1.18 cu ft/sk.)

It is proposed to drill the subject West Lindrith Gallup/Dakota pool oil well.
It will be evaluated on the basis of openhole logs. Please see attached Onshore
Oil and Gas Order No. 1 data.

RECEIVED
JAN 2 1990
OIL CON. DIV
DIST 2

IN ABOVE SPACE DESCRIBE PROPOSED PROGRAM: If proposal is to deepen or plug back, give data on present productive zone and proposed new productive zone. If proposal is to drill or deepen directionally, give pertinent data on subsurface locations and measured and true vertical depths. Give blowout preventer program, if any.

24.

SIGNED

John C. Corbett

TITLE Vice President/Exploration

DATE August 1, 1989

(This space for Federal or State office use)

PERMIT NO.

APPROVAL DATE

APPROVED
AS AMENDED

APPROVED BY

TITLE

CONDITIONS OF APPROVAL, IF ANY:

JAN 08 1990
AREA MANAGER

*See Instructions On Reverse Side

Submit to Appropriate
District Office
State Lease - 4 copies
Fee Lease - 3 copies

State of New Mexico
Energy, Minerals and Natural Resources Department

Form C-102
Revised 1-1-89

OIL CONSERVATION DIVISION

P.O. Box 2088

Santa Fe, New Mexico 87504-2088

DISTRICT I

P.O. Box 1980, Hobbs, NM 88240

DISTRICT II

P.O. Drawer DD, Artesia, NM 88210

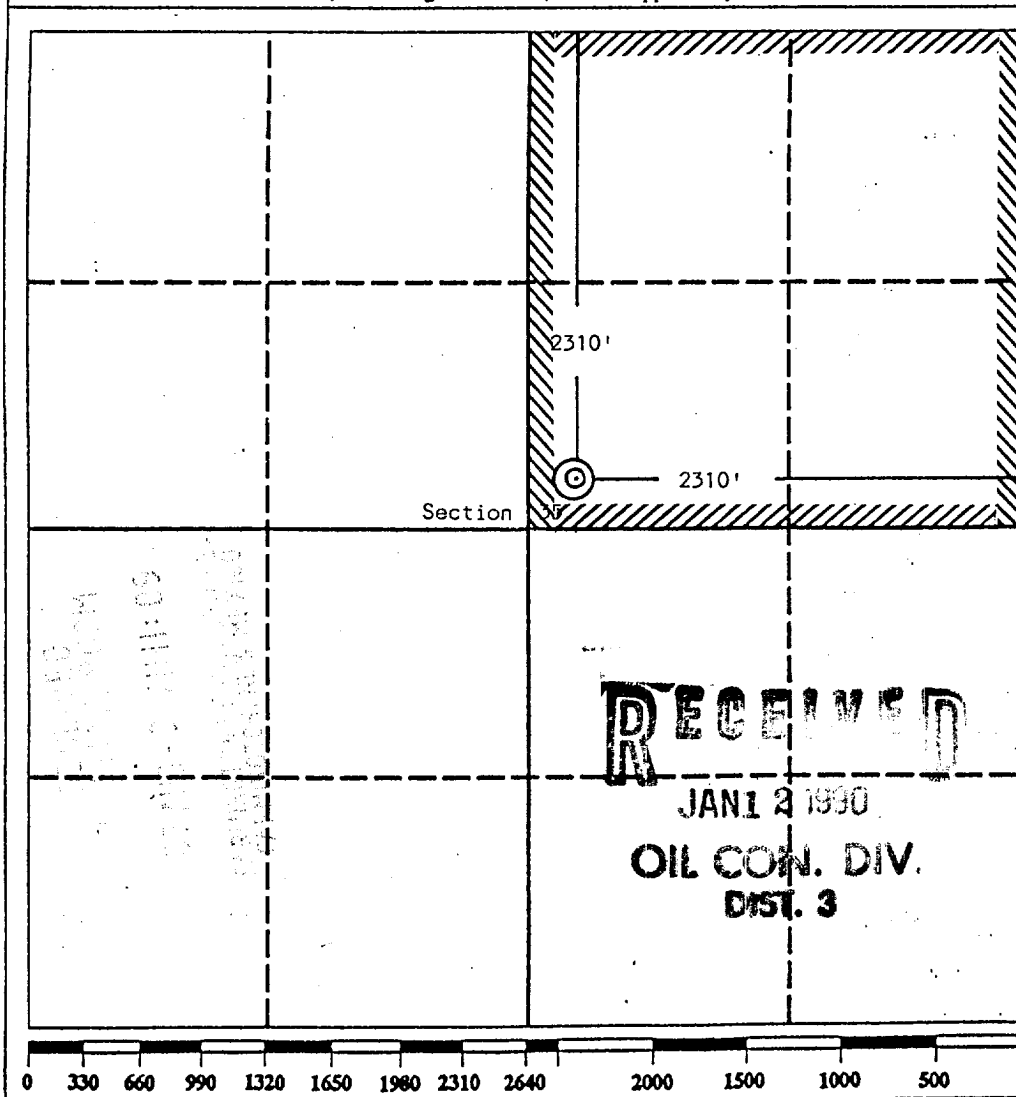
DISTRICT III

1000 Rio Brazos Rd., Aztec, NM 87410

WELL LOCATION AND ACREAGE DEDICATION PLAT

All Distances must be from the outer boundaries of the section

Operator Hixon Development Company			Lease Tesia Kuchera		Well No. 2
Unit Letter G	Section 35	Township 25 North	Range 3 West	County NMPM Rio Arriba	
Actual Footage Location of Well: 2310 feet from the North line and 2310 feet from the East line					
Ground level Elev. 7130	Producing Formation Gallup/Dakota		Pool West Lindriith Gallup/Dakota		Dedicated Acreage: 160 Acres
1. Outline the acreage dedicated to the subject well by colored pencil or hatchure marks on the plat below. JT w/ #1					
2. If more than one lease is dedicated to the well, outline each and identify the ownership thereof (both as to working interest and royalty).					
3. If more than one lease of different ownership is dedicated to the well, have the interest of all owners been consolidated by communitization, unitization, force-pooling, etc.? <input type="checkbox"/> Yes <input type="checkbox"/> No If answer is "yes" type of consolidation _____					
If answer is "no" list the owners and tract descriptions which have actually been consolidated. (Use reverse side of this form if necessary.) _____					
No allowable will be assigned to the well until all interests have been consolidated (by communitization, unitization, forced-pooling, or otherwise) or until a non-standard unit, eliminating such interest, has been approved by the Division.					



OPERATOR CERTIFICATION

I hereby certify that the information contained herein in true and complete to the best of my knowledge and belief.

Signature

John C. Corbett

Printed Name

John C. Corbett

Position

Vice President-Exploration Company

Hixon Development Co.

Date

July 12, 1989

SURVEYOR CERTIFICATION

I hereby certify that the well location shown on this plat was plotted from field notes of actual surveys made by me or under my supervision, and that the same is true and correct to the best of my knowledge and belief.

Date Surveyed

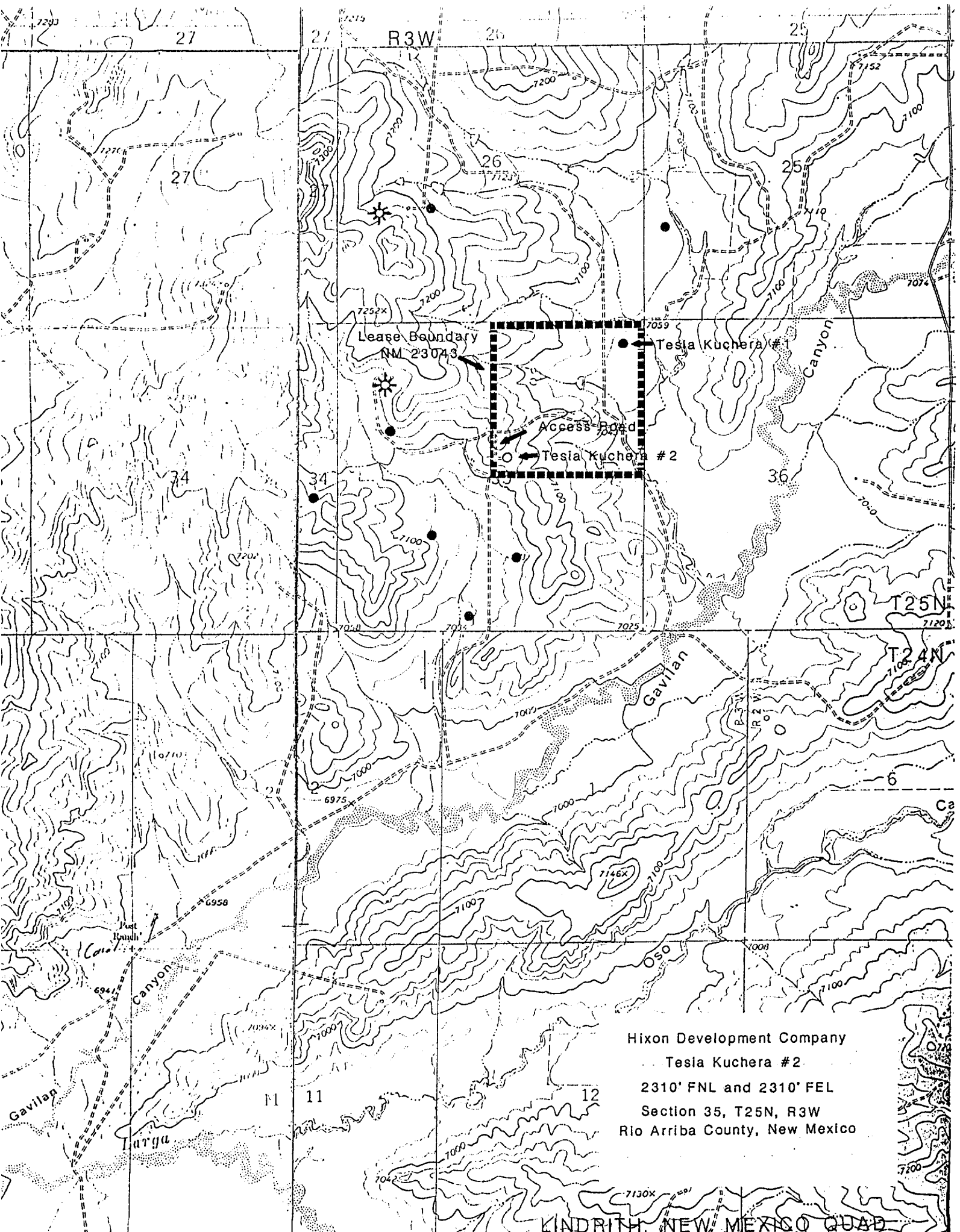
July 7, 1989

Signature and Seal of Professional Surveyor

Edgar J. Risenhoover

5979

Edgar J. Risenhoover, L.S.



Hixon Development Company
Tesla Kuchera #2
2310' FNL and 2310' FEL
Section 35, T25N, R3W
Rio Arriba County, New Mexico

KINDRITH, NEW MEXICO QUAD