

UNITED STATES
DEPARTMENT OF THE INTERIOR
BUREAU OF LAND MANAGEMENT

APPLICATION FOR PERMIT TO DRILL, DEEPEN, OR PLUG BACK

1a. TYPE OF WORK

DRILL ☒

DEEPEN ☐

PLUG BACK ☐

b. TYPE OF WELL

OIL WELL ☒

GAS WELL ☐

OTHER ☐

SINGLE ZONE ☐

MULTIPLE ZONE ☐

2. NAME OF OPERATOR

Bannon Energy, Inc. c/o Holcomb Oil & Gas

3. ADDRESS OF OPERATOR

P.O. Box 2058, Farmington, NM 87499

4. LOCATION OF WELL (Report location clearly and in accordance with any State requirements.)

At surface 1749

Unit H 2065' FNL x 890' FEL

At proposed prod. zone

14. DISTANCE IN MILES AND DIRECTION FROM NEAREST TOWN OR POST OFFICE*

7 1/2 miles NNW from Counselors Trading Post

15. DISTANCE FROM PROPOSED*

LOCATION TO NEAREST
PROPERTY OR LEASE LINE, FT.
(Also to nearest drig. unit line, if any)

18. DISTANCE FROM PROPOSED LOCATION*
TO NEAREST WELL, DRILLING, COMPLETED,
OR APPLIED FOR, ON THIS LEASE, FT.

16. NO. OF ACRES IN LEASE

560 280

19. PROPOSED DEPTH

5800'

17. NO. OF ACRES ASSIGNED
TO THIS WELL

160

20. ROTARY OR CABLE TOOLS

Rotary

21. ELEVATIONS (Show whether DF, RT, GR, etc.)

6622' GL

22. APPROX. DATE WORK WILL START*

June 1, 1990

This section is subject to technical and
procedural review pursuant to 43 CFR 3100.2
and appeal pursuant to 43 CFR 3100.3

PROPOSED CASING AND CEMENTING PROGRAM

SIZE	WEIGHT PER FOOT	SETTING DEPTH
12 1/2"	8 5/8"	24.0 lb. J-55
7 7/8"	4 1/2"	11.6 lb. K-55
		300'
		5800'

DRILLING AND CEMENTING OPERATIONS ARE
SUBJECT TO COMPLIANCE WITH ATTACHED
GENERAL REQUIREMENTS OF CEMENT

Cement to surface
800 sx-volume to be calculated
subsequent to logging & circulate
to surface.

Well to be drilled to penetrate the Gallup formation. All producing intervals
in the Gallup will be stimulated as necessary.

EXHIBITS:

"A" Location & Elevation Plat
"B" Ten Point Compliance Program
"C" Blowout Preventor Diagram
"D" Multi-point requirements of APD
"E" Site specific checklist for roads
(Attachment to "E" - Topo map)

"F" Drill Rig Layout
"G" Completion Program Layout
"H" Location Profile

The gas from this lease is
committed.

IN ABOVE SPACE DESCRIBE PROPOSED PROGRAM: If proposal is to deepen or plug back, give data on present productive zone and proposed new productive zone. If proposal is to drill or deepen directionally, give pertinent data on subsurface locations and measured and true vertical depths. Give blowout preventer program, if any.

24. W. J. Holcomb

SIGNED

Agent, Bannon Energy

DATE 4-24-90

(This space reserved for use by the Bureau of Land Management)

PERMIT NO.

APPROVAL DATE

APPROVED BY

CONDITIONS OF APPROVAL, IF ANY:

TITLE

DATE

AUG 13 1990

OIL CON. DIV.
DIST. 3

NMOCD

APR 23 1990
AREA MANAGER

1913

1913

Submit to Appropriate
District Office
State Lease - 4 copies
Fee Lease - 3 copies

State of New Mexico
Energy, Minerals and Natural Resources Department

Form C-102
Revised 1-1-89

OIL CONSERVATION DIVISION

P.O. Box 2088
Santa Fe, New Mexico 87504-2088

DISTRICT I
P.O. Box 1980, Hobbs, NM 88240

DISTRICT II
P.O. Drawer DD, Artesia, NM 88210

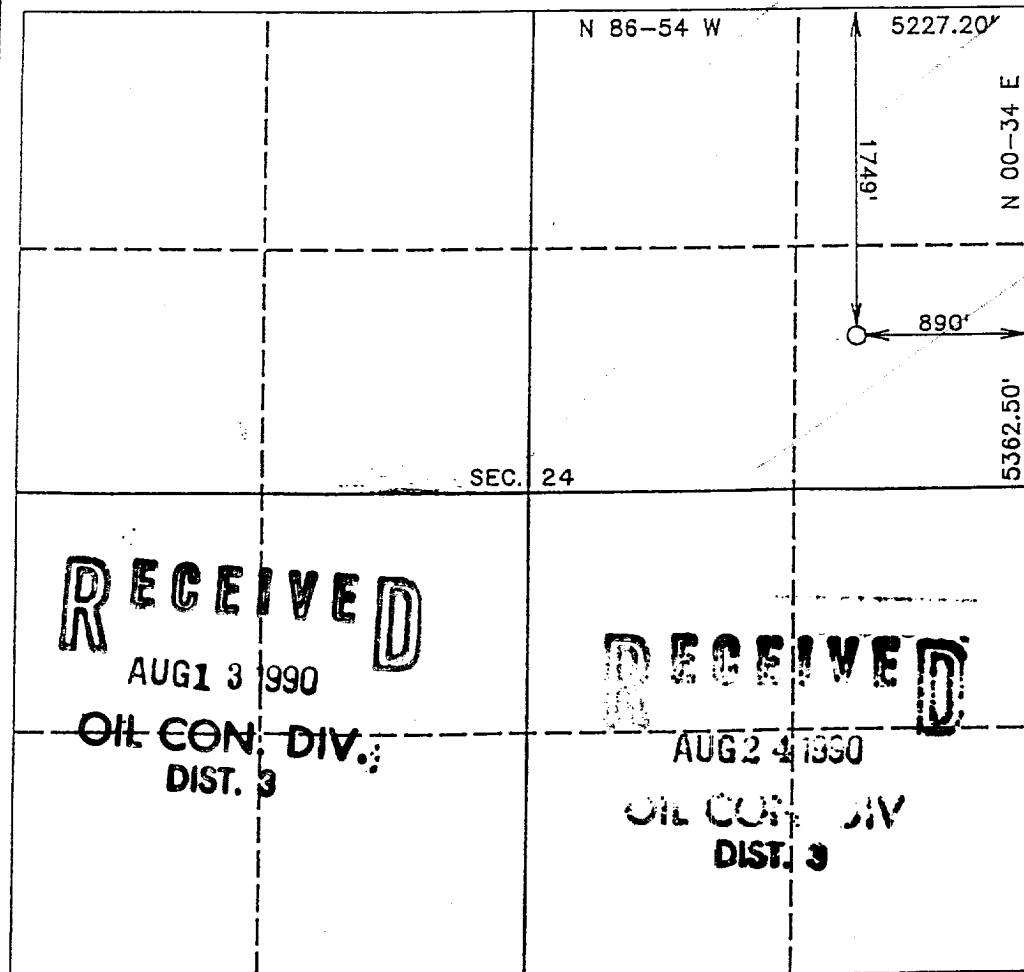
DISTRICT III
1000 Rio Brazos Rd., Aztec, NM 87410

WELL LOCATION AND ACREAGE DEDICATION PLAT

All Distances must be from the outer boundaries of the section

Operator BANNON ENERGY, INC.			Lease LYBROOK FEDERAL		Well No. 24-4
Unit Letter H	Section 24	Township T.24 N.	Range R.7 W.	County RIO ARriba COUNTY	
Actual Footage Location of Well: 1749 feet from the NORTH line and 890 feet from the EAST line					
Ground level Elev. 6622	Producing Formation Gallup		Pool Devils Fork	Dedicated Acreage: 160 Acres	

- Outline the acreage dedicated to the subject well by colored pencil or hatchure marks on the plat below.
- If more than one lease is dedicated to the well, outline each and identify the ownership thereof (both as to working interest and royalty).
- If more than one lease of different ownership is dedicated to the well, have the interest of all owners been consolidated by communitization, unitization, force-pooling, etc.?
☐ Yes ☐ No If answer is "yes" type of consolidation _____
If answer is "no" list the owners and tract descriptions which have actually been consolidated. (Use reverse side of this form if necessary).
No allowable will be assigned to the well until all interests have been consolidated (by communitization, unitization, forced-pooling, or otherwise) or until a non-standard unit, eliminating such interest, has been approved by the Division.



OPERATOR CERTIFICATION

I hereby certify that the information contained herein is true and complete to the best of my knowledge and belief.

Signature *R.A. Chabaud*
Printed Name **R.A. Chabaud**
Position **Vice President**
Company **Bannon Energy Incorporated**
Date **8/21/90**

SURVEYOR CERTIFICATION

I hereby certify that the well location shown on this plat was plotted from field notes of actual surveys made by me or under my supervision, and that the same is true and correct to the best of my knowledge and belief.

Date Surveyed **MAY 31, 1990**
Signature & Seal of Professional Surveyor **R. HOWARD DAGGETT**
Certificate No. **8678**
Registered Professional Land Surveyor

0 330 660 990 1320 1650 1980 2310 2640 2000 1500 1000 500 0

Lybrook Federal 24-4
 2065' FNL x 890' FEL
 Sec. 24 T24N R7W
 Rio Arriba Co., NM

