

UNITED STATES
DEPARTMENT OF THE INTERIOR
GEOLOGICAL SURVEY

APPLICATION FOR PERMIT TO DRILL, DEEPEN, OR PLUG BACK

1a. TYPE OF WORK DRILL <input checked="" type="checkbox"/> DEEPEN <input type="checkbox"/> PLUG BACK <input type="checkbox"/>			3. LEASE DESIGNATION AND SERIAL NO. SF079600	
b. TYPE OF WELL OIL WELL <input type="checkbox"/> GAS WELL <input checked="" type="checkbox"/> OTHER <input type="checkbox"/>			6. IF INDIAN, ALLOTTEE OR TRIBE NAME	
2. NAME OF OPERATOR Texaco			7. UNIT AGREEMENT NAME	
3. ADDRESS OF OPERATOR 3300 North Butler Farmington, NM 87401			8. FARM OR LEASE NAME C.W. Roberts	
4. LOCATION OF WELL (Report location clearly and in accordance with any State requirements.)* At surface 1605'FNL - 2505'FEL At proposed prod. zone Same			9. WELL NO. 9	
14. DISTANCE IN MILES AND DIRECTION FROM NEAREST TOWN OR POST OFFICE* 20 miles NE of Counselor, NM			10. FIELD AND POOL, OR WILDCAT Basin Fruitland Coa	
15. DISTANCE FROM PROPOSED* LOCATION TO NEAREST PROPERTY OR LEASE LINE, FT. (Also to nearest drig. unit line, if any) 1605'			11. SEC., T., R., M., OR BLK. AND SURVEY OR AREA G Sec17, T25N, R3W, NM	
16. NO. OF ACRES IN LEASE 1271.04			12. COUNTY OR PARISH Rio Arriba	
17. NO. OF ACRES ASSIGNED TO THIS WELL N/320			13. STATE NM	
18. DISTANCE FROM PROPOSED LOCATION* TO NEAREST WELL DRILLING COMPLETED, OR APPLIED FOR, ON THIS LEASE, FT. 1200'			20. ROTARY OR CABLE TOOLS Rotary	
21. ELEVATIONS (Show whether DF, RT, GR, etc.) 7243' GL			22. APPROX. DATE WORK WILL START 07/20/90	
23. PROPOSED CASING AND CEMENTING PROGRAM This action is subject to technical and procedural review pursuant to 43 CFR 3185.3 and appeal pursuant to 43 CFR 3185.4.				

SIZE OF HOLE	SIZE OF CASING	WEIGHT PER FOOT	SETTING DEPTH	* GENERAL REQUIREMENTS
17 1/2"	13 3/8"	48#, H-40	40'	59 cuft/circ to surface
12 1/4"	8 5/8"	24#, K-55	520'	696 cuft/ circ to surface
7 7/8"	5 1/2"	15.5#, J-55 *	3775'	Stage1:837 cuft.circ to DV
*DV Tool at 1700'				Stage 2:856 cuft/circ to sur

Propose to spud in San Jose Formation. Will drill a 17 1/2" hole to a TD of 40'. Run and cement conductor pipe with cement returns to surface. WOC 48 hours. Drill a 12 1/4" hole to a TD of 520' using fresh water mud. Run and cement surface pipe with cement returns to surface. WOC 12 hours. Pressure test to 1500 psi/30 mins. Drill a 7 7/8" hole to a TD of 3775' using fresh water mud. No abnormal pressures or poisonous gases are anticipated. Logs will be run at TD. Run and cement production casing in two stages with cement returns to surface. WOC 12 hours. Pressure test to 3000 psi/30 mins prior to completion. The drilling rig will be released and a completion unit moved in. The Fruitland Coals will be perforated and stimulated using either a fresh water based gel or foam fluid.

This APD requests a pipeline ROW.

Surface ownership is Fee - Tony Schmitz

IN ABOVE SPACE DESCRIBE PROPOSED PROGRAM: If proposal is to deepen or plug back, give data on present productive zone and proposed new product zone. If proposal is to drill or deepen directionally, give pertinent data on subsurface locations and measured and true vertical depths. Give blow preventer program, if any.

SIGNED Alan A. Kleier TITLE Area Manager DATE 7-13-90

(This space for Federal or State office use)

PERMIT NO.

APPROVED BY
CONDITIONS OF APPROVAL, IF ANY:

BLM (Farm) STD, JAS, AAR
OK

RECEIVED

OCT 9 1990

OIL CON. DIV.
NMOODIST. 3

*See Instructions On Reverse Side

Submit to Appropriate
District Office
State Leases - 4 copies
Fee Leases - 3 copies

State of New Mexico
Energy, Minerals and Natural Resources Department

Form C-102
Revised 1-1-89

OIL CONSERVATION DIVISION

P.O. Box 2088

Santa Fe, New Mexico 87504-2088

DISTRICT I
P.O. Box 1980, Hobbs, NM 88240

DISTRICT II
P.O. Drawer DD, Artesia, NM 88210

DISTRICT III
1000 Rio Brazos Rd., Aztec, NM 87410

WELL LOCATION AND ACREAGE DEDICATION PLAT

All Distances must be from the outer boundaries of the section

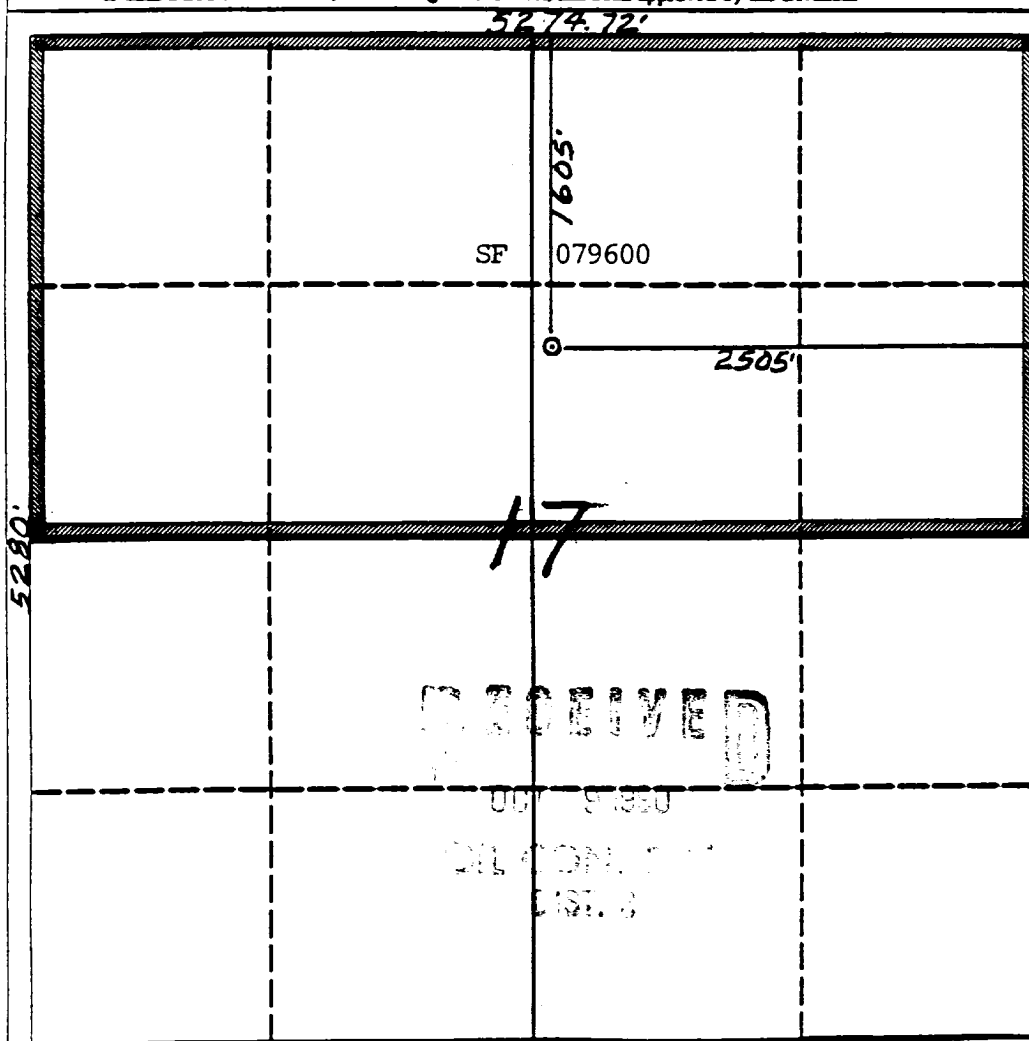
Operator TEXACO			Lease C.W. Roberts		Well No. 9
Unit Letter G	Section 17	Township 25 North	Range 3 West	County NMPM Rio Arriba	
Actual Footage Location of Well: 1605 feet from the North line and 2505 feet from the East line					
Ground level Elev. 7243'	Producing Formation Fruitland Coal		Pool Basin Fruitland Coal		Dedicated Acreage: 320 Acres

1. Outline the acreage dedicated to the subject well by colored pencil or hectare marks on the plat below.
2. If more than one lease is dedicated to the well, outline each and identify the ownership thereof (both as to working interest and royalty).
3. If more than one lease of different ownership is dedicated to the well, have the interest of all owners been consolidated by communitization, unitization, force-pooling, etc.?

☐ Yes ☐ No If answer is "yes" type of consolidation: _____

If answer is "no" list the owners and tract descriptions which have actually been consolidated. (Use reverse side of this form if necessary.) _____

No allowable will be assigned to the well until all interests have been consolidated (by communitization, unitization, force-pooling, or otherwise) or until a non-standard unit, eliminating such interest, has been approved by the Division.



OPERATOR CERTIFICATION

I hereby certify that the information contained herein is true and complete to the best of my knowledge and belief.

Signature: *Alan A. Kleier*
Printed Name: **Alan A. Kleier**
Position: **Area Manager**
Company: **Texaco**
Date: **7-13-90**

SURVEYOR CERTIFICATION

I hereby certify that the well location shown on this plat was plotted from field notes of actual surveys made by me or under my supervision, and that the same is true and correct to the best of my knowledge and belief. **5-17-90**

Date Surveyed: *5-17-90*
Signature: *Neale C. Edwards*
Professional Seal: **NEW MEXICO 6857 REGISTERED LAND SURVEYOR**
Certificate No.: **Neale C. Edwards**

0 300 600 900 1200 1500 1800 2100 2400 2700 3000 3300 3600

