

UNITED STATES
DEPARTMENT OF THE INTERIOR
BUREAU OF LAND MANAGEMENT

APPLICATION FOR PERMIT TO DRILL, DEEPEN, OR PLUG BACK

1a. TYPE OF WORK
DRILL ☒ DEEPEN ☐ PLUG BACK ☐

b. TYPE OF WELL
OIL WELL ☒ GAS WELL ☐ OTHER ☐
SINGLE ZONE ☐ MULTIPLE ZONE ☐

2. NAME OF OPERATOR
MOBIL PRODUCING TEXAS & NEW MEXICO INC.

3. ADDRESS OF OPERATOR
% MOBIL EXPLORATION & PRODUCING US INC.
P.O. BOX 633, MIDLAND, TX 79702

4. LOCATION OF WELL (Report location clearly and in accordance with any State requirements.)
At surface
1120' FSL 790' FWL
At proposed prod. zone
SAME

14. DISTANCE IN MILES AND DIRECTION FROM NEAREST TOWN OR POST OFFICE*
5 MILES NW OF LINDRITH, N.M.

15. DISTANCE FROM PROPOSED*
LOCATION TO NEAREST
PROPERTY OR LEASE LINE, FT.
(Also to nearest drlg. unit line, if any)
2440' FSL

18. DISTANCE FROM PROPOSED LOCATION*
TO NEAREST WELL, DRILLING, COMPLETED,
OR APPLIED FOR, ON THIS LEASE, FT.
4023' NW TO #79

21. ELEVATIONS (Show whether DF, RT, GR, etc.)
7205

23. PROPOSED CASING AND CEMENTING PROGRAM

SIZE OF HOLE	SIZE OF CASING	WEIGHT PER FOOT	SETTING DEPTH
17 1/2	13 3/8	48#	450
11	5 1/2	15.5#	3300
8 3/4	5 1/2	15.5#	8900

16. NO. OF ACRES IN LEASE
2316.51 2370.92

17. NO. OF ACRES ASSIGNED
TO THIS WELL
160

20. ROTARY OR CABLE TOOLS
ROTARY

22. APPROX. DATE WORK WILL START*
MARCH 1, 1992

QUANTITY OF CEMENT
TO SURFACE W/665 CU. FT.
TO 3300' W/2821 CU. FT.
TO SURFACE W/3118 CU. FT.

SEE ATTACHED 8 POINT WELL CONTROL PLAN FOR ADDITIONAL DRILLING INFORMATION.

The plug to abandon portion of the APD is
Not approved.

RECEIVED
JAN 5 1992
OIL CON. DIV.
DIST. 3

IN ABOVE SPACE DESCRIBE PROPOSED PROGRAM: If proposal is to deepen or plug back, give data on present productive zone and proposed new productive zone. If proposal is to drill or deepen directionally, give pertinent data on subsurface locations and measured and true vertical depths. Give blowout preventer program, if any.

24. SIGNED Shirley J. Add TITLE ENV. & REG. TECH DATE 12-17-91

(This space for Federal or State office use)

PERMIT NO. APPROVAL DATE

APPROVED BY CONDITIONS OF APPROVAL, IF ANY: TITLE

APPROVED
AS AMENDED

JAN 14 1992
AREA MANAGER

NMOOD

*See Instructions On Reverse Side

**NEW MEXICO OIL CONSERVATION COMMISSION
WELL LOCATION AND ACREAGE DEDICATION PLAT**

Form C-189
Supersedes C-128
Effective 1-4-83

All distances must be from the outer boundaries of the Section.

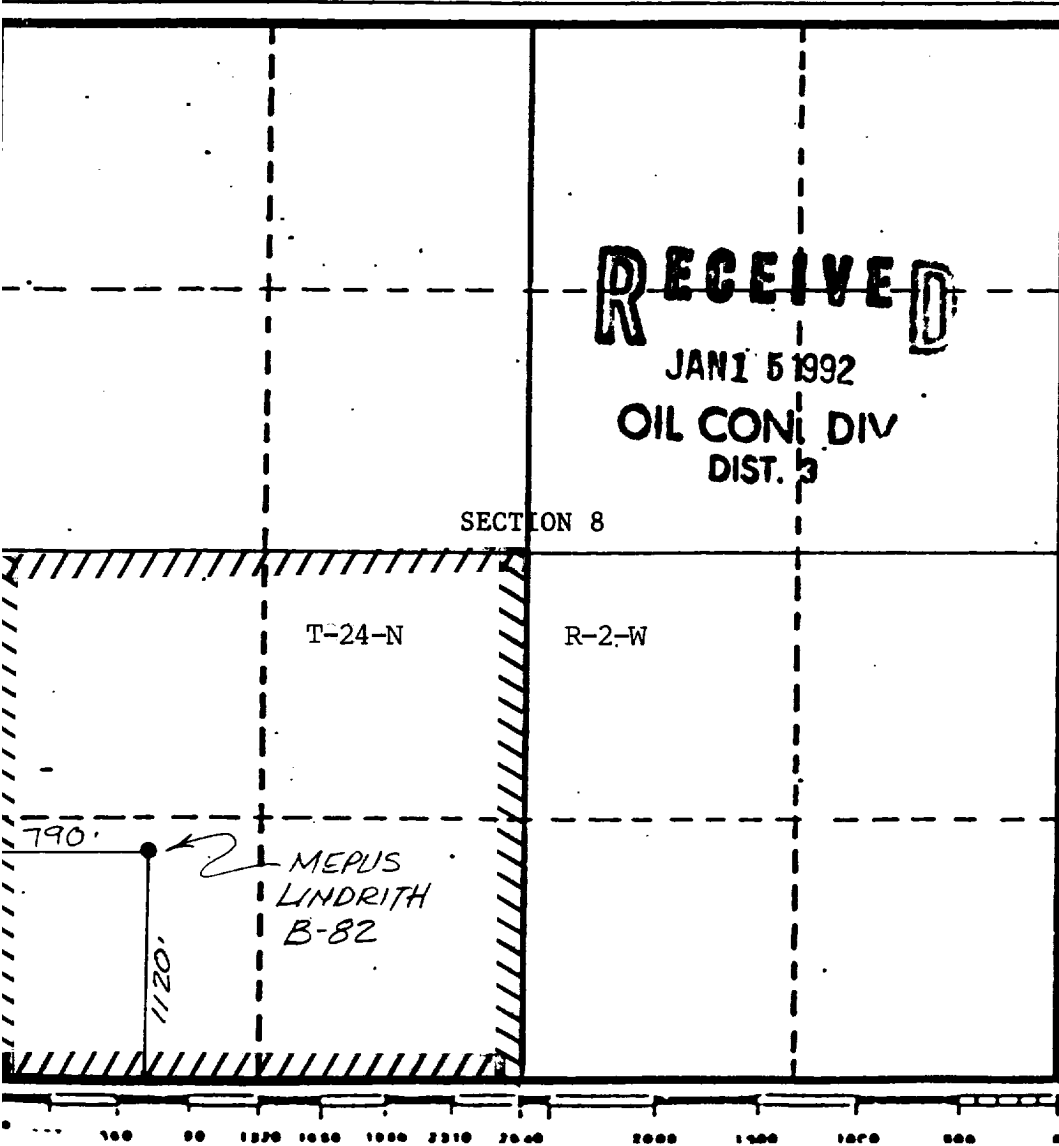
Operator MOBIL EXPLORATION & PRODUCING, UNITED STATES			Lease LINDRITH		Well No. B-82
Unit Letter M	Section 8	Township 24 NORTH	Range 2 WEST	County RIO ARriba	

Actual Footage Location of Well:
 1120 feet from the **SOUTH** line and 790 feet from the **WEST** line
 Ground Level Elev. **7209**
 7204.8
 Producing Formation: **Dakota**
 Pool: **W. Lindrith Gallup/Dakota EXT**
 Dedicated Acreage: **160** Acres

- Outline the acreage dedicated to the subject well by colored pencil or hatchure marks on the plat below.
- If more than one lease is dedicated to the well, outline each and identify the ownership thereof (both as to working interest and royalty).
- If more than one lease of different ownership is dedicated to the well, have the interests of all owners been consolidated by communitization, unitization, force-pooling, etc?
☐ Yes ☐ No If answer is "yes," type of consolidation _____

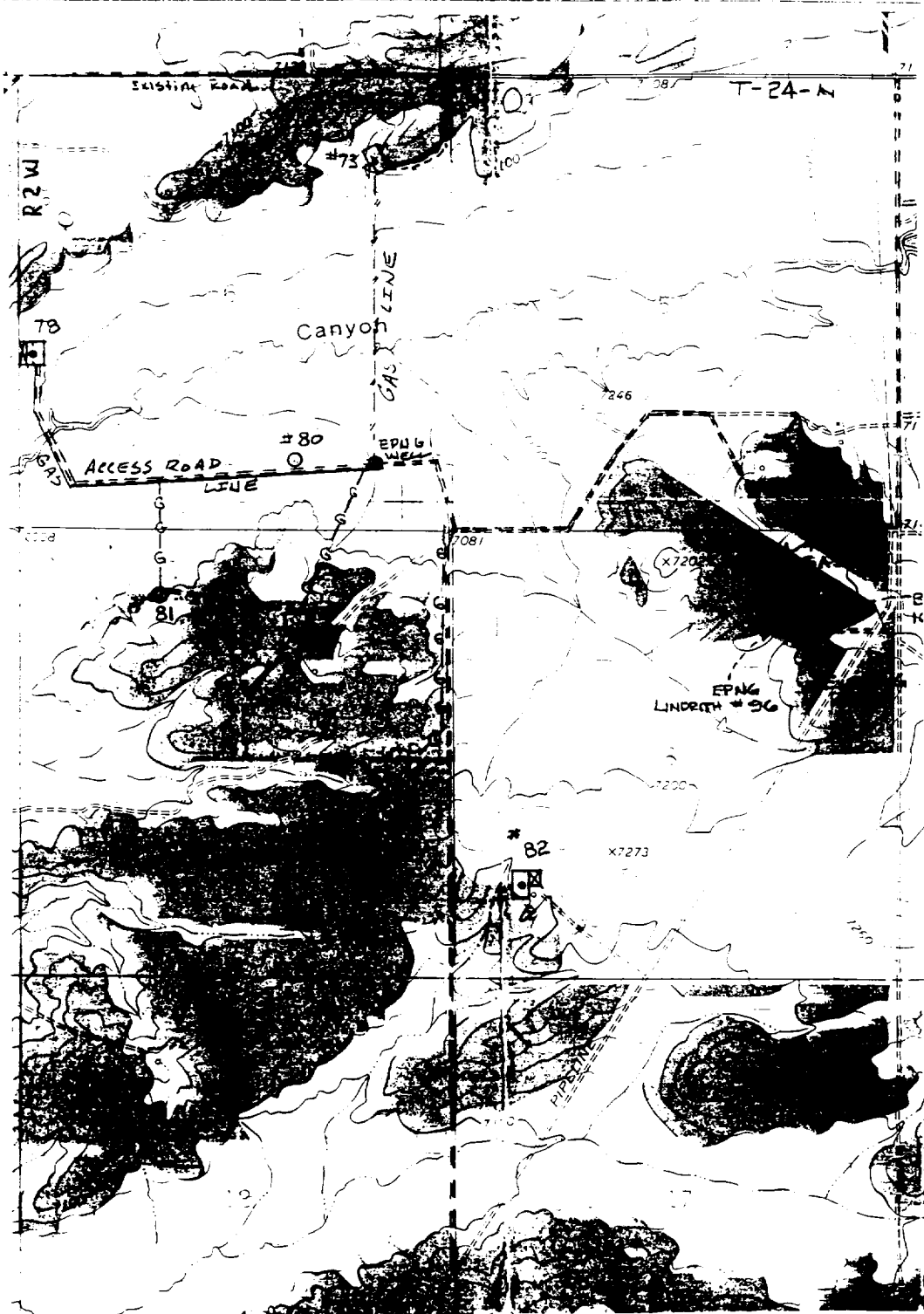
If answer is "no," list the owners and tract descriptions which have actually been consolidated. (Use reverse side of this form if necessary.) _____

No allowable will be assigned to the well until all interests have been consolidated (by communitization, unitization, forced-pooling, or otherwise) or until a non-standard unit, eliminating such interests, has been approved by the Commission.



CERTIFICATION	
I hereby certify that the information contained herein is true and complete to the best of my knowledge and belief.	
<i>Shirley Todd</i>	
Name	S. A. TODD
Position	ENV. & REG. TECH
Company	MOBIL PROD TX & N.M. INC & MOBIL EXPLOR. & PROD. US INC
Date	12/10/91
I hereby certify that the well location shown on this plat was plotted from field notes of actual surveys made by me or under my supervision, and that the same is true and correct to the best of my knowledge and belief.	
Date Surveyed	October 23, 1991
J. ROGER MILLER NEW MEXICO REG. NO. 9752	

100-443887-100



PROPOSED LOCATION

MOBIL EXPLORATION AND PRODUCING U.S. INC.

MIDLAND DIVISION

MAP "B"

LINDRITH "B" UNIT

LOCATION # 82

RIO ARRIBA COUNTY,

NEW MEXICO

G.E. WILKINSON 11-8-91 SCALE: 1" = 2000'