


UNITED STATES
DEPARTMENT OF THE INTERIOR
BUREAU OF LAND MANAGEMENT

APPLICATION FOR PERMIT TO DRILL, DEEPEN, OR PLUG BACK

1a. Type of Work DRILL	RECEIVED SEP 19 1994	5. Lease Number SF-080472
1b. Type of Well GAS SWD		6. If Indian, All. or Tribe
2. Operator MERIDIAN OIL 14538	OIL CON. DIV. DIST. 3	7. Unit Agreement Name
3. Address & Phone No. of Operator PO Box 4289, Farmington, NM 87499 (505) 326-9700	8. Farm or Lease Name 15707 Jillson Federal SWD-	9. Well Number 1
4. Location of Well 2305' FNL, 2415' FWL Latitude 36° 19' 32", Longitude 107° 10' 48"	10. Field, Pool, Wildcat Entrada 96162	11. Sec, Twn, Rge, Mer. F Sec 8, T-24-N, R-3-W NMPM
14. Distance in Miles from Nearest Town 8 miles to Lindrith, NM	12. County Rio Arriba	13. State NM
15. Distance from Proposed Location to Nearest Property or Lease Line 2305'	API #: 30-039-25465	
16. Acres in Lease	17. Acres Assigned to Well 160 N/A	
18. Distance from Proposed Location to Nearest Well, Drig, Compl, or Applied for on this Lease 1500'		
19. Proposed Depth 8800'	20. Rotary or Cable Tools Rotary	
21. Elevations (DF, FT, GR, Etc.) 6907' GR	22. Approx. Date Work will Start 3rd quarter 1994	
23. Proposed Casing and Cementing Program See Operations Plan attached		
24. Authorized by:  Regional Drilling Engineer	7-11-94 Date	

PERMIT NO. _____ APPROVAL DATE _____
APPROVED BY (Original Signed) HECTOR A. VILLALOBOS AREA MANAGER
TITLE RIO PUERCO RESOURCE AREA DATE SEP 16 1994

Archaeological Report to be submitted
Threatened and Endangered Species Report to be submitted
NOTE: This format is issued in lieu of U.S. BLM Form 3160-3

R-10168

NMCCD

District I
PO Box 1980, Hobbs, NM 88241-1980
District II
PO Drawer DD, Artesia, NM 88211-0719
District III
1000 Rio Brazos Rd., Aztec, NM 87410
District IV
PO Box 2088, Santa Fe, NM 87504-2088

State of New Mexico
Energy, Minerals & Natural Resources Department

OIL CONSERVATION DIVISION
PO Box 2088
Santa Fe, NM 87504-2088

Form C-102
Revised February 21, 1994
Instructions on back
Submit to Appropriate District Office
State Lease - 4 Copies
Fee Lease - 3 Copies

☐ AMENDED REPORT

WELL LOCATION AND ACREAGE DEDICATION PLAT

1 API Number 30-039-25465		2 Pool Code 96162		3 Pool Name SWD: Morrison-Bluff-Entrada	
4 Property Code 15707		5 Property Name Jillson Federal SWD			6 Well Number 1
7 OGRID No. 14538		8 Operator Name Meridian Oil Inc.			9 Elevation 6907'

10 Surface Location

UL or lot no. F	Section 8	Township 24 N	Range 3 W	Lot Idn	Feet from the 2305	North/South line North	Feet from the 2415	East/West line West	County R.A.
--------------------	--------------	------------------	--------------	---------	-----------------------	---------------------------	-----------------------	------------------------	----------------

11 Bottom Hole Location If Different From Surface

UL or lot no.	Section	Township	Range	Lot Idn	Feet from the	North/South line	Feet from the	East/West line	County
12 Dedicated Acres 13 Joint or Infill 14 Consolidation Code 15 Order No. n/a									

NO ALLOWABLE WILL BE ASSIGNED TO THIS COMPLETION UNTIL ALL INTERESTS HAVE BEEN CONSOLIDATED
OR A NON-STANDARD UNIT HAS BEEN APPROVED BY THE DIVISION

16 USA SF-080472 2305' 2415'		5278.02'		17 OPERATOR CERTIFICATION I hereby certify that the information contained herein is true and complete to the best of my knowledge and belief Signature Peggy Bradfield Printed Name Regulatory Representative Title 7-8-94 Date	
5280.00'		8 RECEIVED SEP 19 1994 OIL CON. DIV. DIST. 3		18 SURVEYOR CERTIFICATION I hereby certify that the well location shown on this plat was plotted from field notes of actual surveys made by me or under my supervision, and that the same is true and correct to the best of my belief. 5-9-94 Date of Survey Signature and Seal 6857 Certificate Number	
5280.00'		5281.32'			

OPERATIONS PLAN

Well Name: Jillson Federal SWD #1
Location: 2305'FNL, 2415'FWL, Section 8, T-24-N, R-3-W
 Rio Arriba County, New Mexico
Formation: Entrada - for Salt Water Disposal
Elevation: 6907'GL

Formation:	Top	Bottom	Contents
Surface	San Jose	2703'	
Ojo Alamo	2703'	2830'	aquifer
Kirtland	2830'	2860'	
Fruitland	2860'	3084'	
Fruitland Coal Top	2970'	3059'	gas & salt water
Pictured Cliffs	3084'	3248'	
Lewis	3248'	3481'	
Chacra	3481'	4744'	
Cliff House	4744'	4771'	
Menefee	4771'	5211'	
Pt Lookout	5211'	5703'	
Mancos	5703'	6371'	
Gallup	6371'	6971'	
Juana Lopez	6917'	7237'	
Greenhorn	7237'	7297'	
Graneros	7297'	7321'	
Dakota	7321'	7616'	
Burro Canyon	7616'	7721'	
Morrison	7721'	8311'	
Bluff	8311'	8381'	
Summerville	8381'	8411'	
Todilto	8411'	8441'	
Entrada	8441'	8683'	
Chinle	8683'		
Total Depth	8800'		

Logging Program: DIL-SP-GR - surface to Total Depth.
 Microlog - Cal-GR - 2500' to Total Depth

Mud Program:

Interval	Type	Weight	Vis.	Fluid Loss
0- 300'	Spud	8.4-8.9	40-50	no control
300-8800'	Non-dispersed	8.4-9.1	30-60	no control

Casing Program:

Hole Size	Depth Interval	Csg. Size	Wt.	Grade
12 1/4"	0' - 300'	9 5/8"	36.0#	H-40
8 3/4"	0' - 8800'	7"	23.0#	N-80

Injection Tubing Program:

0' - 8800' 4 1/2" 10.5# K-55

July 08, 1994

Float Equipment: 9 5/8" surface casing - saw tooth guide shoe. Centralizers will be run in accordance with Onshore Order #2.

7" casing -self-fill float guide shoe and self-fill float collar. Three centralizers run every other joint above shoe, then every fourth joint to base of Ojo Alamo. Run self-fill float collar one joint above guide shoe. Two turbolizing type centralizers - one below and one into the base of the Ojo Alamo @ 2830'. Standard centralizers thereafter every fourth joint up to the base of the surface pipe.

Wellhead Equipment: 9 5/8" x 7" x 4 1/2" x 11" 3000 psi xmas tree assembly.

Cementing:

9 5/8" surface casing - cement with ²⁹¹~~100~~ sx Class "B" cement with 1/4# flocele/sx and 3% calcium chloride (~~100~~²⁹¹ cu.ft. of slurry, 200% excess to circulate to surface). WOC 12 hrs. -~~353~~ Test casing to 600 psi/30 minutes.

7" casing -

First Stage: Cement to circulate to stage tool @ 5703'. Lead w/420 sx 65/35 Class "B" Pozmix w/6% gel, and 1/4#/sx cellophane flakes. Tail w/100 sx Class "B" cement. WOC 4 hours prior to pumping second stage. (Slurry volume: 833 cu.ft. Excess slurry 80%.)

Second Stage: Cement to circulate to stage tool @ 2730'. Lead w/401 sx 65/35 Class "B" Pozmix w/6% gel, 2% calcium chloride, and 1/4#/sx cellophane flakes. Tail w/100 sx Class "B" cement w/2% calcium chloride. WOC 4 hours prior to pumping second stage. (Slurry volume: 804 cu.ft. Excess slurry 80%.)

Third Stage: Cement to circulate to surface. Lead w/365 sx 65/35 Class "B" Pozmix w/6% gel, 2% calcium chloride, and 1/4#/sx cellophane flakes. Tail w/100 sx Class "B" cement w/2% calcium chloride. WOC a minimum of 18 hours prior to cleanout. (Slurry volume: 739 cu.ft. Excess slurry: 80%,)

BOP and tests:

Surface to TD - 11" 2000 psi (minimum double gate BOP stack (Reference Figure #1 and #2). Prior to drilling out surface casing, test rams to 600psi/30 min.

Completion - 6" 2000 psi (minimum) double gate BOP stack (Reference Figure #2). Prior to completion operations, test rams to 2000 psi/15 min.

From surface to TD - choke manifold (Reference Figure #3).

Pipe rams will be actuated at least once each day and blind rams actuated once each trip to test proper functioning. An upper kelly cock valve with handle and drill string safety valves to fit each drill string will be maintained and available on the rig floor.

July 08, 1994

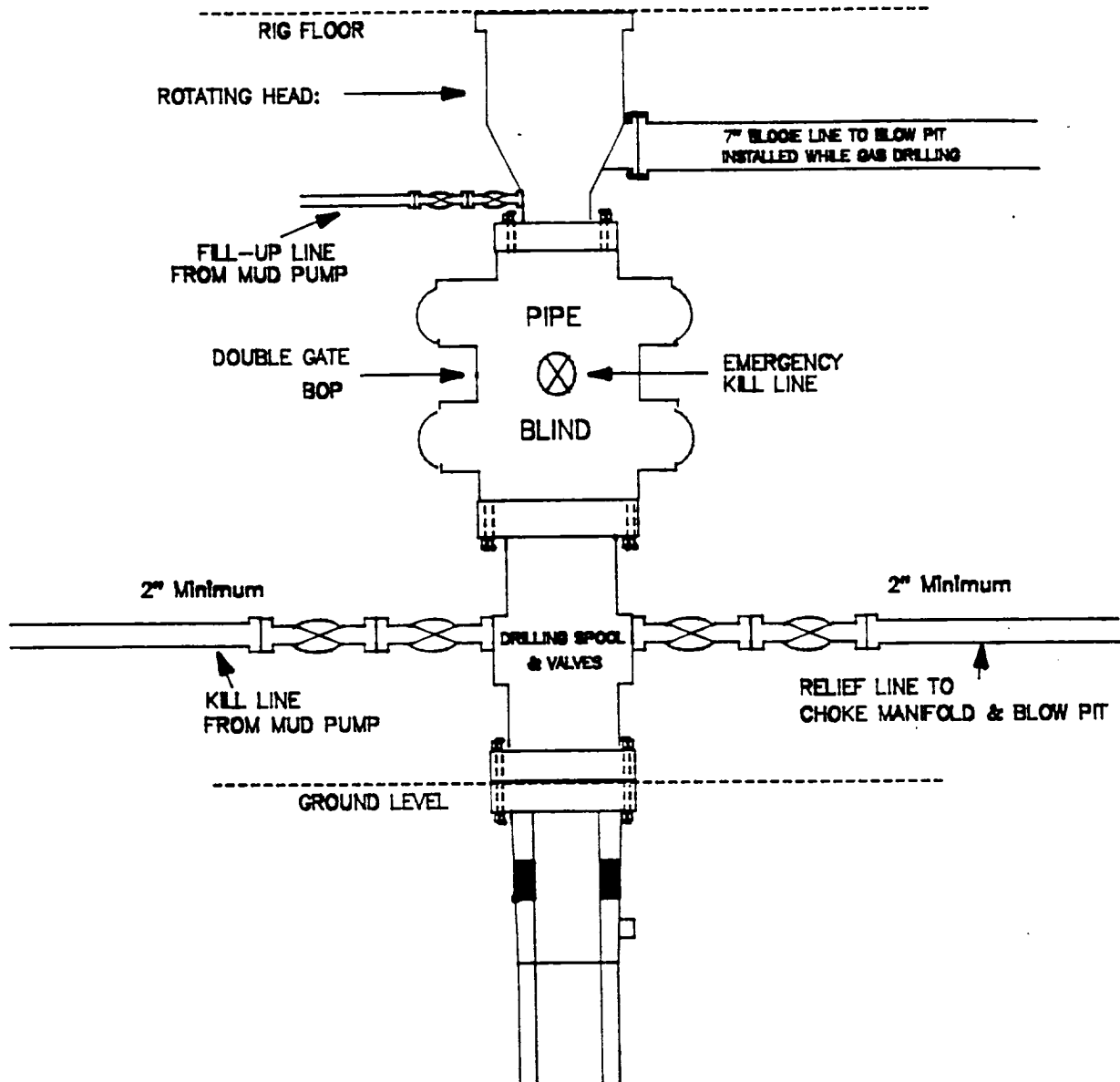
Additional information:

- * This well is for the disposal of produced water.
- * This well will be used for disposal of off-lease water in compliance with State and Federal Regulations.
- * New casing will be utilized.
- * Pipe movement (either rotation or reciprocation) will be done if hole conditions permit.

1. The first part of the document is a list of the names of the members of the committee, which is headed by the Chairman, Mr. J. H. M. J. van der Meulen. The list includes the names of the members of the committee, the names of the members of the committee, and the names of the members of the committee.

MERIDIAN OIL INC.

BOP Configuration 2M psi SYSTEM

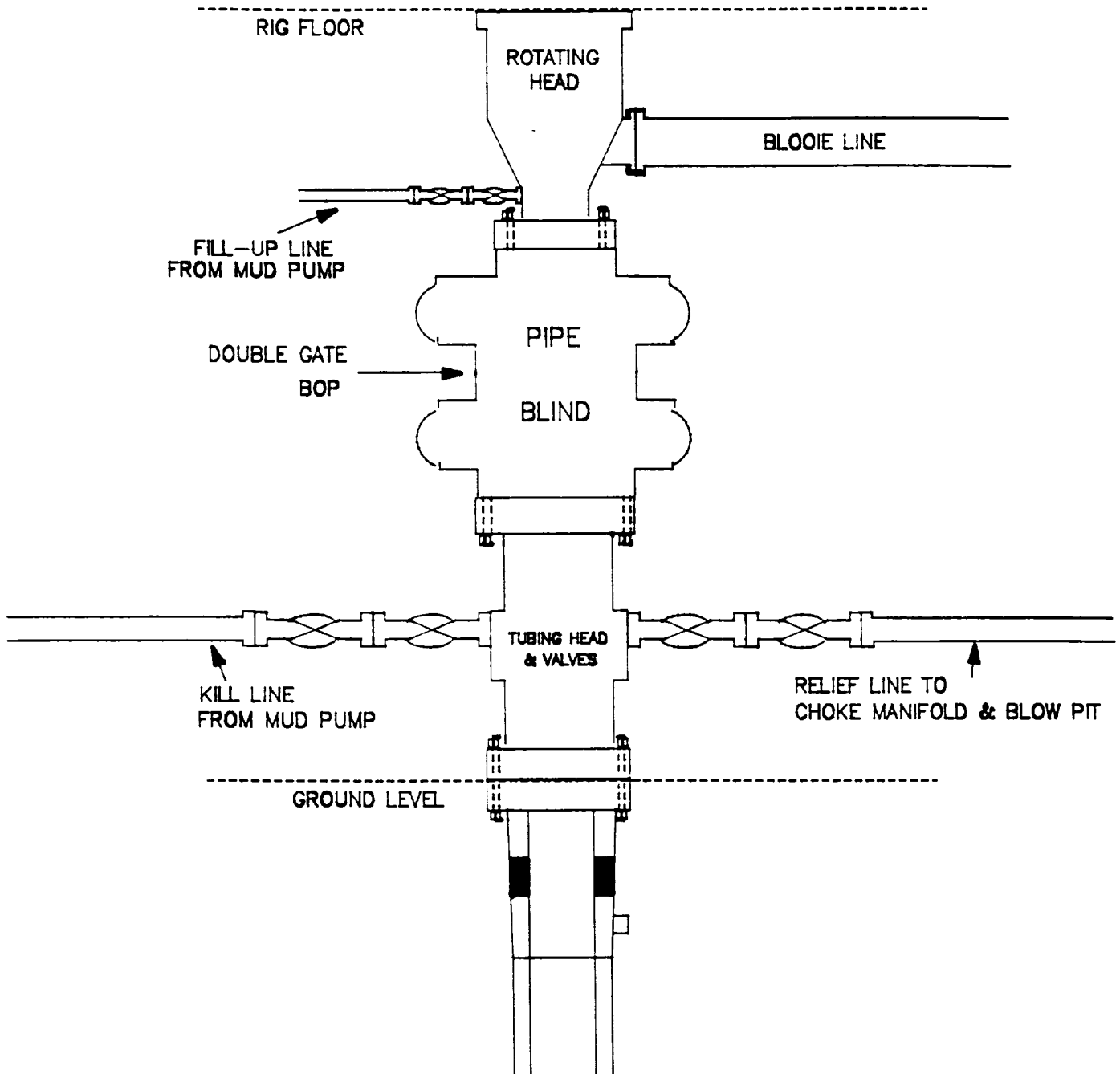


11" Bore, 2000psi minimum working pressure double gate BOP to be equipped with blind and pipe rams. A Schaffer Type 50 or equivalent rotating head to be installed on the top of the BOP. All equipment is 2000psi working pressure/or greater.

Figure #1

MERIDIAN OIL INC.

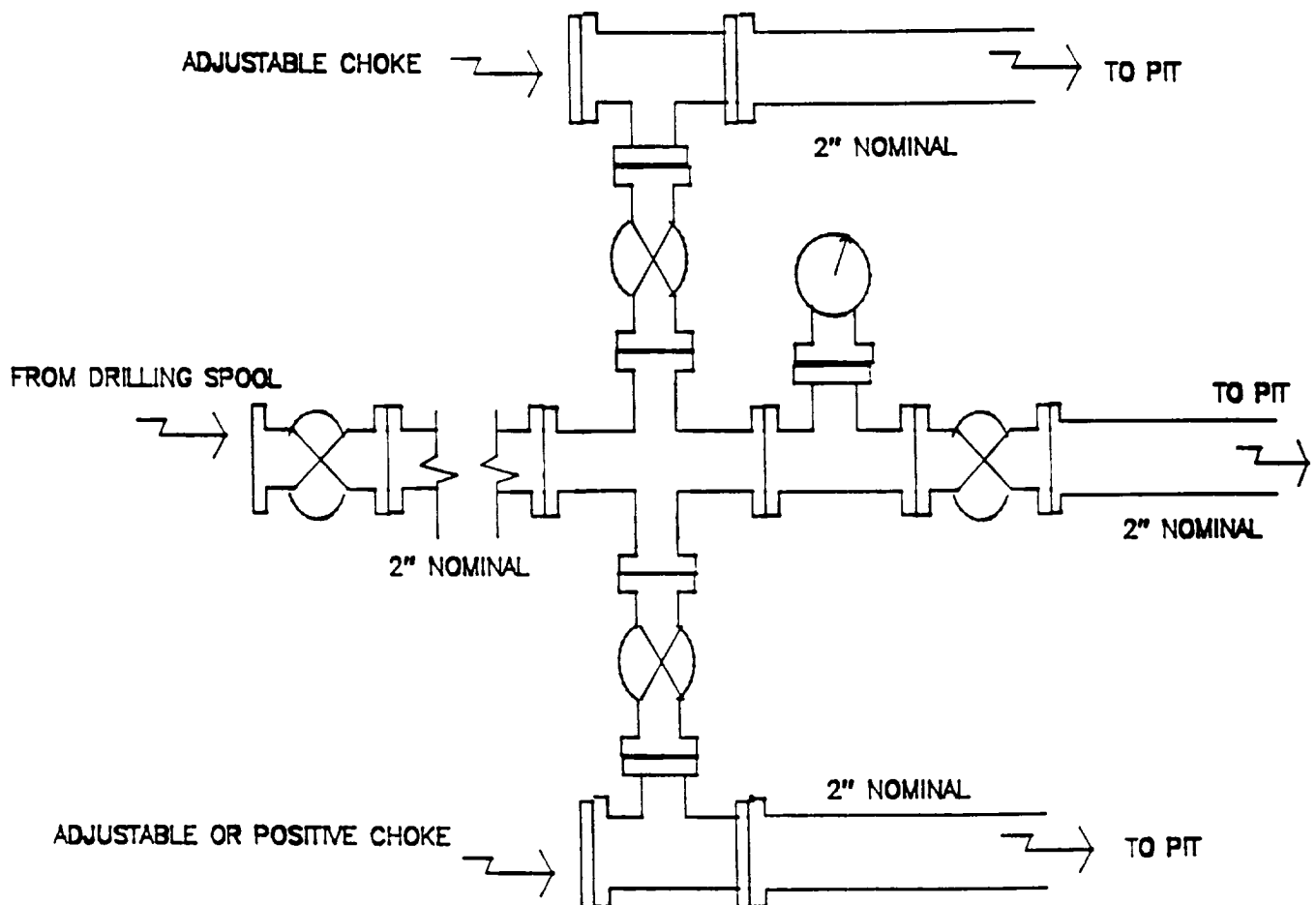
BOP Configuration 2M psi SYSTEM



Minimum BOP installation for Completion operations. 7 1/16" Bore (6" Nominal), 3000psi minimum working pressure double gate BOP to be equipped with blind and pipe rams.

Figure #2

MERIDIAN OIL INC.
Choke Manifold Configuration
2M psi SYSTEM



Minimum choke manifold installation from surface to Total Depth.
2" minimum, 2000psi working pressure equipment with two chokes.

Figure #3

MERIDIAN OIL
Jillson Federal SWD #1
Multi-Point Surface Use Plan

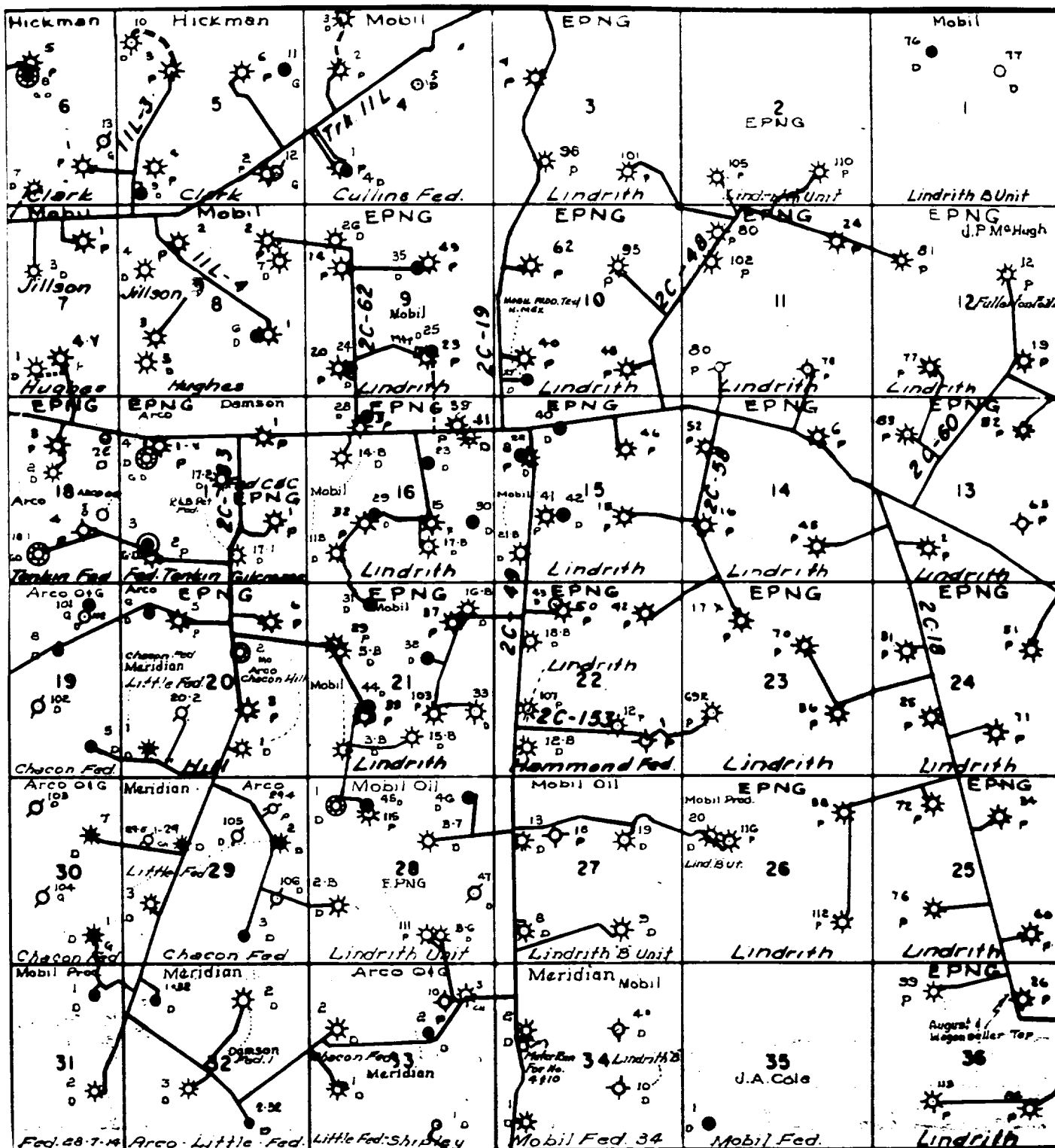
1. Existing Roads - Refer to Map No. 1. Existing roads used to access the proposed location will be properly maintained for the duration of the project. Bureau of Land Management right-of-way has been applied for as shown on Map No. 1.
2. Planned Access Road - Refer to Map No. 1. None required.
3. Location of Existing Wells - Refer to Map No. 1A.
4. Location of Existing and/or Proposed Facilities if Well is Productive -
 - a. On the Well Pad - Refer to Plat No. 1, anticipated production facilities plat.
 - b. Off the Well Pad - Anticipated facilities off the well pad will be applied for as required.
5. Location and Type of Water Supply - Water will be hauled by truck for the proposed project and will be obtained from Cottonwood Water Hole located SW Section 10, T-24-N, R-4-W, New Mexico.
6. Source of Construction Materials - If construction materials are required for the proposed project, such materials will be obtained from a commercial quarry.
7. Methods of Handling Waste Materials - All garbage and trash materials will be removed from the site for proper disposal. A portable toilet will be provided for human waste and serviced in a proper manner. If liquids are left in the reserve pit after completion of the project, the pit will be fenced until the liquids have had adequate time to dry. The location clean-up will not take place until such time as the reserve pit can be properly covered over to prevent run-off from carrying waste materials into the watershed. All reserve pits will be lined with 12 mil bio-degradable plastic liner. All earthen pits will be so constructed as to prevent leakage from occurring; no earthen pit will be located on natural drainage. Generation of hazardous waste is not anticipated. Federal regulations will be adhered to regarding handling and disposal of such waste if so generated.
8. Ancillary Facilities - None anticipated.
9. Wellsite Layout - Refer to the location diagram and to the wellsite cut and fill diagram (Figure No. 4). The blow pit will be constructed with a 2'/160' grade to allow positive drainage to the reserve pit and prevent standing liquids in the blow pit.

10. Plans for Restoration of the Surface - After completion of the proposed project, the location will be cleaned and leveled. The location will be left in such a condition that will enable reseeding operations to be carried out. Seed mixture as designated by the responsible government agency will be used. The reseeding operations will be performed during the time period set forth by the responsible government agency. The permanent location facilities will be painted as designated by the responsible government agency.
11. Surface Ownership - Bureau of Land Management.
12. Other Information - Environmental stipulations as outlined by the responsible government agency will be adhered to. Refer to the archaeological report for a description of the topography, flora, fauna, soil characteristics, dwellings, historical and cultural sites.
13. Operator's Representative and Certification - Meridian Oil Regional Drilling Manager, Post Office Box 4289, Farmington, NM 87499, telephone (505) 326-9700. I hereby certify that I, or persons under my direct supervision, have inspected the proposed drill site and access route; that I am familiar with the conditions which presently exist; that the statements made in this plan, are to the best of my knowledge, true and correct; and that the work associated with the operations proposed herein will be performed by Meridian Oil Inc. and its contractors and subcontractors in conformity with this plan and the terms and conditions under which it is approved.



Regional Drilling Engineer

7/10/94
Date



MERIDIAN OIL INC.
 Pipeline Map
 T-24-N, R-03-W
 Rio Arriba County, New Mexico
 Jillson Federal SWD #1
 Map #1A

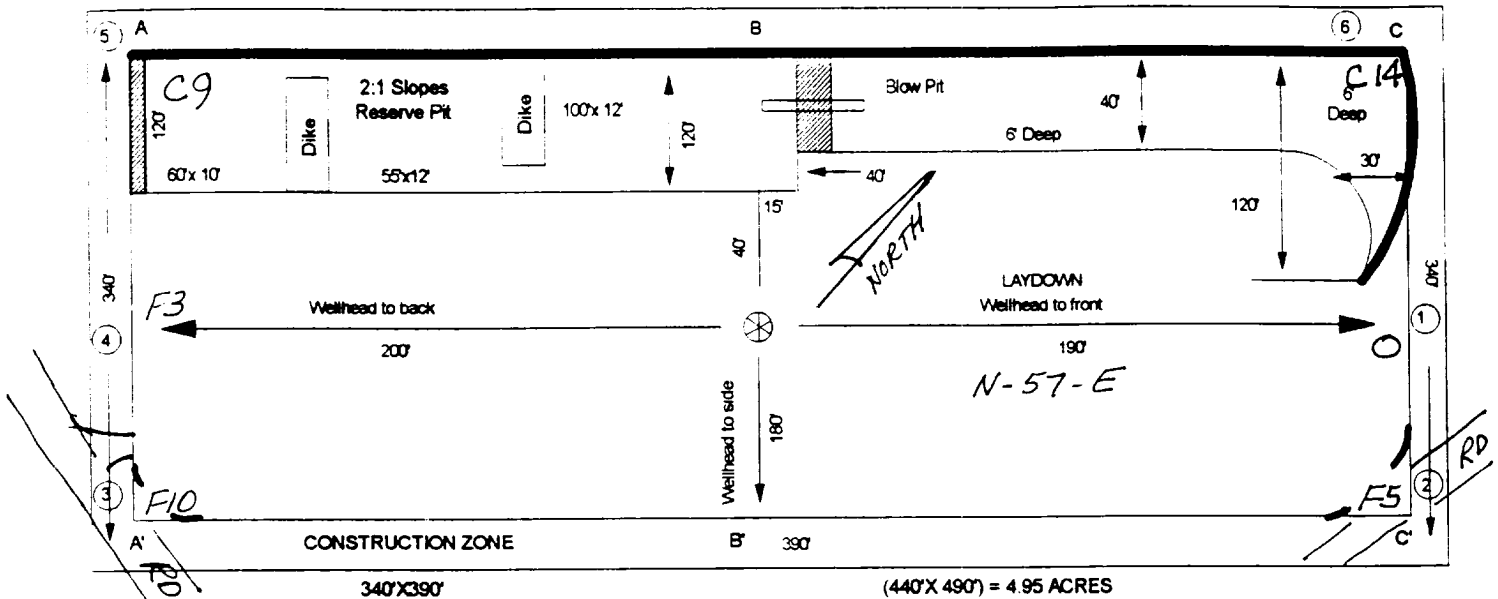
MERIDIAN 21L

PLAT #3

BARKER DOME

HORIZONTALS

NAME: JILLSON FEDERAL SWD #1
 FOOTAGE: 2305' FNL 2415' FWL
 SEC 8 TWN 24 N.R. 3 W NMPM
 CO: RIO ARriba ST: NM
 ELEVATION: 6907' DATE: 5-9-94

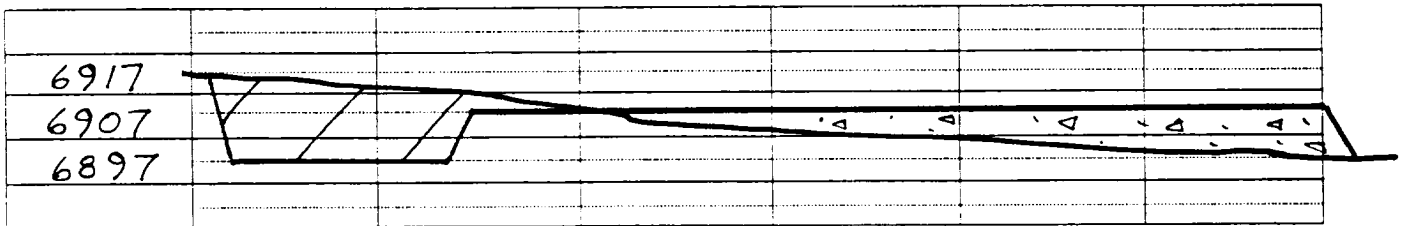


Reserve Pit Dike : to be 8' above Deep side; (overflow - 3' wide and 1' above shallow side.)

Blow Pit : overflow pipe halfway between top and bottom and extend over plastic liner and into blow pit.

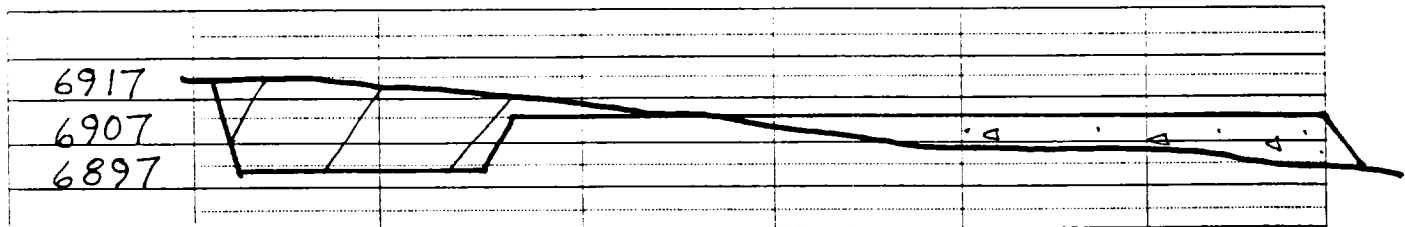
A-A'

C/L



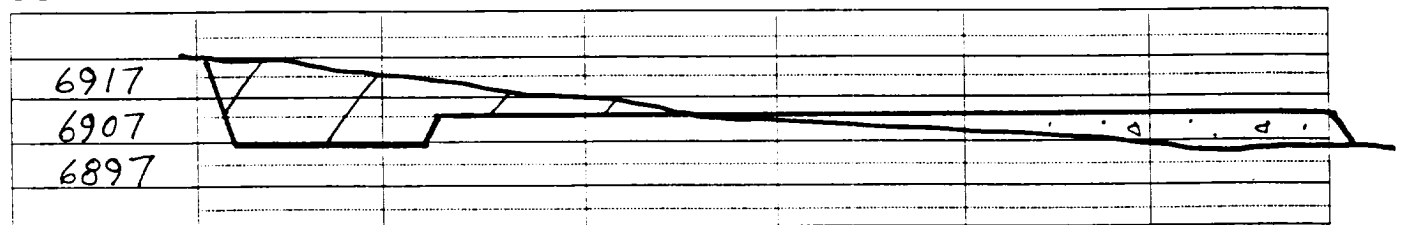
B-B'

C/L



C-C'

C/L



Note: Contractor should call One-Call for location of any marked or unmarked buried pipelines or cables on well pad and/or access road at least 2 working days prior to construction.

