

UNITED STATES
DEPARTMENT OF THE INTERIOR
BUREAU OF LAND MANAGEMENT

APPLICATION FOR PERMIT TO DRILL OR DEEPEN

1a. TYPE OF WORK

DRILL ☒DEEPEN ☐

b. TYPE OF WELL

OIL
WELL ☐GAS
WELL ☒OTHER ☐SINGLE
ZONE ☒MULTIPLE
ZONE ☐

2. NAME OF OPERATOR

Robert L. Bayless 19418

3. ADDRESS AND TELEPHONE NO.

P.O. Box 168 Farmington, NM 87499 (505) 326-2659

4. LOCATION OF WELL (Report location clearly and in accordance with any State requirements.*)

At surface

1850' FNL & 890' FWL

At proposed prod. zone
same

14. DISTANCE IN MILES AND DIRECTION FROM NEAREST TOWN OR POST OFFICE*

15. DISTANCE FROM PROPOSED*

LOCATION TO NEAREST
PROPERTY OR LEASE LINE, FT.
(Also to nearest drlg. unit line, if any)

890

18. DISTANCE FROM PROPOSED LOCATION*

TO NEAREST WELL, DRILLING, COMPLETED,
OR APPLIED FOR, ON THIS LEASE, FT.

1100 Ft.

16. NO. OF ACRES IN LEASE

19. PROPOSED DEPTH

2475

17. NO. OF ACRES ASSIGNED
TO THIS WELL

160 159.02

20. ROTARY OR CABLE TOOLS

Rotary

21. ELEVATIONS (Show whether DF, RT, GR, etc.)

6836 G.L.

22. APPROX. DATE WORK WILL START*

23.

PROPOSED CASING AND CEMENTING PROGRAM

SIZE OF HOLE	GRADE, SIZE OF CASING	WEIGHT PER FOOT	SETTING DEPTH	QUANTITY OF CEMENT
8 3/4	J-55 7"	23#/ft.	120	15 sx Class B (18 C.F.)
6 1/4	J-55 4 1/2"	10.5#/ft.	2475	155 sx (262 C.F.)

This action is subject to technical and
procedural review pursuant to 43 CFR 3165.3
and appeal pursuant to 43 CFR 3165.4.

DRILLING OPERATIONS ARE
SUBJECT TO THE ATTACHED
"GENERAL INSTRUCTIONS"

Will drill 8 3/4" hole to 120 Ft. and set 7" 23.0#/ft. J-55 ST7C casing with 15sx (18 CF) of Class B cement, circulated to surface. Will drill 6 1/4" hole to 2475 Ft. with circulating medium of clear water, natural mud, and water loss control additives. No abnormal temperatures or pressures are anticipated. Induction and density logs will be run. Will set 2475 4 1/2" 10.5#/ft J-55 ST&C new casing with 155 sx (262 CF) cement, circulated to surface.

Estimated Tops

Ojo Alamo	1705
Kirtland	1850
Fruitland	2150
Pictured Cliffs	2301

RECEIVED
JUN 12 1995OIL CON. DIV.
DIST. 3

IN ABOVE SPACE DESCRIBE PROPOSED PROGRAM: If proposal is to deepen, give data on present productive zone and proposed new productive zone. If proposal is to drill or deepen directionally, give pertinent data on subsurface locations and measured and true vertical depths. Give blowout preventer program, if any.

24.

SIGNED

TITLE Petroleum Engineer

DATE 4-4-95

(This space for Federal or State office use)

PERMIT NO.

APPROVAL DATE

Application approval does not warrant or certify that the applicant holds legal or equitable title to those rights in the subject lease which would enable the applicant to conduct operations thereon.

CONDITIONS OF APPROVAL, IF ANY:

APPROVED BY

TITLE

*See Instructions On Reverse Side

Title 18 U.S.C. Section 1001 makes it a crime for any person knowingly and willfully to make to any department or agency of the United States a false statement.

APPROVED
AS AMENDED

JUN 09 1995

DISTRICT MANAGER

District I
PO Box 1980, Hobbs, NM 88241-1980
District II
PO Drawer DD, Artesia, NM 88211-0719
District III
1000 Rio Brazos Rd., Aztec, NM 87410
District IV
PO Box 2088, Santa Fe, NM 87504-2088

State of New Mexico
Energy, Minerals & Natural Resources Department

OIL CONSERVATION DIVISION
PO Box 2088
Santa Fe, NM 87504-2088

Form C-102
Revised February 21, 1994
Instructions on back
Submit to Appropriate District Office
State Lease - 4 Copies
Fee Lease - 3 Copies

☐ AMENDED REPORT

WELL LOCATION AND ACREAGE DEDICATION PLAT

¹ API Number <i>30-039-25517</i>	² Pool Code <i>71439</i>	³ Pool Name <i>Ballard PL</i>
⁴ Property Code <i>13249</i>	⁵ Property Name <i>BLUF MESA</i>	⁶ Well Number <i>3</i>
⁷ OGRID No. <i>19418</i>	⁸ Operator Name <i>ROBERT L. BAYLESS</i>	⁹ Elevation <i>6836</i>

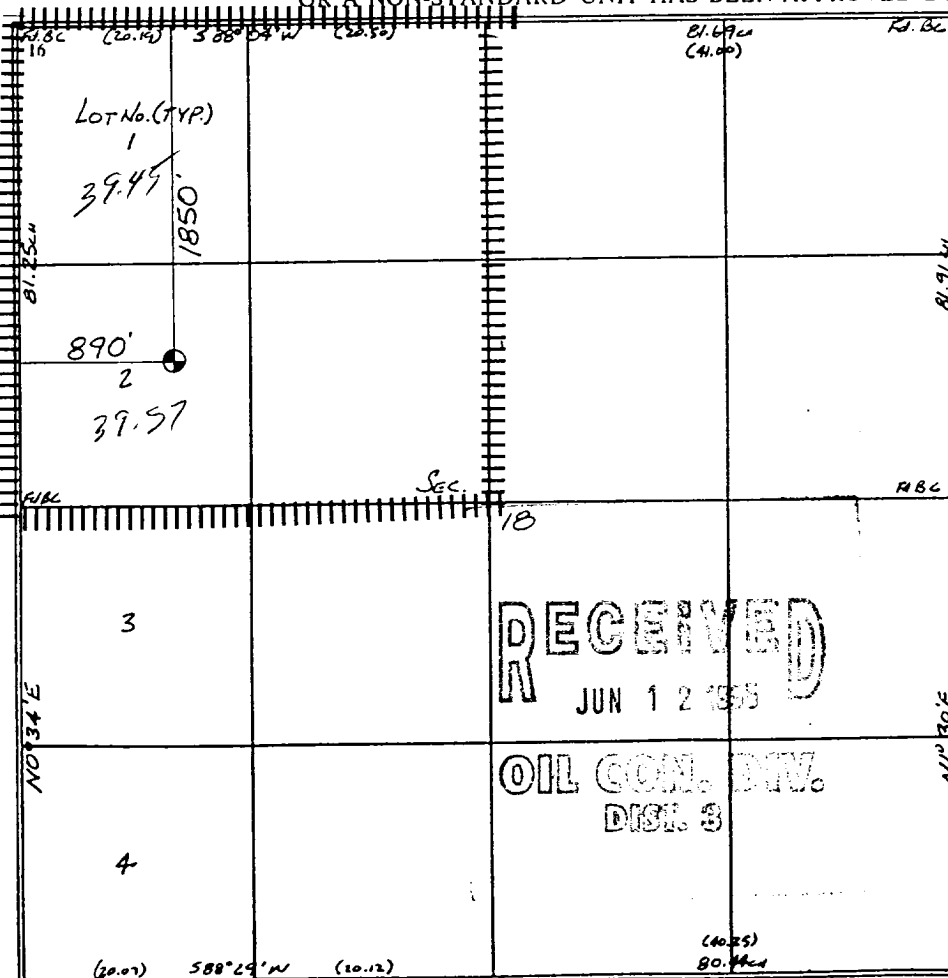
¹⁰ Surface Location

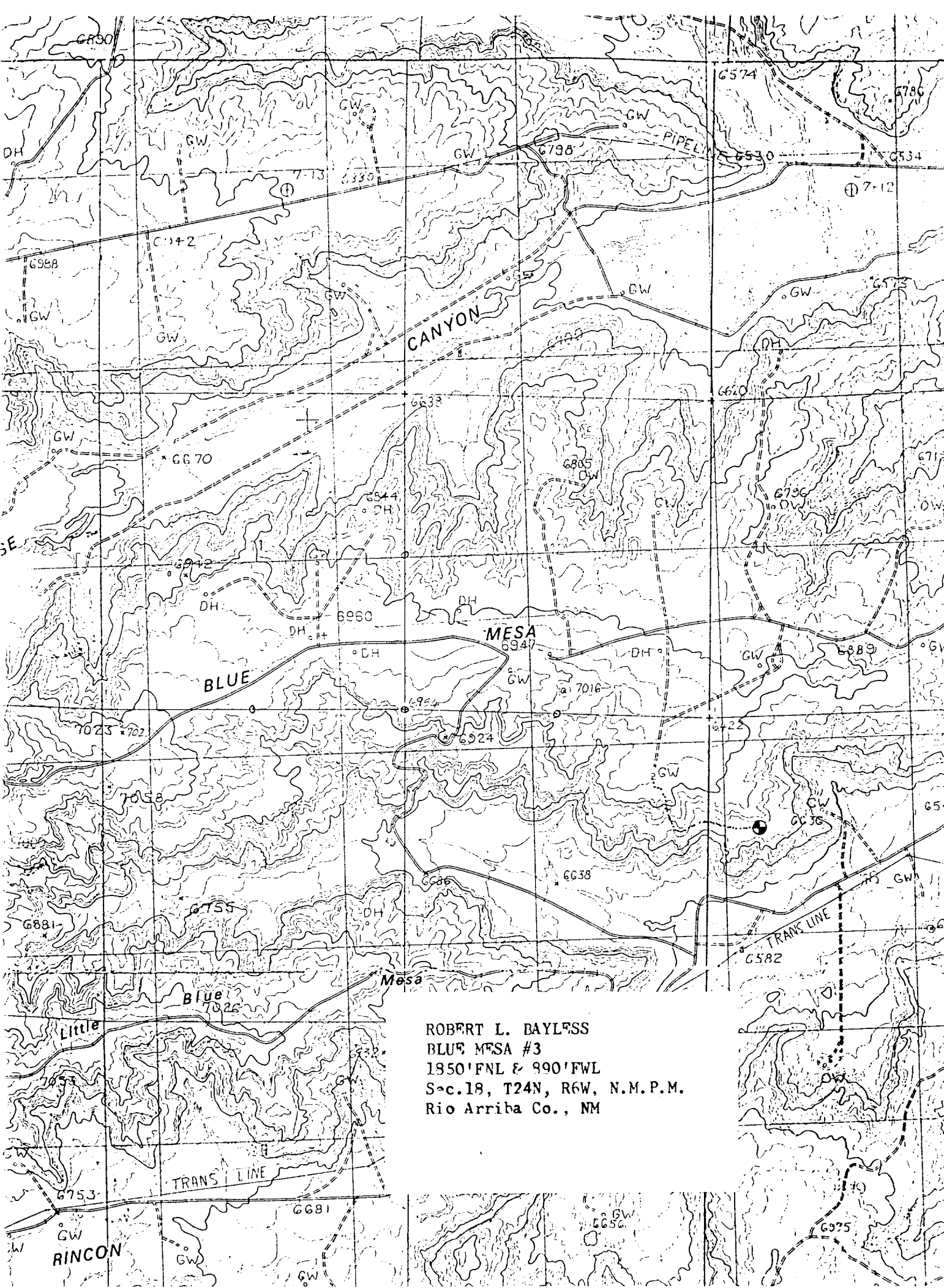
UL or lot no. <i>2</i>	Section <i>18</i>	Township <i>24 N</i>	Range <i>6 W</i>	Lot Idn	Feet from the <i>1850</i>	North/South line <i>North</i>	Feet from the <i>890</i>	East/West line <i>West</i>	County <i>Rio Arriba</i>
---------------------------	----------------------	-------------------------	---------------------	---------	------------------------------	----------------------------------	-----------------------------	-------------------------------	-----------------------------

¹¹ Bottom Hole Location If Different From Surface

UL or lot no.	Section	Township	Range	Lot Idn	Feet from the	North/South line	Feet from the	East/West line	County
<i>159.02</i>									
¹² Dedicated Acres	¹³ Joint or Infill	¹⁴ Consolidation Code	¹⁵ Order No.						

NO ALLOWABLE WILL BE ASSIGNED TO THIS COMPLETION UNTIL ALL INTERESTS HAVE BEEN CONSOLIDATED
OR A NON-STANDARD UNIT HAS BEEN APPROVED BY THE DIVISION

	<p>¹⁷ OPERATOR CERTIFICATION</p> <p>I hereby certify that the information contained herein is true and complete to the best of my knowledge and belief</p> <p><i>P. M. Bayless</i> Signature Price M. Bayless Printed Name Petroleum Engineer Title 4-4-95 Date</p> <p>¹⁸ SURVEYOR CERTIFICATION</p> <p>I hereby certify that the well location shown on this plat was plotted from field notes of actual surveys made by me or under my supervision, and that the same is true and correct to the best of my belief.</p> <p><i>8 Mar. 1995</i> Date of Survey <i>William E. Mahnke II</i> Signature and Seal of Professional Surveyor #8465 REGISTERED PROFESSIONAL LAND SURVEYOR William E. Mahnke II Certificate Number 8466</p>
--	---



ROBERT L. BAYLESS
BLUE MESA #3
1850' FNL & 890' FWL
Sec. 18, T24N, R6W, N.M.P.M.
Rio Arriba Co., NM