

UNITED STATES
DEPARTMENT OF THE INTERIOR
BUREAU OF LAND MANAGEMENT

APPLICATION FOR PERMIT TO DRILL OR DEEPEN

1a. TYPE OF WORK

DRILL ☒DEEPEN ☐

b. TYPE OF WELL

OIL
WELL ☒GAS
WELL ☐

OTHER

SINGLE
ZONE ☐MULTIPLE
ZONE ☐

2. NAME OF OPERATOR

Benson-Montin-Greer Drilling Corp. *2096*

3. ADDRESS AND TELEPHONE NO.

4900 College Blvd, Farmington, NM 87402 (505) 325-8874

4. LOCATION OF WELL (Report location clearly and in accordance with any State requirements.)*

At surface
500' FSL, 2200' FWL
At proposed prod. zone
Same

14. DISTANCE IN MILES AND DIRECTION FROM NEAREST TOWN OR POST OFFICE*

6 miles East, 4 miles North of Lindrith, NM

15. DISTANCE FROM PROPOSED*

LOCATION TO NEAREST
PROPERTY OR LEASE LINE, FT.
(Also to nearest drlg. unit line, if any) 500'

16. NO. OF ACRES IN LEASE

2480.00

17. NO. OF ACRES ASSIGNED

TO THIS WELL
64018. DISTANCE FROM PROPOSED LOCATION*
TO NEAREST WELL, DRILLING COMPLETED,
OR APPLIED FOR, ON THIS LEASE, FT.2.5 miles S.
of COU #8 (A-16) 7665'

19. PROPOSED DEPTH

20. ROTARY OR CABLE TOOLS

Rotary

21. ELEVATIONS (Show whether DF, RT, GR, etc.)

7532' Ground

22. APPROX. DATE WORK WILL START*

September 1997

PROPOSED CASING AND CEMENTING PROGRAM

SIZE OF HOLE	GRADE, SIZE OF CASING	WEIGHT PER FOOT	SETTING DEPTH	QUANTITY OF CEMENT
14 3/4"	10 3/4" J-55	40.5#	500'	354 Cubic Feet (300 sacks)
9 7/8"	7 5/8" S-95	26.40#	6950'	* see below
6 3/4"	5 1/2" K-55	17#	7660'	150 Cubic Feet (127 sacks)

Quantity of cement for 7 5/8" casing:

^{1.27}
214 cubic feet (170 sacks) 50% pozmix - 50% Portland cement
followed with 177 cubic feet (150 sacks)^{1.18}

7 5/8" casing to 5 1/2" liner overlap: 250-300'.

RECEIVED
JUL 13 1997OIL CON. DIV.
JUL 3

IN ABOVE SPACE DESCRIBE PROPOSED PROGRAM: If proposal is to deepen, give data on present productive zone and proposed new productive zone. If proposal is to drill or deepen directionally, give pertinent data on subsurface locations and measured and true vertical depths. Give blowout preventer program, if any.

24.

SIGNED

[Signature]

TITLE Vice-President

DATE

JUN 12 1997

(This space for Federal or State office use)

PERMIT NO.

APPROVAL DATE

Application approval does not warrant or certify that the applicant holds legal or equitable title to those rights in the subject lease which would entitle the applicant to conduct operations thereon.
CONDITIONS OF APPROVAL, IF ANY: *Attached - Provided by Cuba Ranger District - Santa Fe Nat Forest*

APPROVED BY

[Signature]

TITLE

[Signature]

DATE

[Signature]

See Instructions On Reverse Side

Title 18 U.S.C. Section 1001, makes it a crime for any person knowingly and willfully to make to any department or agency of the United States any false, fictitious or fraudulent statements or representations as to any matter within its jurisdiction.

DISTRICT I
P.O. Box 1980, Hobbs, N.M. 88241-1980

State of New Mexico
Energy, Minerals & Natural Resources Department

Form C-102

Revised February 21, 1994

Instructions on back

Submit to Appropriate District Office

State Lease - 4 Copies

Fee Lease - 3 Copies

DISTRICT II
P.O. Drawer DD, Artesia, N.M. 88211-0719

DISTRICT III
1000 Rio Brazos Rd., Aztec, N.M. 87410

DISTRICT IV
PO Box 2088, Santa Fe, NM 87504-2088

OIL CONSERVATION DIVISION

P.O. Box 2088
Santa Fe, NM 87504-2088

☐ AMENDED REPORT

WELL LOCATION AND ACREAGE DEDICATION PLAT

1 API Number 30-039-25713		2 Pool Code 50440		3 Pool Name WEST PUERTO CHIQUETO MANCOS (039)	
4 Property Code 1954		5 Property Name UNIT CANADA OJITOS N-28			6 Well Number 28-45
7 OGRID No. 2096		8 Operator Name BENSON-MONTIN-GREER			9 Elevation 7532

10 Surface Location

UL or lot no.	Section	Township	Range	Lot Idn	Feet from the	North/South line	Feet from the	East/West line	County
N	28	T-25-N	R-1-W		500	SOUTH	2200	WEST	RIO ARRIBA

11 Bottom Hole Location If Different From Surface

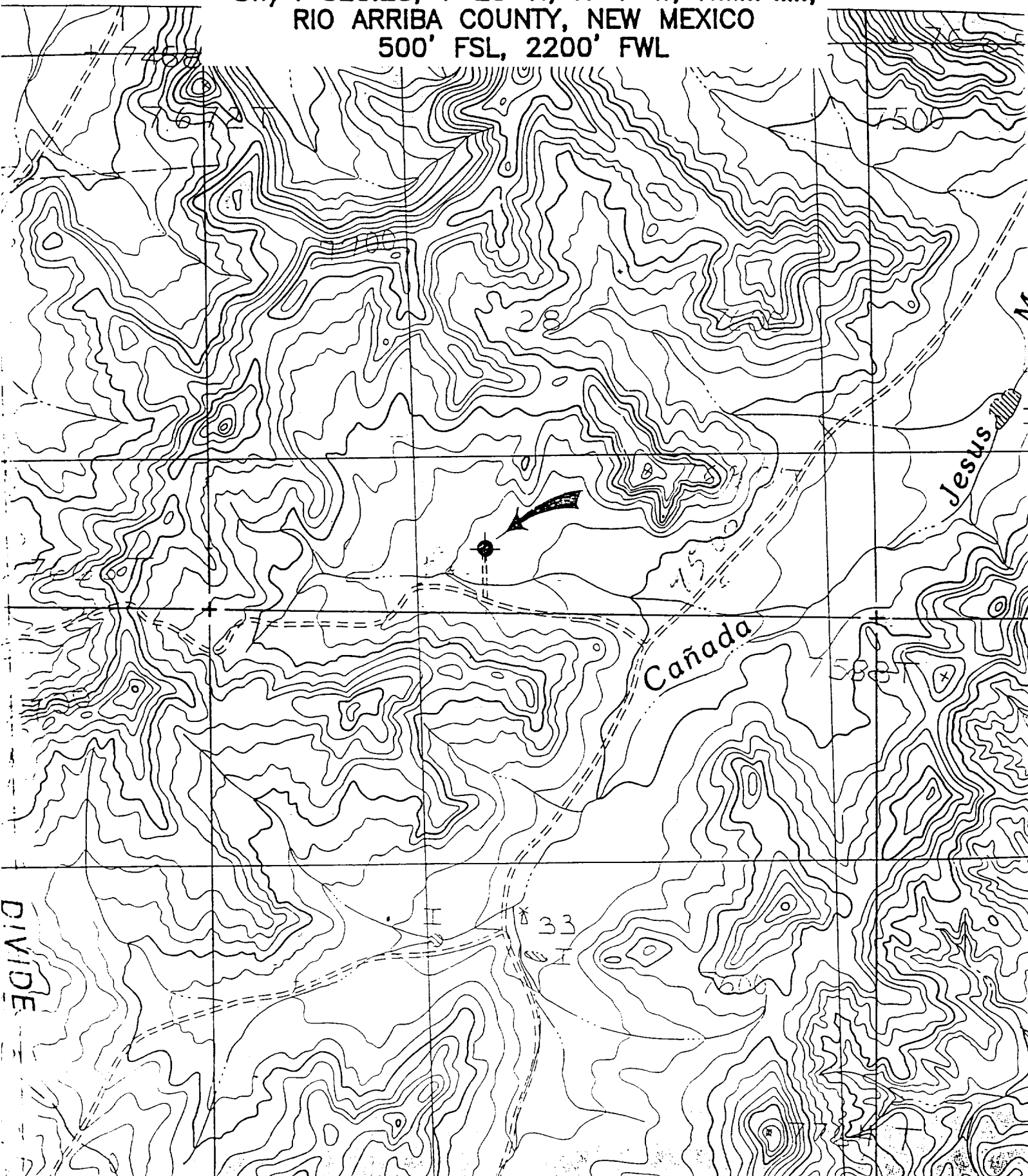
UL or lot no.	Section	Township	Range	Lot Idn	Feet from the	North/South line	Feet from the	East/West line	County

12 Dedicated Acres	13 Joint or Infill	14 Consolidation Code	15 Order No.

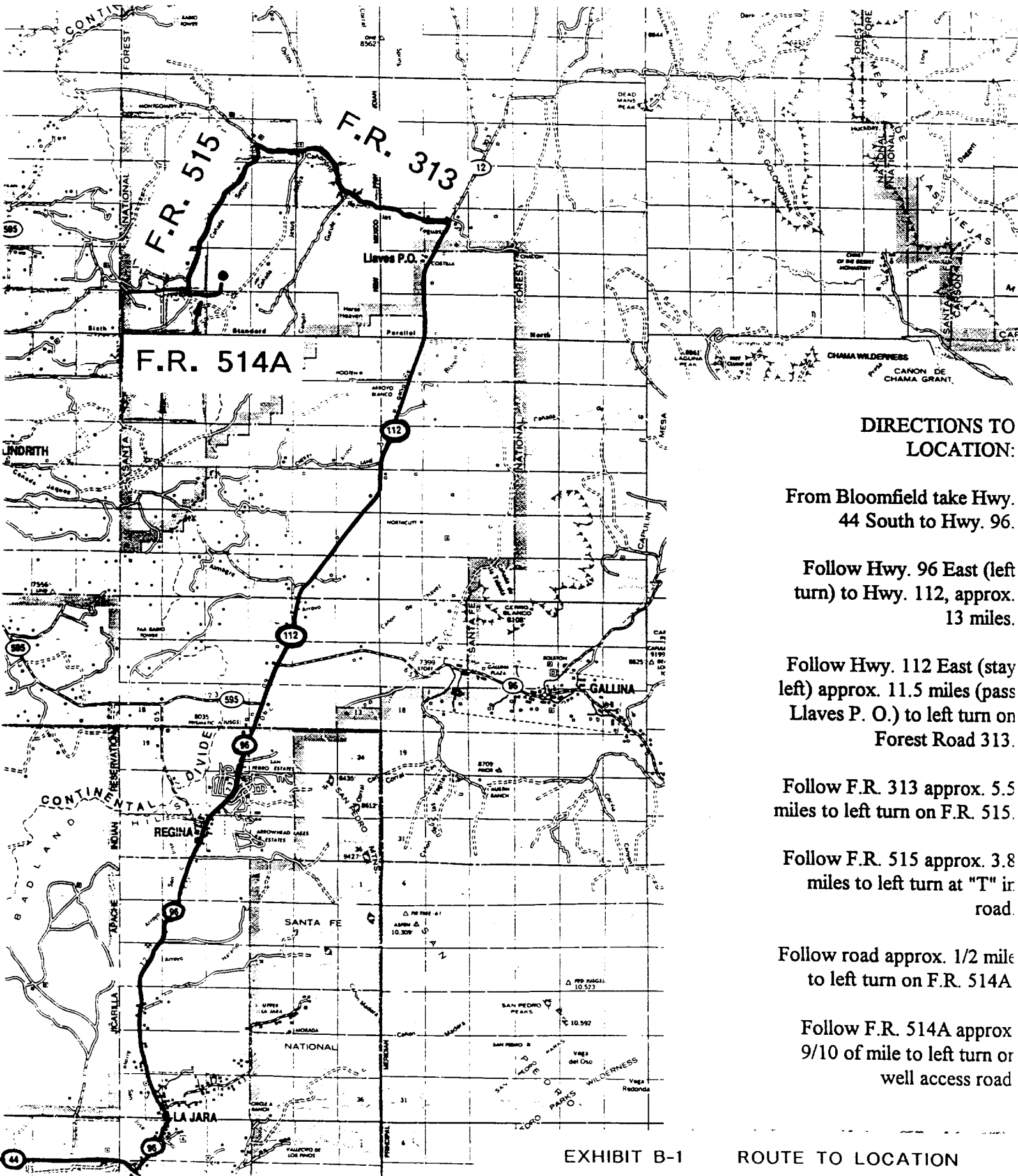
NO ALLOWABLE WILL BE ASSIGNED TO THIS COMPLETION UNTIL ALL INTERESTS HAVE BEEN CONSOLIDATED
OR A NON-STANDARD UNIT HAS BEEN APPROVED BY THE DIVISION

16				17 OPERATOR CERTIFICATION	
				I hereby certify that the information contained herein is true and complete to the best of my knowledge and belief.	
				Signature Virgil L. Stoabs Printed Name Vice-President Title JUN 12 1997 Date	
				18 SURVEYOR CERTIFICATION	
				I hereby certify that the well location shown on this plat was plotted from field notes of actual surveys made by me or under my supervision, and that the same is true and correct to the best of my belief.	
JUNE 5, 1996 Date of Survey				Signature and Seal of Professional Surveyor	
N 00-03 W 2200' S 89-57 E 500' 5272.6'					
				Certificate Number	

57' 30"



Benson-Montin-Greer Drilling Corp.
Canada Ojitos Unit #45 (N-28)
SE/SW Section 28, T25N, R1W
Rio Arriba County, New Mexico



**DIRECTIONS TO
LOCATION:**

From Bloomfield take Hwy.
44 South to Hwy. 96.

Follow Hwy. 96 East (left
turn) to Hwy. 112, approx.
13 miles.

Follow Hwy. 112 East (stay
left) approx. 11.5 miles (pass
Llaves P. O.) to left turn on
Forest Road 313.

Follow F.R. 313 approx. 5.5
miles to left turn on F.R. 515.

Follow F.R. 515 approx. 3.8
miles to left turn at "T" in
road.

Follow road approx. 1/2 mile
to left turn on F.R. 514A

Follow F.R. 514A approx
9/10 of mile to left turn or
well access road