

District I
PO Box 1980, Hobbs, NM 88241-1980

District II
PO Drawer DD, Artesia, NM 88211-0719

District III
1000 Rio Brazos Rd., Aztec, NM 87410

District IV
PO Box 2088, Santa Fe, NM 87504-2088

State of New Mexico
Energy, Minerals & Natural Resources Department

OIL CONSERVATION DIVISION
PO Box 2088
Santa Fe, NM 87504-2088

ORIGINAL

Form C-101

Submit to Appropriate District Office
State Lease - 6 Copies
Fee Lease - 5 Copies

☐ AMENDED REPORT

APPLICATION FOR PERMIT TO DRILL, RE-ENTER, DEEPEN, PLUGBACK, OR ADD A ZONE

| | | |
|---|--|---|
| ¹ Operator Name and Address McElvain Oil & Gas Properties Inc. 1050 17th Street, Suite 710 Denver, CO 80265 | | ² OGRID Number 22044 |
| ⁴ Property Code 23816 24227 | | ³ API Number 30-039-26201 |
| ⁵ Property Name Elk Com 1 | | ⁶ Well No. 8 |

| | | | | | | | | | |
|-------------------------------|---------------|-----------------|-------------|---------|-----------------------|---------------------------|----------------------|------------------------|----------------------|
| ⁷ Surface Location | | | | | | | | | |
| UL or lot no. H | Section 10 | Township 25N | Range 2W | Lot Idn | Feet from the 1975 | North/South line North | Feet from the 950 | East/West line East | County Rio Arriba |

| | | | | | | | | | |
|--|---------|----------|-------|---------|-------------------------------|------------------|---------------|----------------|--------|
| ⁸ Proposed Bottom Hole Location If Different From Surface | | | | | | | | | |
| UL or lot no. | Section | Township | Range | Lot Idn | Feet from the | North/South line | Feet from the | East/West line | County |
| ⁹ Proposed Pool 1 Blanco Mesa Verde | | | | | ¹⁰ Proposed Pool 2 | | | | |

| | | | | |
|-----------------------------------|--|---------------------------------------|--|--|
| ¹¹ Work Type Code N | ¹² Well Type Code G | ¹³ Cable/Rotary R | ¹⁴ Lease Type Code P | ¹⁵ Ground Level Elevation 7403 |
| ¹⁶ Multiple N | ¹⁷ Proposed Depth 6100 ' | ¹⁸ Formation Mesa Verde | ¹⁹ Contractor Not selected | ²⁰ Soud Date June, 1999 |

| | | | | | |
|--|-------------|--------------------|---------------|-----------------|---------------|
| ²¹ Proposed Casing and Cement Program | | | | | |
| Hole Size | Casing Size | Casing weight/foot | Setting Depth | Sacks of Cement | Estimated TOC |
| 12.250 " | 9.625 " | 36 | 300 ' | 160 | surface |
| 8.750 " | 7.000 " | 20 | 3806 ' | 510 | surface |
| 6.250 " | 4.500 " | 10.5 | 3686 - 6100 ' | 265 | 3686 ' |
| | | | | | |
| | | | | | |

22 Describe the proposed program. If this application is to DEEPEN or PLUG BACK give the data on the present productive zone and proposed new productive zone. Describe the blowout prevention program, if any. Use additional sheets if necessary.
McElvain Oil & Gas Properties Inc. proposes to spud in the San Jose formation and drill a 12 1/4" surface hole to 300 '. 9 5/8" casing will be run and cemented to surface. WOC 12 hours. Test casing and BOPE to 600 psig for 15 minutes. Drill an 8 3/4" hole to 3806' with fresh water mud. No abnormal pressure or poisonous gas is anticipated. Adequate weight material will be on location to control any unforeseen gas or water flows. Log well from Intermediate TD to base of surface casing. Run and cement 7" casing to surface. WOC 12 hours. Pressure test casing and EOPE to 1500 psig for 15 minutes. Drill a 6 1/4" hole to TD using air or air mist. Log well from TD to intermediate casing shoe. Run a 4 1/2" liner from TD to overlap into intermediate casing a minimum of 120'. Cement liner with adequate volume to circulate to liner top. Move out drilling rig and move in completion unit. Test casing to 3000 psig. Run cased hole correlation logs. Selectively perforate the Mesa Verde and stimulate with a fresh water base system.

23 I hereby certify that the information given above is true and complete to the best of my knowledge and belief.

Signature:

Printed Name: R. E. Fielder

Title: Agent

Date: March 10, 1999

Phone: (505) 325 - 5220

OIL CONSERVATION DIVISION

Approved by:

Title:

Approval Date:

Conditions of Approval:

Attached ☐

Expiration Date:

JUL - 1 1999

JUL - 1 2000

District I
PO Box 1980, Hobbs, NM 88241-1980

State of New Mexico
Energy, Minerals & Natural Resources Department

Form C-102
Revised February 21, 1994

District II
PO Drawer DD, Artesia, NM 88211-0719

Instructions on back
Submit to Appropriate District Office
State Lease - 4 Copies
Fee Lease - 3 Copies

District III
1000 Rio Brazos Rd., Aztec, NM 87410

OIL CONSERVATION DIVISION
PO Box 2088
Santa Fe, NM 87504-2088

District IV
PO Box 2088, Santa Fe, NM 87504-2088

☐ AMENDED REPORT

WELL LOCATION AND ACREAGE DEDICATION PLAT

| | | | |
|--------------------------------------|---|---------------------|---------------------------------|
| *API Number 30-039-26201 | | *Pool Code 72319 | *Pool Name Blanco Mesa Verde |
| *Property Code 23816-24727 | *Property Name ELK COM | | *Well Number 10-8 |
| *GRID No. 22044 | *Operator Name McELVAIN OIL & GAS PROPERTIES | | *Elevation 7403' |

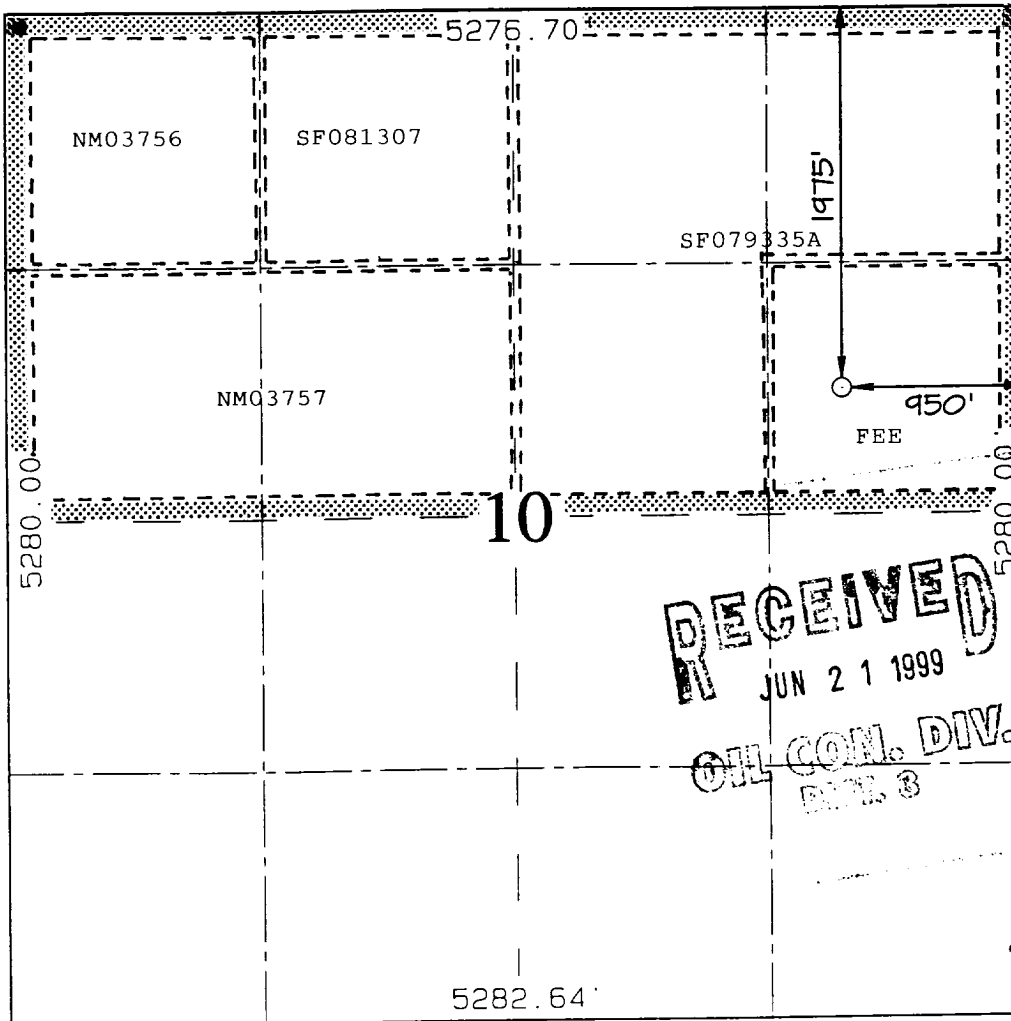
¹⁰ Surface Location

| | | | | | | | | | |
|--------------------|---------------|-----------------|-------------|---------|-----------------------|---------------------------|----------------------|------------------------|----------------------|
| UL or lot no. H | Section 10 | Township 25N | Range 2W | Lot Idn | Feet from the 1975 | North/South line NORTH | Feet from the 950 | East/West line EAST | County RIO ARriba |
|--------------------|---------------|-----------------|-------------|---------|-----------------------|---------------------------|----------------------|------------------------|----------------------|

¹¹ Bottom Hole Location If Different From Surface

| | | | | | | | | | |
|---|---------|------------------------------------|-------|---------------------------------------|---------------|-------------------------|---------------|----------------|--------|
| UL or lot no. | Section | Township | Range | Lot Idn | Feet from the | North/South line | Feet from the | East/West line | County |
| ¹² Dedicated Acres 320.00 | | ¹³ Joint or Infill Y | | ¹⁴ Consolidation Code C | | ¹⁵ Order No. | | | |

NO ALLOWABLE WILL BE ASSIGNED TO THIS COMPLETION UNTIL ALL INTERESTS HAVE BEEN CONSOLIDATED
OR A NON-STANDARD UNIT HAS BEEN APPROVED BY THE DIVISION



¹⁷ OPERATOR CERTIFICATION

I hereby certify that the information contained herein is true and complete to the best of my knowledge and belief

R. E. Fielder
Signature
R. E. Fielder
Printed Name
Agent
Title
March 10, 1999
Date

¹⁸ SURVEYOR CERTIFICATION

I hereby certify that the well location shown on this plat was plotted from field notes of actual surveys made by me or under my supervision and that the same is true and correct to the best of my belief.

MARCH 5, 1999
Date of Survey
Signature and Seal of Professional Surveyor
NEALE C. EDWARDS
NEW MEXICO
6857
Certificate Number 6857

McELVAIN OIL & GAS PROPERTIES BLK COM #10-8
1975' FNL, 950' FEL, SECTION 10, T25N, R2W, NMPM
RIO ARriba COUNTY, NM, GROUND ELEVATION: 7403'

