

**UNITED STATES  
DEPARTMENT OF THE INTERIOR  
BUREAU OF LAND MANAGEMENT**

**APPLICATION FOR PERMIT TO DRILL OR DEEPEN**

## 1a. TYPE OF WORK

DRILL ☒DEEPEN ☐

## b. TYPE OF WELL

OIL  
WELL ☐GAS  
WELL ☐OTHER ☐SINGLE  
ZONE ☐MULTIPLE  
ZONE ☐

## 2. NAME OF OPERATOR

McElvain Oil &amp; Gas Properties Inc.

## 3. ADDRESS AND TELEPHONE NO.

1050 17th Street, Suite 710, Denver, CO 80265 (505) 325 - 5220

## 4. LOCATION OF WELL (Report location clearly and in accordance with any State requirements.)

At surface

800' FNL - 815' FWL

At proposed prod. zone  
same

## 14. DISTANCE IN MILES AND DIRECTION FROM NEAREST TOWN OR POST OFFICE\*

Eight miles northeast of Lindrith, NM

## 15. DISTANCE FROM PROPOSED\*

LOCATION TO NEAREST  
PROPERTY OR LEASE LINE, FT.

(Also to nearest drg. unit line, if any)

505'

## 16. NO. OF ACRES IN LEASE

120

17. NO. OF ACRES ASSIGNED  
TO THIS WELL

320

## 18. DISTANCE FROM PROPOSED LOCATION\*

TO NEAREST WELL, DRILLING, COMPLETED,  
OR APPLIED FOR, ON THIS LEASE, FT.

38'

## 19. PROPOSED DEPTH

6175'

## 20. ROTARY OR CABLE TOOLS

Rotary

## 21. ELEVATIONS (Show whether DF, RT, GR, etc.)

7443' GL

## 22. APPROX. DATE WORK WILL START\*

January 1, 2000

## 23.

## PROPOSED CASING AND CEMENTING PROGRAM

SIZE OF HOLE	GRADE, SIZE OF CASING	WEIGHT PER FOOT	SETTING DEPTH	QUANTITY OF CEMENT
12.250"	9.625", J/K55	36	600'	384 cf to circulate to surface
8.750"	7.000", J/K55	20	3875'	918.6 cf to circulate to surface
6.250"	4.500", J/K55	10.5	6175'	433 cf to circulate to liner top

McElvain Oil & Gas Properties Inc. proposes to spud in the San Jose Formation and drill a 12 1/4" surface hole to 600'. 9 5/8" casing will be run and cemented to surface. WOC 12 hours. Test casing and BOPE to 600 psig for 15 minutes. Drill an 8 3/4" hole to 3875' with fresh water mud. No abnormal pressures or poisonous gases are anticipated. Adequate weight material will be on location to control any unforeseen gas or water flows. Run and cement 7" casing to surface. WOC 12 hours. Pressure test casing and BOPE to 1500 psig for 15 minutes. Drill a 6 1/4" hole to TD using air/air mist. Log well from TD to intermediate casing shoe. Run a 4 1/2" liner from TD to overlap into intermediate casing a minimum of 120'. Cement liner with adequate volume to circulate to liner top. Move out drilling rig and move in completion unit. Test casing to 3000 psig. Run cased hole correlation logs. Selectively perforate the Mesa Verde Formation and stimulate with a fresh water based system.

IN ABOVE SPACE DESCRIBE PROPOSED PROGRAM: If proposal is to deepen, give data on present productive zone and proposed new productive zone. If proposal is to drill or deepen directionally, give pertinent data on subsurface locations and measured true vertical depths. Give blowout preventer program, if any.

## 24.

SIGNED

*P. E. Fields*

TITLE Agent

DATE December 17, 1999

(This space for Federal or State office use)

PERMIT NO.

APPROVAL DATE

Application approval does not warrant or certify that the applicant holds legal or equitable title to those rights in the subject lease which would entitle the applicant to conduct operations thereon.  
CONDITIONS OF APPROVAL, IF ANY:

APPROVED BY

*Steve Fisher*

TITLE

*Acting Assistant Field  
Office Manager*

DATE

12-21-99

District II  
PO Drawer DD, Artesia, NM 88211-0719

District III  
1000 Rio Brazos Rd., Aztec, NM 87410

District IV  
PO Box 2068, Santa Fe, NM 87504-2088

OIL CONSERVATION DIVISION  
PO Box 2088  
Santa Fe, NM 87504-2088

Submit to Appropriate District Office  
State Lease - 4 Copies  
Fee Lease - 3 Copies

☐ AMENDED REPORT

## WELL LOCATION AND ACREAGE DEDICATION PLAT

'API Number 30-039-26284	'Pool Code 72319	'Pool Name Blanco Mesa Verde
'Property Code 24727	'Property Name ELK COM 10	'Well Number 1A
'CGRID No. 22044	'Operator Name McELVAIN OIL & GAS PROPERTIES	'Elevation 7443'

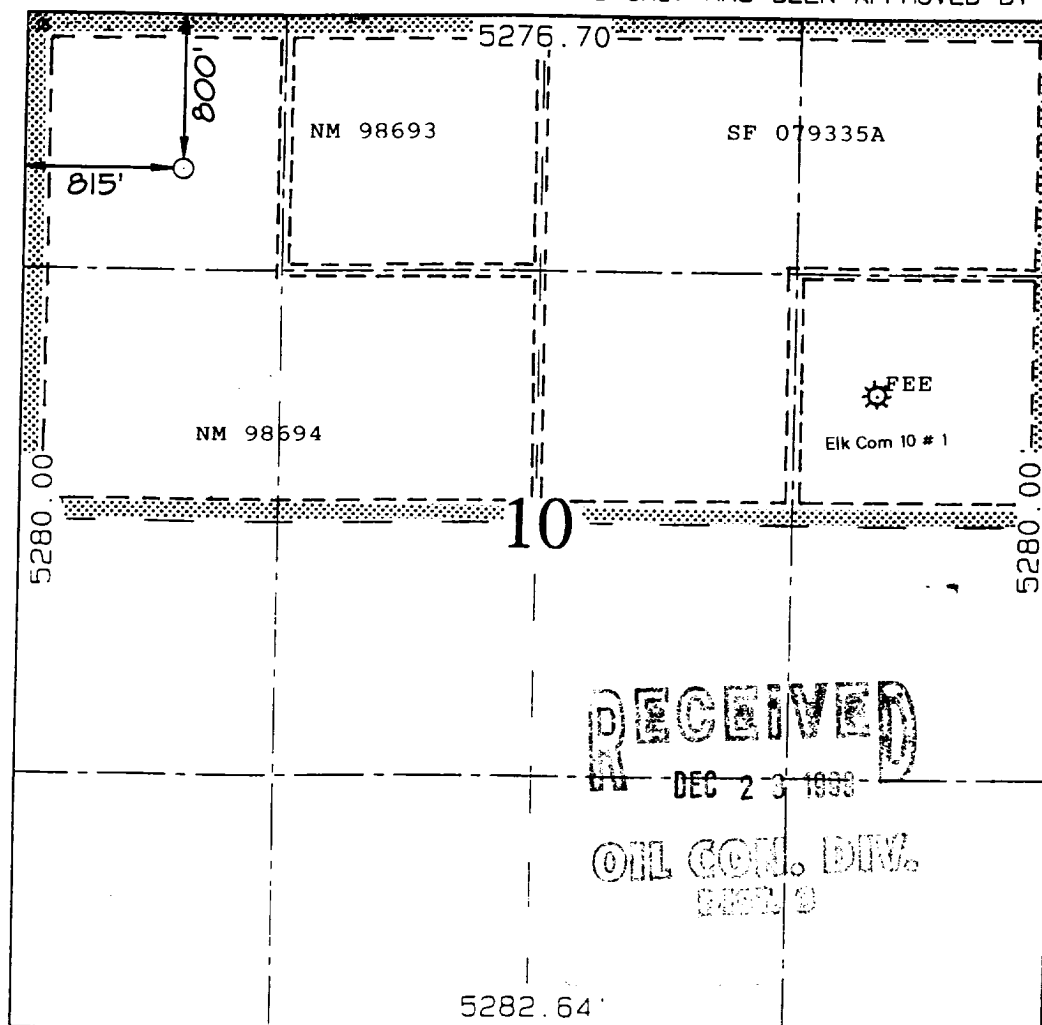
<sup>10</sup> Surface Location

UL or lot no.	Section	Township	Range	Lot Idn	Feet from the	North/South line	Feet from the	East/West line	County
D	10	25N	2W		800	NORTH	815	WEST	RIO ARRIBA

<sup>11</sup>Bottom Hole Location If Different From Surface

UL or Lot No.	Section	Township	Range	Lot or	Feet from the	North/South line	Feet from the	East/West line	County
<sup>12</sup> Dedicated Acres		<sup>13</sup> Joint or Infill		<sup>14</sup> Consolidation Code		<sup>15</sup> Order No.			
320		Y		C					

NO ALLOWABLE WILL BE ASSIGNED TO THIS COMPLETION UNTIL ALL INTERESTS HAVE BEEN CONSOLIDATED  
OR A NON-STANDARD UNIT HAS BEEN APPROVED BY THE DIVISION



17 OPERATOR CERTIFICATION

I hereby certify that the information contained herein is true and complete to the best of my knowledge and belief.

R. E. Zula

Signature

R.E. Fielder

Printed Name \_\_\_\_\_

Agent

Title

Date \_\_\_\_\_

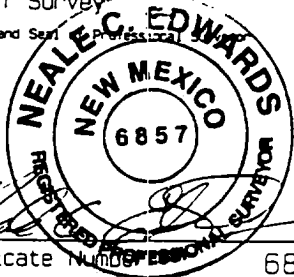
<sup>18</sup> SURVEYOR CERTIFICATION

I hereby certify that the well location shown on this plat was plotted from field notes of actual surveys made by me or under my supervision, and that the same is true and correct to the best of my belief.

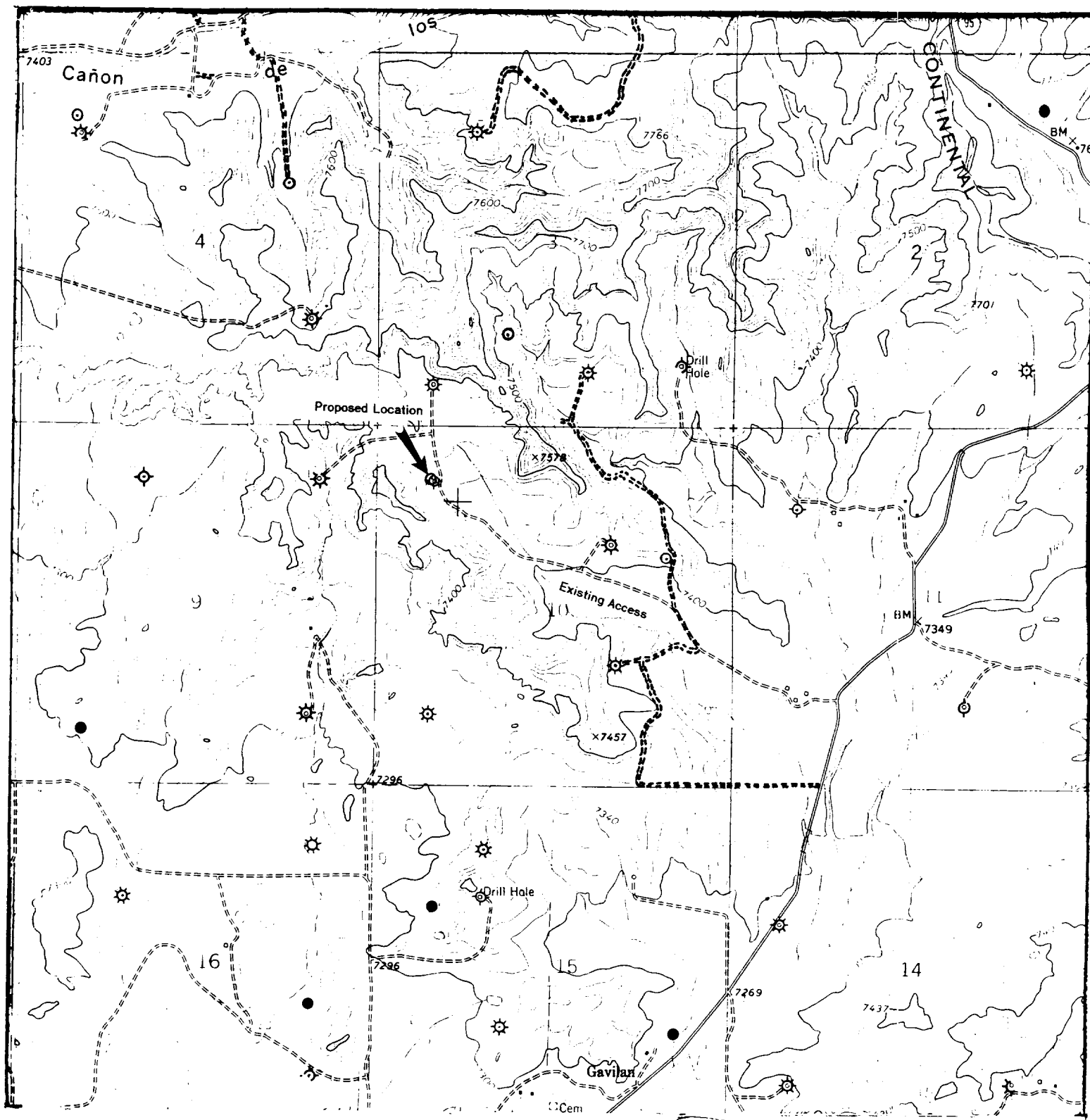
OCTOBER 22, 1999

Date of Survey \_\_\_\_\_

Signature and Seal of Professional \_\_\_\_\_



Certificate Number 6857



**Vicinity Map**  
 McElvain Oil & Gas Properties, Inc.  
 Elk Com 10 No. 1A  
 800' FNL - 815' FWL  
 Section 10, T 25 N, R 2 W, NMPM  
 Rio Arriba Co., New Mexico