

**UNITED STATES
DEPARTMENT OF THE INTERIOR
BUREAU OF LAND MANAGEMENT**

5. LEASE DESIGNATION AND SERIAL NO.

NM01397

APPLICATION FOR PERMIT TO DRILL OR DEEPEN

6. IF INDIAN, ALLOTTEE OR TRIBE NAME

1a. TYPE OF WORK

DRILL ☒**DEEPEN** ☐

7. UNIT AGREEMENT NAME

b. TYPE OF WELL

OIL
WELL ☐GAS
WELL ☐OTHER ☐SINGLE
ZONE ☐MULTIPLE
ZONE ☐

8. FARM OR LEASE NAME, WELL NO.

Elk Com No. 1A

2. NAME OF OPERATOR

McElvain Oil & Gas Properties Inc.

9. API WELL NO.

30.039 26403

3. ADDRESS AND TELEPHONE NO.

1050 17th Street, Suite 710, Denver, CO 80265 (303) 893 - 0933

10. FIELD AND POOL, OR WILDCAT

Blanco Mesa Verde

4. LOCATION OF WELL (Report location clearly and in accordance with any State requirements.)

At surface

1310 ' FSL - 1910 ' FWL, Section 3, T25N, R2W, NMPM

At proposed prod. zone

Same

11. SEC., T., R., M., OR BLK
AND SURVEY OR AREA

Section 3, T25N, R2W, NMPM

14. DISTANCE IN MILES AND DIRECTION FROM NEAREST TOWN OR POST OFFICE*

9 miles northeast of Lindrith, NM

12. COUNTY

Rio Arriba

13. STATE

NM

15. DISTANCE FROM PROPOSED*
LOCATION TO NEAREST
PROPERTY OR LEASE LINE, FT.

728 '

16. NO. OF ACRES IN LEASE

160

17. NO. OF ACRES ASSIGNED
TO THIS WELL

W 320.97

18. DISTANCE FROM PROPOSED LOCATION*
TO NEAREST WELL, DRILLING, COMPLETED,
OR APPLIED FOR, ON THIS LEASE, FT.

1300 '

19. PROPOSED DEPTH

6172 '

20. ROTARY OR CABLE TOOLS

Rotary

21. ELEVATIONS (Show whether DF, RT, GR, etc.)

7473 ' GL

22. APPROX. DATE WORK WILL START*

February, 2000

23.

PROPOSED CASING AND CEMENTING PROGRAM

SIZE OF HOLE	GRADE, SIZE OF CASING	WEIGHT PER FOOT	SETTING DEPTH	QUANTITY OF CEMENT
12.250 "	9.625 ", J-55	36	300 '	194.7 cf to circ. to surface
8.750 "	7.000 ", J-55	20	3891 '	918.6 cf to circ. to surface, two stage
6.250 "	4.500 ", J-55	10.5	6172 '	418.8 cf to circ. to liner top

McElvain Oil & Gas will spud in the San Jose formation. Will drill a 12 1/4 " hole to 300 ' using a fresh water mud system. Run and cement surface casing with adequate volume to circulate to surface. WOC 12 hours. Pressure test BOPE to 600 # / 15 mins. Drill an 8 3/4 " hole to 3891 ' using Mesa Verde produced water to mix a fresh water mud system. No abnormal pressures or poisonous gas is anticipated. Run and cement intermediate casing in two stages with adequate volume to circulate to surface. Pressure test BOPE to 1500 # / 15 mins. Drill a 6 1/4 " hole to TD using air or air / mist. Log well from TD to intermediate casing shoe. Pull GR to surface for correlation. Run and cement the production liner with adequate volume to circulate to the liner top. Move out drilling rig, move in completion unit. Run cased hole correlation logs. Pressure test casing to 3000 # / 30 Mins. Perforate and stimulate select Mesa Verde intervals using a 2 % KCl water based fluid. Install production facilities and gas gathering line.

Surface is Federal, BLM.

This APD includes a right of way for a 50 foot corridor along the access road for road construction and gas pipeline construction.

IN ABOVE SPACE DESCRIBE PROPOSED PROGRAM: If proposal is to deepen, give data on present productive zone and proposed new productive zone. If proposal is to drill or deepen directionally, give pertinent data on subsurface locations and measured true vertical depths. Give blowout preventer program, if any.

24.

SIGNED

R.E. Fitch

TITLE Agent

DATE January 29, 2000

(This space for Federal or State office use)

PERMIT NO.

APPROVAL DATE

Application approval does not warrant or certify that the applicant holds legal or equitable title to those rights in the subject lease which would entitle the applicant to conduct operations thereon

CONDITIONS OF APPROVAL, IF ANY: Attached to the Report

APPROVED BY

SW Anderson

TITLE

Asst Field Mgr

DATE

MAR 14 2000

not at chse

District I
PO Box 1980, Hobbs, NM 88241-1980

District II
PO Drawer DD, Artesia, NM 88211-0719

District III
1000 Rio Brazos Rd., Aztec, NM 87410

District IV
PO Box 2088, Santa Fe, NM 87504-2088

State of New Mexico
Energy, Minerals & Natural Resources Department

OIL CONSERVATION DIVISION
PO Box 2088
Santa Fe, NM 87504-2088

Form C-102
Revised February 21, 1994
Instructions on back
Submit to Appropriate District Office
State Lease - 4 Copies
Fee Lease - 3 Copies

☐ AMENDED REPORT

WELL LOCATION AND ACREAGE DEDICATION PLAT

*API Number 30-039-26403		*Pool Code 72319	*Pool Name Blanco Mesa Verde
*Property Code 6660	*Property Name ELK COM		*Well Number 1A
*CGRID No. 22044	*Operator Name McELVAIN OIL & GAS PROPERTIES		*Elevation 7473'

¹⁰ Surface Location

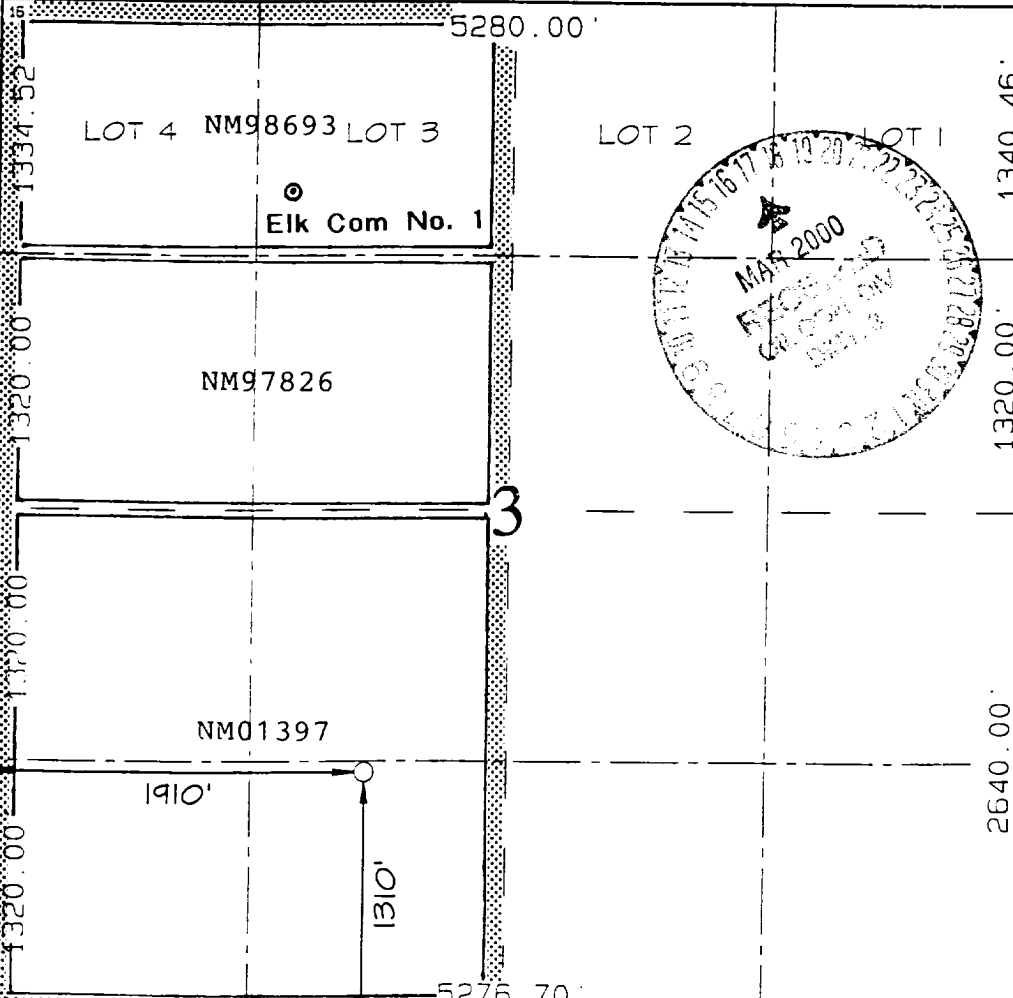

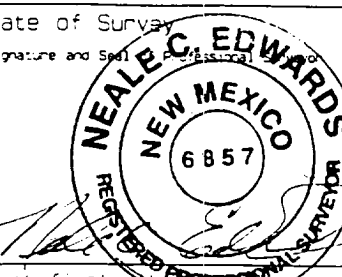
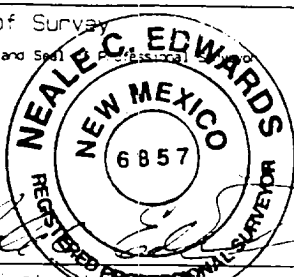
UL or lot no. N	Section 3	Township 25N	Range 2W	Lot Idn	Feet from the 1310	North/South line SOUTH	Feet from the 1910	East/West line WEST	County RIO ARriba
---------------------------	---------------------	------------------------	--------------------	---------	------------------------------	----------------------------------	------------------------------	-------------------------------	-----------------------------

¹¹ Bottom Hole Location If Different From Surface

UL or lot no.	Section	Township	Range	Lot Idn	Feet from the	North/South line	Feet from the	East/West line	County
---------------	---------	----------	-------	---------	---------------	------------------	---------------	----------------	--------

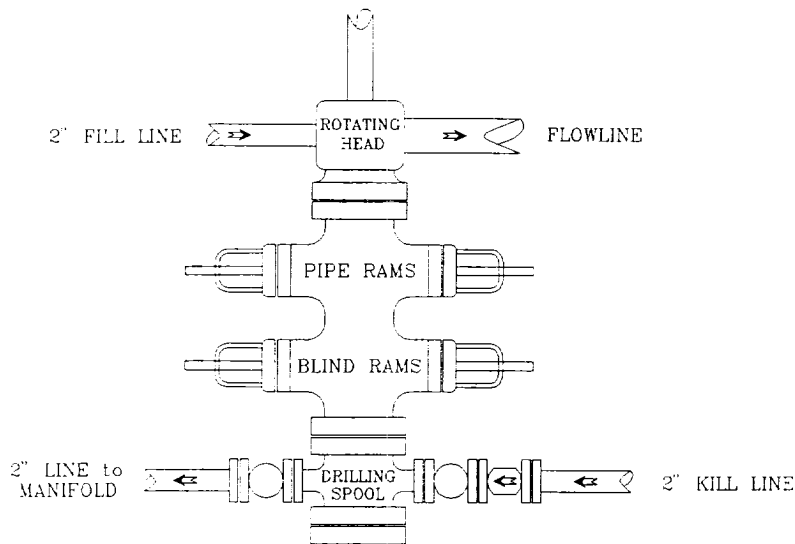
¹² Dedicated Acres 320.97	¹³ Joint or Infill Y	¹⁴ Consolidation Code C	¹⁵ Order No.
--	---	--	-------------------------

NO ALLOWABLE WILL BE ASSIGNED TO THIS COMPLETION UNTIL ALL INTERESTS HAVE BEEN CONSOLIDATED OR A NON-STANDARD UNIT HAS BEEN APPROVED BY THE DIVISION

		¹⁷ OPERATOR CERTIFICATION I hereby certify that the information contained herein is true and complete to the best of my knowledge and belief.  Signature R. E. Fielder Printed Name Agent Title January 29, 2000 Date
¹⁸ SURVEYOR CERTIFICATION I hereby certify that the well location shown on this plat was plotted from field notes of actual surveys made by me or under my supervision, and that the same is true and correct to the best of my belief. OCTOBER 28, 1999 Date of Survey  Signature and Seal  Certificate No. 6857		

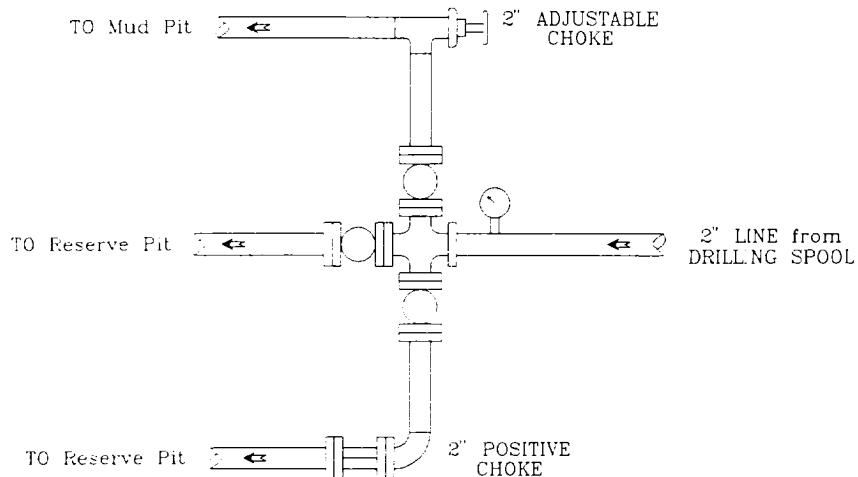
PRESSURE CONTROL

Wellhead Assembly



Preventer and Spools are to have a
6" Bore or larger and a 2000 PSI
or higher Pressure Rating

Choke Manifold



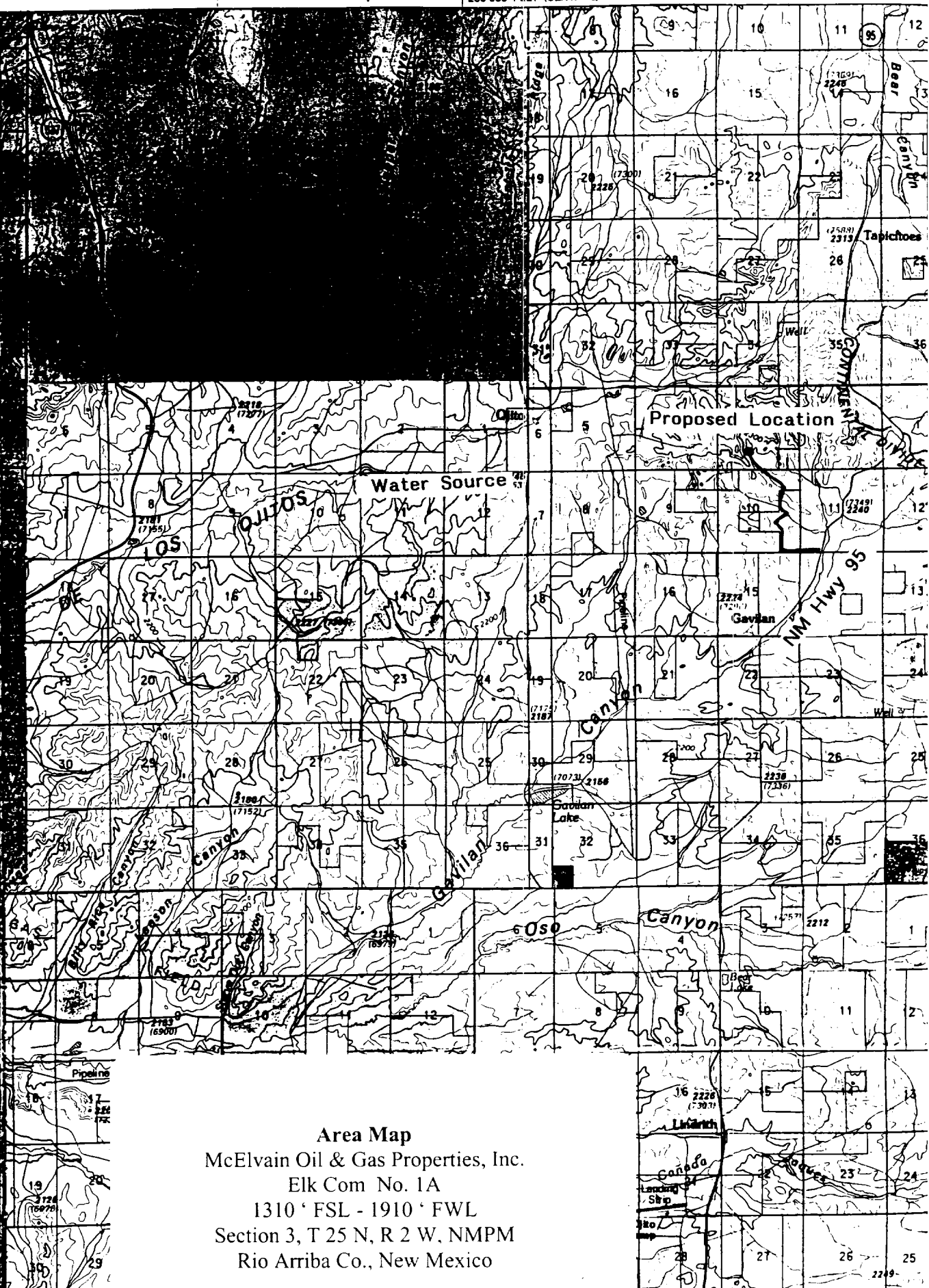
McElvain Oil & Gas Properties Inc.

Elk Com No. 1A

1310' FSL - 1910' FWL

Section 3, T25N, R2W, NMPM

Rio Arriba County, New Mexico



Area Map

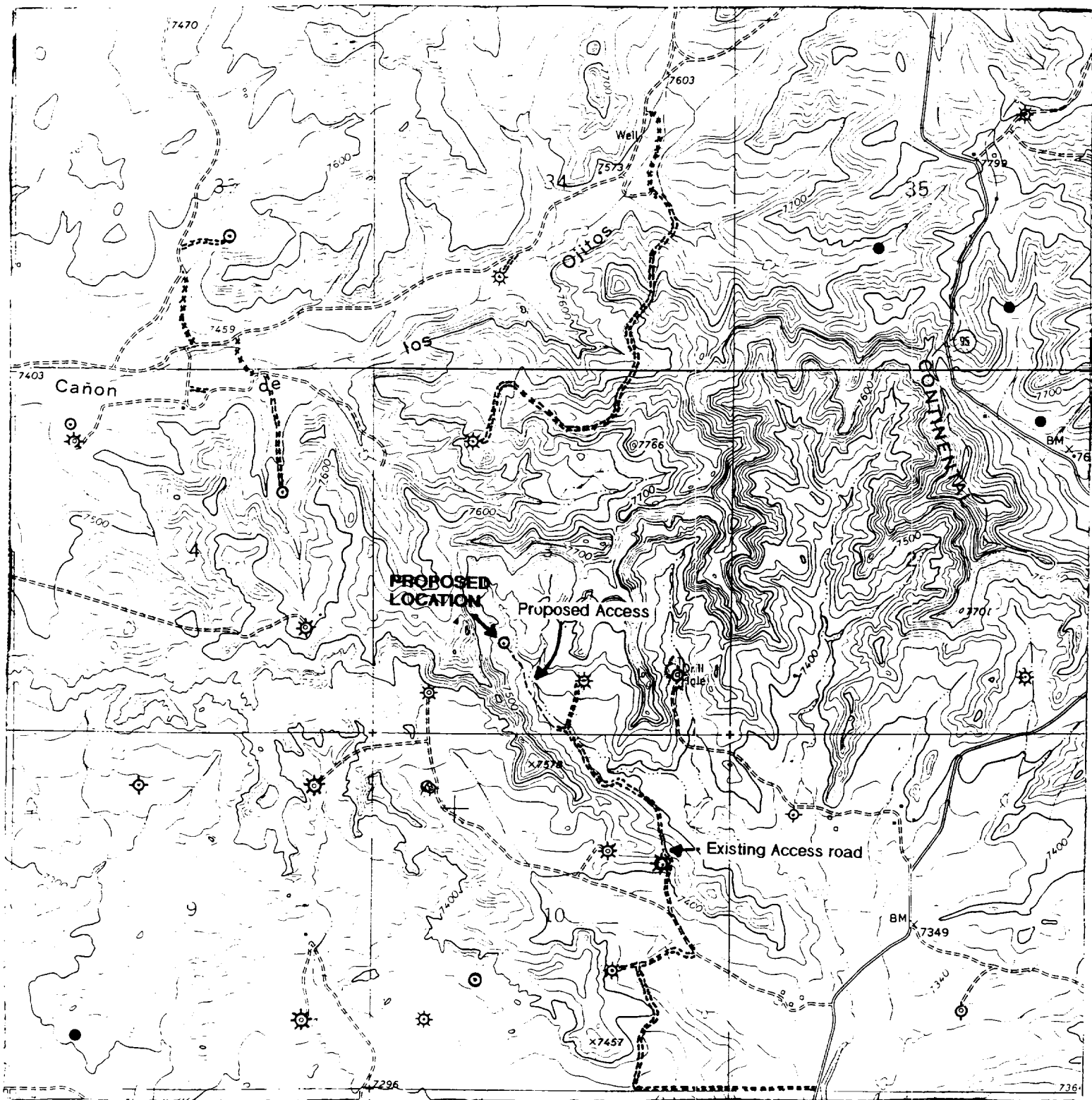
McElvain Oil & Gas Properties, Inc.

Elk Com No. 1A

1310' FSL - 1910' FWL

Section 3, T 25 N, R 2 W, NMPM

Rio Arriba Co., New Mexico



Vicinity Map
McElvain Oil & Gas Properties, Inc.
Elk Com No. 1A
1310' FSL - 1910' FWL
Section 3, T 25 N, R 2 W, NMPM
Rio Arriba Co., New Mexico