

OIL CONSERVATION DIVISION

P. O. BOX 2088

Form C-107

Revised 10-1-78

STATE OF NEW MEXICO
ENERGY AND MINERALS DEPARTMENT

SANTA FE, NEW MEXICO 87501

All distances must be from the outer boundaries of the Section.

Operator NORTHWEST PIPELINE CORPORATION			Lease RUCKER LAKE		Well No. 2
Unit Letter K	Section 24	Township 25N	Range 2W	County Rio Arriba	
Actual Footage Location of Well: 1150 feet from the South line and 1520 feet from the West line					
Ground Level Elev: 7382	Producing Formation Gallup / Entrada		Pool Wildcat Entrada Gavilan Gallup Extension		Dedicated Acreage: 160 Gal/40 Entrada

1. Outline the acreage dedicated to the subject well by colored pencil or hachure marks on the plat below.
2. If more than one lease is dedicated to the well, outline each and identify the ownership thereof (both as to working interest and royalty).
3. If more than one lease of different ownership is dedicated to the well, have the interests of all owners been consolidated by communitization, unitization, force-pooling, etc?

☐ Yes ☐ No If answer is "yes," type of consolidation _____

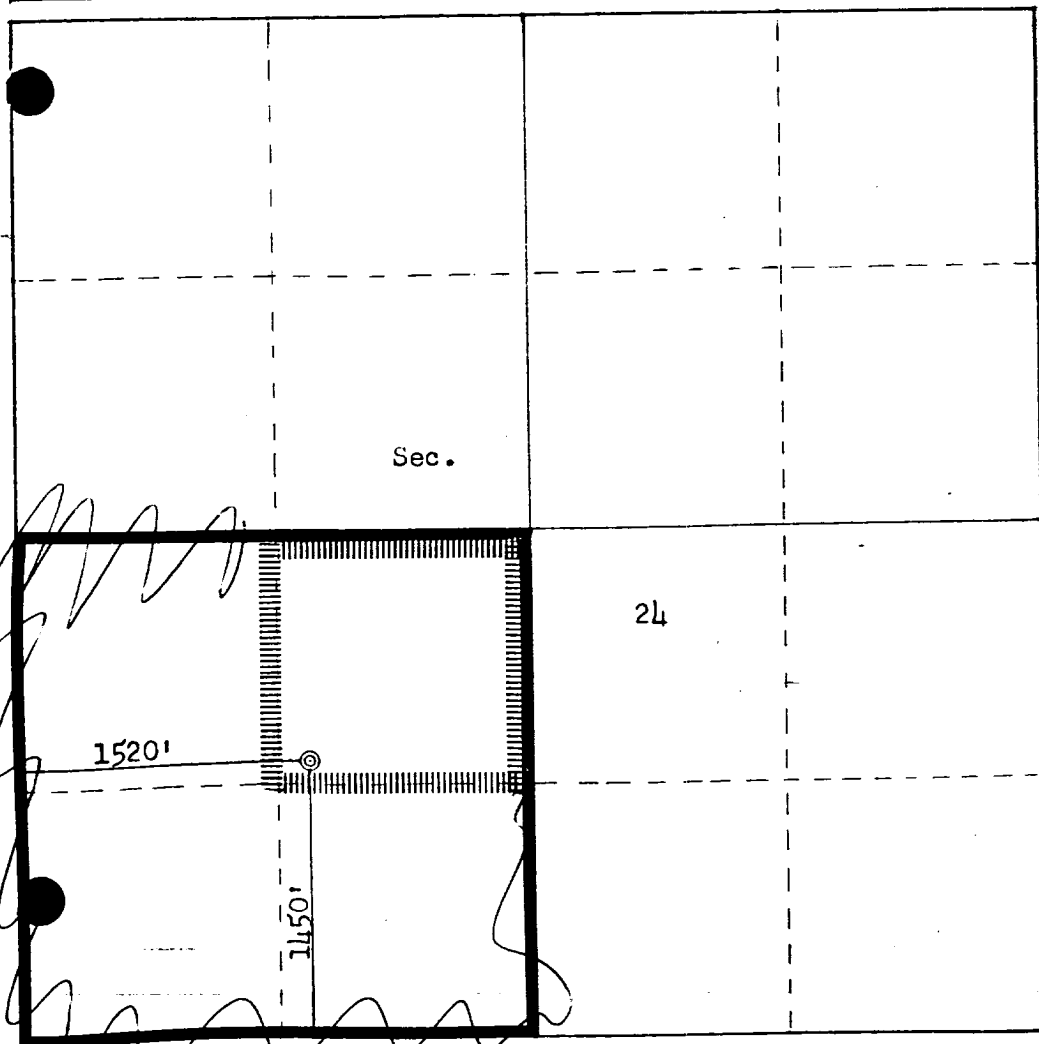
SEP 26 1983

If answer is "no," list the owners and tract descriptions which have actually been consolidated. (Use reverse side of this form if necessary.) _____

OIL CON. DIV.]

DIST. 3

No allowable will be assigned to the well until all interests have been consolidated (by communitization, unitization, forced-pooling, or otherwise) or until a non-standard unit, eliminating such interests, has been approved by the Commission.



CERTIFICATION

I hereby certify that the information contained herein is true and complete to the best of my knowledge and belief.

Paul C. Thompson

Name

Paul C. Thompson

Position

Sr. Drilling Engineer

Company

Northwest Pipeline Corp

Date

April 22, 1983

I hereby certify that the well location shown on this plat was plotted from field notes of actual surveys made by me or under my supervision, and that the same is true and correct to the best of my knowledge and belief.

Date Surveyed

April 21, 1983

Registered Professional Engineer
and Land Surveyor

Fred B. Kerr Jr.

Certificate No. 3950

3950

NMOC