

UNITED STATES
DEPARTMENT OF THE INTERIOR
GEOLOGICAL SURVEY

APPLICATION FOR PERMIT TO DRILL, DEEPEN, OR PLUG BACK

1a. TYPE OF WORK

DRILL ☒DEEPEN ☐PLUG BACK ☐

b. TYPE OF WELL

OIL
WELL ☒GAS
WELL ☐

OTHER

SINGLE
ZONE ☒MULTIPLE
ZONE ☐

2. NAME OF OPERATOR

Palmer Oil & Gas Company

3. ADDRESS OF OPERATOR

P. O. Box 2564, Billings, Montana 59103

4. LOCATION OF WELL (Report location clearly and in accordance with any State requirements.)*

At surface

NE $\frac{1}{4}$ SW $\frac{1}{4}$, 1980' FSL & 1980' FWLAt proposed prod. zone
same

14. DISTANCE IN MILES AND DIRECTION FROM NEAREST TOWN OR POST OFFICE*

20 miles South of Farmington

15. DISTANCE FROM PROPOSED*

LOCATION TO NEAREST
PROPERTY OR LEASE LINE, FT.
(Also to nearest drlg. unit line, if any)

660'

16. NO. OF ACRES IN LEASE

160

17. NO. OF ACRES ASSIGNED

TO THIS WELL

80

18. DISTANCE FROM PROPOSED LOCATION*
TO NEAREST WELL, DRILLING, COMPLETED,
OR APPLIED FOR, ON THIS LEASE, FT.1st well on
lease

19. PROPOSED DEPTH

5400

20. ROTARY OR CABLE TOOLS

Rotary

21. ELEVATIONS (Show whether DF, RT, GR, etc.)

6702 GR

22. APPROX. DATE WORK WILL START*

January 20, 1977

23.

PROPOSED CASING AND CEMENTING PROGRAM

SIZE OF HOLE	SIZE OF CASING	WEIGHT PER FOOT	SETTING DEPTH	QUANTITY OF CEMENT
12-1/4"	8-5/8"	20# or 24#	200'	150 sx
7-7/8"	4-1/2"	10.5	5400'	200 sx

This prospect is a 5400' GALLUP TEST on the southeast end of the Bisti Lower Gallup Field. The well will be drilled, open hole logs run, and each prospective zone penetrated will be evaluated. If productive, 4-1/2" casing will be set through the pay and cemented with 200 sacks cement. The hole will be mud drilled using a gel chemical system. A hydraulically operated BOP will be utilized from beneath surface pipe to total depth. It will be tested to 1500 psi before drilling out and checked for proper operation daily thereafter. The survey plat will be forwarded when completed by our surveyor. Commencement date will be on or before January 20, 1977. Completion of drilling will be 15 days from commencement. The geological name of the surface formation is Ojo Alamo.

IN ABOVE SPACE DESCRIBE PROPOSED PROGRAM: If proposal is to deepen or plug back, give data on present productive zone and proposed new productive zone. If proposal is to drill or deepen directionally, give pertinent data on subsurface locations and measured and true vertical depths. Give blowout preventer program, if any.

24.

SIGNED

David W. Ellidge

TITLE

Petroleum Engineer

DATE

December 9, 1976

(This space for Federal or State office use)

PERMIT NO.

APPROVAL DATE

APPROVED BY

TITLE

DATE

CONDITIONS OF APPROVAL, IF ANY:

OK

*See Instructions On Reverse Side

**NEW MEXICO OIL CONSERVATION COMMISSION
WELL LOCATION AND ACERAGE DEDICATION PLAT**

OK

All distances must be from the outer boundaries of the Section

Operator PALMER OIL COMPANY			Lease NAVAJO ALLOTMENT #011437		Well No. 23-11
Unit Letter K	Section 23	Township 24 NORTH	Range 9 WEST	County SAN JUAN	

Actual Footage Location of Well:
1980 feet from the **SOUTH** line and **1880** feet from the **WEST** line

Ground Level Elev. 6702	Producing Formation <i>San Juan</i>	Pool <i>Biste extension</i>	Dedicated Acreage: 80 Acres
-----------------------------------	--	--------------------------------	---------------------------------------

1. Outline the acreage dedicated to the subject well by colored pencil or hachure marks on the plat below.
2. If more than one lease is dedicated to the well, outline each and identify the ownership thereof (both as to working interest and royalty),
3. If more than one lease of different ownership is dedicated to the well, have the interests of all owners been consolidated by communitization, unitization, force-pooling, etc?
☐ Yes ☐ No If answer is "yes," type of consolidation _____

If answer is "no," list the owners and tract descriptions which have actually consolidated. (Use reverse side of this form if necessary.) _____

No allowable will be assigned to the well until all interests have been consolidated (by communitization, unitization, forced-pooling, or otherwise) or until a non standard unit, eliminating such interests, has been approved by the Commission.

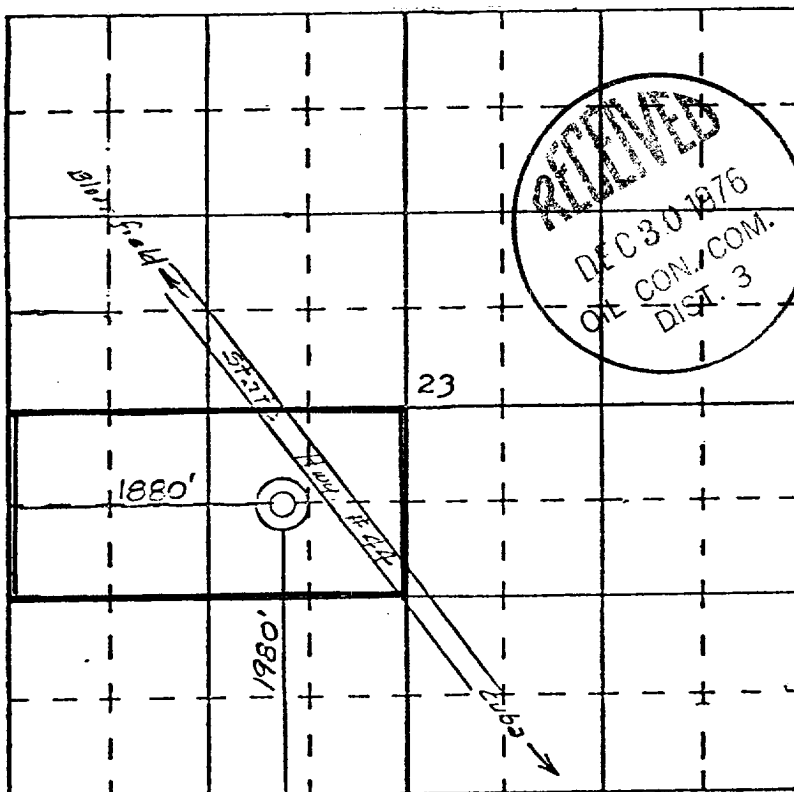
CERTIFICATION

I hereby certify that the information contained herein is true and complete to the best of my knowledge and belief.

L. C. Campbell
 Name **L. C. Campbell**
 Position **Land Manager**
Palmer Oil & Gas Company
 Company
January 4, 1977
 Date

I hereby certify that the well location shown on this plat was plotted from field notes of actual surveys made by me or under my supervision and that the same is true and correct to the best of my knowledge and belief.

21 December 1976
 Date Surveyed
James P. Leese
 Registered Professional Engineer
 and/or Land Surveyor **James P. Leese**



N

1463

Certificate No.

