

UNITED STATES  
DEPARTMENT OF THE INTERIOR  
GEOLOGICAL SURVEY

## APPLICATION FOR PERMIT TO DRILL, DEEPEN, OR PLUG BACK

## 1a. TYPE OF WORK

DRILL ☒DEEPEN ☐PLUG BACK ☐

## b. TYPE OF WELL

OIL  
WELL ☐GAS  
WELL ☒

OTHER

SINGLE  
ZONE ☒MULTIPLE  
ZONE ☐

## 2. NAME OF OPERATOR

Kirby Exploration Company

## 3. ADDRESS OF OPERATOR

P.O. Box 1745, Houston, Texas 77001

## 4. LOCATION OF WELL (Report location clearly and in accordance with any State requirements.)\*

At surface

790' FNL &amp; 1850' FEL

At proposed prod. zone

Same

## 14. DISTANCE IN MILES AND DIRECTION FROM NEAREST TOWN OR POST OFFICE\*

1 mile east of Nageezi, New Mexico

## 15. DISTANCE FROM PROPOSED\*

LOCATION TO NEAREST  
PROPERTY OR LEASE LINE, FT.  
(Also to nearest drlg. unit line, if any)

## 16. NO. OF ACRES IN LEASE

643

17. NO. OF ACRES ASSIGNED  
TO THIS WELL

160

## 18. DISTANCE FROM PROPOSED LOCATION\*

TO NEAREST WELL, DRILLING, COMPLETED,  
OR APPLIED FOR, ON THIS LEASE, FT.

## 19. PROPOSED DEPTH

1900'

## 20. ROTARY OR CABLE TOOLS

Rotary

## 21. ELEVATIONS (Show whether DF, RT, GR, etc.)

6901 GL

## 22. APPROX. DATE WORK WILL START\*

May 5, 1977

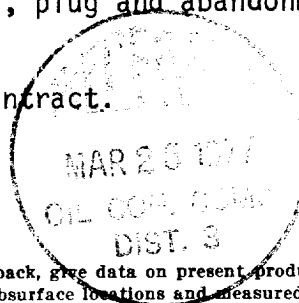
## 23.

## PROPOSED CASING AND CEMENTING PROGRAM

SIZE OF HOLE	SIZE OF CASING	WEIGHT PER FOOT	SETTING DEPTH	QUANTITY OF CEMENT
12 1/4	8 5/8	20#	90'	50 sacks class "B" + 2% CaCl <sub>2</sub>
6 3/4	4 1/2	9.5#	1900'	200 sacks class "B"

Move in rotary tools. Drill 12 1/4 hole to 90 feet. Set 90 feet of new 8 5/8" casing and cement as above. Wait on cement 12 hours. Install 6" 900 series blow out preventers and test. Drill 6 3/4" hole to 1900 feet. No abnormal pressure or temperature is expected. Mud system will be gel-chem weighing 9-9.2# per gallon, W. L. 8-10 c.c. and viscosity of 30-40 seconds per quart. Open hole logging will consist of IES, FDC-CNL and GR Caliper logs. If commercial, 4 1/2" casing will be run and cemented as above. If non-commercial, plug and abandonment will follow U.S.G.S. specifications.

Gas under this lease is not committed to a contract.



MAR 24 1977

IN ABOVE SPACE DESCRIBE PROPOSED PROGRAM: If proposal is to deepen or plug back, give data on present productive zone and proposed new productive zone. If proposal is to drill or deepen directionally, give pertinent data on subsurface locations and measured and true vertical depths. Give blowout preventer program, if any.

## 24.

SIGNED

  
John Alexander

TITLE

Agent

DATE

3-23-77

(This space for Federal or State office use)

PERMIT NO.

APPROVAL DATE

APPROVED BY

TITLE

DATE

CONDITIONS OF APPROVAL, IF ANY:

**NEW MEXICO OIL CONSERVATION COMMISSION  
WELL LOCATION AND ACREAGE DEDICATION PLAT**

Form C-102  
Supersedes C-128  
Effective 1-1-65

All distances must be from the outer boundaries of the Section.

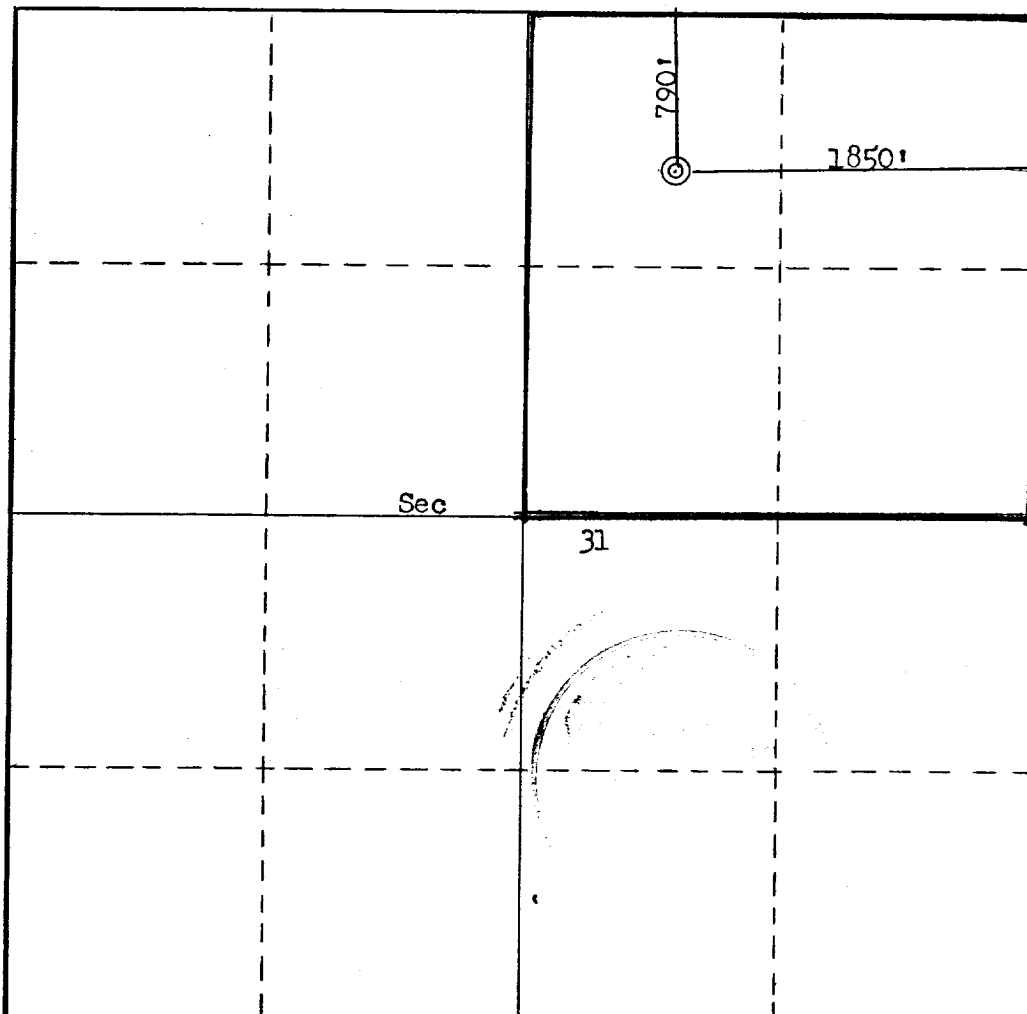
Operator <b>Kirby Exploration Company</b>			Lease <b>Federal 31</b>		Well No. <b>1</b>
Unit Letter <b>B</b>	Section <b>31</b>	Township <b>24N</b>	Range <b>8W</b>	County <b>San Juan</b>	
Actual Footage Location of Well: <b>790</b> feet from the <b>North</b> line and <b>1850</b> feet from the <b>East</b> line					
Ground Level Elev. <b>6901</b>	Producing Formation <b>Pictured Cliff</b>		Pool <b>Wildcat</b>	Dedicated Acreage: <b>160</b> Acres	

1. Outline the acreage dedicated to the subject well by colored pencil or hachure marks on the plat below.
2. If more than one lease is dedicated to the well, outline each and identify the ownership thereof (both as to working interest and royalty).
3. If more than one lease of different ownership is dedicated to the well, have the interests of all owners been consolidated by communitization, unitization, force-pooling, etc?

☐ Yes   ☐ No   If answer is "yes," type of consolidation \_\_\_\_\_

If answer is "no," list the owners and tract descriptions which have actually been consolidated. (Use reverse side of this form if necessary.) \_\_\_\_\_

No allowable will be assigned to the well until all interests have been consolidated (by communitization, unitization, forced-pooling, or otherwise) or until a non-standard unit, eliminating such interests, has been approved by the Commission.



**CERTIFICATION**

*I hereby certify that the information contained herein is true and complete to the best of my knowledge and belief.*

**John Alexander**

Name

**Agent**

Position

**Kirby Exploration Company**

Company

**3-23-77**

Date

*John Alexander*

*I hereby certify that the well location shown on this plat was plotted from field notes of actual surveys made by me or under my supervision, and that the same is true and correct to the best of my knowledge and belief.*

Date Surveyed

**March 9, 1977**

Registered Professional Engineer  
and/or Land Surveyor

*Fred B. Kerr Jr.*  
**Fred B. Kerr Jr.**

Certificate No.

**3950**

