

UNITED STATES  
DEPARTMENT OF THE INTERIOR  
GEOLOGICAL SURVEY

APPLICATION FOR PERMIT TO DRILL, DEEPEN, OR PLUG BACK

1a. TYPE OF WORK  
 DRILL ☒ DEEPEN ☐ PLUG BACK ☐

b. TYPE OF WELL  
 OIL WELL ☒ GAS WELL ☐ OTHER ☐ SINGLE ZONE ☐ MULTIPLE ZONE ☐

2. NAME OF OPERATOR  
 Dugan Production Corp.

3. ADDRESS OF OPERATOR  
 P. O. Box 234, Farmington, NM 87401

4. LOCATION OF WELL (Report location clearly and in accordance with any State requirements.)  
 At surface 1550' FSL - 1190' FWL  
 At proposed prod. zone

14. DISTANCE IN MILES AND DIRECTION FROM NEAREST TOWN OR POST OFFICE\*  
 8 miles north of Nageezi, NM

15. DISTANCE FROM PROPOSED\* LOCATION TO NEAREST PROPERTY OR LEASE LINE, FT. (Also to nearest drig. unit line, if any)  
 16. NO. OF ACRES IN LEASE 160  
 17. NO. OF ACRES ASSIGNED TO THIS WELL 160

18. DISTANCE FROM PROPOSED LOCATION\* TO NEAREST WELL, DRILLING, COMPLETED, OR APPLIED FOR, ON THIS LEASE, FT. None  
 19. PROPOSED DEPTH 6350'

20. ROTARY OR CABLE TOOLS Rotary

21. ELEVATIONS (Show whether DF, RT, GR, etc.)  
 6695' GR

22. APPROX. DATE WORK WILL START\*  
 3-10-78

PROPOSED CASING AND CEMENTING PROGRAM

SIZE OF HOLE	SIZE OF CASING	WEIGHT PER FOOT	SETTING DEPTH	QUANTITY OF CEMENT
12-1/4"	8-5/8"	24#	200'	140
7-7/8"	4-1/2"	10.5#	6350'	1500 cu ft. in 2 stages

Plan to drill well with mud to test Gallup thru Dakota Fm.

If productive, plan to set csg thru Dakota Fm, selectively perforate, frac cleanout after frac, run tubing and complete well.

Plan to use 10" hydraulic double gate BOP furnished by drilling contractor while drilling.

Plan to use 6" manual double gate BOP while completing.

NMERB Requirement: Gas dedicated to Northwest Pipeline Corp.

IN ABOVE SPACE DESCRIBE PROPOSED PROGRAM: If proposal is to deepen or plug back, give data on present productive zone and proposed new productive zone. If proposal is to drill or deepen directionally, give pertinent data on subsurface locations and measured and true vertical depths. Give blowout preventer program, if any.

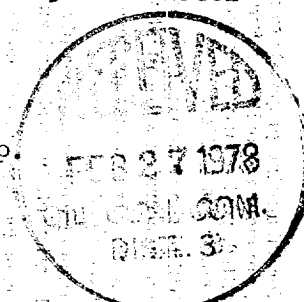
24. SIGNED Richard Tully TITLE Landman DATE 2-23-78  
 (This space for Federal or State office use)

PERMIT NO. \_\_\_\_\_ APPROVAL DATE \_\_\_\_\_

APPROVED BY \_\_\_\_\_ TITLE \_\_\_\_\_ DATE \_\_\_\_\_  
 CONDITIONS OF APPROVAL, IF ANY:

*OK*

\*See Instructions On Reverse Side



NEW MEXICO OIL CONSERVATION COMMISSION  
WELL LOCATION AND ACREAGE DEDICATION PLAT

Form C-102  
Supersedes C-128  
Effective 1-1-65

All distances must be from the outer boundaries of the Section.

Operator <b>Dugan Production Corporation</b>			Lease <b>Blanco Wash</b>			Well No. <b>5</b>
Unit Letter <b>L</b>	Section <b>1</b>	Township <b>24 North</b>	Range <b>9 West</b>	County <b>San Juan</b>		
Actual Footage Location of Well: <b>1550</b> feet from the <b>South</b> line and <b>1190</b> feet from the <b>West</b> line						
Ground Level Elev. <b>6695</b>	Producing Formation <b>Gallup</b>		Pool <b>Undesignated</b>	Dedicated Acreage: <b>160</b> Acres		

1. Outline the acreage dedicated to the subject well by colored pencil or hachure marks on the plat below.
2. If more than one lease is dedicated to the well, outline each and identify the ownership thereof (both as to working interest and royalty).
3. If more than one lease of different ownership is dedicated to the well, have the interests of all owners been consolidated by communitization, unitization, force-pooling, etc?

☐ Yes ☐ No If answer is "yes," type of consolidation \_\_\_\_\_

If answer is "no," list the owners and tract descriptions which have actually been consolidated (Use reverse side of this form if necessary.) \_\_\_\_\_

No allowable will be assigned to the well until all interests have been consolidated (by communitization, unitization, forced-pooling, or otherwise) or until a non-standard unit, eliminating such interests, has been approved by the Commission.

CERTIFICATION

I hereby certify that the information contained herein is true and complete to the best of my knowledge and belief.

*Richard Tully*

Name  
**Richard Tully**

Position  
**Landman**

Company  
**Dugan Production Corp.**

Date  
**2-23-78**

I hereby certify that the well location shown on this plat was plotted from field notes of a land survey made by me or under my supervision, and that the same is true and correct to the best of my knowledge and belief.

REGISTERED LAND SURVEYOR  
Reg. No. **3602**  
**E.V. ECHOHAWK**  
NEW MEXICO

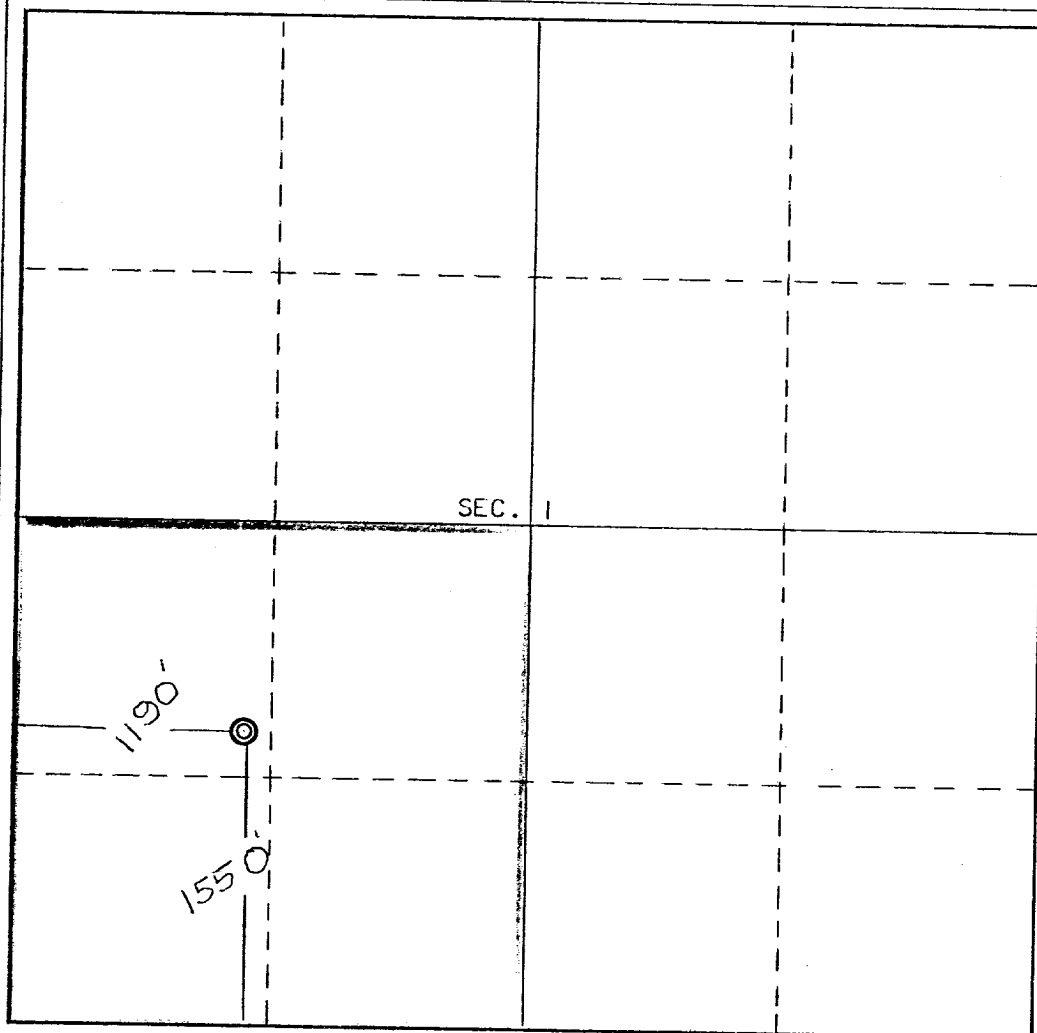
Date Surveyed  
**February 18, 1978**

Registered Professional Engineer and/or Land Surveyor

*E.V. Echhawk*

Certificate No. **3602**

**E.V. Echhawk LS**



0 330 660 990 1320 1650 1980 2310 2640 2000 1500 1000 500 0

