

UNITED STATES  
DEPARTMENT OF THE INTERIOR

## GEOLOGICAL SURVEY

## APPLICATION FOR PERMIT TO DRILL, DEEPEN, OR PLUG BACK

## 1a. TYPE OF WORK

DRILL ☒DEEPEN ☐PLUG BACK ☐

## b. TYPE OF WELL

OIL  
WELL ☒GAS  
WELL ☐

OTHER

SINGLE  
ZONE ☒MULTIPLE  
ZONE ☐

## 2. NAME OF OPERATOR

GULF OIL CORPORATION

## 3. ADDRESS OF OPERATOR

P.O. Box 670, Hobbs, NM 88240

## 4. LOCATION OF WELL (Report location clearly and in accordance with any State requirements.)\*

At surface

660' FNL &amp; 2080' FWL

At proposed prod. zone

## 5. LEASE DESIGNATION AND SERIAL NO.

NM-23073

## 6. IF INDIAN, ALLOTTEE OR TRIBE NAME

## 7. UNIT AGREEMENT NAME

## 8. FARM OR LEASE NAME

Southeast Bisti Federal

## 9. WELL NO.

1

## 10. FIELD AND POOL, OR WILDCAT

Wildcat Dakota

11. SEC., T., R., M., OR BLK.  
AND SURVEY OR AREA

Unit C

Sec. 3, T24N, R10W

## 12. COUNTY OR PARISH 13. STATE

San Juan

NM

## 14. DISTANCE IN MILES AND DIRECTION FROM NEAREST TOWN OR POST OFFICE\*

Approximately 24 miles south-southwest of Bloomfield, NM

## 15. DISTANCE FROM PROPOSED\*

LOCATION TO NEAREST

PROPERTY OR LEASE LINE, FT.

(Also to nearest drlg. unit line, if any)

## 18. DISTANCE FROM PROPOSED LOCATION\*

TO NEAREST WELL, DRILLING, COMPLETED,  
OR APPLIED FOR, ON THIS LEASE, FT.

## 16. NO. OF ACRES IN LEASE

322.02

17. NO. OF ACRES ASSIGNED  
TO THIS WELL

40

## 19. PROPOSED DEPTH

6500'

## 20. ROTARY OR CABLE TOOLS

Rotary

## 21. ELEVATIONS (Show whether DF, RT, GR, etc.)

6886' GL

## 22. APPROX. DATE WORK WILL START\*

December 20, 1979

## 23.

## PROPOSED CASING AND CEMENTING PROGRAM

SIZE OF HOLE	SIZE OF CASING	WEIGHT PER FOOT	SETTING DEPTH	QUANTITY OF CEMENT
12 1/2"	8-5/8"	24#	500'	400 sx - circulated
7-7/8"	5 1/2"	15.5#	6500'	To be determined by caliper survey

NOTE: See attached BOP Drawing #2

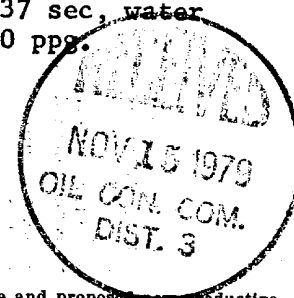
Circulating Media:

0' - 500'  
500' - 4000'  
4000' - 6500'

Fresh water spud mud

Fresh water

Fresh water gel with the following

properties: viscosity 32-37 sec, water  
loss 20-4cc, weight 8.5-9.0 ppg.

IN ABOVE SPACE DESCRIBE PROPOSED PROGRAM: If proposal is to deepen or plug back, give data on present productive zone and proposed productive zone. If proposal is to drill or deepen directionally, give pertinent data on subsurface locations and measured and true vertical depths. Give blowout preventer program, if any.

24.

SIGNED

R. C. Anderson

TITLE

Area Production Manager

DATE

11-5-79

(This space for Federal or State office use)

PERMIT NO.

APPROVAL DATE

APPROVED BY

TITLE

DATE

CONDITIONS OF APPROVAL, IF ANY:

ok 3/11/80

NMOCC

\*See Instructions On Reverse Side

NEW MEXICO OIL CONSERVATION COMMISSION  
WELL LOCATION AND ACREAGE DEDICATION PLAT

Form C-102  
Supersedes C-128  
Effective 1-1-65

All distances must be from the outer boundaries of the Section.

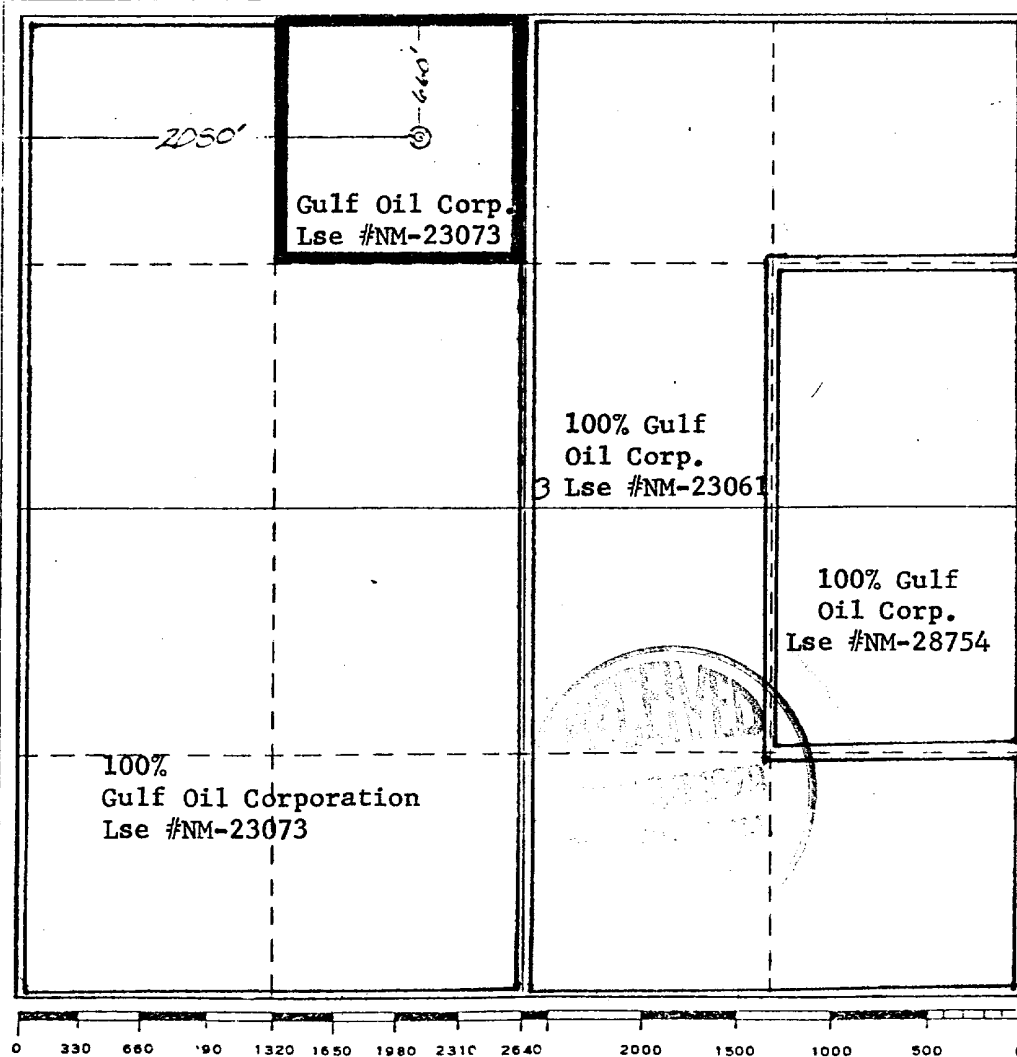
Operator <b>GULF OIL CORPORATION</b>			Lease <b>SOUTHEAST BISTI FEDERAL</b>		Well No. <b>1</b>
Unit Letter <b>C</b>	Section <b>3</b>	Township <b>24 NORTH</b>	Range <b>10 WEST</b>	County <b>SAN JUAN</b>	
Actual Footage Location of Well: <b>660</b> feet from the <b>NORTH</b> line and <b>2080</b> feet from the <b>WEST</b> line					
Ground Level Elev. <b>6886</b>	Producing Formation <b>Basin Dakota</b>		Pool <b>Wildcat</b>	Dedicated Acreage: <b>40</b> Acres	

1. Outline the acreage dedicated to the subject well by colored pencil or hachure marks on the plat below.
2. If more than one lease is dedicated to the well, outline each and identify the ownership thereof (both as to working interest and royalty).
3. If more than one lease of different ownership is dedicated to the well, have the interests of all owners been consolidated by communitization, unitization, force-pooling, etc?

☐ Yes ☐ No If answer is "yes," type of consolidation \_\_\_\_\_

If answer is "no," list the owners and tract descriptions which have actually been consolidated. (Use reverse side of this form if necessary.) \_\_\_\_\_

No allowable will be assigned to the well until all interests have been consolidated (by communitization, unitization, forced-pooling, or otherwise) or until a non-standard unit, eliminating such interests, has been approved by the Commission.



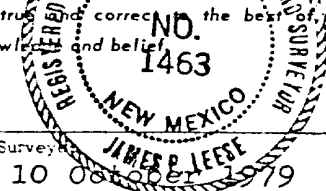
CERTIFICATION

I hereby certify that the information contained herein is true and complete to the best of my knowledge and belief.

*R. C. Anderson*

Name  
**R. C. Anderson**  
Position  
**Area Production Manager**  
Company  
**Gulf Oil Corporation**  
Date  
**11-5-79**

I hereby certify that the well location shown on this plat was obtained from field notes of actual survey made by me or under my supervision, and that the same is true and correct to the best of my knowledge and belief.



Date Surveyed  
**10 Oct 1979**  
Registered Professional Engineer and/or Land Surveyor  
*James P. Leese*  
**James P. Leese**  
Certificate No.  
**1463**

HUERFANO TR

Exhibit "B"

GULF OIL CORPORATION  
NEW Southeast Bisti Federal #1  
7.5 MINUTE NE 1/4 NW 1/4 Sec. 3, T24N, R10W  
San Juan County, New Mex.

4456 IV NE  
HUERFANO TRADING

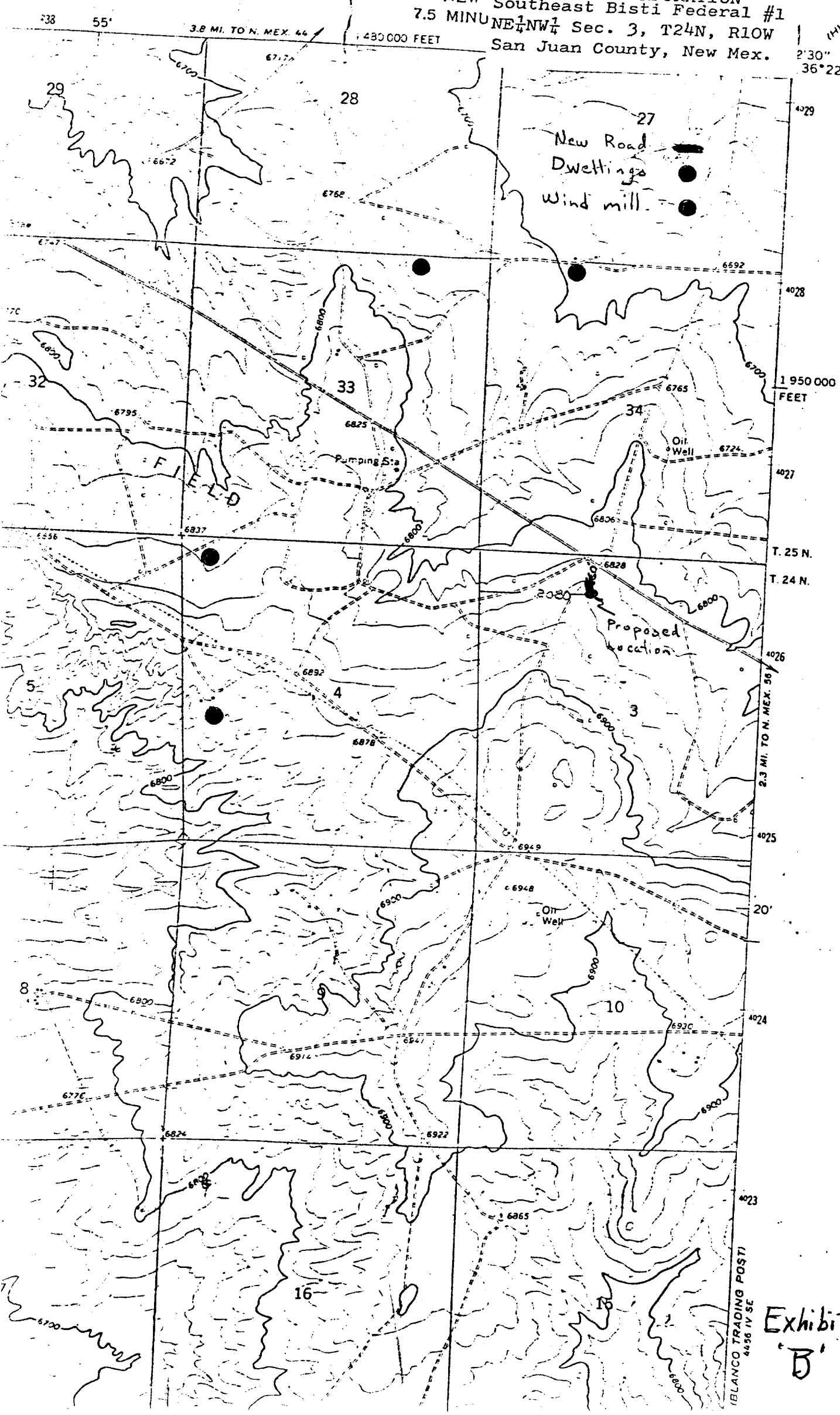


Exhibit  
'B'