

5 - USGS

1 - File

1 - TR

Form Approved.
Budget Bureau No. 42-R1424

UNITED STATES
DEPARTMENT OF THE INTERIOR
GEOLOGICAL SURVEY

SUNDRY NOTICES AND REPORTS ON WELLS

(Do not use this form for proposals to drill or to deepen or plug back to a different reservoir. Use Form 9-331-C for such proposals.)

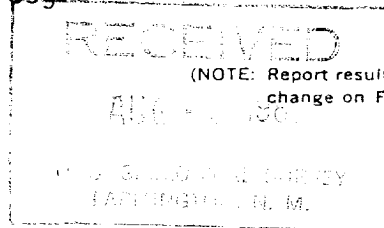
1. oil ☒ well ☒ gas well ☐ other
2. NAME OF OPERATOR
Dugan Production Corp.
3. ADDRESS OF OPERATOR
P O Box 208, Farmington, NM 87401
4. LOCATION OF WELL (REPORT LOCATION CLEARLY. See space 17 below.)
AT SURFACE: 1950' FWL - 660' FNL
AT TOP PROD. INTERVAL:
AT TOTAL DEPTH:
16. CHECK APPROPRIATE BOX TO INDICATE NATURE OF NOTICE, REPORT, OR OTHER DATA

REQUEST FOR APPROVAL TO:

- TEST WATER SHUT-OFF ☐
FRACTURE TREAT ☐
SHOOT OR ACIDIZE ☐
REPAIR WELL ☐
PULL OR ALTER CASING ☐
MULTIPLE COMPLETE ☐
CHANGE ZONES ☐
ABANDON* ☐
(other) ☐

SUBSEQUENT REPORT OF:

☒ 4 1/2" csg.



5. LEASE
NM 25433
6. IF INDIAN, ALLOTTEE OR TRIBE NAME
7. UNIT AGREEMENT NAME
8. FARM OR LEASE NAME
Sixteen G's
9. WELL NO.
#3
10. FIELD OR WILDCAT NAME
East Bisti Gallup Field
11. SEC., T., R., M., OR BLK. AND SURVEY OR AREA
Sec 7 T24N R9W
12. COUNTY OR PARISH
San Juan
13. STATE
NM
14. API NO.
15. ELEVATIONS (SHOW DF, KDB, AND WD)
6845' GL

17. DESCRIBE PROPOSED OR COMPLETED OPERATIONS (Clearly state all pertinent details, and give pertinent dates, including estimated date of starting any proposed work. If well is directionally drilled, give subsurface locations and measured and true vertical depths for all markers and zones pertinent to this work.)*

See reverse for report of 4 1/2" csg. and cement.

Subsurface Safety Valve: Manu. and Type _____ Set @ _____ Ft.

18. I hereby certify that the foregoing is true and correct

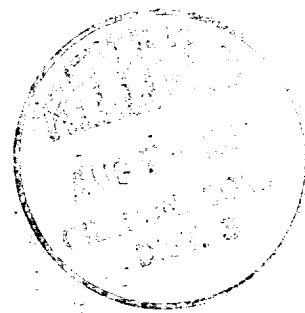
SIGNED Thomas A. Dugan TITLE Petroleum Engineer DATE 8-4-81

(This space for Federal or State office use)

APPROVED BY _____ TITLE _____ DATE _____
CONDITIONS OF APPROVAL, IF ANY

NMOCC

BY SM



7-19-81 6485' - Logging Wt. 9.2 Vis 70

- 4-1/4 hrs - trip
- 4-3/4 hrs - drlg.
- 1/4 hr - rig service
- 1/2 hr - short trip
- 2 hrs - circ.
- 1/2 hr - rig up loggers
- 1-1/4 hrs - wash out bridge
- 9-1/2 hrs - clean out 1052-1105
- 1/2 hr - clean out
- 1/2 hr - rig up loggers

7-20-81 6485' - logging

- 7-1/2 hrs - trip
- 11 hrs - logging
- 1/2 hr - clean out
- 5 hrs - circ.

Made one logging run to TD after running repeat - unable to get back to btm. T.I.H. w/ drill pipe and clean out and condition hole. P.O.H. and now logging.

7-21-81 Ran 165 jts. of 4½", 10.5# casing and set at 6492 ft., DV tool at 4503'. Put rig pump on and had good returns .

Rig up Howco and pumped 10 bbls of mud flush and mixed 250 sx Class B w/ 4% gel and ¼# flocele per sack followed by 150 sx of class B ¼# flocele per sk. Pumped plug down, dropped bomb and opened tool. Reciprocated pipe and had good returns throughout first stage. Put rig pump on and circulated for 2½ hrs.

Cemented 2nd stage - pumped in 10 bbls. mud flush and mixed 400 sx of 65-35 w/ 12% gel, ¼# flocele per sack and followed by 100 sx of class B with 4% gel and ¼# flocele per sk. Pumped down plug and closed tool. Set slips and cut off casing. Installed well cover.