

6 - USGS 1 - MF, Fmn 1 - MF, SEC
UNITED STATES
DEPARTMENT OF THE INTERIOR
GEOLOGICAL SURVEYForm approved. 1 - File
Budget Bureau No. 42-R1425.

30 - 045 - 24995

APPLICATION FOR PERMIT TO DRILL, DEEPEN, OR PLUG BACK

1a. TYPE OF WORK
DRILL ☒ DEEPEN ☐ PLUG BACK ☐

b. TYPE OF WELL
OIL WELL ☐ GAS WELL ☒ OTHER ☐ SINGLE ZONE ☒ MULTIPLE ZONE ☐

2. NAME OF OPERATOR
Dugan Production Corp.

3. ADDRESS OF OPERATOR
P O Box 208, Farmington, NM 87401

4. LOCATION OF WELL (Report location clearly and in accordance with any State requirements.)
At surface 790' FSL - 790' FEL
At proposed prod. zone

14. DISTANCE IN MILES AND DIRECTION FROM NEAREST TOWN OR POST OFFICE
4 miles south of Blanco Trading Post, NM

15. DISTANCE FROM PROPOSED* LOCATION TO NEAREST PROPERTY OR LEASE LINE, FT.
(Also to nearest drlg. unit line, if any) 790'

16. NO. OF ACRES IN LEASE
1279.83

17. NO. OF ACRES ASSIGNED TO THIS WELL
5/320

18. DISTANCE FROM PROPOSED LOCATION* TO NEAREST WELL, DRILLING COMPLETED, OR APPLIED FOR, ON THIS LEASE, FT.
2000'

19. PROPOSED DEPTH
16450'

20. ROTARY OR CABLE TOOLS
Rotary

21. ELEVATIONS (Show whether DF, RT, GR, etc.)
6942' GL

22. APPROX. DATE WORK WILL START
ASAP

23. PROPOSED CASING AND CEMENTING PROGRAM
This action is subject to administrative appeal pursuant to 30 CFR 280.

SIZE OF HOLE	SIZE OF CASING	WEIGHT PER FOOT	SETTING DEPTH	QUANTITY OF CEMENT
12-1/4"	8-5/8"	24#	225'	125 sx class B
7-7/8"	4-1/2"	10.5#	6300'	700 sx in 2 stages

Plan to drill w/ mud to Test Basin Dakota Formation. Plan to run IES & CDL logs to TD. If productive, will set 4 1/2" csg., cement w/ 2 stages, selectively perforate, frac, clean out, run 1 1/4" tubing and complete well.

Plan to use B.O.P. furnished by rig (10" - 3000 psi hydraulic)

Plan to use B.O.P. rental while completing (6" - 3000 psi double gate manual)

NMERB Requirement: GAS DEDICATED

IN ABOVE SPACE DESCRIBE PROPOSED PROGRAM: If proposal is to deepen or plug back, give data on present productive zone and proposed new productive zone. If proposal is to drill or deepen directionally, give pertinent data on subsurface locations and measured and true vertical depths. Give blowout preventer program, if any.

24. SIGNED Jerome P. McHugh Jr. TITLE Landman DATE 3-25-81
(This space for Federal or State office use)

PERMIT NO. _____ APPROVAL DATE _____
APPROVED BY _____ TITLE _____
CONDITIONS OF APPROVAL, IF ANY:

*See Instructions On Reverse Side

NMOCC

RECEIVED
APR 17 1981
OIL CON. COM.
DIST. 3

APPROVED
AS AMENDED
DATE

APR 15 1981
James F. Sims
DISTRICT ENGINEER

OIL CONSERVATION DIVISION

STATE OF NEW MEXICO
ENERGY AND MINERALS DEPARTMENTP. O. BOX 2088
SANTA FE, NEW MEXICO 87501Form C-102
Revised 10-1-78

All distances must be from the outer boundaries of the Section.

Operator Dugan Production Corporation			Lease M.F.		Well No. 2
Unit Letter P	Section 13	Township 24 North	Range 10 West	County San Juan	
Actual Footage Location of Well: 790 feet from the South line and 790 feet from the East line					
Ground Level Elev. 6942	Producing Formation Dakota		Pool Basin Dakota	Dedicated Acreage: 320 Acres	

1. Outline the acreage dedicated to the subject well by colored pencil or hachure marks on the plat below.
2. If more than one lease is dedicated to the well, outline each and identify the ownership thereof (both as to working interest and royalty).
3. If more than one lease of different ownership is dedicated to the well, have the interests of all owners been consolidated by communitization, unitization, force-pooling, etc?

☐ Yes ☐ No If answer is "yes," type of consolidation _____

If answer is "no," list the owners and tract descriptions which have actually been consolidated. (Use reverse side of this form if necessary.) _____

No allowable will be assigned to the well until all interests have been consolidated (by communitization, unitization, forced-pooling, or otherwise) or until a non-standard unit, eliminating such interests, has been approved by the Division.

Sec. 13		RECEIVED LAND SURVEY APR 17 1981 5979 COM. 3	
		790' 790'	

CERTIFICATION

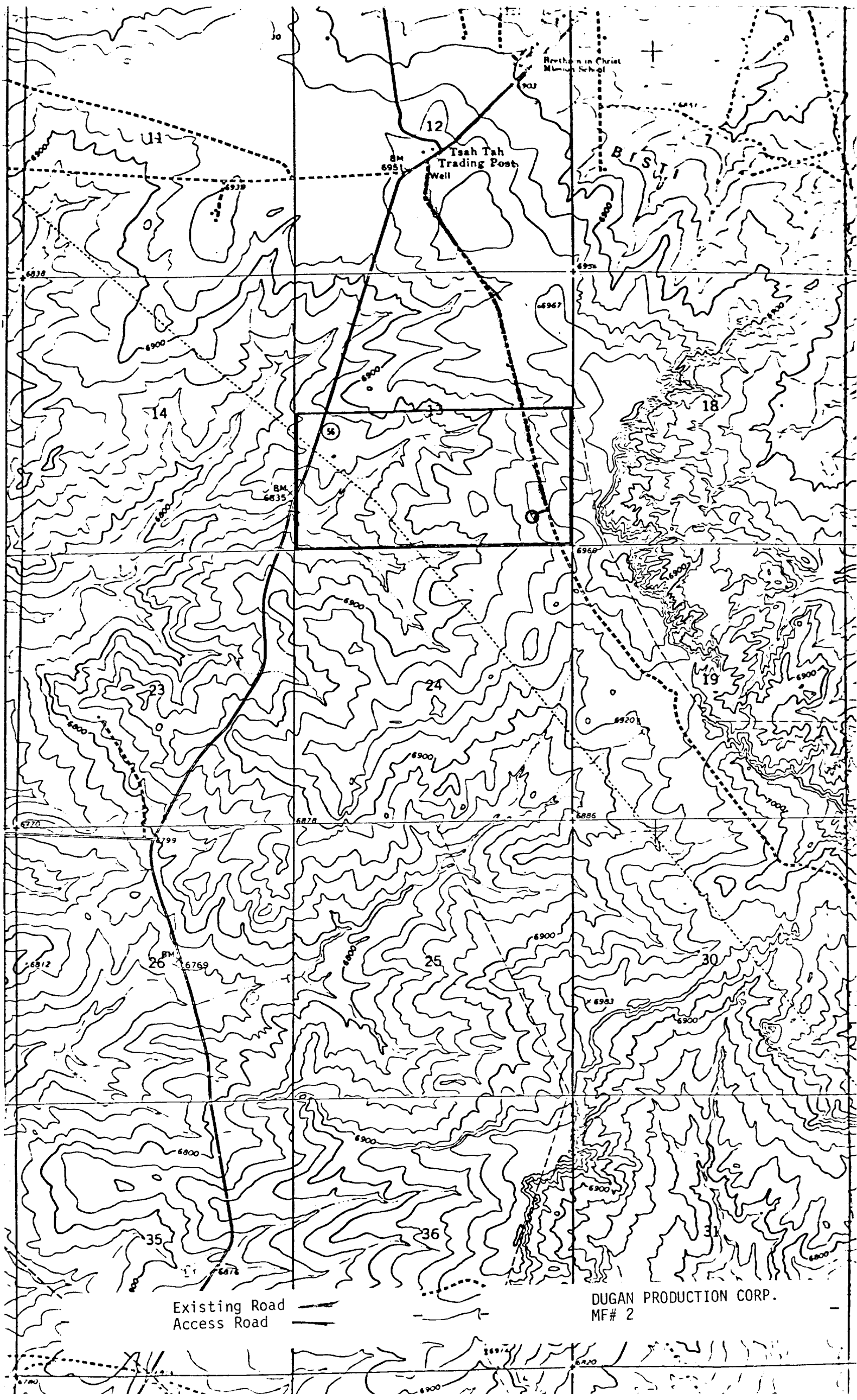
I hereby certify that the information contained herein is true and complete to the best of my knowledge and belief.

Name	Jerome P. McHugh Jr.
Position	Landman
Company	Dugan Production Corp.
Date	3-25-81

I hereby certify that the well location shown on the plat is the same as the field notes of actual surveys made by me or under my supervision and that the same is true and correct to the best of my knowledge and belief.

Date Surveyed	March 19, 1981
Registered Professional Engineer and/or Land Surveyor	

Edgar L. Risenhoover
Certificate No. 5979
Edgar L. Risenhoover, L.S.



Bethlehem in Christ
Mission School

12

Tsah Tah
Trading Post
Well

BM
6835

14

56

BM
6835

18

23

24

19

25

30

26

BM
6812

6769

35

36

Existing Road
Access Road

DUGAN PRODUCTION CORP.
MF# 2