

MARY ANNE 3
L 09 24N 09W
30-045-25050
1650/S 790/W
F



UNITED STATES
DEPARTMENT OF THE INTERIOR
GEOLOGICAL SURVEY

APPLICATION FOR PERMIT TO DRILL, DEEPEN, OR PLUG BACK

1a. TYPE OF WORK

DRILL ☒DEEPEN ☐PLUG BACK ☐

b. TYPE OF WELL

OIL
WELL ☐GAS
WELL ☒

OTHER

SINGLE
ZONE ☒MULTIPLE
ZONE ☐

2. NAME OF OPERATOR

Dugan Production Corp.

3. ADDRESS OF OPERATOR

P O Box 208, Farmington, NM 87401

4. LOCATION OF WELL (Report location clearly and in accordance with any State requirements.)*

At surface

790' FWL - 1650' FSL

At proposed prod. zone

14. DISTANCE IN MILES AND DIRECTION FROM NEAREST TOWN OR POST OFFICE*

3 miles S of Blanco Trading Post, NM

15. DISTANCE FROM PROPOSED*

LOCATION TO NEAREST
PROPERTY OR LEASE LINE, FT.
(Also to nearest drig. unit line, if any)

790'

18. DISTANCE FROM PROPOSED LOCATION*
TO NEAREST WELL, DRILLING, COMPLETED,
OR APPLIED FOR, ON THIS LEASE, FT.

800'

16. NO. OF ACRES IN LEASE

640

19. PROPOSED DEPTH

6350'

17. NO. OF ACRES ASSIGNED
TO THIS WELL

S/320

20. ROTARY OR CABLE TOOLS

Rotary

21. ELEVATIONS (Show whether DF, RT, GR, etc.)

6677' GL

22. APPROX. DATE WORK WILL START*

ASAP

23.

PROPOSED CASING AND CEMENTING PROGRAM

SIZE OF HOLE	SIZE OF CASING	WEIGHT PER FOOT	SETTING DEPTH	QUANTITY OF CEMENT
12-1/4"	8-5/8"	24#	225'	125 sx
7-7/8"	4-1/2"	10.5#	6350'	925 sx in 2 stages

This action is subject to administrative
approval pursuant to 30 CFR 290.

Plan to drill to test the Basin Dakota Formation. Plan to run IES log to TD.
If productive, plan to set 4 1/2" casing, cement in two stages, selectively
perforate, frac, clean out after frac, run tubing and complete well.

GAS DEDICATED

DRILLING OPERATIONS AUTHORIZED ARE
SUBJECT TO COMPLIANCE WITH ATTACHED
"GENERAL REQUIREMENTS"

IN ABOVE SPACE DESCRIBE PROPOSED PROGRAM: If proposal is to deepen or plug back, give data on present productive zone and proposed new productive zone. If proposal is to drill or deepen directionally, give pertinent data on subsurface locations and measured and true vertical depths. Give blowout preventer program, if any.

24.

SIGNED

Jerome P. McHugh Jr.

TITLE

Landman

DATE

5-6-81

(This space for Federal or State office use)

PERMIT NO.

APPROVAL DATE

APPROVED BY

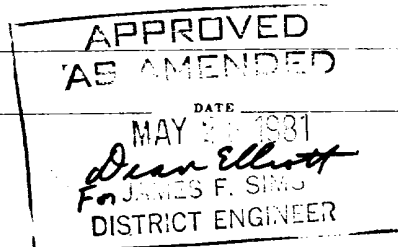
TITLE

CONDITIONS OF APPROVAL, IF ANY:

at 3-

NMOCC

*See Instructions On Reverse Side



OIL CONSERVATION DIVISION

STATE OF NEW MEXICO
ENERGY AND MINERALS DEPARTMENT

P. O. BOX 2088
SANTA FE, NEW MEXICO 87501

Form C-102
Revised 10-1-78

All distances must be from the outer boundaries of the Section.

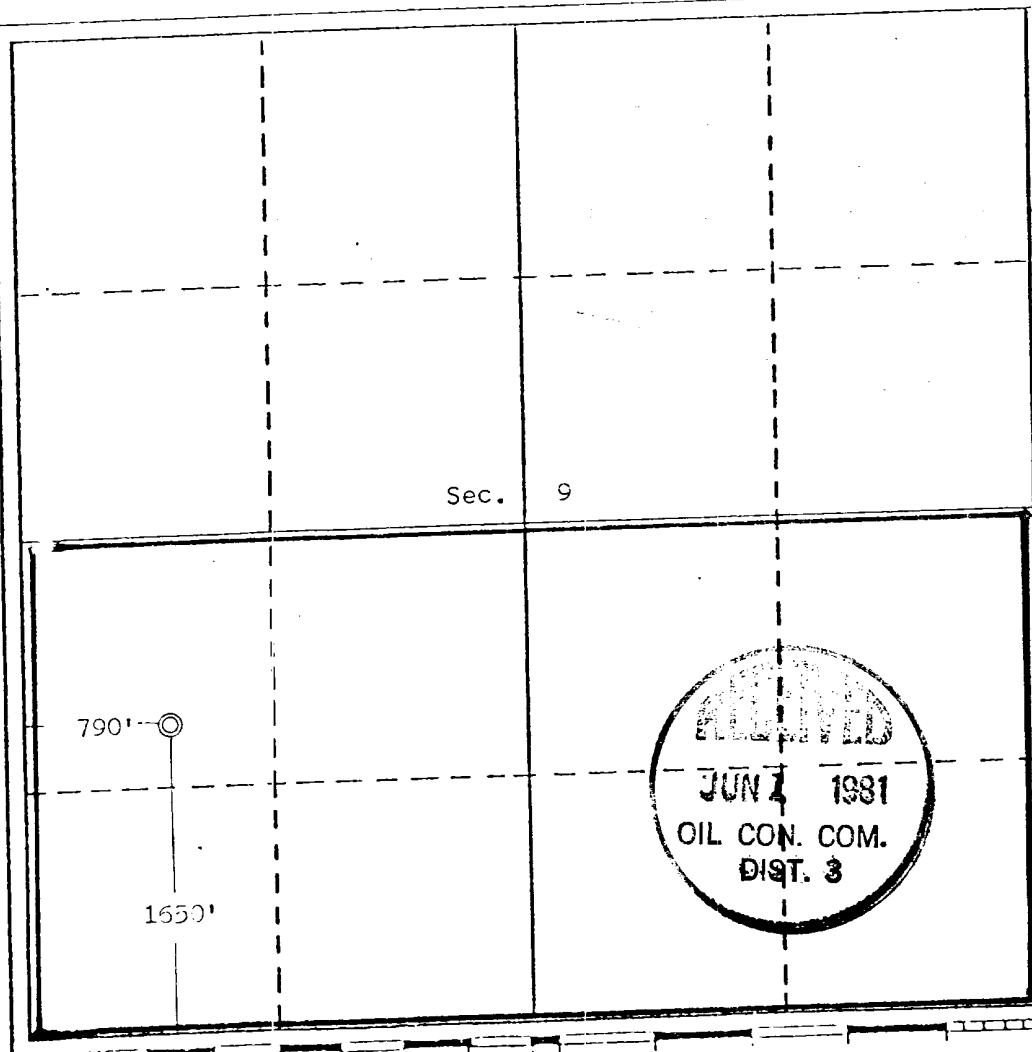
Operator Dugan Production Corporation			Lease Mary Ann		Well No. 3
Unit Letter L	Section 9	Township 24 North	Range 9 West	County San Juan	
Actual Footage Location of Well: 1630 feet from the South line and 790 feet from the West line					
Ground Level Elev. 6677	Producing Formation Dakota		Pool Basin Dakota	Dedicated Acreage: 320 Acres	

1. Outline the acreage dedicated to the subject well by colored pencil or hachure marks on the plat below.
2. If more than one lease is dedicated to the well, outline each and identify the ownership thereof (both as to working interest and royalty).
3. If more than one lease of different ownership is dedicated to the well, have the interests of all owners been consolidated by communitization, unitization, force-pooling, etc?

☐ Yes ☐ No If answer is "yes," type of consolidation _____

If answer is "no," list the owners and tract descriptions which have actually been consolidated. (Use reverse side of this form if necessary.) _____

No allowable will be assigned to the well until all interests have been consolidated (by communitization, unitization, forced-pooling, or otherwise) or until a non-standard unit, eliminating such interests, has been approved by the Division.



CERTIFICATION

I hereby certify that the information contained herein is true and complete to the best of my knowledge and belief.

Name Jerome P. McHugh Jr.
 Position Landman
 Company Dugan Production Corp.
 Date May 6, 1981

I hereby certify that the location shown on this plat was made by me or under my supervision, and that the same is true and correct to the best of my knowledge.

Date Surveyed April 16, 1981
 Registered Professional Engineer and/or Land Surveyor

Edgar L. Risenhoover
 Certificate No. 5979
 Edgar L. Risenhoover, L.S.

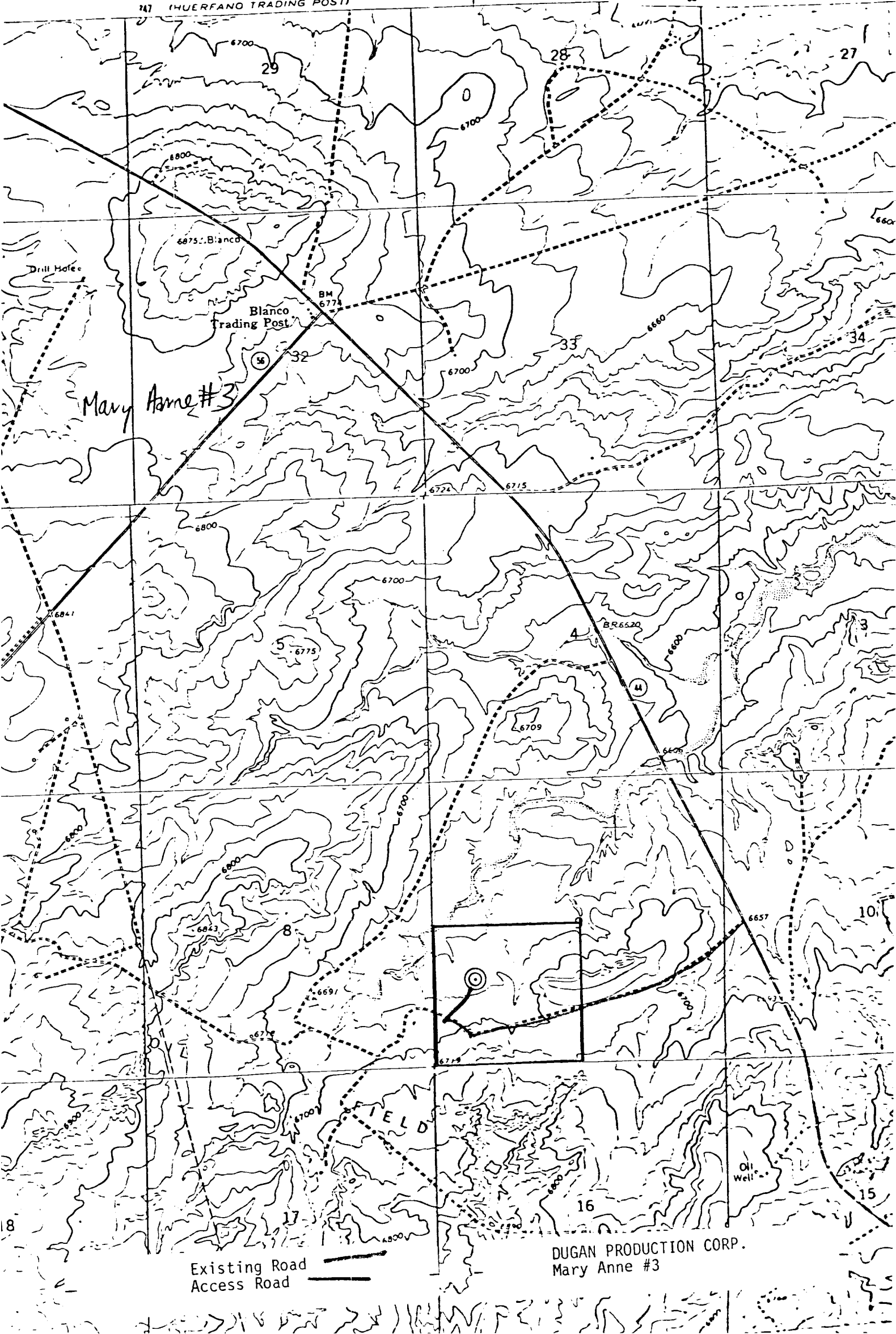
4456 IV NE
747 (HUERFANO TRADING POST)

749

47°30"

750

751



Mary Anne #3

Blanco Trading Post

Drill Hole

Existing Road
Access Road

DUGAN PRODUCTION CORP.
Mary Anne #3

Oil Well