

UNITED STATES  
DEPARTMENT OF THE INTERIOR  
GEOLOGICAL SURVEY

APPLICATION FOR PERMIT TO DRILL, DEEPEN, OR PLUG BACK

A. TYPE OF WORK  
DRILL ☒ DEEPEN ☐ PLUG BACK ☐

B. TYPE OF WELL  
OIL WELL ☒ GAS WELL ☐ OTHER ☐ SINGLE ZONE ☒ MULTIPLE ZONE ☐

C. NAME OF OPERATOR  
Merriam Oil & Gas Corporation

D. ADDRESS OF OPERATOR  
P. O. Box 1017, Farmington, New Mexico 87499

E. LOCATION OF WELL (Report location clearly and in accordance with any State requirements.)  
At surface 330' FNL and 2170' FWL  
At proposed prod. zone 1650'  
Same

F. DISTANCE IN MILES AND DIRECTION FROM NEAREST TOWN OR POST OFFICE  
16 miles North of Lybrook, New Mexico

G. DISTANCE FROM PROPOSED LOCATION TO NEAREST PROPERTY OR LEASE LINE, FT. (Also to nearest drilg. unit line, if any)  
330'

H. DISTANCE FROM PROPOSED LOCATION TO NEAREST WELL, DRILLING COMPLETED, OR APPLIED FOR, ON THIS LEASE, FT.  
3200'

I. ELEVATIONS (Show whether DF, RT, GR, etc.)  
6960' GL

J. DRILLING OPERATIONS AUTHORIZED ARE SUBJECT TO COMPLIANCE WITH ATTACHED GENERAL REQUIREMENTS PROPOSED CASING AND CEMENTING PROGRAM

SIZE OF HOLE	SIZE OF CASING	WEIGHT PER FOOT	SETTING DEPTH	QUANTITY OF CEMENT
12-1/4"	8-5/8", J-55	24 #/ft.	200 ft.	175 sx (360.5 cu. ft.)
7-7/8"	4-1/2", J-55	10.5 #/ft.	5950 ft.	as below

Will drill 12-1/4" surface hole to 200 ft. and set 200 ft. of 8-5/8", 24 #/ft., J-55 grade casing with 175 sx Class B cement with 3% CaCl<sub>2</sub>. Will drill 7-7/8" hole to 5950 ft. Will run open hole logs. No other testing planned. If well appears productive, will run ft. of 4-1/2", 10.5 #/ft, J-55 grade casing and stage cement. First stage will cement with 175 sx Class H 2% gel (1.22 cu. ft./sk. yield) 275 cu. ft. cement to cover Gallup interval from TD. Estimated top of cement is 4950 ft. Will set stage collar at 4900 ft., below Point Lookout Formation. Second stage will cement with 700 sx Class G 2% D-79 (2.06 cu. ft./sk) 1442 cu. ft. cement. Followed by 50 sx Class H 2% gel (1.22 cu. ft./sk. yield) 61 cu. ft. cement to cover Mesaverde, Chacra, Pictured Cliffs, Fruitland and Ojo Alamo. Top of cement will be at surface.

Drilling circulating medium will be low solids, non dispersed, low water loss mud using bentonite, starch, CMC, and fresh water.

Minimum specifications for pressure control is 10", 900 series double ram blow out preventer Will perforate and stimulate as required for completion.

IN ABOVE SPACE DESCRIBE PROPOSED PROGRAM: If proposal is to deepen or plug back, give data on present productive zone and proposed new productive zone. If proposal is to drill or deepen directionally, give pertinent data on subsurface locations and measured and true vertical depths. Give blowout preventer program, if any.

SIGNED [Signature] TITLE Operations Manager

(This space for Federal or State office use)

PERMIT NO. \_\_\_\_\_ APPROVAL DATE \_\_\_\_\_

APPROVED BY \_\_\_\_\_ TITLE \_\_\_\_\_

CONDITIONS OF APPROVAL, IF ANY:

5. LEASE DESIGNATION AND SERIAL NO.

NM 16589

6. IF INDIAN, ALLOTTEE OR TRIBE NAME

7. UNIT AGREEMENT NAME

8. FARM OR LEASE NAME

Shoo Fly

9. WELL NO.

10. FIELD AND POOL OR WILDCAT

Escrito Gallup

11. SEC. T. R. M. OR BLK. AND SURVEY OR AREA

Sec. 14, T24N, R8W

12. COUNTY OR PARISH

San Juan Co.,

13. STATE

New Mexico

17. NO. OF ACRES ASSIGNED TO THIS WELL

80

20. ROTARY OR CABLE TOOLS

0 - TD -

22. APPROX. DATE WORK WILL START

Fall, 1984

This action is subject to administrative

appeal pursuant to 30 CFR 290.

APPROVED

NOV 12 1984

FARMINGTON

NMOCG

All distances must be from the outer boundaries of the Section.

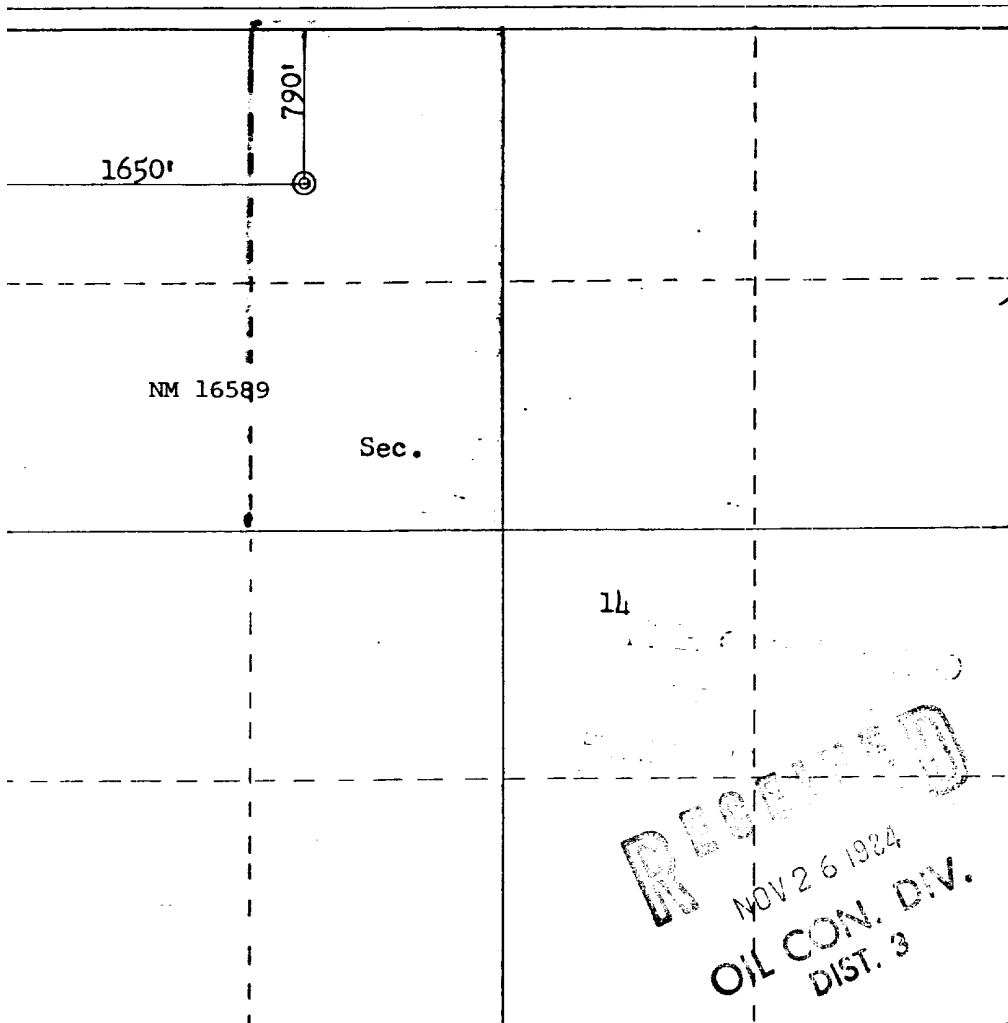
Operator <b>MERRION OIL &amp; GAS CORPORATION</b>			Lease <b>SHOO FLY</b>		Well No. <b>1</b>
Unit Letter <b>C</b>	Section <b>14</b>	Township <b>24N</b>	Range <b>8W</b>	County <b>San Juan</b>	
Actual Footage Location of Well: <b>790</b> feet from the <b>North</b> line and <b>1650</b> feet from the <b>West</b> line					
Ground Level Elev: <b>6939</b>	Producing Formation <b>Gallup</b>		Pool <b>Escrito Gallup</b>		Dedicated Acreage: <b>80</b> Acres

1. Outline the acreage dedicated to the subject well by colored pencil or hachure marks on the plat below.
2. If more than one lease is dedicated to the well, outline each and identify the ownership thereof (both as to working interest and royalty).
3. If more than one lease of different ownership is dedicated to the well, have the interests of all owners been consolidated by communitization, unitization, force-pooling, etc?

☐ Yes ☐ No If answer is "yes," type of consolidation \_\_\_\_\_

If answer is "no," list the owners and tract descriptions which have actually been consolidated. (Use reverse side of this form if necessary.) \_\_\_\_\_

No allowable will be assigned to the well until all interests have been consolidated (by communitization, unitization, forced-pooling, or otherwise) or until a non-standard unit, eliminating such interests, has been approved by the Commission.



Scale: 1"=1000'

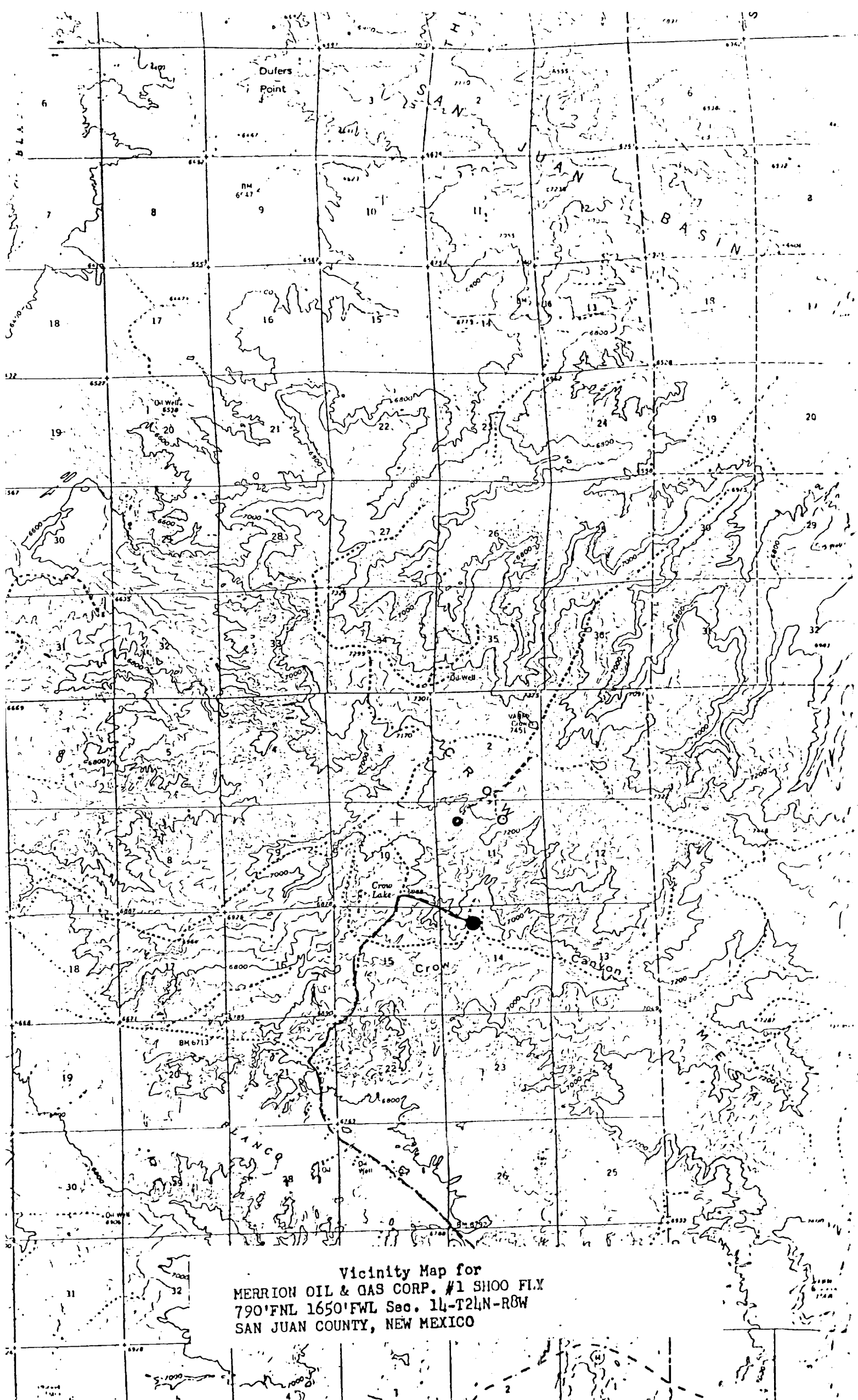
CERTIFICATION

I hereby certify that the information contained herein is true and complete to the best of my knowledge and belief.

Name  
**Steve S. Dunn**  
Position  
**Operations Manager**  
Company  
**Merrion Oil & Gas Corp.**  
Date  
**10/9/84**

I hereby certify that the well location shown on this plat was plotted from field notes of actual surveys made by me or under my supervision, and that the same is true and correct to the best of my knowledge and belief.

Date Surveyed  
**October 5, 1984**  
Registered Professional Engineer and Land Surveyor  
**Fred B. Kern Jr.**  
Certificate No. **3950**



Vicinity Map for  
MERRION OIL & GAS CORP. #1 SHOO FLX  
790'FNL 1650'FWL Sec. 14-T24N-R8W  
SAN JUAN COUNTY, NEW MEXICO