

UNITED STATES  
DEPARTMENT OF THE INTERIOR  
GEOLOGICAL SURVEY

## APPLICATION FOR PERMIT TO DRILL, DEEPEN, OR PLUG BACK

## 1a. TYPE OF WORK

DRILL ☒DEEPEN ☐PLUG BACK ☐

## b. TYPE OF WELL

OIL  
WELL ☒GAS  
WELL ☐

OTHER

SINGLE  
ZONE ☒MULTIPLE  
ZONE ☐

## 2. NAME OF OPERATOR

DUGAN PRODUCTION CORP.

## 3. ADDRESS OF OPERATOR

P.O. Box 208, Farmington, NM 87499

## 4. LOCATION OF WELL (Report location clearly and in accordance with any State requirements.)

At surface

1980' FSL &amp; 660' FEL

At proposed prod. zone

## 14. DISTANCE IN MILES AND DIRECTION FROM NEAREST TOWN OR POST OFFICE\*

approx. 9 1/2 miles SW of Blanco Trading Post, NM

## 15. DISTANCE FROM PROPOSED\*

LOCATION TO NEAREST  
PROPERTY OR LEASE LINE, FT. 660'  
(Also to nearest drig. unit line, if any)

## 16. NO. OF ACRES IN LEASE

1594.4

17. NO. OF ACRES ASSIGNED  
TO THIS WELL

80

18. DISTANCE FROM PROPOSED LOCATION\*  
TO NEAREST WELL, DRILLING, COMPLETED,  
OR APPLIED FOR, ON THIS LEASE, FT.1867' from  
Gold Medal #5

## 19. PROPOSED DEPTH

4745'

## 20. ROTARY OR CABLE TOOLS

Rotary

## 21. ELEVATIONS (Show whether DF, RT, GR, etc.)

6561' GL; 6573' RKB

DRILLING OPERATIONS AUTHORIZED ARE

SUBJECT TO COMPLIANCE WITH ATTACHED

CENTRAL PROPOSED CASING AND CEMENTING PROGRAM

## 22. APPROX. DATE WORK WILL START\*

ASAP

## 23.

SIZE OF HOLE	SIZE OF CASING	WEIGHT PER FOOT	SETTING DEPTH	
12-1/4"	8-5/8"	24#	200'	159 cf circ. to surface
7-7/8"	4-1/2"	10.5#	4745'	1501 cf circ. to surface

Plan to drill a 12-1/4" hole and set 200' of 8-5/8" OD, 24#, J-55 surface casing; then plan to drill a 7-7/8" hole to total depth with gel-water-mud program to test Gallup formation. Plan to run IES and CDL logs. If determined productive, will run 4-1/2", 10.5#, J-55 casing, selectively perforate, frac, clean out after frac and complete well.

RECEIVED

OCT 07 1987

OIL CON. DIV  
DIST. 3

IN ABOVE SPACE DESCRIBE PROPOSED PROGRAM: If proposal is to deepen or plug back, give data on present productive zone and proposed new productive zone. If proposal is to drill or deepen directionally, give pertinent data on subsurface locations and measured and true vertical depths. Give blowout preventer program, if any.

## 24.

SIGNED

Sherman E. Dugan

TITLE

Geologist

DATE

9-29-87

(This space for Federal or State office use)

PERMIT NO.

APPROVAL DATE

APPROVED BY

TITLE

DATE

CONDITIONS OF APPROVAL, IF ANY:

NMOCC

\*See Instructions On Reverse Side

All distances must be from the outer boundaries of the Section.

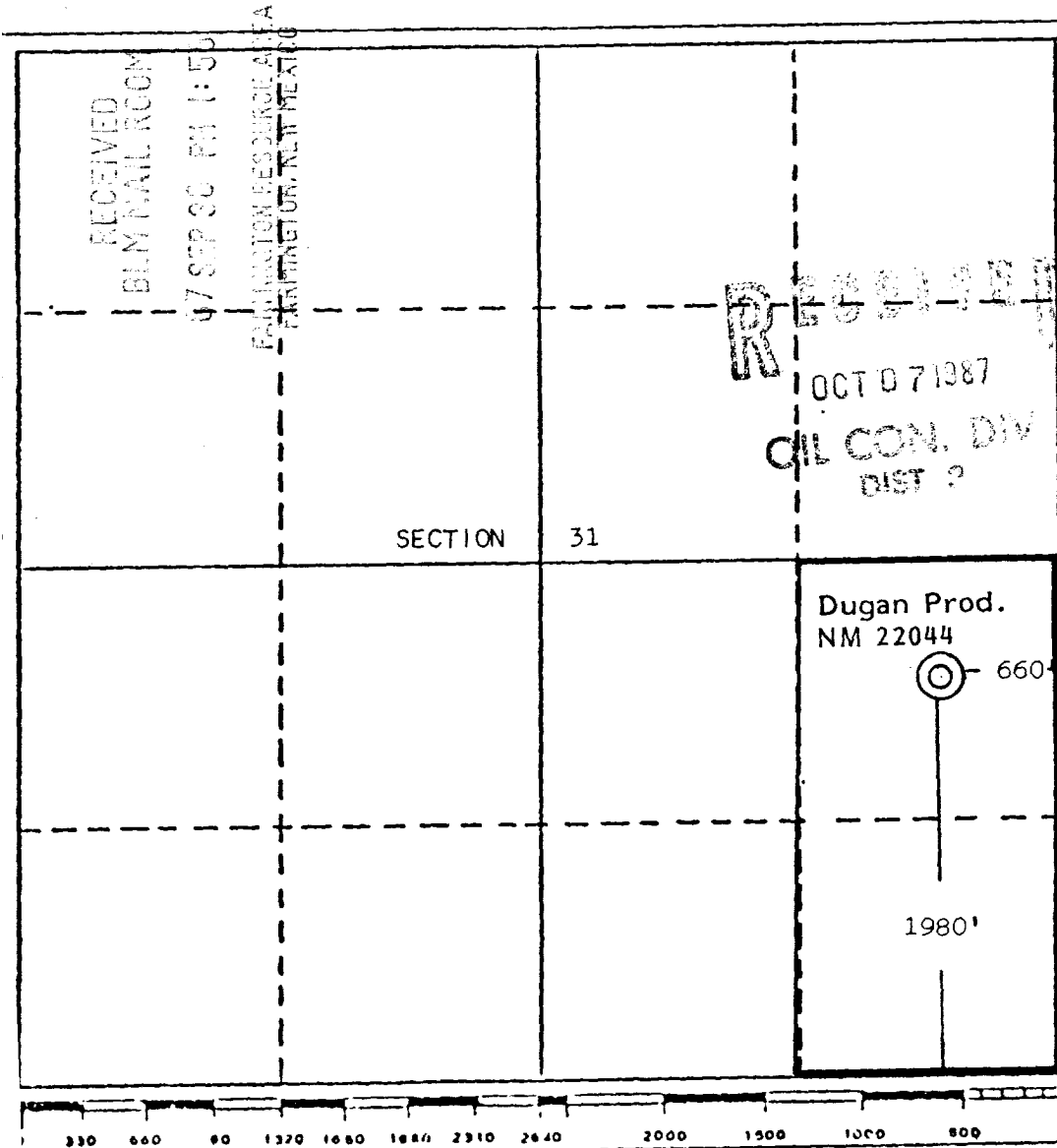
Operator Dugan Production Corporation		Lease Gold Medal		Well No. 3	
Unit Letter I	Section 31	Township 24 North	Range 10 West	County San Juan	
Actual Footage Location of Well:					
1980 feet from the South line and		660 feet from the East line			
Ground Level Elev. 6561	Producing Formation Gallup	Pool South Bisti Gallup EXT		Dedicated Acreage: 80 Acres	

1. Outline the acreage dedicated to the subject well by colored pencil or hatchure marks on the plat below.
2. If more than one lease is dedicated to the well, outline each and identify the ownership thereof (both as to working interest and royalty).
3. If more than one lease of different ownership is dedicated to the well, have the interests of all owners been consolidated by communitization, unitization, force-pooling, etc?

☐ Yes ☐ No If answer is "yes," type of consolidation \_\_\_\_\_

If answer is "no," list the owners and tract descriptions which have actually been consolidated. (Use reverse side of this form if necessary.) \_\_\_\_\_

No allowable will be assigned to the well until all interests have been consolidated (by communitization, unitization, forced-pooling, or otherwise) or until a non-standard unit, eliminating such interests, has been approved by the Division.



## CERTIFICATION

I hereby certify that the information contained herein is true and complete to the best of my knowledge and belief.

*Sherman E. Dugan*  
Name  
Sherman E. Dugan

Position  
Geologist

Company  
Dugan Production Corp.

Date  
9-29-87

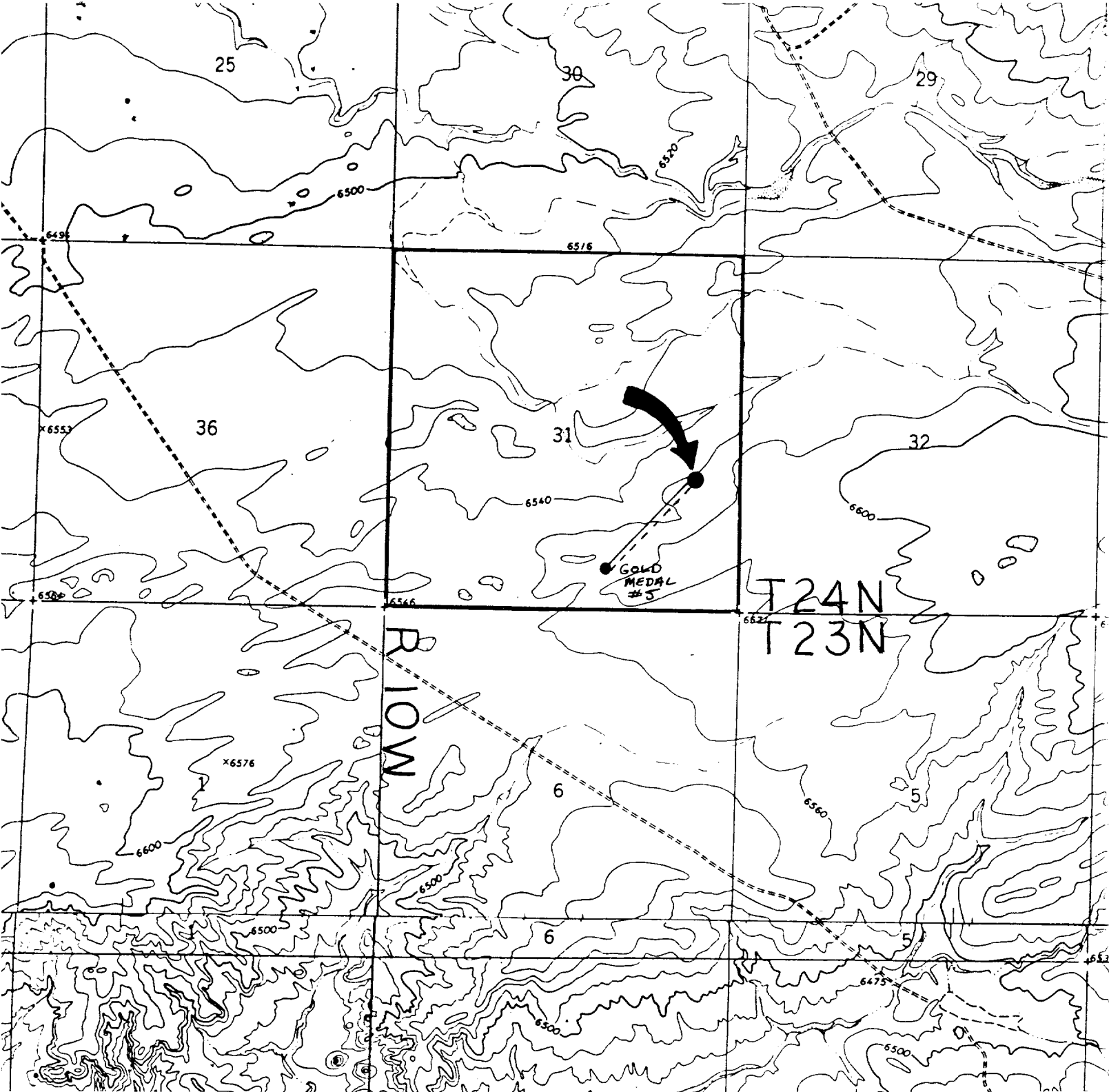
I hereby certify that the location shown on this plat was taken from field notes or other reliable source and that the same is true and correct to the best of my knowledge and belief.

EDGAR L. RISENHOVER  
NEW MEXICO  
5979  
REGISTERED LAND SURVEYOR

Date Surveyed  
September 15, 1987

Registered Professional Engineer  
and/or Land Surveyor

*Edgar L. Risenhoover*  
Certificate No. 5979  
Edgar L. Risenhoover, L.S.



DUGAN PRODUCTION CORP. - Gold Medal #3  
Existing Roads Exhibit E

Vicinity of nearest town or reference pt.  
9½ miles SW of Blanco Trading Post, NM

Type of surface dirt

Conditions good

Other \_\_\_\_\_

Reference map: USGS map: Huerfano Trading Post SW, 1966 (7.5 min series) and Pueblo

DUGAN PRODUCTION CORP. - Gold Medal #3  
Planned Access Road(s) Exhibit E

Width 20' Maximum grades 1%

Drainage design as required

Cuts & Fills See Cut & Fill Diagram

Surfacing material none

☞ Turnouts

☐ Culverts

☐ Gates

☐ Cattleguards

/// Fence cuts

Access road(s) (do) do not cross (Fed) Ind land.