

(November 1983)  
(formerly 9-331C)

UNITED STATES  
DEPARTMENT OF THE INTERIOR  
BUREAU OF LAND MANAGEMENT

30-045-2854  
RECEIVED

Budget Bureau No. 1004-0136  
Expires August 31, 1985

## APPLICATION FOR PERMIT TO DRILL, DEEPEN, OR PLUG BACK

## 1a. TYPE OF WORK

DRILL



DEEPEN



PLUG BACK



## b. TYPE OF WELL

OIL

GAS

SINGLE

MULTIPLE

WELL



WELL



OTHER

ZONE



ZONE



## 2. Name of Operator

Bannon Energy, Inc., c/o Daggett &amp; Chenault, Inc.

## 3. ADDRESS OF OPERATOR

3539 E. 30th, Ste. 7B, Farmington, NM 87402

## 4. LOCATION OF WELL. (Report location clearly and in accordance with any State Requirements. \*)

At surface

Unit J 1699' FSL, 2301' FEL, Sec. 23 T24N-R8W

At proposed prod. zone

Same

## 14. DISTANCE IN MILES AND DIRECTION FROM NEAREST TOWN OR POST OFFICE\*

Approximately 8 miles NW of Lybrook

## 15. DISTANCE FROM PROPOSED\*

LOCATION TO NEAREST  
PROPERTY OR LEASE LINE FT.

(Also to nearest drlg. unit line, if any)

1699'

## 16. NO. OF ACRES IN LEASE

600

## 18. DISTANCE FROM PROPOSED LOCATION\*

TO NEAREST WELL, DRILLING, COMPLETED,  
OR APPLIED FOR, ON THIS LEASE, FT.

1072'

## 19. PROPOSED DEPTH

5800'

## 21. ELEVATIONS (Show whether DR, RT, GR, etc.)

6876 GR

subject to technical and  
procedural review pursuant to 43 CFR 3165.3  
and appeal pursuant to 43 CFR 3165.3

## 23 PROPOSED CASING AND CEMENTING PROGRAM

SIZE OF HOLE	SIZE OF CASING	WEIGHT PER FOOT	SETTING DEPTH	QUANTITY OF CEMENT
12-1/4"	8-5/8"	24.0 lb. J-55	300'	Cement to Surface
7-7/8"	4-1/2"	11.6 lb. K-55	5800'	800 sx-volume to be calculated subsequent to logging and circulated to surface

Well to be drilled to penetrate the Gallup formation. All producing intervals in the Gallup will be stimulated as necessary.

## EXHIBITS:

- "A" Location and Elevation Plat
- "B" Ten Point Drilling Program
- "C" Blowout Preventer Diagram
- "D" Multi-Point Requirements of APD
- "E" Site Specific Checklist for Roads  
(Attachment to "E" - Topo Map)

- "F" Drill Rig Layout
- "G" Completion Program Layout
- "H" Location Profile

The gas from this lease is committed.

RECEIVED

MAY 20 1991

OIL CON. DIV.  
DIST. 3

IN ABOVE SPACE DESCRIBE PROPOSED PROGRAM: If proposal is to deepen or plug back, give data on present productive zone and proposed new productive zone. If proposal is to drill or deepen directionally, give pertinent data on subsurface locations and measured and true vertical depths. Give blowout preventer program, if any.

24.

SIGNED

TITLE

Vice President Operations

DATE

04/02/91

(This space for Federal or State office use)

PERMIT NO.

APPROVAL DATE

APPROVED BY

TITLE

CONDITIONS OF APPROVAL, IF ANY:

APPROVED  
AS AMENDED

MAY 09 1991

AREA MANAGER

Title 18 U.S.C. Section 1001, makes it a crime for any person knowingly and willfully to make to any department or agency of the United States any false, fictitious or fraudulent statements or representations as to any matter within its jurisdiction.

BE162

NMOCD

Submit to Appropriate  
District Office  
State Lease - 4 copies  
Fee Lease - 3 copies

State of New Mexico  
Energy, Minerals and Natural Resources Department

Form C-102  
Revised 1-1-89

OIL CONSERVATION DIVISION

P.O. Box 2088  
Santa Fe, New Mexico 87504-2088

DISTRICT I  
P.O. Box 1980, Hobbs, NM 88240

DISTRICT II  
P.O. Drawer DD, Artesia, NM 88210

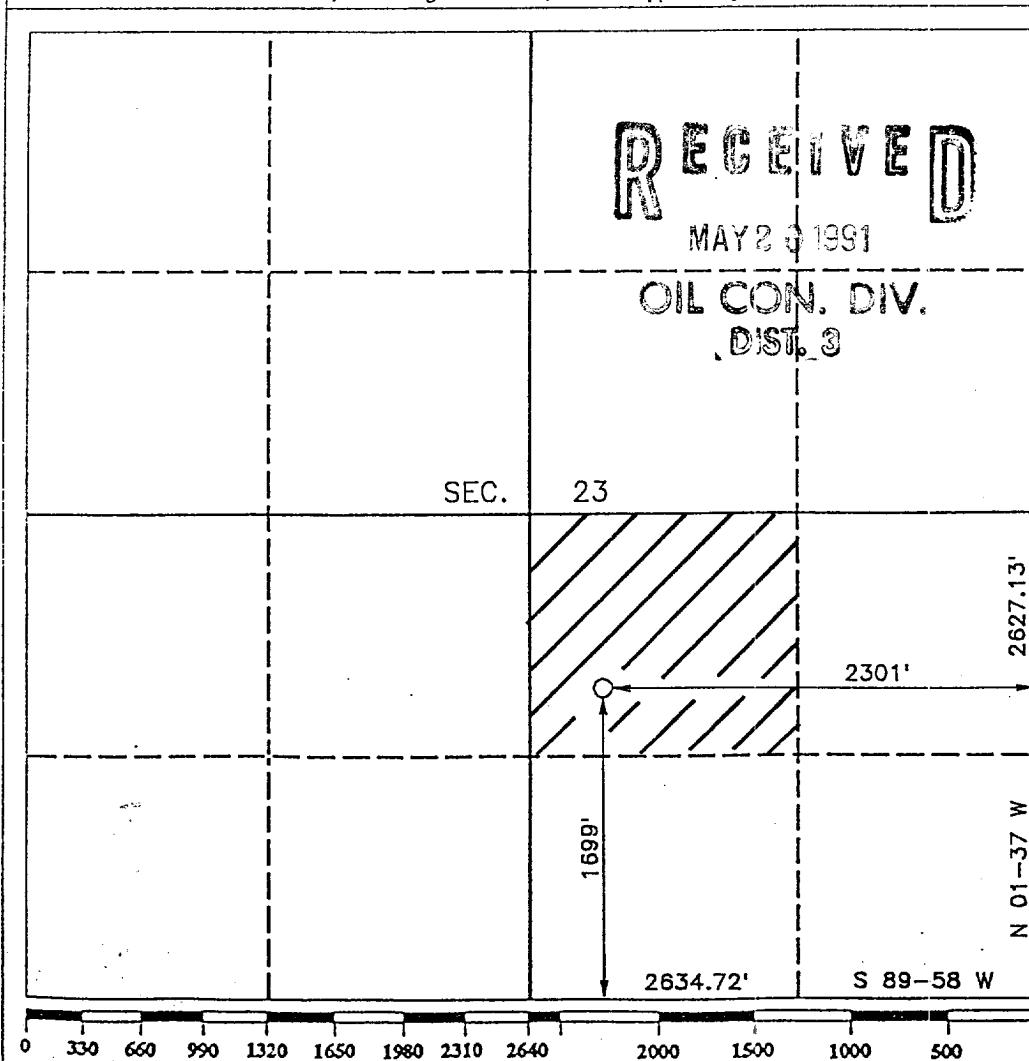
DISTRICT III  
1000 Rio Brazos Rd., Aztec, NM 87410

WELL LOCATION AND ACREAGE DEDICATION PLAT

All Distances must be from the outer boundaries of the section

Operator <b>BANNON ENERGY, INC.</b>		Lease <b>SOUTH BLANCO FED. UNIT</b>		Well No. <b>23-7</b>
Unit Letter <b>J</b>	Section <b>23</b>	Township <b>T.24 N.</b>	Range <b>R.8 W.</b>	County <b>SAN JUAN COUNTY</b>
Actual Footage Location of Well: <b>1699</b> feet from the <b>SOUTH</b> line and <b>2301</b> feet from the <b>EAST</b> line				
Ground level Elev. <b>6876</b>	Producing Formation <b>Gallup</b>	Pool <b>Lybrook/Gallup EXT</b>		Dedicated Acreage: <b>40 Acres</b>

- Outline the acreage dedicated to the subject well by colored pencil or hatchure marks on the plat below.
- If more than one lease is dedicated to the well, outline each and identify the ownership thereof (both as to working interest and royalty).
- If more than one lease of different ownership is dedicated to the well, have the interest of all owners been consolidated by communitization, unitization, force-pooling, etc?  
☐ Yes ☐ No If answer is "yes" type of consolidation \_\_\_\_\_  
If answer is "no" list the owners and tract descriptions which have actually been consolidated. (Use reverse side of this form if necessary.) \_\_\_\_\_  
No allowable will be assigned to the well until all interests have been consolidated (by communitization, unitization, forced-pooling, or otherwise) or until a non-standard unit, eliminating such interest, has been approved by the Division.



OPERATOR CERTIFICATION

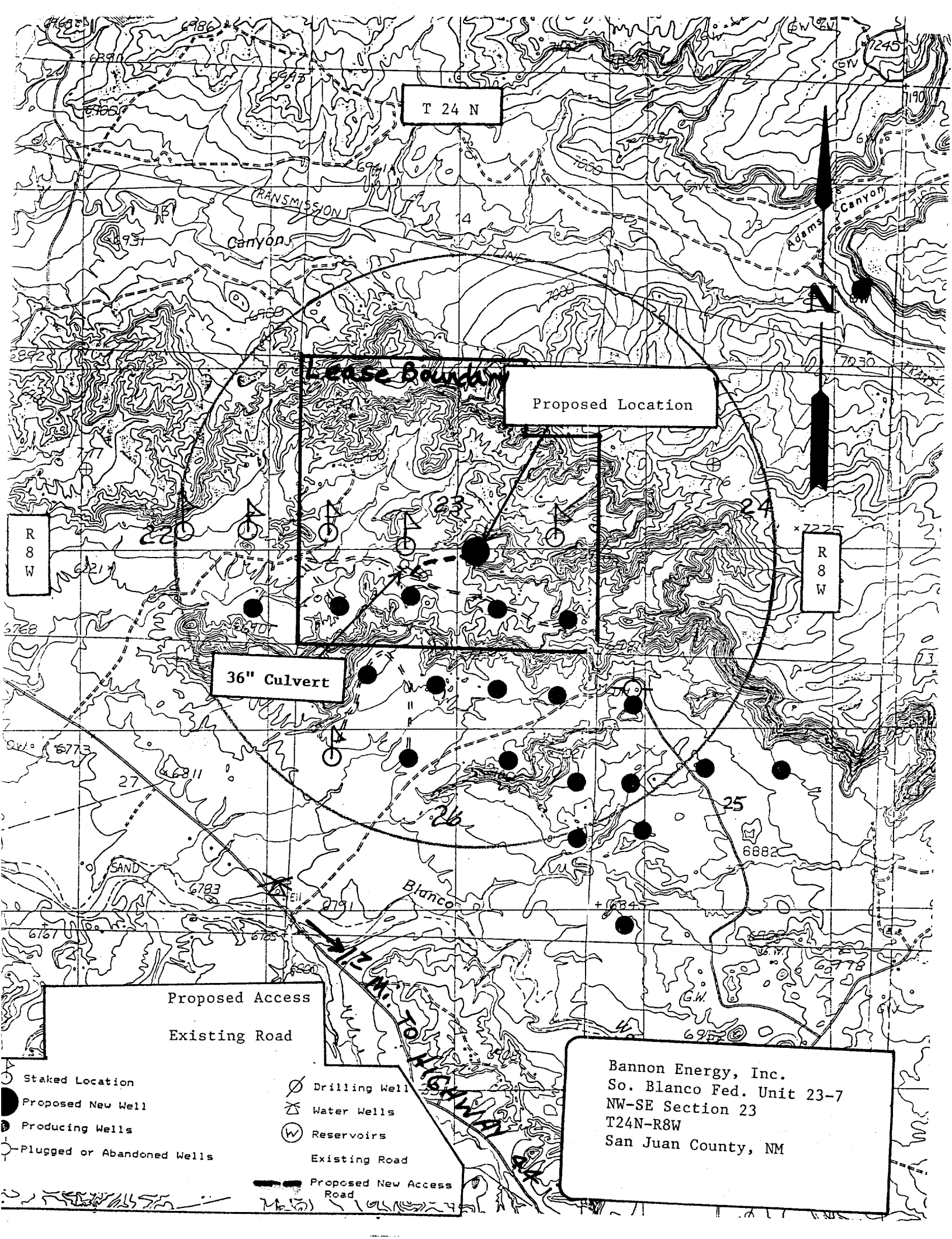
I hereby certify that the information contained herein is true and complete to the best of my knowledge and belief.

Signature  
*R.A. Chabaud*  
Printed Name  
**R.A. Chabaud**  
Position  
**V.P. Operations**  
Company  
**Bannon Energy, Inc.**  
Date  
**04/02/91**

SURVEYOR CERTIFICATION

I hereby certify that the well location shown on this plat was plotted from field notes of actual surveys made by me or under my supervision, and that the same is true and correct to the best of my knowledge and belief.

Date Surveyed  
**MARCH 7, 1991**  
Signature & Seal of Professional Surveyor  
**HENRY P. BURKHURST JR.**  
Certificate No.  
**11393**  
REGISTERED PROFESSIONAL SURVEYOR



T 24 N

TRANSMISSION  
Canyon

Adams  
Canyon

Lease Boundary

Proposed Location

36" Culvert

Proposed Access

Existing Road

Staked Location

Proposed New Well

Producing Wells

Plugged or Abandoned Wells

Drilling Well

Water Wells

Reservoirs

Existing Road

Proposed New Access  
Road

Bannan Energy, Inc.  
So. Blanco Fed. Unit 23-7  
NW-SE Section 23  
T24N-R8W  
San Juan County, NM