

UNITED STATES
DEPARTMENT OF THE INTERIOR
BUREAU OF LAND MANAGEMENT

APPLICATION FOR PERMIT TO DRILL OR DEEPEN

1a. TYPE OF WORK

DRILL ☒DEEPEN ☐

JUN 19 PM 1:24

b. TYPE OF WELL

OIL
WELL ☐GAS
WELL ☒

OTHER

SINGLE
ZONE ☒MULTIPLE
ZONE ☐

2. NAME OF OPERATOR

DUGAN PRODUCTION CORP.

006515

070 11/11/1998

3. ADDRESS AND TELEPHONE NO.

P.O. Box 420, Farmington, NM 87499

4. LOCATION OF WELL (Report location clearly and in accordance with any State requirements.)

At surface

1850' FSL & 1850' FWL (NE/4 SW/4)

At proposed prod. zone

14. DISTANCE IN MILES AND DIRECTION FROM NEAREST TOWN OR POST OFFICE*

Approx. 7.5 miles SW of Blanco Trading Post, NM

15. DISTANCE FROM PROPOSED*

LOCATION TO NEAREST
PROPERTY OR LEASE LINE, FT.
(Also to nearest drilg. unit line, if any)

1850'

16. NO. OF ACRES IN LEASE

1271.56

17. NO. OF ACRES ASSIGNED
TO THIS WELL

320

13. DISTANCE FROM PROPOSED LOCATION*
TO NEAREST WELL, DRILLING, COMPLETED,
OR APPLIED FOR, ON THIS LEASE, FT.1456' from DPC
Target #1

19. PROPOSED DEPTH

1280'

20. ROTARY OR CABLE TOOLS

Rotary

21. ELEVATIONS (Show whether DF, RT, GR, etc.)

6618' GR (est)

22. APPROX. DATE WORK WILL START*

ASAP

23. PROPOSED CASING AND CEMENTING PROGRAM

SIZE OF HOLE	GRADE SIZE OF CASING	WEIGHT PER FOOT	SETTING DEPTH	QUANTITY OF CEMENT
9-7/8"	7"	20#	120'	50 sx (59 cu.ft.) circ. to surf.
6-1/4"	4 1/2"	10.5#	1280'	135 sx (233 cu.ft.) circ. to surf.

DRILLING OPERATIONS AUTHORIZED ARE
SUBJECT TO COMPLIANCE WITH ATTACHED
"GENERAL REQUIREMENTS"This action is subject to technical and
procedural review pursuant to 43 CFR 3165.3
and appeal pursuant to 43 CFR 3165.4.

Plan to drill a 9-7/8" hole and set 120' of 7" OD, 20#, J-55 surface casing;
then plan to drill a 6-1/4" hole to total depth with gel-water-mud program to
test the Fruitland Coal formation. Plan to run IES and CDL logs. If determined
productive, will run 4 1/2", 10.5#, J-55 casing, selectively perforate, frac,
clean out after frac and complete well.

IN ABOVE SPACE DESCRIBE PROPOSED PROGRAM: If proposal is to deepen, give data on present productive zone and proposed new productive zone. If proposal is to drill or
deepen directionally, give pertinent data on subsurface locations and measured and true vertical depths. Give blowout preventer program, if any.

24.

SIGNED

TITLE

Vice-President

DATE June 17, 1998

(This space for Federal or State office use)

PERMIT NO.

APPROVAL DATE

JUL 6 1998

Application approval does not warrant or certify that the applicant holds legal or equitable title to those rights in the subject lease which would entitle the applicant to conduct operations thereon.
CONDITIONS OF APPROVAL, IF ANY:

APPROVED BY

/S/ Duane W. Spencer

TITLE

DATE

JUL - 1 1998

*See Instructions On Reverse Side

Title 18 U.S.C. Section 1001, makes it a crime for any person knowingly and willfully to make to any department or agency of the
United States any false, fictitious or fraudulent statements or representations as to any matter within its jurisdiction.

NMOCD

District I
PO Box 1980, Hobbs, NM 88241-1980
District II
PO Drawer DD, Artesia, NM 88211-0719
District III
1000 Rio Brazos Rd., Aztec, NM 87410
District IV
PO Box 2088, Santa Fe, NM 87504-2088

State of New Mexico
Energy, Minerals & Natural Resources Department

OIL CONSERVATION DIVISION

PO Box 2088

Santa Fe, NM 87504-2088

RECEIVED

95 JUN 19 PM 1:24

Form C-102

Revised February 21, 1994

Instructions on back

Submit to Appropriate District Office

State Lease - 4 Copies

Fee Lease - 3 Copies

☐ AMENDED REPORT

WELL LOCATION AND ACREAGE DEDICATION PLAT

API Number 30-045-29635		Pool Code 71629	Pool Name Basin Fruitland Coal
Property Code 003859	Property Name Target		Well Number 90
OGRID No. 006515	Operator Name Dugan Production Corporation		Elevation 6618' Estimated

Surface Location

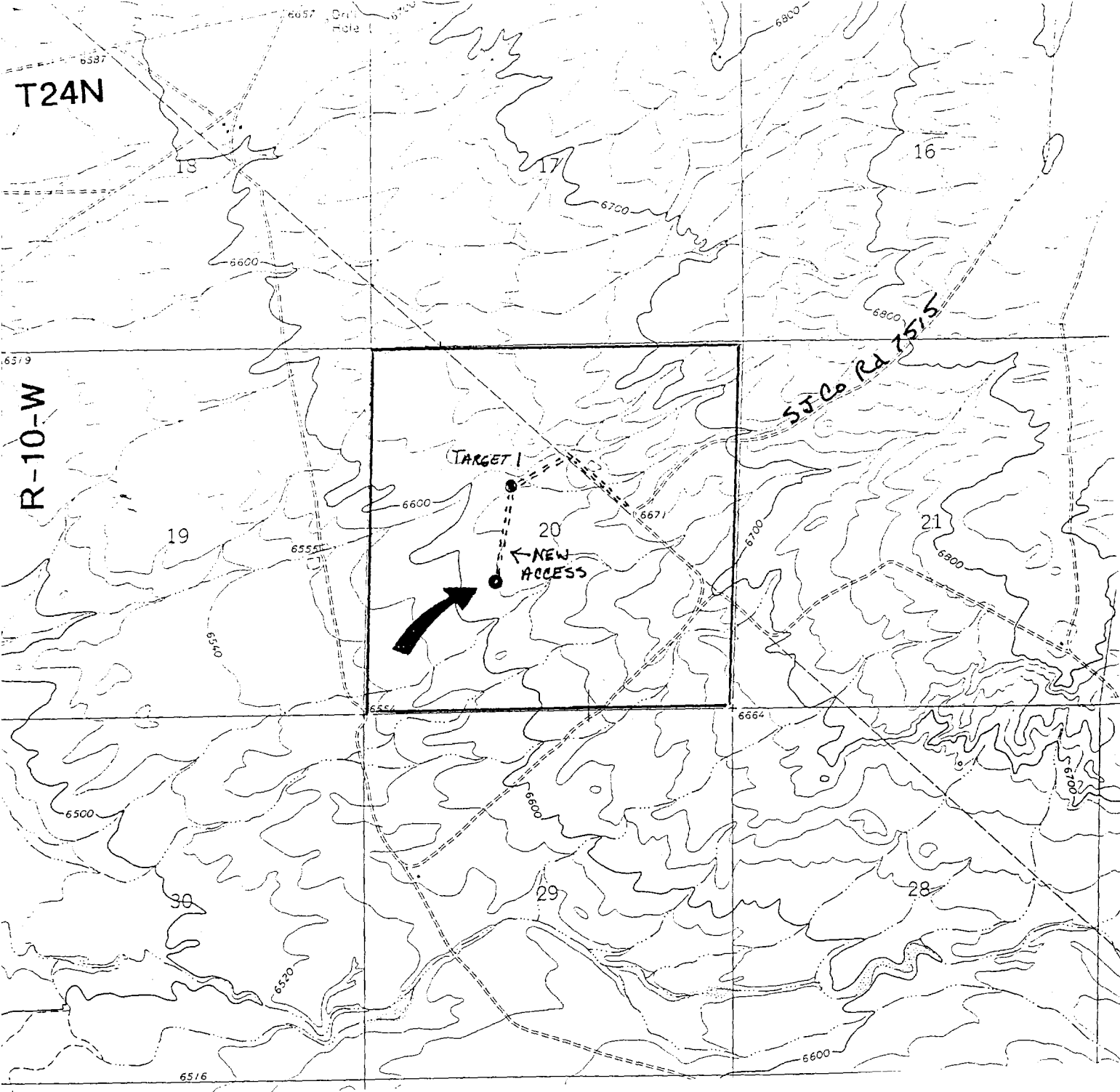
UL or lot no.	Section	Township	Range	Lot Idn	Feet from the	North/South line	Feet from the	East/West line	County
	20	24N	10W	K	1850	South	1850	West	San Juan

Bottom Hole Location If Different From Surface

UL or lot no.	Section	Township	Range	Lot Idn	Feet from the	North/South line	Feet from the	East/West line	County
Dedicated Acres 320		Joint or Infill		Consolidation Code		Order No.			

NO ALLOWABLE WILL BE ASSIGNED TO THIS COMPLETION UNTIL ALL INTERESTS HAVE BEEN CONSOLIDATED
OR A NON-STANDARD UNIT HAS BEEN APPROVED BY THE DIVISION

16						17 OPERATOR CERTIFICATION	
						I hereby certify that the information contained herein is true and complete to the best of my knowledge and belief	
Dugan NM		Production 43442				Signature Sherman E. Dugan	
		Section 20				Printed Name Vice-President	
						Title June 17, 1998	
						Date	
1850'		1850'				18 SURVEYOR CERTIFICATION	
						I hereby certify that the well location shown on this plat was plotted from field notes of actual surveys made by me or under my supervision, and that the same is true and correct to the best of my belief.	
						Date of Survey May 13, 1998	
						Signature and Seal of EDGAR L. RISENHOOVER	
						Certificate Number 5979	



Existing Roads

Vicinity of nearest town or reference pt.
Approx. 7.5 miles SW of Blanco Trading Post NM

Type of surface dirt

Conditions good

Other _____

Reference map: USGS map Huerfano Trading Post
SW, NM 1966 Dugan Production Corp.

Target #90

Exhibit E

Planned Access Road(s)

Exhibit E

Width 20' Maximum grades 1%

Drainage design as required

Cuts & Fills as required

Surfacing material none

☒ Turnouts

☒ Culverts

☒ Gates

☒ Cattleguards

☒ Fence cuts

☒ Waterbars

☒ Access Road &

☒ Pipeline

Access road(s) do do not cross Fed Ind land.