

NEW MEXICO  
OIL CONSERVATION COMMISSION

Form C-128

Well Location and/or Gas Proration Plat

Date July 13, 1956

Operator Magnolia Petroleum Company Lease Jicarilla "B" Cont. #99

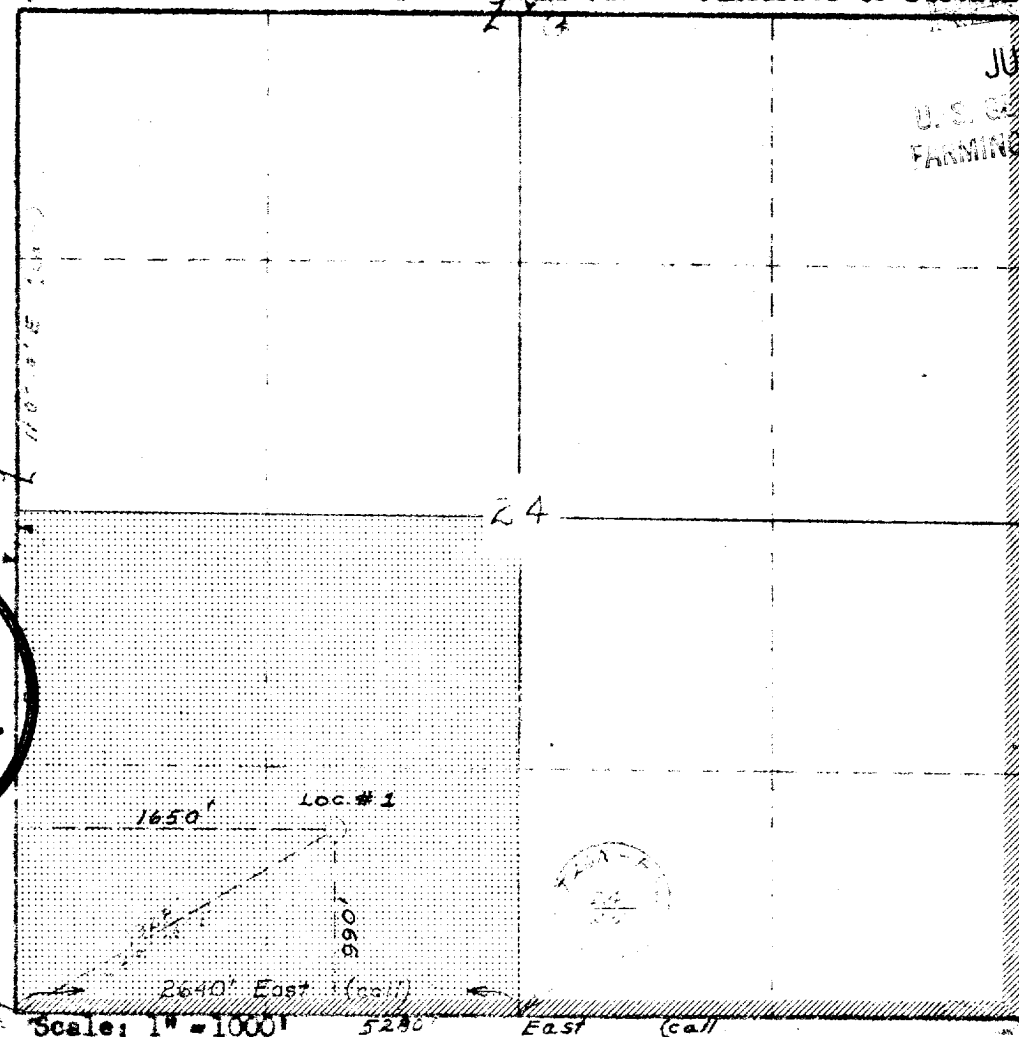
Well No. One (1) Section 24 Township 26 N Range 3 W NMPM

Located 1650 Feet From West Line, 990 Feet From South Line,

Rio Arriba County, New Mexico. G. L. Elevation 7419

Name of Producing Formation Pictured Cliff Undesignated Pictured  
Pool Cliff Gas Dedicated Acreage 160

(Note: All distances must be from outer boundaries of Section)



1. Is this Well a Dual Comp.? Yes X No.    .
2. If the answer to Question 1 is yes, are there any other dually completed wells within the dedicated acreage? Yes     No X.

This is to certify that the above plat was prepared from field notes of actual surveys made by me or under my supervision and that the same are true and correct to the best of my knowledge and belief,

Name B. T. German  
Position R. T. GERMAN, Division Superintendent  
Representing Magnolia Petroleum Company  
Address P. O. Box 633, Midland, Texas

Date Surveyed 8-8-55  
W. B. Price  
Registered Professional Engineer and/or  
Land Surveyor 1415

# OIL CONSERVATION COMMISSION

## AZTEC DISTRICT OFFICE

No. Copies Received **2**

### DISTRIBUTION

	NO. RECEIVED	
Operator		
Santa Fe	<b>1</b>	
Production Office		
State Land Office		
U. S. G. S.		
Transporter		
File	<b>1</b>	<input checked="" type="checkbox"/>