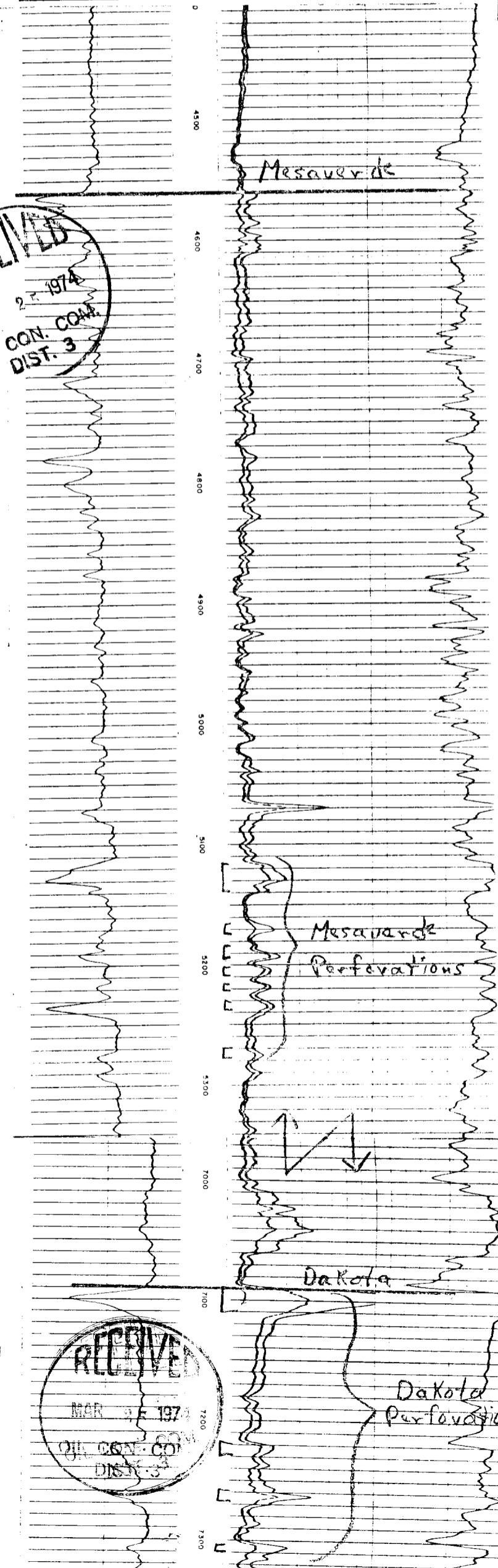


<b>Induction Electrolog</b>	
FILE NO. FM-4370	COMPANY PAN AMERICAN PETROLEUM CORP.
	WELL JICARILLA 155 #22
	FIELD BASIN DAKOTA
	COUNTY RIO ARRIBA STATE NEW MEXICO
	LOCATION: 1660' FSL & 1100' FEL SWNESE
	Other Services ALC-GR
	SEC. 31 TWP. 26N RGE. 5W
Permanent Datum - G.L.	Slev. 6652
Log Measured from - K.B.	14.0 Ft. Above Permanent Datum
Drilling Measured from - K.B.	
	Elevations: KB 6665 DF 6652 GL 6652
Date	10-29-69
Run No.	ONE
Depth-Driller	7451
Depth-Logger	7434
Bottom Logged Interval	7428
Top Logged Interval	454
Casing-Driller	8 5/8 @ 459
Casing-Logger	454
Bit Size	7 7/8
Type Fluid in Hole	CHEM. GEL.
Density and Viscosity	9.0 55
pH and Fluid Loss	10.5 7.4 cc
Source of Sample	PIT
Rm @ Meas. Temp.	2.2 @ 60 °F
Rmf @ Meas. Temp.	1.7 @ 60 °F
Rmc @ Meas. Temp.	2.4 @ 60 °F
Source of Rmf and Rmc	MEASURED
Rm @ BHT	0.8 @ 154 °F
Time Since Circ.	3 HRS.
Max. Rec. Temp. Dry. F.	154
Equip. No. and Location	1240 FARRIS
Recorded By	DICKERSON
Witnessed By	P. BRIDGE

SPONTANEOUS POTENTIAL Millivolts	DEPTH	CONDUCTIVITY Millimhos/m
- 10 + 2		INDUCTION CONDUCTIVITY 40" SPACING
		400 0 800 400
		RESISTIVITY Ohms m <sup>2</sup> /m
		16" NORMAL
		INDUCTION RESISTIVITY 40" SPACING
		0 100 0 1000



RECEIVED  
 MAR 27 1974  
 OIL CON. CO.  
 DIST. 3

RECEIVED  
 MAR 27 1974  
 OIL CON. CO.  
 DIST. 3