

UNITED STATES  
DEPARTMENT OF THE INTERIOR  
GEOLOGICAL SURVEY

30-039-21288

APPLICATION FOR PERMIT TO DRILL, DEEPEN, OR PLUG BACK

1a. TYPE OF WORK

DRILL ☒

DEEPEN ☐

PLUG BACK ☐

b. TYPE OF WELL

OIL  
WELL ☐

GAS  
WELL ☒

OTHER

SINGLE  
ZONE ☒

MULTIPLE  
ZONE ☐

2. NAME OF OPERATOR

Mobil Oil Corporation

3. ADDRESS OF OPERATOR

3 Greenway Plaza East, Suite 800, Houston, Tex. 77046

4. LOCATION OF WELL (Report location clearly and in accordance with any State requirements.)\*

At surface

990' FSL & 990' FEL, Sec. 20, T26N R3W

At proposed prod. zone

Same as surface

14. DISTANCE IN MILES AND DIRECTION FROM NEAREST TOWN OR POST OFFICE\*

5. LEASE DESIGNATION AND SERIAL NO.

6. IF INDIAN, ALLOTTEE OR TRIBE NAME

Jicarilla Contract #98

7. UNIT AGREEMENT NAME

8. FARM OR LEASE NAME

Jicarilla "B"

9. WELL NO.

3-A

10. FIELD AND POOL, OR WILDCAT

Blanco Mesaverde

11. SEC., T., R., M., OR BLK.  
AND SURVEY OR AREA

Sec. 20, T26N, R3W

12. COUNTY OR PARISH 13. STATE

Rio Arriba New Mexico

10. DISTANCE FROM PROPOSED\*

LOCATION TO NEAREST  
PROPERTY OR LEASE LINE, FT.  
(Also to nearest drlg. unit line, if any)

990

16. NO. OF ACRES IN LEASE

2508.20

17. NO. OF ACRES ASSIGNED  
TO THIS WELL

5 320 (2 wells)

18. DISTANCE FROM PROPOSED LOCATION\*

TO NEAREST WELL, DRILLING, COMPLETED,  
OR APPLIED FOR, ON THIS LEASE, FT.

3118

19. PROPOSED DEPTH

6050

20. ROTARY OR CABLE TOOLS

Rotary

21. ELEVATIONS (Show whether DF, RT, GR, etc.)

7183 GL

22. APPROX. DATE WORK WILL START\*

As soon as possible

23.

PROPOSED CASING AND CEMENTING PROGRAM

SIZE OF HOLE	SIZE OF CASING	WEIGHT PER FOOT	SETTING DEPTH	QUANTITY OF CEMENT
12-1/4"	8-5/8"	20# Misco	0-300	(1) Circulate to surface
7-7/8"	4-1/2"	9.5 K-55	0-6050	(2) Circulate to surface

CEMENTING PROGRAM

- (1) Class B cement containing 2% CaCl<sub>2</sub>
- (2) Circulate in two stages using light weight filler cement in the lead slurry of each stage and tail in with neat cement to cover pay zone.

MUD PROGRAM

Depth	Type of Mud	Weight	Viscosity	Water Loss
0-300'	Spud			
300-6050'	Fresh Water Gell	8.8-9.2	30-50	10 C.C.

BLOWOUT PREVENTER PROGRAM ATTACHED

*Gas is dedicated*

IN ABOVE SPACE DESCRIBE PROPOSED PROGRAM: If proposal is to deepen or plug back, give data on present productive zone and proposed new productive zone. If proposal is to drill or deepen directionally, give pertinent data on subsurface locations and measured and true vertical depths. Give blowout preventer program, if any.

24.

SIGNED

*A.D. Bond*

A.D. Bond

TITLE

Regulatory

Engineering Coordinator

DATE

9-7-76

(This space for Federal or State office use)

PERMIT NO.

APPROVAL DATE

APPROVED BY

TITLE

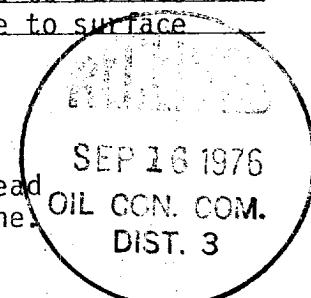
DATE

CONDITIONS OF APPROVAL, IF ANY:

*Okal*

*N*

\*See Instructions On Reverse Side



**NEW MEXICO OIL CONSERVATION COMMISSION  
WELL LOCATION AND ACREAGE DEDICATION PLAT**

Form C-102  
Supersedes C-128  
Effective 1-1-65

All distances must be from the outer boundaries of the Section.

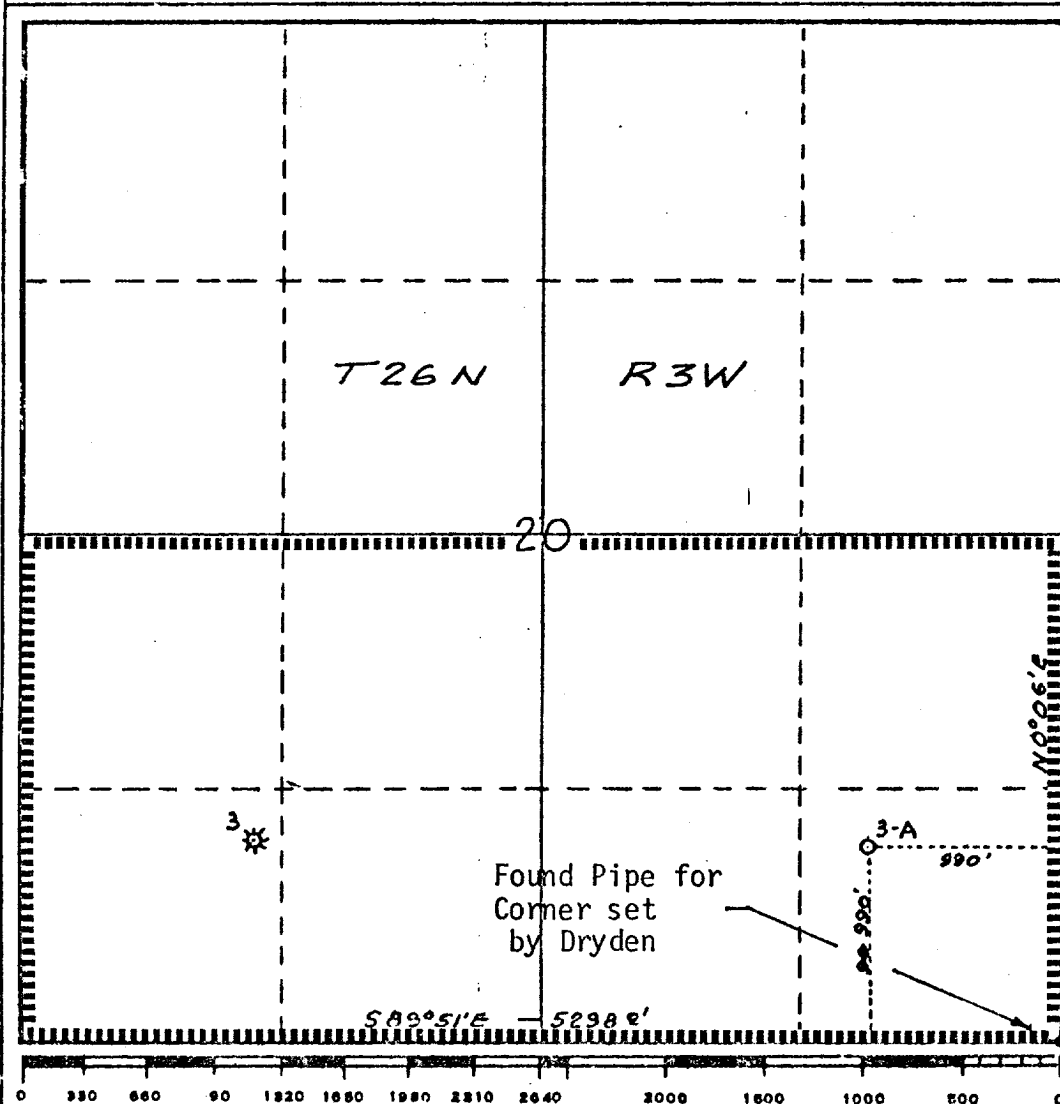
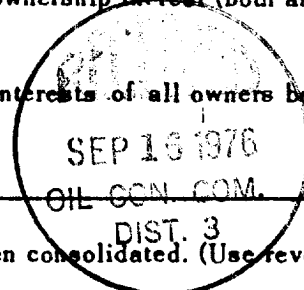
Operator <b>Mobil Oil Corporation</b>			Lease <b>Jicarilla "B"</b>		Well No. <b>3-A</b>
Unit Letter <b>P</b>	Section <b>20</b>	Township <b>26N</b>	Range <b>3W</b>	County <b>Rio Arriba</b>	
Actual Postage Location of Wells: <div style="display: flex; justify-content: space-between;"> <span>990 feet from the South line and</span> <span>990 feet from the East line</span> </div>					
Ground Level Elev. <b>7183</b>	Producing Formation <b>Mesaverde</b>	Pool <b>Blanco Mesaverde</b>		Dedicated Acreage: <b>320 (2 wells)</b> Acres	

1. Outline the acreage dedicated to the subject well by colored pencil or hatchure marks on the plat below.
2. If more than one lease is dedicated to the well, outline each and identify the ownership thereof (both as to working interest and royalty).
3. If more than one lease of different ownership is dedicated to the well, have the interests of all owners been consolidated by communitization, unitization, force-pooling, etc?

☐ Yes   ☐ No   If answer is "yes," type of consolidation \_\_\_\_\_

If answer is "no," list the owners and tract descriptions which have actually been consolidated. (Use reverse side of this form if necessary.) \_\_\_\_\_

No allowable will be assigned to the well until all interests have been consolidated (by communitization, unitization, forced-pooling, or otherwise) or until a non-standard unit, eliminating such interests, has been approved by the Commission.



**CERTIFICATION**

I hereby certify that the information contained herein is true and complete to the best of my knowledge and belief.

Name A. D. Bond A.D. Bond  
 Position Regulatory Engineering Coordinator  
 Company Mobil Oil Corporation

Date September 16, 1976

I hereby certify that the well location shown on this plat was plotted from field notes of actual surveys made by me or under my supervision and that the same is true and correct to the best of my knowledge and belief.

H. A. Carson, Jr.  
 Date Surveyed July 26, 1976

Registered Professional Engineer and/or Land Surveyor

H. A. Carson, Jr.

Certificate No.  
**5063**