

Denny S. Faust
DEPUTY OIL & GAS INSPECTOR

JICARILLA APACHE TRIBE
ENVIRONMENTAL PROTECTION OFFICE
P.O. BOX 507
DULCE, NEW MEXICO 87528

FEB 28 1997

SUBMIT COPY 1
NATURAL RESOURCE DEPT
AND OIL & GAS ADMINISTRATION

RECEIVED
OCT 31 1998

OIL COAL DIV

PIT REMEDIATION AND CLOSURE REPORT

Operator: PNM Gas Services Telephone: 324-3763
Address: 603 W. Elm Farmington, New Mexico 87401
Facility or Well Name: Jicarilla F-4 (Meridian)
Location: Unit or Qtr/Qtr Sec E Sec 33 T 26N R 4W County Rio Arriba
Pit Type: Separator ☒ Dehydrator ☐ Other ☐
Land Type: Jicarilla Apache

Pit Location: Pit dimensions: length 20', width 19', depth 10'
(Attach diagram)
Reference: wellhead ☒ other ☐
Footage from reference: 111'
Direction from reference: 75 Degrees East North of East
 of
 West South

Depth To Groundwater:

(Vertical distance from
contaminants to seasonal
high water elevation of
groundwater)

Less than 50 feet (20 points)
50 feet to 99 feet (10 points)
Greater than 100 feet (0 points) 0

Distance to an Ephemeral Stream

(Downgradient dry wash greater than
ten feet in width)

Less than 100 feet (10 points)
Greater than 100 feet (0 points) 0

Distance to Nearest Lake, Playa, or Watering Pond

(Downgradient lakes, playas and
livestock or wildlife watering ponds)

Less than 100 feet (10 points)
Greater than 100 feet (0 points) 0

Wellhead Protection Area:

(Less than 200 feet from a private
domestic water source, or: less than
1000 feet from all other water sources)

Yes (20 points)
No (0 points) 0

Distance To Surface Water:

(Horizontal distance to perennial
lakes, ponds, rivers, streams, creeks,
irrigation canals and ditches)

Less than 100 feet (20 points)
100 feet to 1000 feet (10 points)
Greater than 1000 feet (0 points) 0

RANKING SCORE (TOTAL POINTS): 0

Date Remediation Started: 7/9/96 Date Completed: 8/14/96

Remediation Method: Excavation X Approx. cubic yards 130
(Check all appropriate sections) Landfarmed X ~~Other~~ 130

Other _____

Remediation Location: Onsite X Offsite _____
(i.e. landfarmed onsite, name and location of offsite facility)

General Description of Remedial Action: Removed contaminated soil to a below 100 ppm head space reading on the North, East & South walls Bottom and west wall solid Rock

Groundwater Encountered: No X Yes _____ Depth _____

Final Pit: Sample location North, East, and South side walls
Closure Sampling: _____
(if multiple samples, attach sample results and diagram of sample locations and depths)

Sample depth 6'
Sample date 7/9/96 Sample time 1345

Sample Results

Soil Benzene <u>8000</u> (ppm)	<u>0.005</u>	Water: Benzene (ppb)	_____
Total BTEX (ppm)	<u>0.177</u>	Toluene (ppb)	_____
Field Headspace (ppm)	<u>9.7</u>	Ethylbenzene (ppb)	_____
TPH <u>8015</u> (ppm)	<u>5.0</u>	Total Xylenes (ppb)	_____

Groundwater Sample: Yes _____ No X (If yes, attach sample results)

I HEREBY CERTIFY THAT THE INFORMATION ABOVE IS TRUE AND COMPLETE TO THE BEST OF MY KNOWLEDGE AND BELIEF

DATE 7/9/96 PRINTED NAME Ronald A. Dedrick
SIGNATURE Ronald A. Dedrick AND TITLE E.T.

AFTER REVIEW OF THE PIT CLOSURE INFORMATION, PIT CLOSURE IS APPROVED IN ACCORDANCE TO THE JICARILLA APACHE TRIBE PIT CLOSURE ORDINANCE.

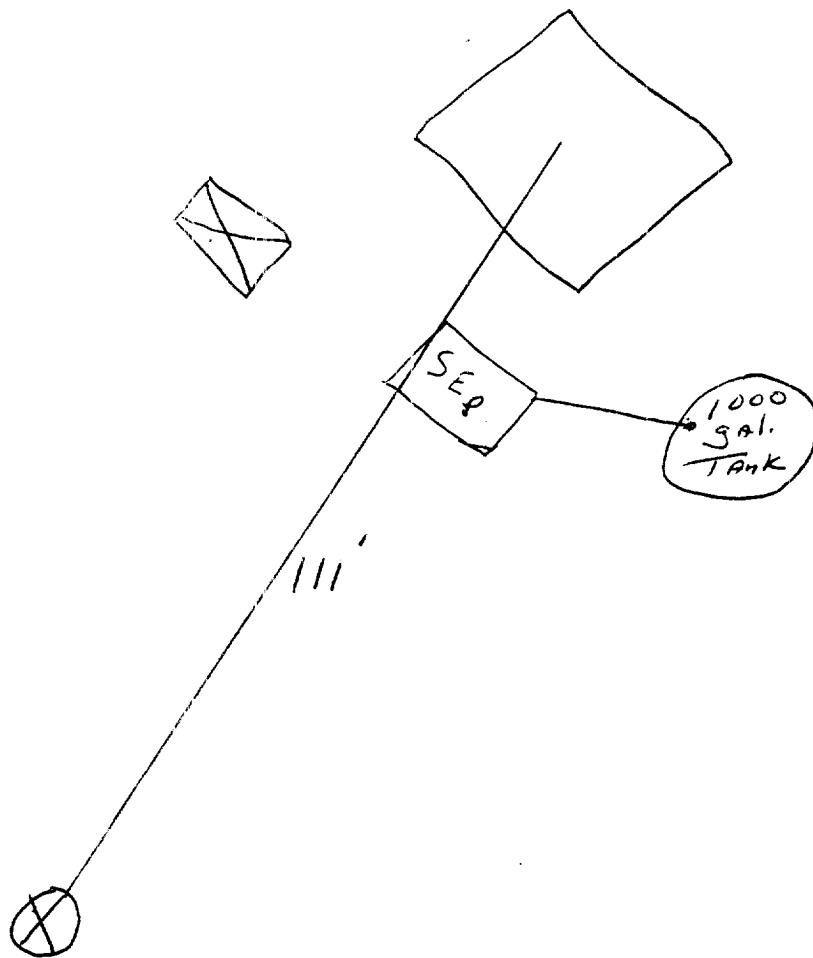
APPROVED: YES X NO _____ (REASON) SPRAY - Close

SIGNED: Karl C. Mann DATE: 7-16-96

Jicarilla T-4

Sec. 33 T26N R4W Unit F

Meridian



OFF: (505) 325-5667



LAB: (505) 325-1556

Diesel Range Organics

Attn: *Denver Bearden*
 Company: *PNM Gas Services*
 Address: *603 W. Elm*
 City, State: *Farmington, NM 87401*

Date: *15-Jul-96*
 COC No.: *4785*
 Sample No. *11487*
 Job No. *2-1000*

Project Name: ***PNM Gas Services - Jicarilla F-4 Run 12-51***Project Location: ***9607091345; 3pt. Composite***Sampled by: EP Date: *9-Jul-96* Time: *13:45*Analyzed by: DC Date: *12-Jul-96*Sample Matrix: *Soil****Laboratory Analysis***

<i>Parameter</i>	<i>Result</i>	<i>Unit of Measure</i>	<i>Detection Limit</i>	<i>Unit of Measure</i>
<i>Diesel Range Organics (C10 - C28)</i>	<i><5.0</i>	<i>mg/kg</i>	<i>5.0</i>	<i>mg/kg</i>

Quality Assurance ReportDRO QC No.: *0475-QC****Calibration Check***

<i>Parameter</i>	<i>Method Blank</i>	<i>Unit of Measure</i>	<i>True Value</i>	<i>Analyzed Value</i>	<i>% Diff</i>	<i>Limit</i>
<i>Diesel Range (C10 - C28)</i>	<i><5.0</i>	<i>ppm</i>	<i>2,000</i>	<i>1,832</i>	<i>8.4</i>	<i>15%</i>

Matrix Spike

<i>Parameter</i>	<i>1 - Percent Recovered</i>	<i>2 - Percent Recovered</i>	<i>Limit</i>	<i>%RSD</i>	<i>Limit</i>
<i>Diesel Range (C10-C28)</i>	<i>107</i>	<i>106</i>	<i>(70-130)</i>	<i>0</i>	<i>20%</i>

Method - SW-846 EPA Method 8015A mod. - Nonhalogenated Volatile Hydrocarbons by Gas ChromatographyApproved by: *[Signature]*Date: *7/15/96*

P.O. BOX 2606 • FARMINGTON, NM 87499

- TECHNOLOGY BLENDING INDUSTRY WITH THE ENVIRONMENT -

OFF: (505) 325-5667



LAB: (505) 325-1556

AROMATIC VOLATILE ORGANICS

Attn: *Denver Bearden*
Company: *PNM Gas Services*
Address: *603 W. Elm*
City, State: *Farmington, NM 87401*

Date: *15-Jul-96*
COC No.: *4785*
Sample No.: *11487*
Job No.: *2-1000*

Project Name: *PNM Gas Services - Jicarilla F-4 Run 12-51*
Project Location: *9607091345; 3pt. Composite*
Sampled by: *EP* Date: *9-Jul-96* Time: *13:45*
Analyzed by: *DC* Date: *12-Jul-96*
Sample Matrix: *Soil*

Laboratory Analysis

Component	Result	Unit of Measure	Detection Limit	Unit of Measure
<i>Benzene</i>	<i>0.5</i>	<i>ug/kg</i>	<i>0.2</i>	<i>ug/kg</i>
<i>Toluene</i>	<i>2.0</i>	<i>ug/kg</i>	<i>0.2</i>	<i>ug/kg</i>
<i>Ethylbenzene</i>	<i>0.4</i>	<i>ug/kg</i>	<i>0.2</i>	<i>ug/kg</i>
<i>m,p-Xylene</i>	<i>7.2</i>	<i>ug/kg</i>	<i>0.2</i>	<i>ug/kg</i>
<i>o-Xylene</i>	<i>7.6</i>	<i>ug/kg</i>	<i>0.2</i>	<i>ug/kg</i>
<i>TOTAL</i>	<i>17.7</i>	<i>ug/kg</i>		

Method - *SW-846 EPA Method 8020 Aromatic Volatile Organics by Gas Chromatography*

Approved by: *[Signature]*
Date: *7/15/96*

**JICARILLA APACHE TRIBE
ENVIRONMENTAL PROTECTION OFFICE
P.O. BOX 507
DULCE, NEW MEXICO 87528**

SUBMIT COPY TO
NATURAL RESOURCE DEPT
AND OIL & GAS ADMINISTRATION

ON-SITE SOIL REMEDIATION REPORT

Operator: PNM Gas Services Telephone: 324-3763

Address: 603 W Elm Farmington, N. Mex. 87401

Facility or Well Name: Jicarilla F-4 (Meridian)

Location: Unit or Qtr/Qtr Sec F Sec. 33 T 26N R 4W County Rio Arriba

Land Type: Jicarilla Apache

Date Remediation Started: 7/9/96 Date Completed: 8/14/96

Remediation Method: Landfarmed X Approx. cubic yards 130

Composted

Other

Depth To Groundwater: (pts.) 0

Distance to an Ephemeral Stream (pts.) 0

Distance to Nearest Lake, Playa,
or Watering Pond (pts.) 0

Wellhead Protection Area: (pts.) 0

Distance To Surface Water: (pts.) 0

RANKING SCORE (TOTAL POINTS): 0

Final Closure Sampling:

Sampling Date: 8/6/96 Time: 1743

Sample Results:

Field Headspace (ppm) 43.9

TPH (ppm) 65.0 Method 8015

Other

I HEREBY CERTIFY THAT THE INFORMATION ABOVE IS TRUE AND COMPLETE TO THE BEST OF MY KNOWLEDGE AND BELIEF

DATE 8/11/96 PRINTED NAME Ronald A Dedrick

SIGNATURE Ronald A Dedrick AND TITLE E.T.

AFTER REVIEW OF THE SOIL REMEDIATION INFORMATION, ON-SITE REMEDIATION IS APPROVED IN ACCORDANCE TO THE JICARILLA APACHE TRIBE PIT CLOSURE ORDINANCE.

APPROVED: YES ✓ NO (REASON)

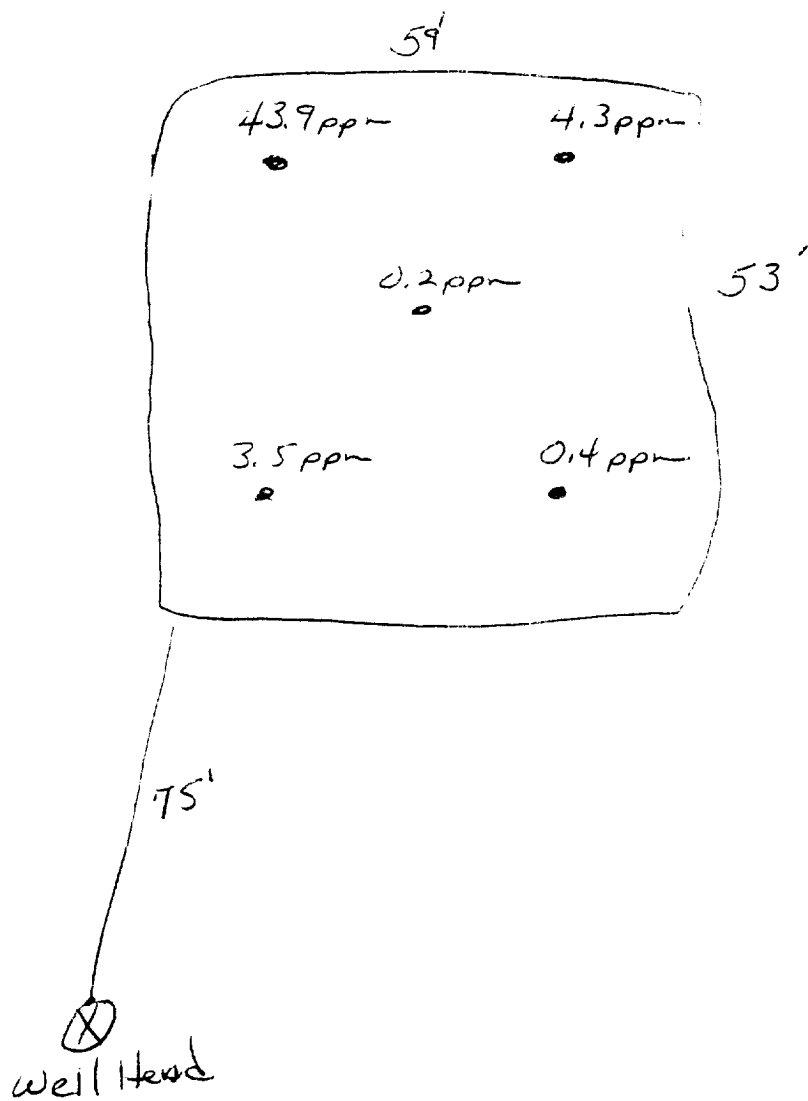
SIGNED: Karena Castillo

DATE: August 17, 1996

11/11/11 11:11 A - T

Sec. 33 T26N R4W Unit F

Meridian



OFF: (505) 325-5667



LAB: (505) 325-1556

Diesel Range Organics

Attn: *Denver Bearden*
 Company: *PNM Gas Services*
 Address: *603 W. Elm*
 City, State: *Farmington, NM 87401*

Date: *9-Aug-96*
 COC No.: *4827*
 Sample No.: *11696*
 Job No.: *2-1000*

Project Name: ***PNM Gas Services - Jicarilla F-4 Landfarm Run 12-51***
 Project Location: ***9608061743; 5pt. Composite***
 Sampled by: *RD* Date: *6-Aug-96* Time: *17:43*
 Analyzed by: *DC* Date: *9-Aug-96*
 Sample Matrix: *Soil*

Laboratory Analysis

<i>Parameter</i>	<i>Result</i>	<i>Unit of Measure</i>	<i>Detection Limit</i>	<i>Unit of Measure</i>
<i>Diesel Range Organics (C10 - C28)</i>	<i><5.0</i>	<i>mg/kg</i>	<i>5.0</i>	<i>mg/kg</i>

Quality Assurance ReportDRO QC No.: *0479-QC****Calibration Check***

<i>Parameter</i>	<i>Method Blank</i>	<i>Unit of Measure</i>	<i>True Value</i>	<i>Analyzed Value</i>	<i>% Diff</i>	<i>Limit</i>
<i>Diesel Range (C10 - C28)</i>	<i><5.0</i>	<i>ppm</i>	<i>100</i>	<i>99</i>	<i>1.1</i>	<i>15%</i>

Matrix Spike

<i>Parameter</i>	<i>1 - Percent Recovered</i>	<i>2 - Percent Recovered</i>	<i>Limit</i>	<i>%RSD</i>	<i>Limit</i>
<i>Diesel Range (C10-C28)</i>	<i>96</i>	<i>91</i>	<i>(70-130)</i>	<i>4</i>	<i>20%</i>

Method - SW-846 EPA Method 8015A mod. - Nonhalogenated Volatile Hydrocarbons by Gas Chromatography

Approved by: *[Signature]*
 Date: *8/9/96*

P.O. BOX 2606 • FARMINGTON, NM 87499

- TECHNOLOGY BLENDING INDUSTRY WITH THE ENVIRONMENT -