

**NEW MEXICO OIL CONSERVATION COMMISSION
WELL LOCATION AND ACREAGE DEDICATION PLAT**

Form C-102
Supersedes C
Effective 1-1-

All distances must be from the outer boundaries of the Section.

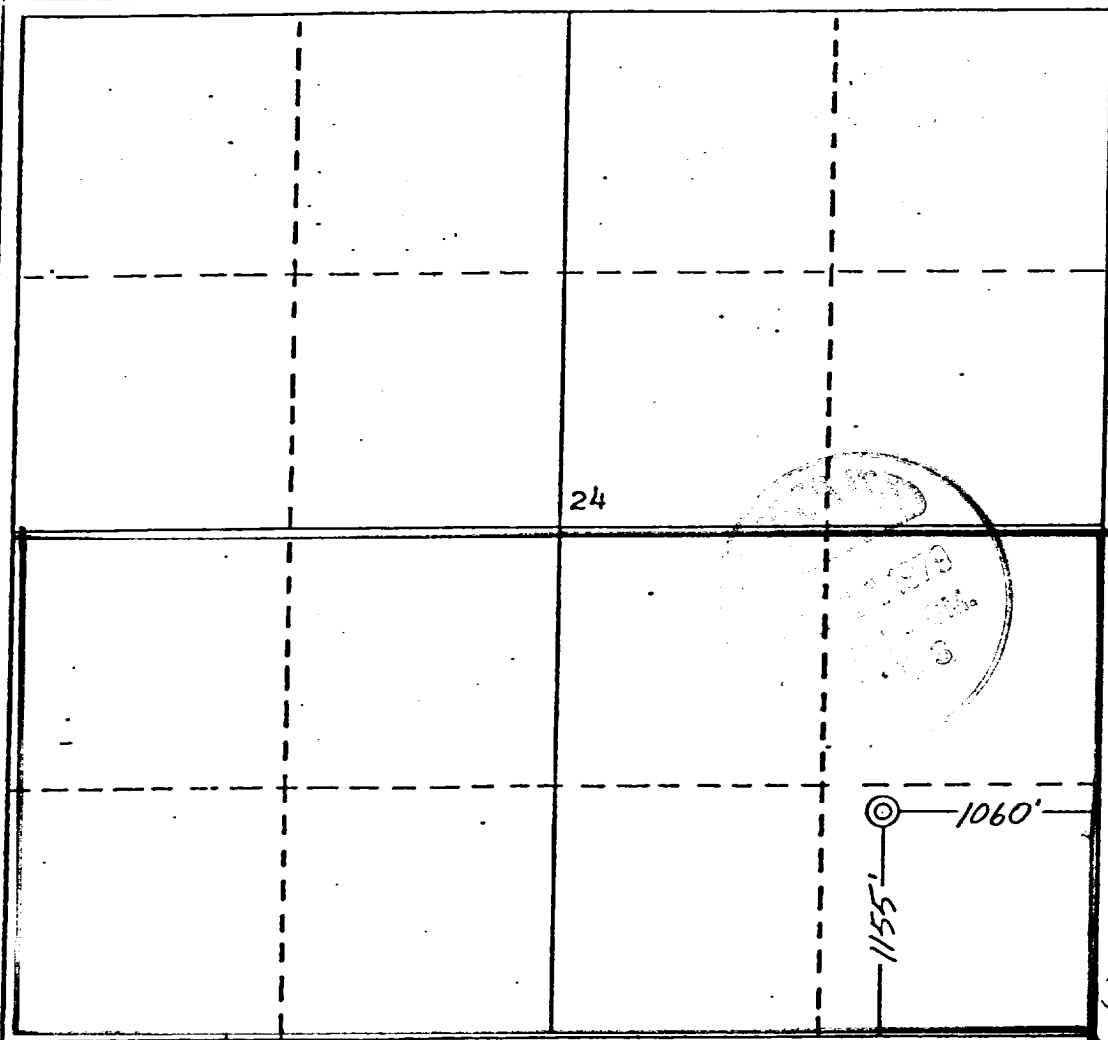
Operator SUPRON ENERGY CORPORATION		Lease JICARILLA "A"		Well No. 23
Unit Letter P	Section 24	Township 26 NORTH	Range 4 WEST	County RIO ARRIBA
Actual Postage Location of Well: 1155 feet from the SOUTH line and 1060 feet from the EAST line				
Ground Level Elev. 7270	Producing Formation MESAVERDE	Pool BLANCO		Dedicated Acreage S1/2 320

1. Outline the acreage dedicated to the subject well by colored pencil or hachure marks on the plat below.
2. If more than one lease is dedicated to the well, outline each and identify the ownership thereof (both as to working interest and royalty).
3. If more than one lease of different ownership is dedicated to the well, have the interests of all owners been consolidated by communitization, unitization, force-pooling, etc?

Yes No If answer is "yes," type of consolidation _____

If answer is "no," list the owners and tract descriptions which have actually been consolidated. (Use reverse side of this form if necessary.) _____

No allowable will be assigned to the well until all interests have been consolidated (by communitization, unitization, forced-pooling, or otherwise) or until a non-standard unit, eliminating such interests, has been approved by the Commission.



CERTIFICATION

I hereby certify that the information contained herein is true and complete to the best of my knowledge and belief.

Rudy D. Motto
Name

Rudy D. Motto

Position

Area Superintendent

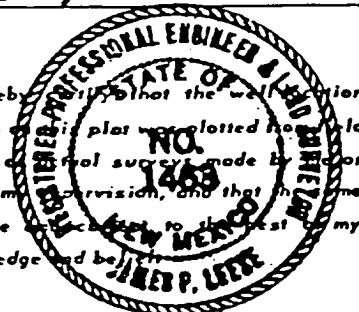
Company

SUPRON ENERGY CORPORATION

Date

April 10, 1979

I hereby certify that the information shown on this plat was plotted from field notes and that such notes were made under my supervision, and that the information is true and correct to the best of my knowledge and belief.



Date Surveyed

4 April 1979

Registered Professional Engineer and/or Land Surveyor

James P. Leese
James P. Leese

Certificate No.

1463

1230'

R. 4 W.

20 MI. TO N. MEX 17

4557 11 SW
PINE LAKE 1 R. 3 W.

.905

10' 306

SUPRON ENERGY CORPORATION
JICARILLA "A" #23
SE 1/4 SE 1/4 Sec. 24, T26N, R4W
Rio Arriba County, New Mexico

Tapicito

PIPELINE

PIPELINE

Bull

Well

Gal Well

Bull Well

RESERVOIR



Jicarilla "A" No. 23
Unit P, Sec. 24, Twp. 26N, Rge. 4W
Rio Arriba County, New Mexico

SUPPLEMENT TO FORM 9-331C

1. The Geologic name of the surface formation is "Wasatch".

2. The estimated tops of important Geologic markers are:

A. Base of Ojo Alamo	3500
B. Top of Pictured Cliffs	3925
C. Top of Cliff House	5545
D. Top of Point Lookout	5945

3. The estimated depth at which anticipated water, oil, or other mineral - bearing formations are expected to be encountered are:

A. Base of Ojo Alamo	3500 - water
B. Top of Pictured Cliffs	3925 - gas
C. Top of Cliff House	5545 - gas
D. Top of Point Lookout	5945 - gas

4. The casing program is shown on form 9-331C and all casing is new.

5. The lessee's pressure - control equipment schematics are attached, along with minimum specifications, testing procedures, and frequencies.

6. The type, estimated volumes, and characteristics of the circulating media are as follows:

- A. 0 - 250 ft. natural mud.
- B. 250 - 4300 ft. Permaloid non-dispersed mud 167 sx gel, 67 sx permaloid, 10 sx C.M.C.
- C. 4300 - 6300 ft. natural gas or air.

7. The auxiliary equipment to be used will be floats at the bit and a sub on the floor with a full-opening valve to be stabbed into the drill pipe when the kelly is not in the string.

8. This well is in an area which is partially developed; therefore we will not have a testing and coring program. The logging program will be as follows:

- A. E.S. Induction.
- B. Gamma Ray Density.
- C. Gamma Ray Correlation.
- D. Cement Bond Log.

9. We do not expect to find any abnormal pressures, temperatures or hydrogen sulphide problems in this partially - developed area.

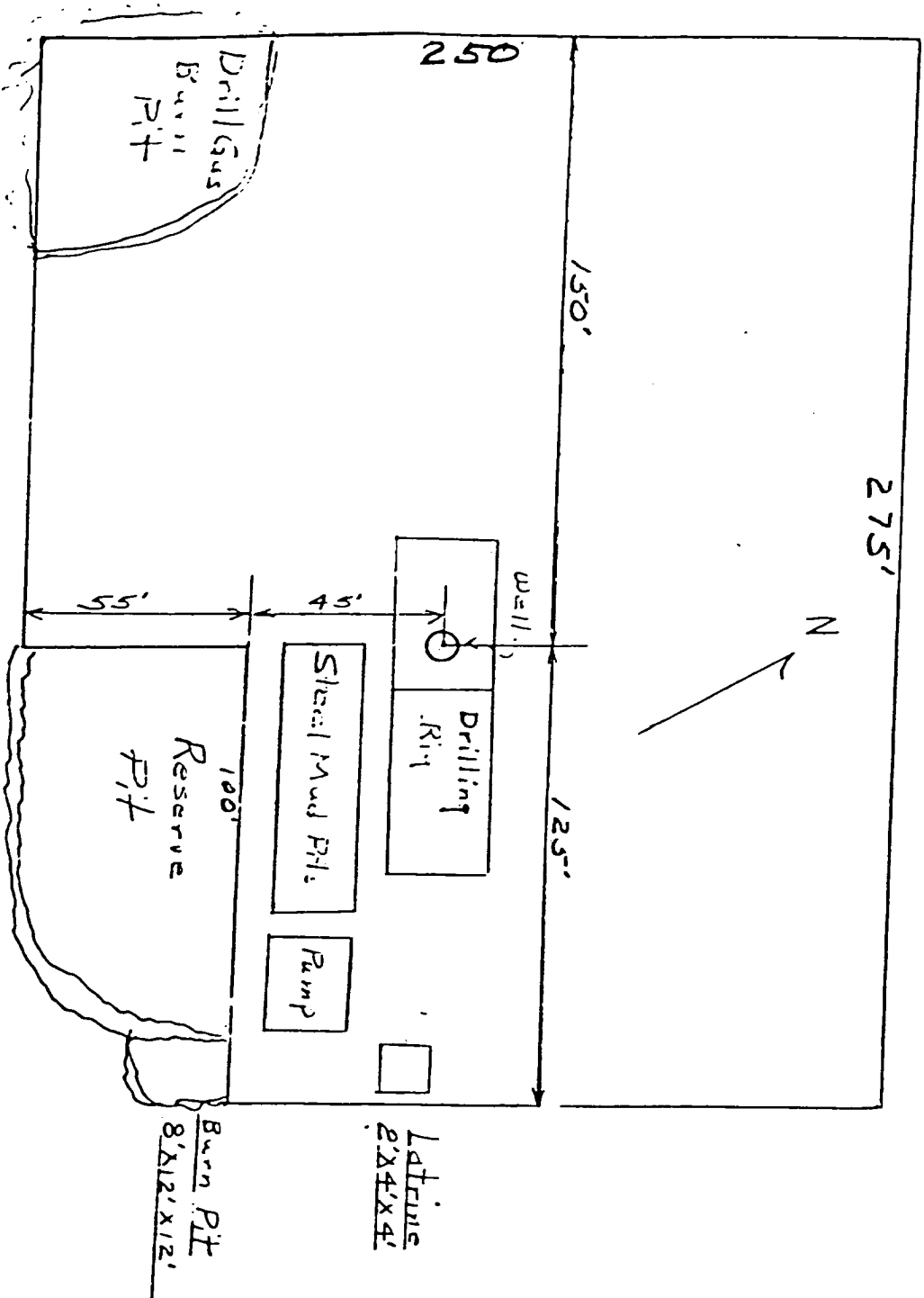
10. The anticipated starting date for this well is 7-1-79.

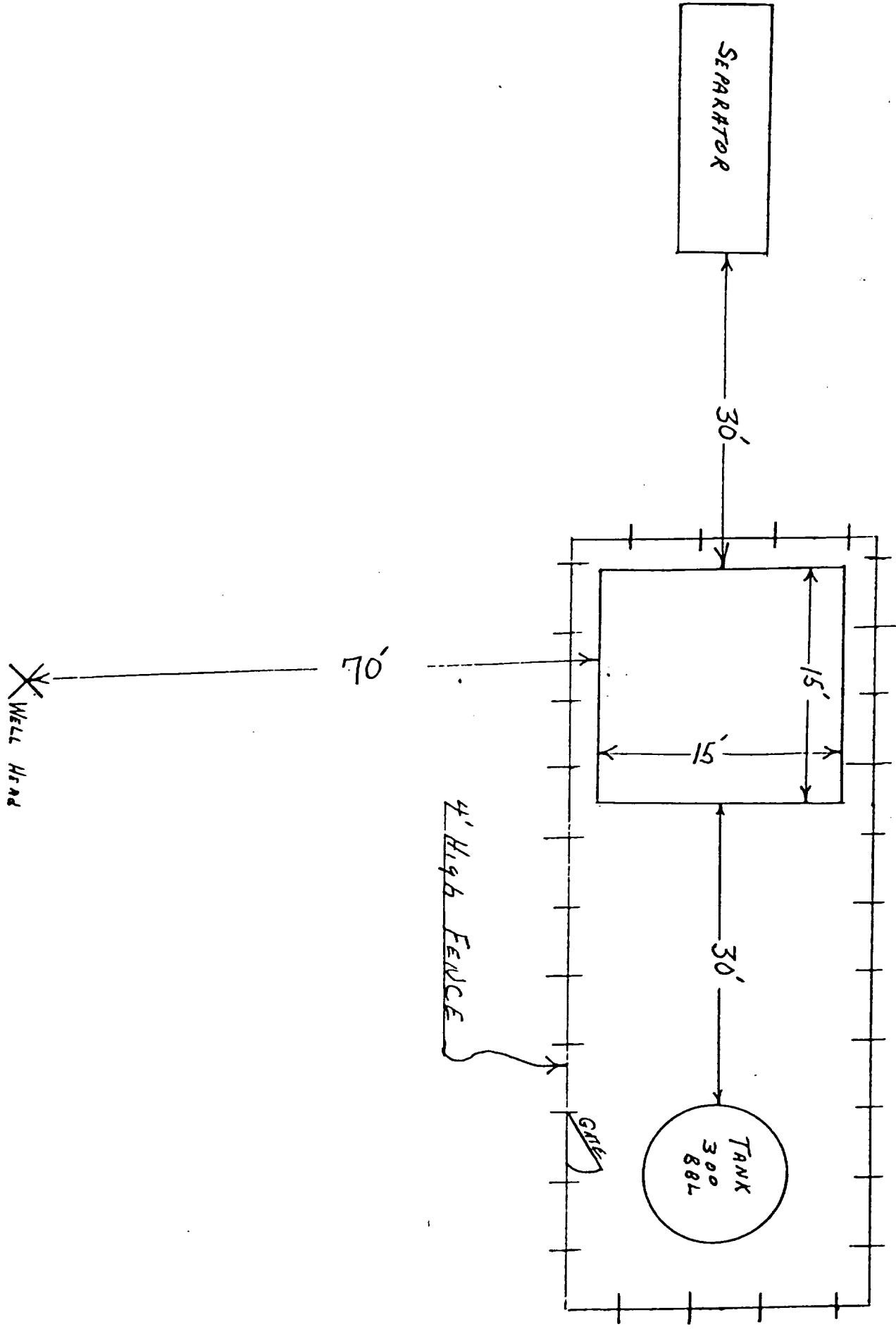
SUPRON ENERGY CORPORATION

LOCATION AND EQUIPMENT LAYOUT

JICARILLA "A" NO. 23

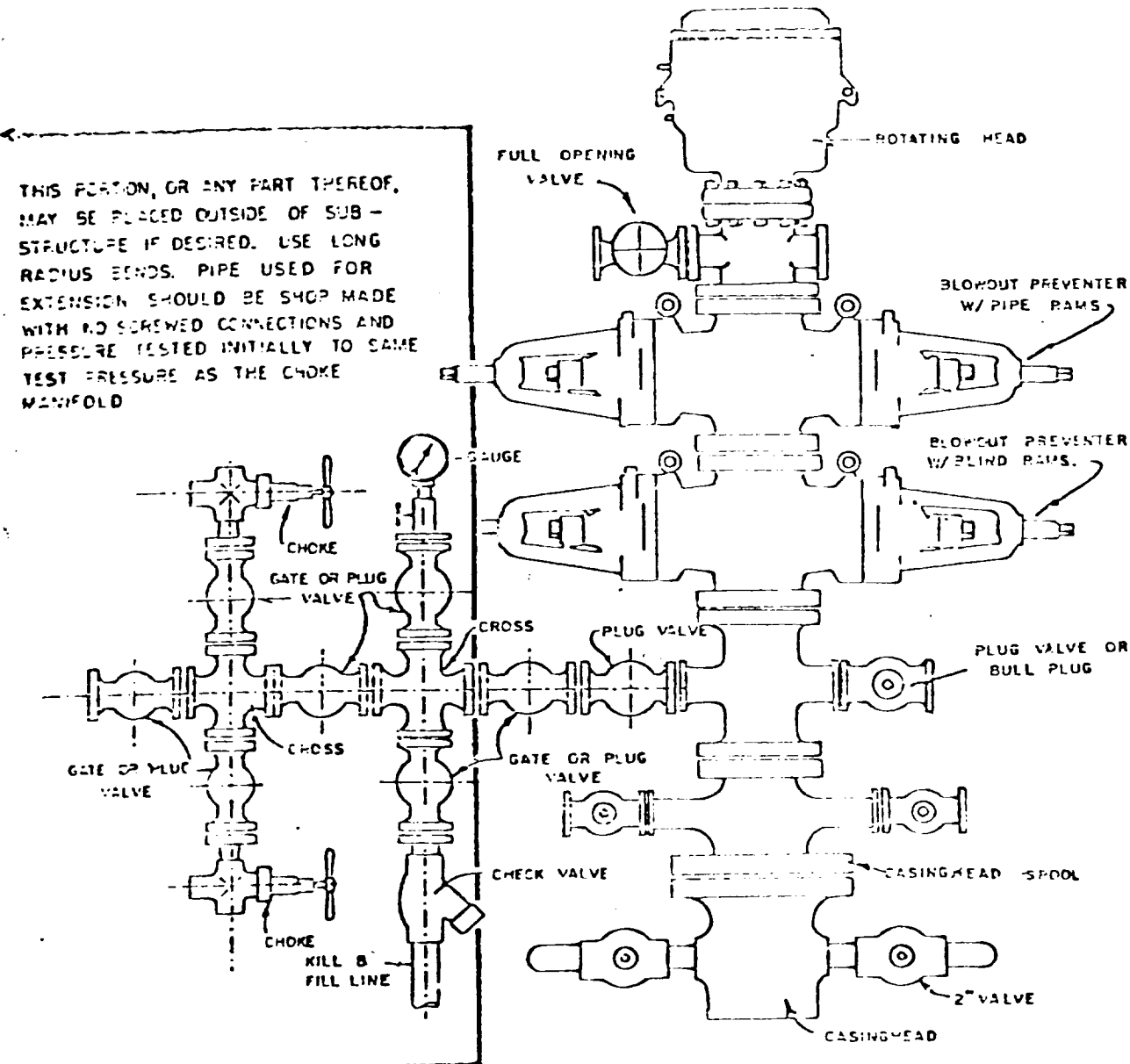
1155 Feet from the South line and 1060 feet from the East line of Section 24, Township 26 North, Range 4 West, Rio Arriba County, New Mexico.





Blowout Preventer will be tested daily and prior to drilling out with the results to be logged on the drillers report.

The B.O.P. and all valve and fittings are rated at 3000 psi working pressure, and hydraulically operated

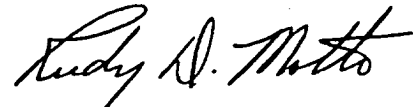


BLOWOUT PREVENTER HOOKUP

SUPRON ENERGY CORPORATION
Post Office Box 808
FARMINGTON, NEW MEXICO 87401

I hereby certify that I, or persons under my direct supervision, have inspected the proposed drillsite and access route; that I am familiar with the conditions which presently exist; that the statements made in this plan are, to the best of my knowledge, true and correct; and, that the work associated with the operations proposed herein will be performed by SUPRON ENERGY CORPORATION and its contractors subcontractors in conformity with this plan and the terms and conditions under which it is approved.

SUPRON ENERGY CORPORATION



Rudy D. Motto
Area Superintendent
Phone: 325-3587