

UNITED STATES
DEPARTMENT OF THE INTERIOR
GEOLOGICAL SURVEY

APPLICATION FOR PERMIT TO DRILL, DEEPEN, OR PLUG BACK

1a. TYPE OF WORK
DRILL ☒ DEEPEN ☐ PLUG BACK ☐

b. TYPE OF WELL
OIL WELL ☐ GAS WELL ☒ OTHER ☐ SINGLE ZONE ☐ MULTIPLE ZONE ☒

2. NAME OF OPERATOR
Southland Royalty Company

3. ADDRESS OF OPERATOR
P. O. Drawer 570, Farmington, New Mexico 87401

4. LOCATION OF WELL (Report location clearly and in accordance with any State requirements.)
At surface 1070' FSL & 1840' FWL
At proposed prod. zone

14. DISTANCE IN MILES AND DIRECTION FROM NEAREST TOWN OR POST OFFICE*
42 miles south/southwest of Dulce, New Mexico

15. DISTANCE FROM PROPOSED* LOCATION TO NEAREST PROPERTY OR LEASE LINE, FT. (Also to nearest drig. unit line, if any)
18. DISTANCE FROM PROPOSED LOCATION* TO NEAREST WELL, DRILLING, COMPLETED, OR APPLIED FOR, ON THIS LEASE, FT.

16. NO. OF ACRES IN LEASE
19. PROPOSED DEPTH
6209'

17. NO. OF ACRES ASSIGNED TO THIS WELL
20. ROTARY OR CABLE TOOLS
Rotary

21. ELEVATIONS (Show whether DF, RT, GR, etc.)
7072' GR

22. APPROX. DATE WORK WILL START*
June 1, 1979

5. LEASE DESIGNATION AND SERIAL NO.
Jicarilla 101

6. IF INDIAN, ALLOTTED OR TRIBE NAME

7. UNIT AGREEMENT NAME

8. FARM OR LEASE NAME
Jicarilla 101

9. WELL NO.
#8

10. FIELD AND POOL OR WILDCAT
Blanco Mesa Verde

11. SEC., T., R., M., OR BLK. AND SURVEY OR AREA
Section 12, T26N, R4W

12. COUNTY OR PARISH
Rio Arriba

13. STATE
New Mexico

23. PROPOSED CASING AND CEMENTING PROGRAM

SIZE OF HOLE	SIZE OF CASING	WEIGHT PER FOOT	SETTING DEPTH	QUANTITY OF CEMENT
12-1/4"	9-5/8"	36#	200'	130 cu. ft.
8-3/4"	7"	20#	4024'	223 cu. ft.
6-1/4"	4-1/2"	10.5#	3874'-6209'	410 cu. ft.
	2-3/8"	4.7#	6150'	
	1 1/4"	2.4#	3800'	

Surface formation is San Jose.

Top of Ojo Alamo sand is at 3139'.

Top of Pictured Cliffs sand is at 3784'.

Fresh water mud will be used to drill from surface to intermediate depth. *

An air system will be used to drill from intermediate depth to total depth.

It is anticipated that a GR-Density and a GR-Induction log will be run at total depth.

No poisonous gases or abnormal pressures are anticipated in this well.

It is expected that this well will be drilled before September 1, 1979. This depends on time required for approvals, rig availability and the weather.

Gas is dedicated.

*It is anticipated that a GR-Density and IES log will be run at intermediate depth.

IN ABOVE SPACE DESCRIBE PROPOSED PROGRAM: If proposal is to deepen or plug back, give data on present productive zone and proposed new productive zone. If proposal is to drill or deepen directionally, give pertinent data on subsurface locations and measured and true vertical depths. Give blowout preventer program, if any.

24.

SIGNED

TITLE District Production Manager May 24, 1979

(This space for Federal or State office use)

PERMIT NO.

APPROVAL DATE

APPROVED BY

TITLE

CONDITIONS OF APPROVAL, IF ANY:

ok Frank

*See Instructions On Reverse Side

U. S. GEOLOGICAL SURVEY
WASHINGTON, D. C. 20508

**NEW MEXICO OIL CONSERVATION COMMISSION
WELL LOCATION AND ACREAGE DEDICATION PLAT**

Form C-102
Supersedes C-128
Effective 1-1-65

All distances must be from the outer boundaries of the Section.

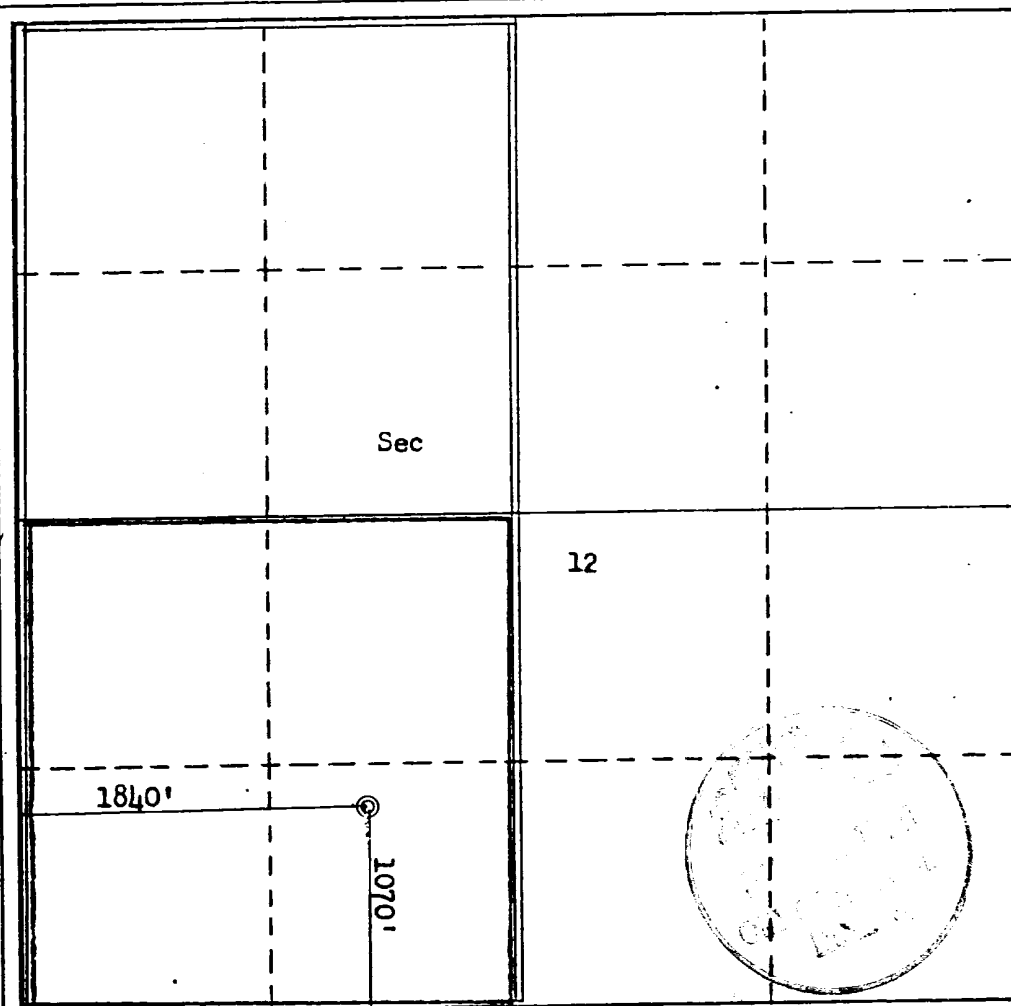
Operator Southland Royalty Co.			Lease Jicarilla 101		Well No. 8
Unit Letter N	Section 12	Township 26N	Range 4W	County Rio Arriba	
Actual Footage Location of Well: 1070' feet from the South line and 1840' feet from the West line					
Ground Level Elev. 7072	Producing Formation Mesa Verde- PC	Pool Blanco	Dedicated Acreage: 320/160		Acres

1. Outline the acreage dedicated to the subject well by colored pencil or hachure marks on the plat below.
2. If more than one lease is dedicated to the well, outline each and identify the ownership thereof (both as to working interest and royalty).
3. If more than one lease of different ownership is dedicated to the well, have the interests of all owners been consolidated by communitization, unitization, force-pooling, etc?

☐ Yes ☐ No If answer is "yes," type of consolidation _____

If answer is "no," list the owners and tract descriptions which have actually been consolidated. (Use reverse side of this form if necessary.) _____

No allowable will be assigned to the well until all interests have been consolidated (by communitization, unitization, forced-pooling, or otherwise) or until a non-standard unit, eliminating such interests, has been approved by the Commission.



CERTIFICATION

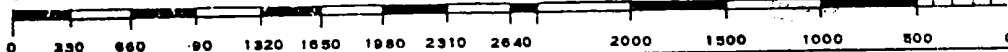
I hereby certify that the information contained herein is true and complete to the best of my knowledge and belief.

Name _____
 District Production Manager
 Position _____
 Southland Royalty Company
 Company _____
 May 24, 1979
 Date

I hereby certify that the well location shown on this plat was plotted from field notes of actual surveys made by me or under my supervision, and that the same is true and correct to the best of my knowledge and belief.

Date Surveyed _____
January 24, 1979
 Registered Professional Engineer
 and/or Land Surveyor
Fred B. Kerr, Jr.
 Certificate No. _____

3950



DRILLING SCHEDULE - JICARILLA 101 #8

Location: 1070' FSL & 1840' FWL, Section 12, T26N, R4W, Rio Arriba, New Mexico

Field: Blanco Mesaverde /Blanco Pictured Cliffs Elevation: 7072' GR

Geology:

Formation Tops:	Ojo Alamo	3159'	Cliff House	5439'	
	Fruitland	3624'	Point Lookout	5859'	
	Pictured Cliffs	3774'	Total depth	6209'	(Add 50'
	Intermediate TD	4024'			if hole
					gets wet)

Logging Program: Run IES and Density at intermediate TD.
GR-Density and GR-Induction at total depth.

Coring Program: None

Natural Gauges: Gauge at last connection above Cliff House, Point Lookout and total depth.
Gauge any increase in gas flow.

Drilling:

Contractor:	Tool Pusher:
	SRC Ans. Service: 325-1841
SRC Representative:	Dispatch Number: 325-7391

Mud Program: Fresh water mud from surface to Intermediate total depth.
Air from intermediate to total depth.

Materials:

Casing Program:	Hole Size	Depth	Casing Size	Wt. & Grade
	12-1/4"	200'	9-5/8"	36# K-55
	8-3/4"	4024'	7"	20# K-55
	6-1/4"	3874'-6209'	4-1/2"	10.5# K-55

Float Equipment:

9-5/8" Surface Casing: Pathfinder, type "A", guide shoe.

7" Intermediate Casing: Pathfinder, type "A", guide shoe. Pathfinder self-fill insert float valve. Five (5) Pathfinder rigid centralizers. Run float 2 joints above shoe. Run centralizers every other joint above shoe.

4-1/2" Liner: Pathfinder, type "AP", guide shoe. Pathfinder, type "A", flapper float collar.

Tubing:

Wellhead Equipment: 9 5/8" X 10", 2000# casing head.
10", 2000# X 6", 2000# tubing head.

Cementing:

9 5/8" surface casing: 130 cu. ft. 110 sx Class "B" with 1/4# gel flake per sack and 3% CaCl_2 (100% excess).

7" intermediate casing: 223 cu. ft. 110 sx 50/50, Class "B", Poz with 6% gel. Mix with 7.2 gals water per sack to weigh 12.85 ppg. Tail in with 50 sacks of Class "B" with 2% CaCl_2 . If lost circulation occurs, add 1/4# cello flake per sack (70% excess to cover Ojo Alamo).

4 1/2" liner: 410 cu. ft. Precede cement with 20 bbls. gelled water. Cement with 275 sx of 50/50, Class "B", Poz with 6% gel, 1/4# cello flake and .6% Halad 9. Mix cement with 7.2 gals water per sack to weigh 12.85 ppg (70% excess). If hole gets wet and mist drilling is required, use 100% excess to circulate liner.
(330 sx)

L. O. Van Ryan
District Production Manager

BJM/kde



Southland Royalty Company

February 28, 1979

United States Geological Survey
P. O. Box 1809
Durango, Colorado

Attention: Mr. Jerry Long

Dear Sir:

Enclosed please find map showing existing roads and planned access roads to Southland Royalty Company's Jicarilla 101 #8 well. The location of tank batteries and flow lines will be on location with well. A burn pit will be provided for disposal of trash. Cuttings, drilling fluid and produced fluids will be put into the reserve pit and properly disposed of depending on amount and type of fluids.

Contractor will furnish restroom facilities on location.

There will be no air strips or camps.

Also, enclosed is a location layout showing approximate location of rig, pits, pipe racks and cut required to build this location.

Water supply will be water holes along Tapacito Wash. All water will be transported by truck and stored on location.

The location will be restored according to Bureau of Indian Affairs standards. This work will begin when all related construction is finished.

Mr. Ross Lankford will be Southland Royalty Company's field representative supervising these operations.

Yours truly,

L. O. Van Ryan
District Production Manager

LOVR/dg



Southland Royalty Company

United States Geological Survey
P. O. Box 1809
Durango, Colorado

Attention: Mr. Jerry Long

Dear Sir:

I hereby certify that I, or persons under my direct supervision, have inspected the proposed drillsite and access route; that I am familiar with the conditions which presently exist; that the statements made in this plan are, to the best of my knowledge, true and correct; and, that the work associated with the operations proposed herein be performed by Southland Royalty Company and its contractors and subcontractors in conformity with this plan and the terms and conditions under which it is approved.

Date: February 28, 1979

Name: *William R. Ryan*

Title: District Production Manager



Southland Royalty Company

February 28, 1979

United States Geological Survey
P. O. Box 1809
Durango, Colorado

Attention: Blowout Preventer Plan

Dear Sir:

All drilling and completion rigs will be equipped with 6" or larger double gate hydraulic blowout preventers and a hydraulic operated closing unit with steel lines.

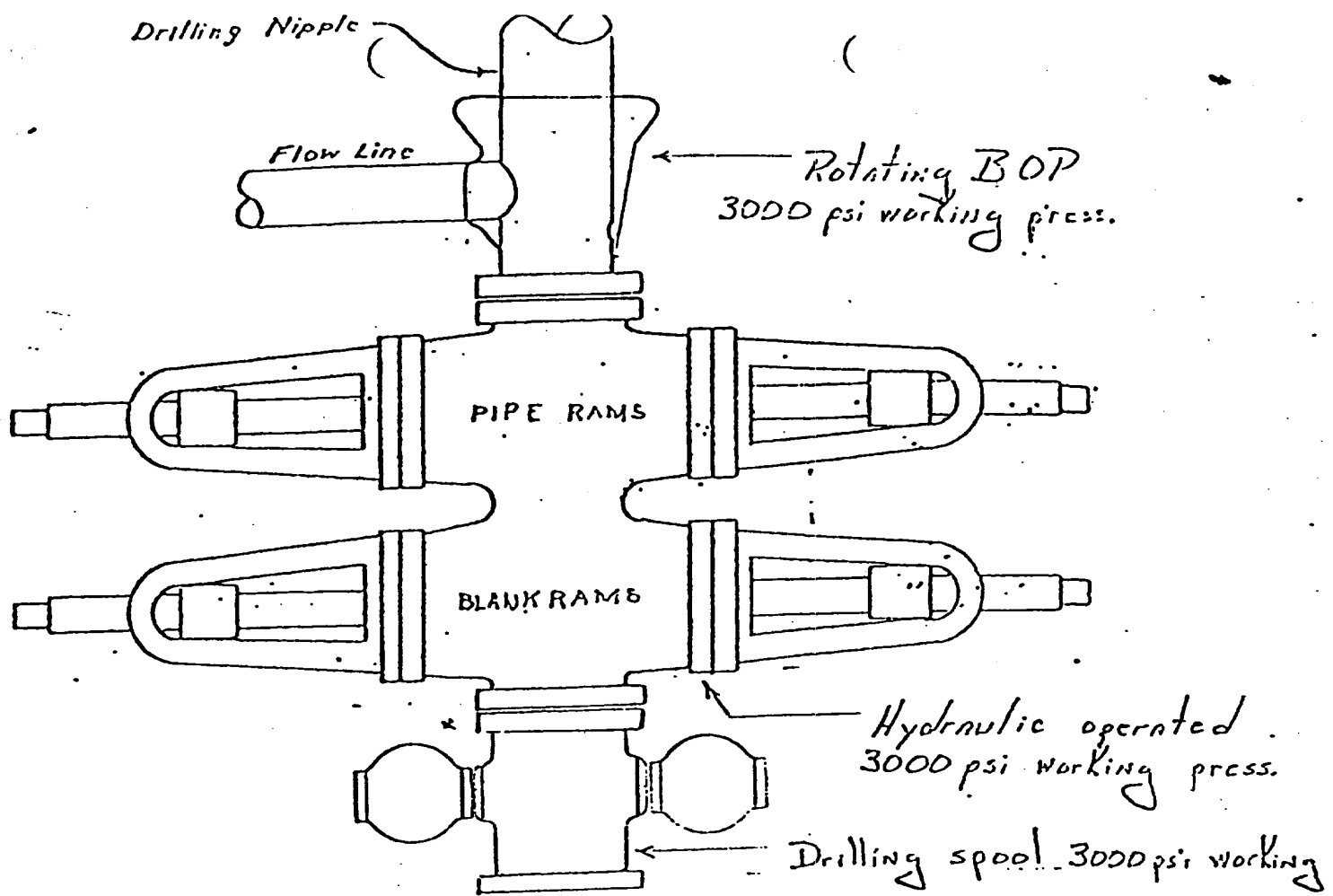
The preventer is 3000# working pressure and 6000# test.

All crews will be thoroughly trained in the operation of this preventer. The preventer will be tested frequently enough to insure proper operation.

Yours truly,





L. O. Van Ryan
District Production Manager

LOVR/dg

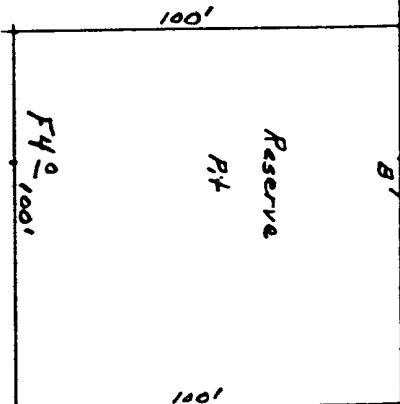


Preventers and spools are to have
through bore of 6" - 3000# PSI or larger.



- PROPOSED LOCATION 
- EXISTING LOCATION 
- PROPOSED ROAD 
- EXISTING ROADS 

Vicinity Map for
SOUTHLAND ROYALTY CO. #8 JICARILLA 101
1070' FSL 1840' FWL Sec 12-T26N-R1W
RIO ARriba COUNTY, NEW MEXICO



Vert: 1"=40'	C-C'	ϕ	Horiz: 1"=100'

[illegible]

KERR LAND SURVEYING
Date: 1-24-79