

Han-San, Inc.
P.O. Box 349
Deming, New Mexico 88031

December 2, 1984

Bureau of Land Management
Caller Service 4104
Farmington, New Mexico 87499

RECEIVED
DEC 10 1984
BUREAU OF LAND MANAGEMENT

NM 012833 -

Dear Sir,

The gas that is now being vented on the Grevey well No. 4-Y located 1870' FSL and 335' FWL of Section 26, T. 26N., R. 1E., Rio Arriba County, New Mexico is too small to measure and is therefore not feasible to market and the conservation of the gas would be an overwhelming expense with very little in return. So I am requesting permission to continue to vent the gas.

Enclosed is the engineering data showing the gas too small to measure.

Sincerely,

Beth A. Charles

Beth A. Charles

President

All forthcoming copies of Monthly Reports of Operations (Form 3160-6) must indicate estimated volume vented.

Approval expires 12/6/85

NMOCD

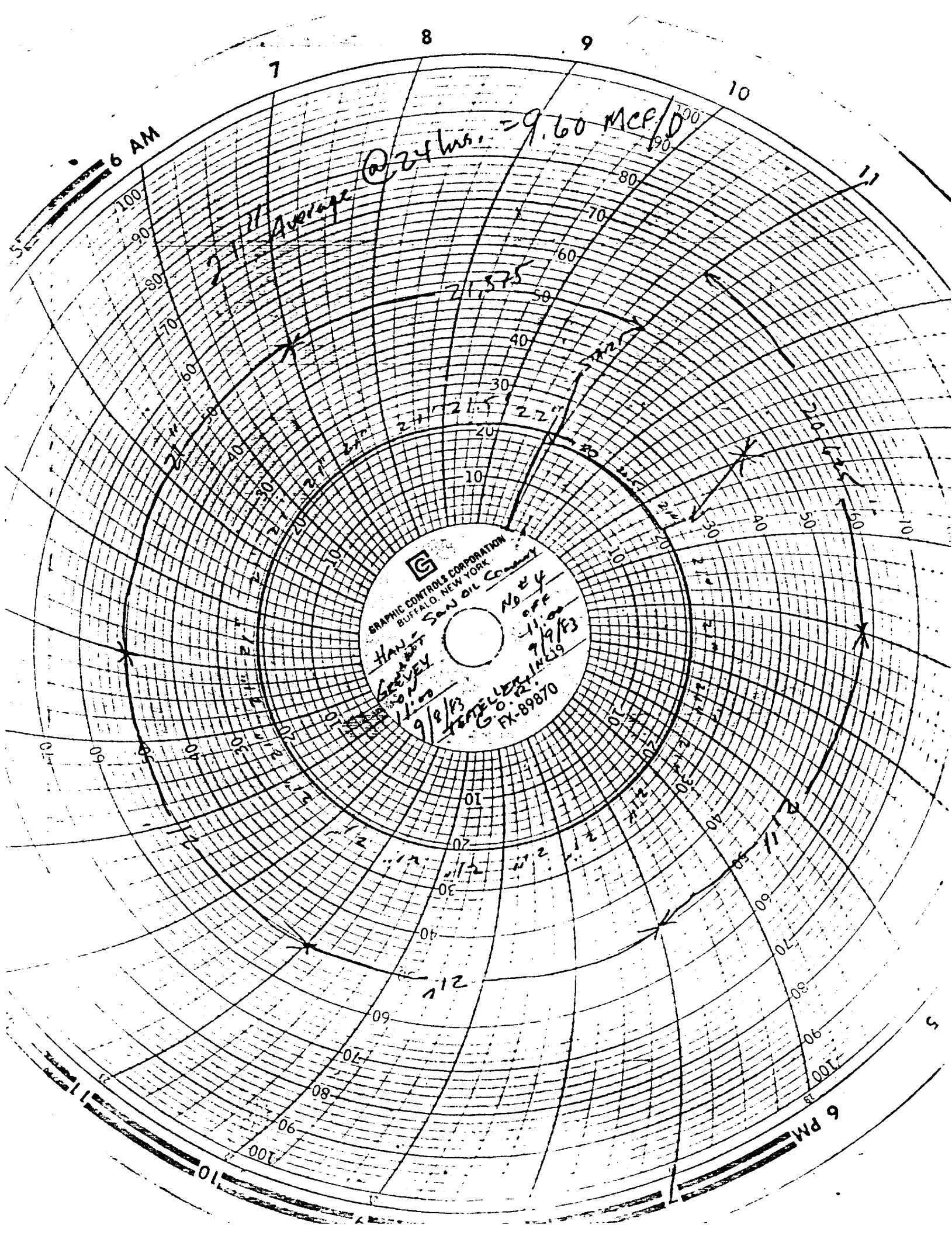
RECEIVED
DEC 10 1984

OIL CON. DIV.
DIST. 3

APPROVED
AS AMENDED

(SGD. *M. Millenbach*)
DEC 06 1984

M. MILLENBACH
AREA MANAGER



6 AM

Average @ 24 hrs. = 9.60 McF/D

211 Average

211

212

213

214

215

216

217

218

219

220

221

222

223

224

225

226

227

228

229

230

231

232

233

234

GRAPHIC CONTROLS CORPORATION
BUFFALO, NEW YORK
SAN OIL COMPANY

No. 24 OFF
11.00
9/9/53
HAW - GEEVEY
11.00
9/8/53
TEFFELER INC
O.P.
FX-89870

6 PM

TEFTELLER, INC.
RESERVOIR ENGINEERING DATA
Midland, Texas

Well : GREVEY NO. 4

Page 1 of 1

Field : PUERTO CHIQUITO

~~RECEIVED~~ 2-13891-GOR

DEC 6 1984

CHRONOLOGICAL PRESSURE AND PRODUCTION DATA

BUREAU OF LAND MANAGEMENT
FARMINGTON RESOURCE AREA

1983 Date	Status of Well	Time	Elapsed Time		Daily Rate		Wellhead Pressure		GOR
			Hrs.	Min.	Oil B/D	Gas MCF/D	Tbg.	Csq.	
9-8	Arrived on location								
"	pumping 10 spm	10:30							
"	Hook up 2" OWT	11:00	0	00					
9-9	"	11:00	24	00	15.865	9.60	TSTM	TSTM	605/1

