

30-039-22899

UNITED STATES
DEPARTMENT OF THE INTERIOR
GEOLOGICAL SURVEY

5. LEASE DESIGNATION AND SERIAL NO.

Contract #109

6. IF INDIAN, ALLOTTEE OR TRIBE NAME

Jicarilla Apache

7. UNIT AGREEMENT NAME

8. FARM OR LEASE NAME

Jicarilla B

9. WELL NO.

5E

10. FIELD AND POOL, OR WILDCAT

Basin Dakota

11. SEC., T., R., M., OR BLK. AND SURVEY OR AREA

Sec. 21, T26N, R5W

12. COUNTY OR PARISH

Rio Arriba

13. STATE

New Mexico

APPLICATION FOR PERMIT TO DRILL, DEEPEN, OR PLUG BACK

1a. TYPE OF WORK

DRILL

DEEPEN

PLUG BACK

b. TYPE OF WELL

OIL WELL

GAS WELL

OTHER

SINGLE ZONE

MULTIPLE ZONE

2. NAME OF OPERATOR

Tenneco Oil Company

3. ADDRESS OF OPERATOR

P.O. Box 3249, Englewood, CO 80155

4. LOCATION OF WELL (Report location clearly and in accordance with any State requirements.)

At surface

870' FWL, 1850' FNL

At proposed prod. zone

same as above

RECEIVED
DEC 23 1981

14. DISTANCE IN MILES AND DIRECTION FROM NEAREST TOWN OR POST OFFICE*

13.5 miles SE of Gould Pass, New Mexico

15. DISTANCE FROM PROPOSED*

LOCATION TO NEAREST PROPERTY OR LEASE LINE, FT. (Also to nearest drlg. unit line, if any)

870

16. NO. OF ACRES IN LEASE

2560

17. NO. OF ACRES ASSIGNED TO THIS WELL

W320

18. DISTANCE FROM PROPOSED LOCATION*

TO NEAREST WELL, DRILLING, COMPLETED, OR APPLIED FOR, ON THIS LEASE, FT.

19. PROPOSED DEPTH

7500'

20. ROTARY OR CABLE TOOLS

Rotary

21. ELEVATIONS (Show whether DF, RT, GR, etc.)

6578' ground

22. APPROX. DATE WORK WILL START*

ASAP

23. PROPOSED CASING AND CEMENTING PROGRAM

SIZE OF HOLE	SIZE OF CASING	WEIGHT PER FOOT	SETTING DEPTH	QUANTITY OF CEMENT
12-1/4"	9-5/8"	36#	+ 300'	Circ. cement to surface
8-3/4"/7-7/8"	4-1/2"	10.5#, 11.6#	+ 7500'	Circ. cement to liner top

See attached Drilling Procedure.
Gas is dedicated.

RECEIVED
FEB 19 1982
OIL CON. COM.
DIST. 3

IN ABOVE SPACE DESCRIBE PROPOSED PROGRAM: If proposal is to deepen or plug back, give data on present productive zone and proposed new productive zone. If proposal is to drill or deepen directionally, give pertinent data on subsurface locations and measured and true vertical depths. Give blowout preventer program, if any.

24.

SIGNED

Donell Harrison

TITLE

Production Analyst

DATE

12/17/81

(This space for Federal or State office use)

PERMIT NO.

APPROVAL DATE

APPROVED BY

TITLE

CONDITIONS OF APPROVAL, IF ANY:

APPROVED
AS AMENDED
DATE
FEB 17 1982
Sean Elliott
For JAMES F. SIMS
DISTRICT ENGINEER

NMOCC

OIL CONSERVATION DIVISION

P. O. BOX 2088

SANTA FE, NEW MEXICO 87501

Form C-107
Revised 10-1-78

STATE OF NEW MEXICO
ENERGY AND MINERALS DEPARTMENT

All distances must be from the outer boundaries of the Section.

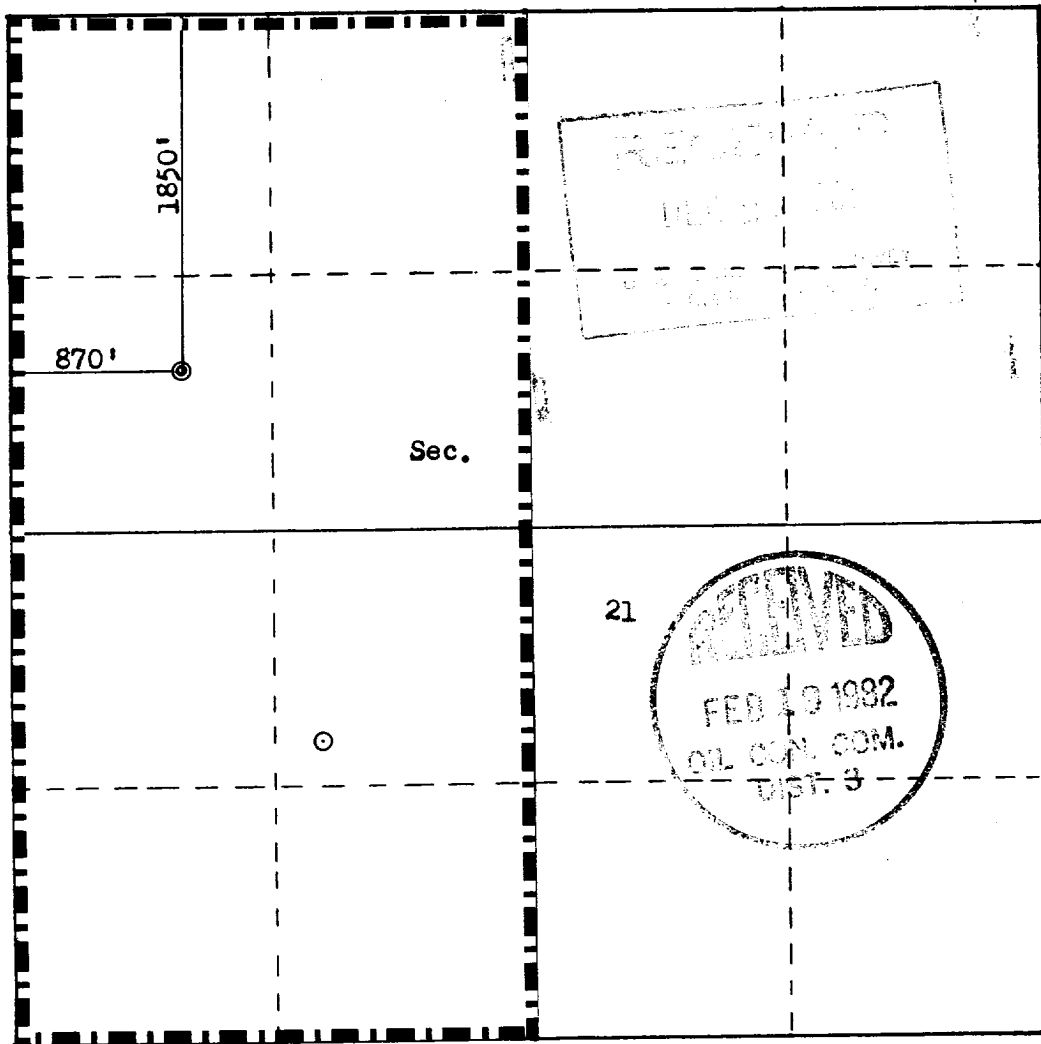
Operator TENNECO OIL COMPANY			Lease JICARILLA "B"		Well No. 5E
Unit Letter E	Section 21	Township 26N	Range 5W	County Rio Arriba	
Actual Footage Location of Well: 1850 feet from the North line and 870 feet from the West line					
Ground Level Elev. 6578	Producing Formation Dakota		Pool Basin Dakota	Dedicated Acreage: W 320 Acres	

1. Outline the acreage dedicated to the subject well by colored pencil or hachure marks on the plat below.
2. If more than one lease is dedicated to the well, outline each and identify the ownership thereof (both as to working interest and royalty).
3. If more than one lease of different ownership is dedicated to the well, have the interests of all owners been consolidated by communitization, unitization, force-pooling, etc?

Yes No If answer is "yes," type of consolidation _____

If answer is "no," list the owners and tract descriptions which have actually been consolidated. (Use reverse side of this form if necessary.) _____

No allowable will be assigned to the well until all interests have been consolidated (by communitization, unitization, forced-pooling, or otherwise) or until a non-standard unit, eliminating such interests, has been approved by the Commission.



Scale: 1"=1000'

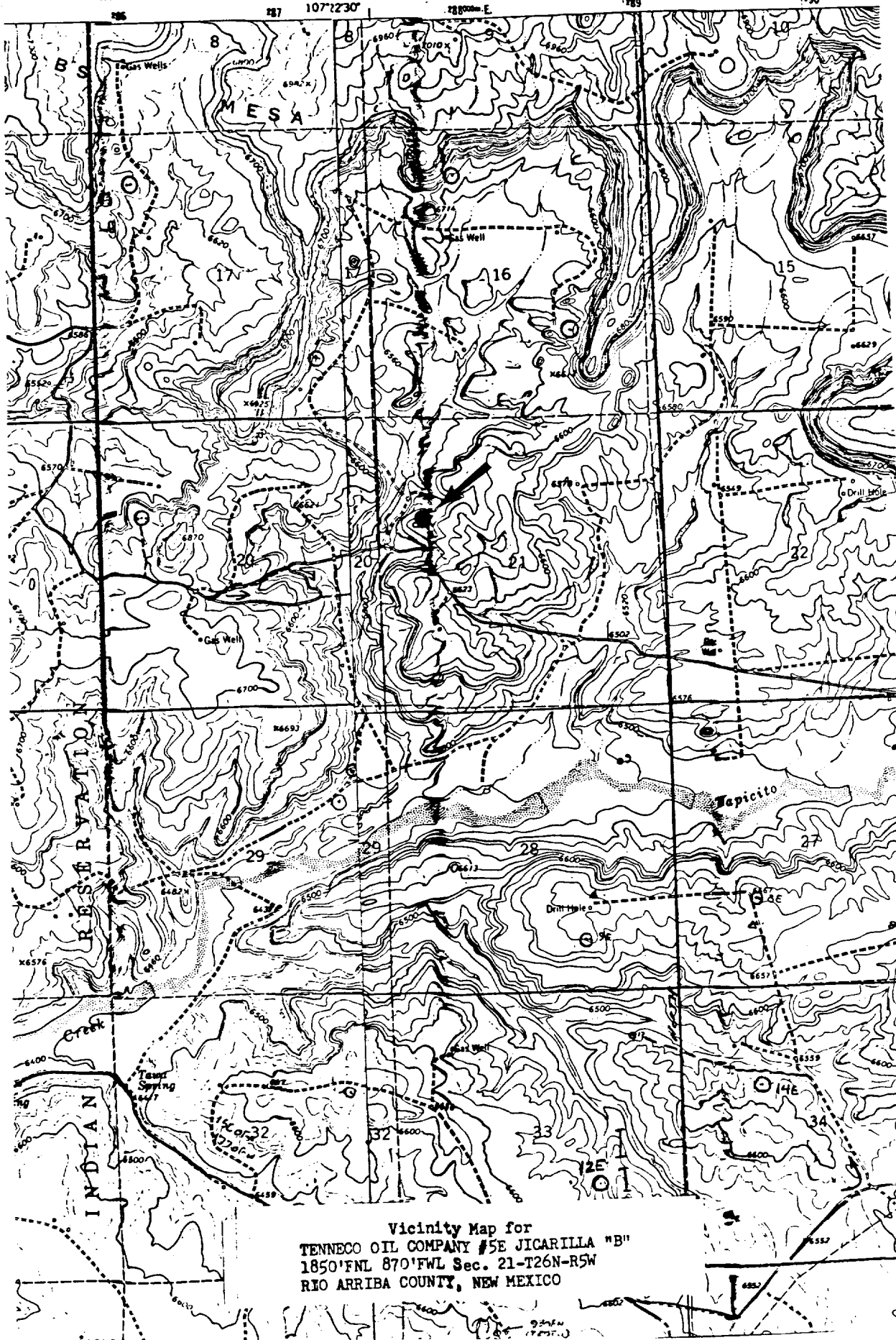
CERTIFICATION

I hereby certify that the information contained herein is true and complete to the best of my knowledge and belief.

Name <i>Don H. Harrison</i>
Position Production Analyst
Company Tenneco Oil Company
Date 10-13-81

I hereby certify that the well location shown on this plat was plotted from field notes of actual surveys made by me or under my supervision, and that the same is true and correct to the best of my knowledge and belief.

Date Surveyed October 15, 1981
Registered Professional Engineer and Land Surveyor <i>Fred B. Kerr, Jr.</i>
Certificate No. 3950



Vicinity Map for
 TENNECO OIL COMPANY #5E JICARILLA "B"
 1850'FNL 870'FWL Sec. 21-T26N-R5W
 RIO ARRIBA COUNTY, NEW MEXICO