



STATE OF NEW MEXICO
ENERGY AND MINERALS DEPARTMENT

OIL CONSERVATION DIVISION
AZTEC DISTRICT OFFICE

will file

1000 RIO BRAZOS ROAD
AZTEC, NEW MEXICO 87410
(505) 334-6178

OIL CONSERVATION DIVISION
BOX 2088
SANTA FE, NEW MEXICO 87501

DATE Dec. 18, 1987

RE: Proposed MC _____
Proposed DHC α _____
Proposed NSL _____
Proposed SWD _____
Proposed WFX _____
Proposed PMX _____

Gentlemen:

I have examined the application dated Dec. 8, 1987
for the Carbunk Oil Co. State's Com #233E 1K-16-26N-6W
Operator Lease and Well No. Unit, S-T-R

and my recommendations are as follows:

Approve

Yours truly,

Frank J. Day

CAULKINS OIL COMPANY

P. O. BOX 780
FARMINGTON, NEW MEXICO 87401

December 3, 1982

Division Director
New Mexico Oil Conservation Division
P.O. Box 2088
Santa Fe, New Mexico

Re: Downhole Commingle
Otero Chacra-Blanco Mesa Verde
State B Comm Well No. 233-E
1715 F/W 1740 F/S Section 16 26N 6W
Rio Arriba County, New Mexico

Gentlemen:

As per instructions order No. R-6882 Rule#303-C, we hereby request administrative approval for downhole commingling of Chacra and Mesa Verde Zones in above described well.

In support of this request we submit the following:
Rule 303-C "B"

Zones are not econonically producable to complete as singles, no cross flow should occur unless well is shut in for an extended period, no condensate production expected from Chacra, the ownership of this well common, including working interest and royalty interest, bottomhole pressure as measured by BHP gauge 1003# for Chacra and 1138# for Mesa Verde, calculated to common depth of 3907'.

A plat showing acreage dedication attached.

A copy of BHP tests attached.

Well completion history:

TD 7520'

5 1/2" 15.5 and 17# cemented Td to surface in three stages.

6-26-27-82 Dakota zone perforated 7266' to 7424', then sand water fraced with 2080 bbls. water and 131,570# 20-40 sand.

Set BP at 5441', then perforated Mesa Verde zone 5164' to 5376' with 11 holes. Fractured Mesa Verde Perforations with 100,000# 20-40 sand and 1584 bbls. water. Set BP at 3976', then perforated Chacra zone with 11 holes 3860' to 3953'. Fractured Chacra perforations with 60,000# 20-40 sand and 1622 bbls. water.

6-28-82 Pulled BP's at 3976' and 5164'.

6-30-82 Ran 2 3/8" EUE Tubing to 7400', swabbed well in to clean up.



6-30-82 to 8-25-82 Flowed well intermittently with all three zones open, to clean up frac sand and frac water.

8-25-82 Ran Baker Model "D" Production Packer and set at 5405'. Production Packer had expendable Plug installed to shut off Dakota Zone.

Ran 2 1/16" OD 3.25# IJ Tubing with Baker Model "R" Double Grip Packer set at 5350' for Mesa Verde test.

Ran 2 1/16" 3.25# IJ Tubing to 3900' for Chacra test.

8-26-82 Bottomhole pressure tests run on both zones. Results attached.
Open flow tests run both zones:

Mesa Verde rate of flow, after 3 hours, thru 3/4" choke 849 MCFPD

Chacra rate of flow, after 3 hours, thru 3/4" choke 1062 MCFPD

From results of above test we recommend production split to be:

Chacra zone 56% all gas.

Mesa Verde 44% of all gas and 100% of all oil.

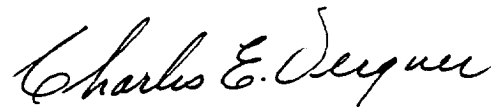
After tests completed Model "R" Packer salvaged and completion tubing run as follows:

2 1/16" IJ 3.25# tubing to 7400' with seals set in Packer at 5405' for Dakota production.

1 1/4" IJ 2.3# tubing to 5320' for commingled Chacra-Mesa Verde production.

Caulkins Oil Company is operator of all offset acreage.

Yours very truly,



Charles E. Verquer
Superintendent

Copy: New Mexico Oil Conservation Division, Aztec (1)
Denver Office (1)
File (1)





TEFTELLER, INC.

reservoir engineering data

MIDLAND, TEXAS / FARMINGTON, NEW MEXICO
GRAND JUNCTION, COLORADO

**P. O. Box 5247
Midland, Texas 79704
(915) 682-5574**

August 31, 1982

Caulkins Oil Company
Box 340
Bloomfield, New Mexico 87413

Attention: Mr. Charles Verquer

Subject: Bottom Hole Pressure Measurements
State "B" Comm. No. 233-E
Basin Dakota Field
Chacra and Mesa Verde Formations
Rio Arriba County, New Mexico
Our File No. 2-14239-P

Gentlemen:

Attached hereto are the results of bottom hole pressure measurements which were conducted on the above captioned well August 26, 1982.

The data presented are in tabular and graphical form.

It has been our pleasure to have conducted this service for you. If we may be of further assistance, please call us at any time.

Respectfully submitted,

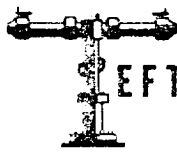
TEFTELLER, INC.

G. W. Taylor
Operations Manager

GWT/lw



Serving the Permian Basin & Rocky Mountain Area



EFTELLER, INC.

reservoir engineering data
MIDLAND, TEXAS

Page 1 of 2
File 2-14239-P

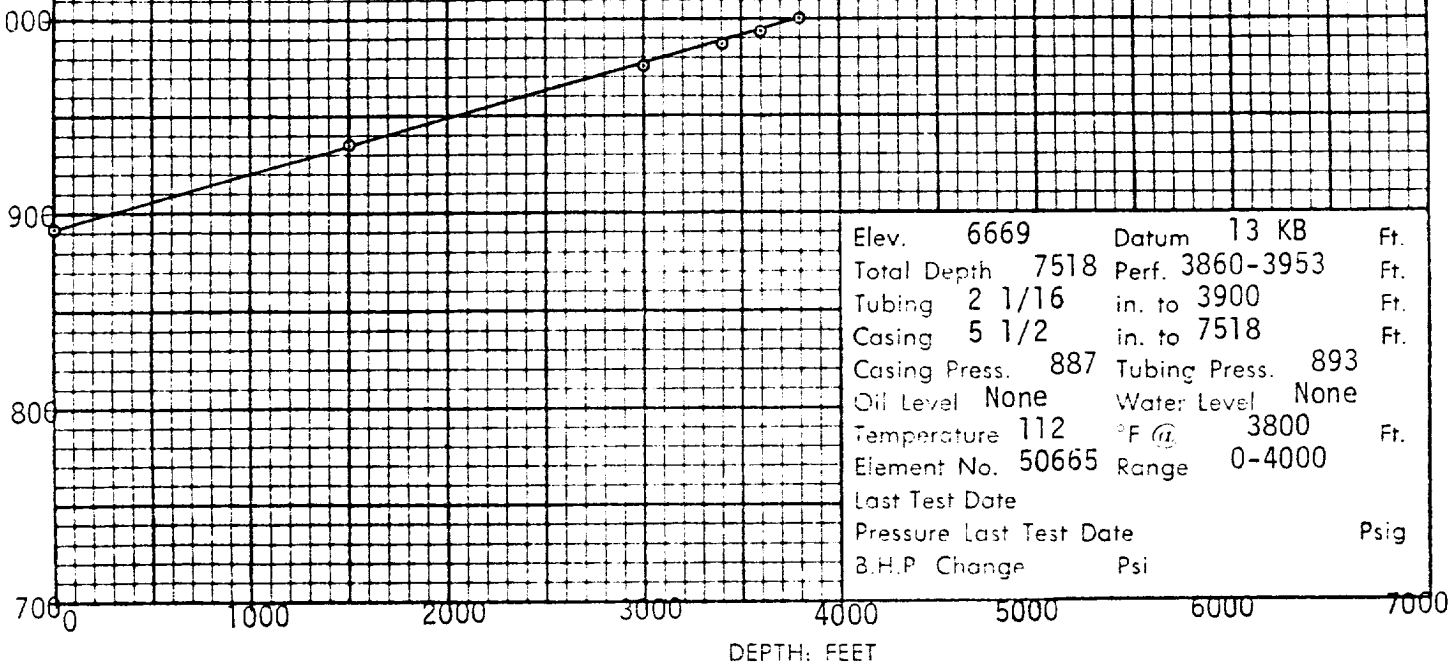
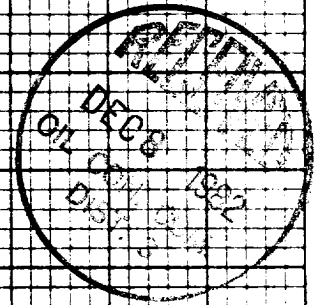
Company CAULKINS OIL COMPANY Lease STATE "B" COM. Well No. 233-E
Field BASIN DAKOTA County RIO ARRIBA State NEW MEXICO
Formation CHACRA Test Date AUGUST 26, 1982

Status of Well Shut-in 19.25 hours

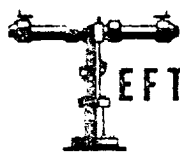
DEPTH Feet	PRESSURE Psig	GRADIENT Psi/Ft.
0	892	
1500	935	0.029
3000	977	0.028
3400	988	0.028
3600	994	0.030
3800	1000	0.030
3907*	1003	0.030

*Mid-Perf

Datum Pressure Psig



Elev. 6669 Datum 13 KB Ft.
Total Depth 7518 Perf. 3860-3953 Ft.
Tubing 2 1/16 in. to 3900 Ft.
Casing 5 1/2 in. to 7518 Ft.
Casing Press. 887 Tubing Press. 893
Oil Level None Water Level None
Temperature 112 °F @ 3800 Ft.
Element No. 50665 Range 0-4000
Last Test Date
Pressure Last Test Date Psig
B.H.P. Change Psi



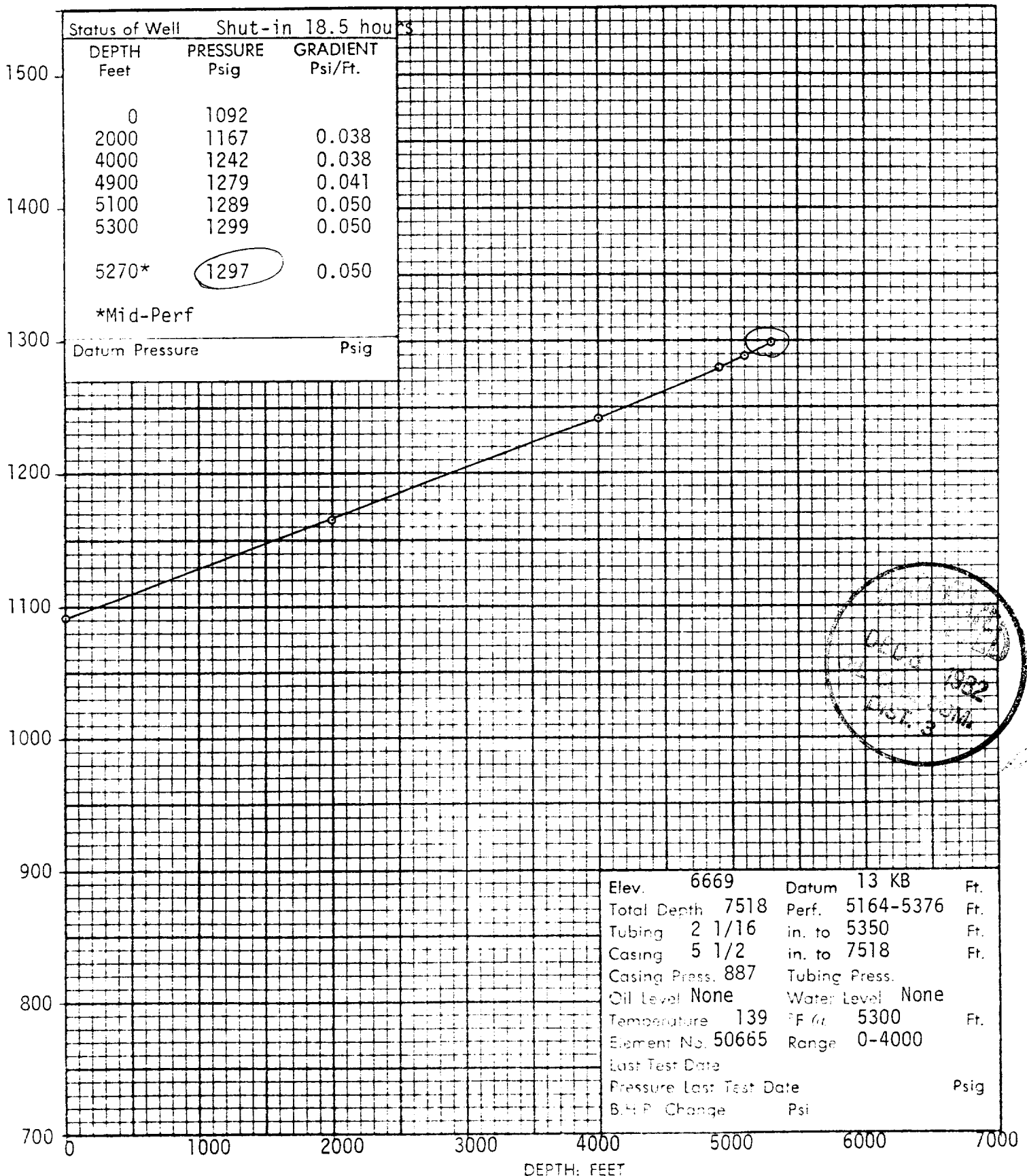
EFTELLER, INC.

reservoir engineering data

MIDLAND, TEXAS

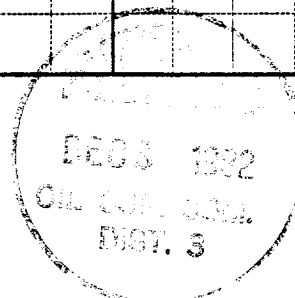
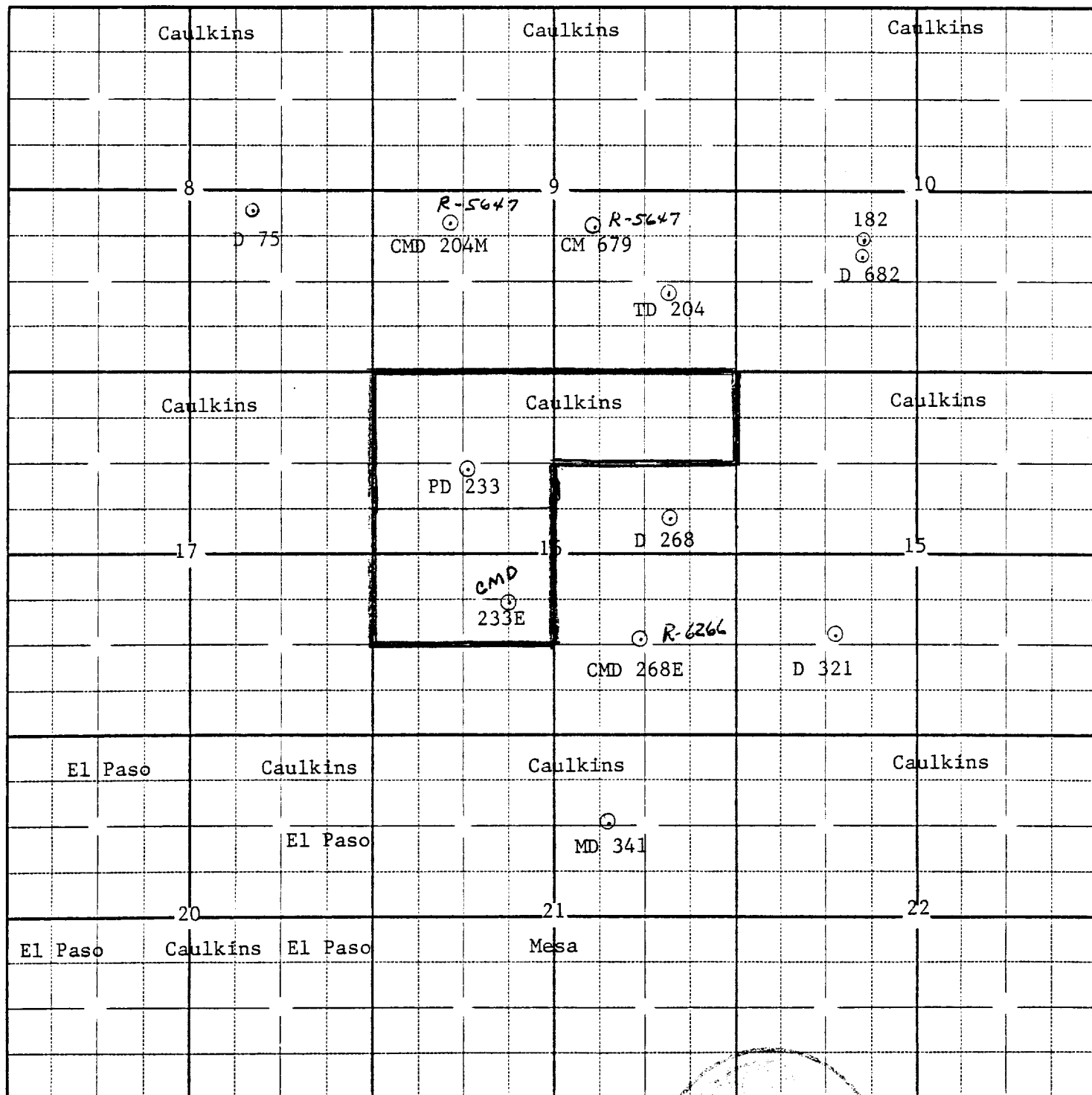
Page 2 of 2
File 2-14239-P

Company CAULKINS OIL COMPANY Lease STATE "B" COM. Well No. 233-E
Field BASIN DAKOTA County RIO ARriba State NEW MEXICO
Formation MESA VERDE Test Date AUGUST 26, 1982



Township 26 North, Range 6 West, County Rio Arriba, State New Mexico

Caulkins Oil Company
State "B" Comm 233 E
SW 1/4 Section 16 26 North 6 West



CAULKINS OIL COMPANY

P. O. BOX 780
FARMINGTON, NEW MEXICO 87401

October 4, 1982

Mr. Frank Chavez
Oil Conservation Division
1000 Rio Brazos Road
Aztec, New Mexico 87410

Re: Downhole Commingled Production
Caulkins Oil Company
State "B" Comm 233E
Unit K Sec.16 26N 6W
Rio Arriba County, New Mexico

Dear Mr. Chavez,

Following are results of tests taken on Chacra and Mesa Verde Zones before
Commingling well.

8-25-82 Baker Model "D" Production Packer with expendable Plug was set
in casing at 5405' to shut off Dakota Zone.
Ran Baker Model "R" Double Grip Packer on 2 1/16" 3.25# IJ Tubing to 5350'
with Packer set at 4005' for Mesa Verde Test.
Ran 2 1/16" 3.25# IJ Tubing to 3900' for Chacra Test.

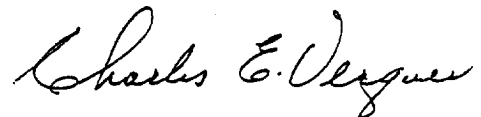
8-26-82 Bottom hole pressure tests run. Mesa Verde BHP 1297#. Chacra
BHP 1003#. Copy of Test attached.
Rate of flow thru 3/4" choke after 3 hrs.
Mesa Verde Zone 849 MCFPD
Chacra Zone 1062 MCFPD

From results of tests we recommend following breakdown for all future
production from commingled Chacra Mesa Verde Zones.

Chacra Zone
Mesa Verde Zone

56% of all gas
44% of all gas and 100% of all Oil

Yours very truly,



Charles Verquer, Superintendent
Caulkins Oil Company