

UNITED STATES  
DEPARTMENT OF THE INTERIOR  
GEOLOGICAL SURVEY

## APPLICATION FOR PERMIT TO DRILL, DEEPEN, OR PLUG BACK

## 1a. TYPE OF WORK

DRILL ☒DEEPEN ☐PLUG BACK ☐

## b. TYPE OF WELL

OIL  
WELL ☐GAS  
WELL ☒OTHER ☐SINGLE  
ZONE ☐MULTIPLE  
ZONE ☒

## 2. NAME OF OPERATOR

Supron Energy Corporation

## 3. ADDRESS OF OPERATOR

P.O. Box 808, Farmington, NM 87401

## 4. LOCATION OF WELL (Report location clearly and in accordance with applicable requirements)

At surface 1650 ft/N; 790 ft/E line

At proposed prod. zone

Same as above

## 14. DISTANCE IN MILES AND DIRECTION FROM NEAREST TOWN OR POST OFFICE, GEOLOGICAL SURVEY

30 miles northwest of Ojito, New Mexico

FARMINGTON, N. M.

## 15. DISTANCE FROM PROPOSED\*

LOCATION TO NEAREST  
PROPERTY OR LEASE LINE, FT.  
(Also to nearest drig. unit line, if any)

3630

## 18. DISTANCE FROM PROPOSED LOCATION\*

TO NEAREST WELL, DRILLING, COMPLETED,  
OR APPLIED FOR, ON THIS LEASE, FT.

615

## 16. NO. OF ACRES IN LEASE

2560

## 19. PROPOSED DEPTH

7580

17. NO. OF ACRES ASSIGNED  
TO THIS WELL

320 (East Half)

## 20. ROTARY OR CABLE TOOLS

Rotary

## 21. ELEVATIONS (Show whether DF, RT, GR, etc.)

6654 Gr.

## 22. APPROX. DATE WORK WILL START\*

July 1, 1982

## 23. PROPOSED CASING AND CEMENTING PROGRAM

SIZE OF HOLE	SIZE OF CASING	WEIGHT PER FOOT	SETTING DEPTH	QUANTITY OF CEMENT
12 1/4"	8 5/8"	24.00	250	200 sx (Circulate to surface)
7 7/8"	5 1/2"	15.50	7580	1100 sx.

We propose to drill a 12 1/4" surface hole with natural mud to a total depth of 250 ft. and run 8 5/8", 24.00# and cement with enough cement to circulate to the surface (about 200 sacks). We will drill a 7 7/8" hole with mud to a total depth of 7580 ft. We will run 5 1/2", 15.50#, K-55 casing to total depth with stage collars at about 5950 ft. and 3110 ft. The first stage will be cemented with 250 sacks of 50-50 Pozmix. The second stage will be cemented with 300 sacks of 50-50 Pozmix and 150 sacks of Class "B". The third stage will be cemented with 250 sacks of 65-35-6 and 150 sacks of Class "B". Drill out stage collars and pressure-test casing. Perforate and frac the Dakota zone. Set bridge plug between the Dakota and Mesaverde zones. Perforate and frac the Mesaverde zone. Remove the bridge plug. Clean up both zones. Run 2 1/16" tubing to the Dakota zone with a packer to separate the Dakota from the Mesaverde. Run an additional string of 2 1/16" tubing to the Mesaverde zone. Run packer-leakage test. Hookup both zones to a gas gathering system. The gas from both zones has been previously dedicated to a gas transporter.

IN ABOVE SPACE DESCRIBE PROPOSED PROGRAM: If proposal is to deepen or plug back, give data on present productive zone and proposed new productive zone. If proposal is to drill or deepen directionally, give pertinent data on subsurface locations and measured and true vertical depths. Give blowout preventer program, if any.

24.

SIGNED

Rudy P. Motto

TITLE Area Superintendent

DATE April 27, 1982

(This space for Federal or State office use)

PERMIT NO.

APPROVAL DATE

APPROVED BY

TITLE

CONDITIONS OF APPROVAL, IF ANY:

APPROVED  
AS AMENDED

MAY 6 1982

JAMES F. SIMS  
DISTRICT ENGINEER

NMOCC



Form C-102  
Supersedes C-128  
Effective 1-1-65

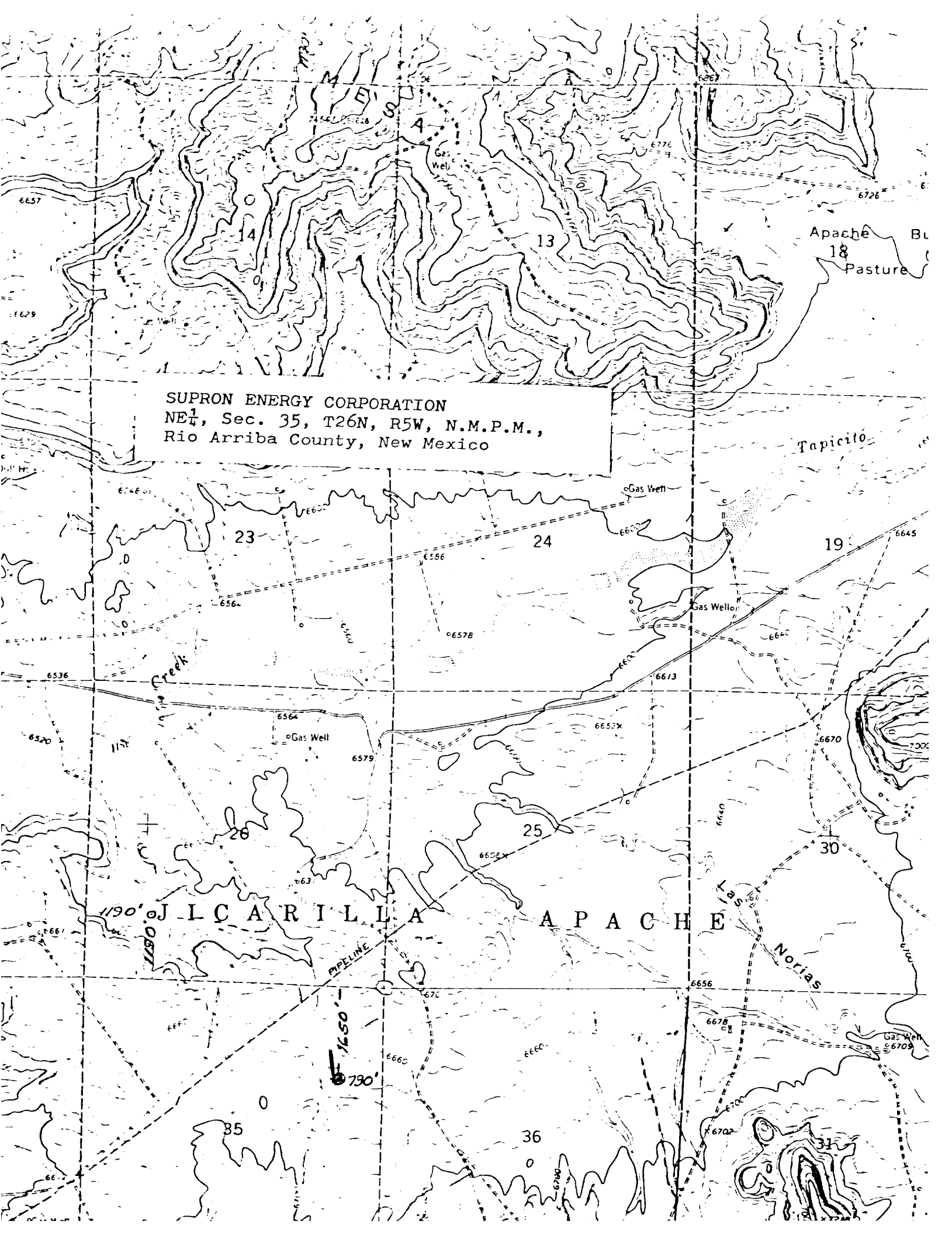
Operator <b>SUPRON ENERGY CORPORATION</b>		Lease <b>JICARILLA J</b>		Well No. <b>14-E</b>
Unit Letter <b>H</b>	Section <b>35</b>	Township <b>26 NORTH</b>	Range <b>5 WEST</b>	County <b>RIO ARRIBA</b>
Actual Footage Location of Well:				
<b>1650</b> feet from the <b>NORTH</b> line and		<b>790</b> feet from the <b>EAST</b> line		
Ground Level Elev. <b>6654</b>	Producing Formation <b>Dakota Mesaverde</b>	Pool <b>Basin Blanco</b>	Dedicated Acreage: <b>320.00</b> Acres	

- No allowable will be assigned to the well until all interests have been consolidated (by communitization, unitization, forced-pooling, or otherwise) or until a non-standard unit, eliminating such interests, has been approved by the Commission.



0	330	660	90	1320	1860	1860	2310	2640	2000	1500	1000	600	0
---	-----	-----	----	------	------	------	------	------	------	------	------	-----	---





SUPRON ENERGY CORPORATION  
NE $\frac{1}{4}$ , Sec. 35, T26N, R5W, N.M.P.M.,  
Rio Arriba County, New Mexico

Apache Bu  
18  
Pasture

Tapicito

JILCARILLA APACHE

Las Norias

PIPELINE

1190'  
1080'

1650'  
790'

Gas Well  
6709

Gas Well  
6678

Gas Well  
6656

Gas Well  
6640

Gas Well  
6613

Gas Well  
6602

Gas Well  
6578

Gas Well  
6564

Gas Well  
6536

Gas Well  
6520

Gas Well  
6504

Gas Well  
6488

Gas Well  
6472

Gas Well  
6456

Gas Well  
6440

Gas Well  
6424

Gas Well  
6408

Gas Well  
6392

Gas Well  
6376

Gas Well  
6360

Gas Well  
6344

Gas Well  
6328

Gas Well  
6312

Gas Well  
6296

Gas Well  
6280

Gas Well  
6264

Gas Well  
6248

Gas Well  
6232

Gas Well  
6216

Gas Well  
6200

Gas Well  
6184

Gas Well  
6168

Gas Well  
6152

Gas Well  
6136

Gas Well  
6120

Gas Well  
6104

Gas Well  
6088

Gas Well  
6072

Gas Well  
6056

Gas Well  
6040

Gas Well  
6024

Gas Well  
6008

Gas Well  
5992

