

UNITED STATES
DEPARTMENT OF THE INTERIOR
BUREAU OF LAND MANAGEMENT

RECEIVED
BLM

FORM APPROVED
Budget Bureau No. 1004-0135
Expires March 31, 1993

SUNDRY NOTICES AND REPORTS ON WELLS

Do not use this form for proposals to drill or to deepen or reentry to a different reservoir.
Use "APPLICATION FOR PERMIT—" for such proposals.

SEP - 8 PM 2:20
070 FRUITLAND COAL, NM

SUBMIT IN TRIPLICATE

1. Type of Well

☐ Oil Well ☒ Gas Well ☐ Other

2. Name of Operator

CONOCO INC.

3. Address and Telephone No.

10 DESTA DR. STE. 100W, MIDLAND, TX. 79705-4500 (915) 686-5424

4. Location of Well (Footage Sec., T. R. M. or Survey Description)

Section 19, T-26-N, R-6-W, B
950' FNL & 1765' FEL

5. Lease Designation and Serial No.

SF 079295

6. If Indian, Allottee or Tribe Name

7. If Unit or CA, Agreement Designation

8. Well Name and No.

Reames COM #2

9. API Well No.

30-039-23172

10. Field and Pool, or Exploratory Area

Basin Fruitland Coal

11. County or Parish, State

Rio Arriba, NM

12. CHECK APPROPRIATE BOX(s) TO INDICATE NATURE OF NOTICE, REPORT, OR OTHER DATA

TYPE OF SUBMISSION

- ☒ Notice of Intent
☐ Subsequent Repon
☐ Final Abandonment Notice

TYPE OF ACTION

- ☐ Abandonment
☒ Recompletion
☐ Plugging Back
☐ Casing Repair
☐ Altering Casing
☐ Other _____
- ☐ Change of Plans
☐ New Construction
☐ Non-Routine Fracuring
☐ Water Shut-Off
☐ Conversion to Injection
☐ Dispose Water

(Note: Repon result of multiple completion on Well Completion or Recompletion Report and Log form.)

13. Describe Proposed or Completed Operations (Clearly state all pertinent details, and give pertinent dates, including estimated date of starting any proposed work. If well is directionally drilled, give subsurface locations and measured and true vertical depths for all markers and zones pertinent to this work.)*

It has been proposed to recomplete this well in the Fruitland Coal and then dual produce (C 107 Dual Application approved August 13, 1998) with the MV & DK Commingled (DHC Order # 1621) The procedure to recomplete is attached.

RECEIVED
SEP 16 1998
OIL CON. DIV.
DIST. 3

14. I hereby certify that the foregoing is true and correct:

Signed

Kay Maddox

Title

Kay Maddox

Regulatory Agent

Date

September, 4, 1998

(This space for Federal or State office use)

Approved by

/s/ Duane W. Spencer

Title

Date

SEP 15 1998

Conditions of approval if any

BLM(6), NMOCD(1), SHEAR, PONCA, COST ASST, FILE ROOM

Title 18 U.S.C. Section 1001, makes it a crime for any person knowingly and willfully to make to any department or agency of the United States any false, fictitious or fraudulent statements or representations as to any matter within its jurisdiction.

*See Instruction on Reverse Side

NMOCD

District I
PO Box 1980, Hobbs, NM 88241-1980

District II
PO Drawer DD, Artesia, NM 88211-0719

District III
1000 Rio Brazos Rd. Aztec, NM 87410

District IV
PO Box 2088, Santa Fe, NM 87504-2088

State of New Mexico
Energy, Minerals & Natural Resources Department

OIL CONSERVATION DIVISION

PO Box 2088
Santa Fe, NM 87504-2088

de

Form C-102

Revised February 21, 1994

Instructions on back

Submit to Appropriate District Office

State Lease - 4 Copies

Fee Lease - 3 Copies

070 PACIFICATION, NM

☐ AMENDED REPORT

WELL LOCATION AND ACREAGE DEDICATION PLAT

API Number 30-039-23172	2 Pool Code 71629	3 Pool Name Basin Fruitland Coal
4 Property Code 016606	5 Property Name Reames COM	6 Well Number #2
7 OGRID No. 005073	8 Operator Name Conoco Inc., 10 Desta Drive, Ste. 100W, Midland, TX 79705-4500	9 Elevation 6115'

10 Surface Location

UL or lot no. B	Section 19	Township 26N	Range 6W	Lot Idn	Feet from the 950	North/South line North	Feet from the 1765	East/West line East	County Rio Arriba
--------------------	---------------	-----------------	-------------	---------	----------------------	---------------------------	-----------------------	------------------------	----------------------

11 Bottom Hole Location If Different From Surface

UL or lot no.	Section	Township	Range	Lot Idn	Feet from the	North/South line	Feet from the	East/West line	County
---------------	---------	----------	-------	---------	---------------	------------------	---------------	----------------	--------

12 Dedicated Acres 320	13 Unit or Infill	14 Consolidation Code	15 Order No.
---------------------------	-------------------	-----------------------	--------------

NO ALLOWABLE WILL BE ASSIGNED TO THIS COMPLETION UNTIL ALL INTERESTS HAVE BEEN CONSOLIDATED
OR A NON-STANDARD UNIT HAS BEEN APPROVED BY THE DIVISION

16	950'	1765'
RECEIVED SEP 16 1998 OIL CON. DIV.		

17 OPERATOR CERTIFICATION

I hereby certify that the information contained herein is true and complete to the best of my knowledge and belief.

Kay Maddox
Signature

Kay Maddox

Printed Name

Regulatory Agent

Title

September 4, 1998

Date

18 SURVEYOR CERTIFICATION

I hereby certify that the well location shown on this plat was plotted from field notes of actual surveys made by me or under my supervision, and that the same is true and correct to the best of my belief.

Date of Survey

Signature and Seal of Professional Surveyor

Certificate Number

Recommended Procedure and Notes

Notes:

1. All depths in this procedure are referenced from KB unless noted otherwise.
2. Please give service companies 24 hours advance notice prior to performing work on the well.
3. Wellhead is assumed to be a 2000 psig wellhead. Check configuration prior to beginning work.

Safety Precautions:

1. Smoking will not be allowed within 100' of the wellhead.
2. All on-site personnel are to wear safety glasses with side-shields, steel-toed boots, and plastic hardhats at all times.
3. Eye protection and hand protection should be worn when handling acid/chemicals. Eye protection should be worn when there is the potential for acid/chemicals to blow or splash into the eyes.
4. MSDS's for all chemicals used in this procedure must be available on location for inspection and use. An inventory of all chemicals used should be submitted to SHEAR in the Midland office at the completion of the job.
5. The service company should bring communication devices for each individual operating pumps/valves and for the field engineer.
6. Fresh water will be on location in case of accidental discharge or an emergency (water to be provided by the treating company).
7. Eye wash bottles should be available and ready for use. All on-site personnel should be aware of the location of these bottles.
8. Only personnel needed for the job will be allowed on location.
9. Acidizing company should furnish fresh water rinse station for use in case of emergency.
10. All lines that will be transporting energized fluids will be securely staked or chained. (See Conoco/BJ Services Treating Lines Safety Standards.)
11. Hold tailgate safety meetings daily prior to any work being performed. Determine safe location where all personnel will meet in the event of an emergency.

Procedure:

1. Prepare location for work. Test deadmen anchors.

2. MIRU workover rig. Kill well w/1% KCl water (use minimal amount of water but ensure both tubing strings are dead).
3. ND wellhead and NU BOP.
4. POOH w/2 $\frac{3}{8}$ " 4.7# Hydril tubing (shortstring) standing back approximately 2800' and lay remainder down on slip.
5. PU on 2 $\frac{3}{8}$ " 4.7# EUE tubing (longstring) and sting out of Baker Model "D" packer (at $\pm 5340'$). POOH w/tubing ($\pm 7300'$).
6. RIH w/packer milling tools (bulldog bailer and packer milling shoe) and packer plucker on workstring. Mill over Baker Model "D" packer at $\pm 5340'$ using 1% KCl water down the tubing. POOH w/packer remains.
7. MIRU wireline unit. RIH w/CIBP suitable for 7" 23# casing and set at $\pm 2920'$ (bottom of cement is at $\pm 2943'$).
8. Load hole with ± 115 bbls 1% KCl water.
9. RIH with GR/CCL logging tools and log from $\pm 2920'$ to $\pm 2000'$.
10. RIH w/4" HSC perforating guns loaded w/22 gram charges, 4 spf, and 90° phasing. Perforate the Fruitland Coal zone as follows:

2,728' - 2,732' @ 4 spf
2,734' - 2,738' @ 4 spf
2,746' - 2,749' @ 4 spf
2,760' - 2,764' @ 4 spf
2,782' - 2,785' @ 4 spf
2,789' - 2,797' @ 4 spf
2,800' - 2,802' @ 4 spf
2,806' - 2,808' @ 4 spf
2,810' - 2,816' @ 4 spf
2,848' - 2,851' @ 4 spf
2,863' - 2,882' @ 4 spf
11. MIRU acidizing company. Pressure test lines w/water to 4500 psig.
12. RIH w/tubing string and PIP tool (pinpoint injection packer) or equivalent w/5' spacing to $\pm 2600'$. Drop flow control valve and load tubing w/ ± 10 bbls of 15% HCL. Set PIP tool in blank section of casing and test tool.
13. Set PIP tool at $\pm 2877'$ (set tool to ensure bottom 5' of perfs are broken down). Inject 50 gals 15% HCL at ± 1.0 bpm and 4000 psig maximum surface treating pressure. Unseat tool and move uphole 5'. Repeat process until all Fruitland Coal perforations have been treated. (Should take 16 sets for a total of 800 gallons of acid)

Note: Flush acid out of surface lines and tubing above wellhead prior to breaking any connections during acid treatment.

14. PU PIP tool and set at $\pm 2650'$. Fish flow control valve and dart. Displace acid w/10 bbls 1% KCl water.
15. Release packer and flush backside w/10 bbls KCl water. POOH w/tubing and PIP tool.
16. RIH w/3½" frac string and treating packer suitable for 7" 23# casing. Set packer at $\pm 2630'$.
17. Fracture stimulate the Fruitland Coal as per B J Services recommendations.
18. Release treating packer and POOH w/frac string. PU 2¾" tubing and 6¼" bit. Drill up CIBP @ $\pm 2720'$ and clean out hole to top of liner ($\pm 5376'$). POOH w/tubing and bit.
19. RIH w/tubing, 3⅞" bit and casing scraper suitable for 4½" 11.6# casing. Clean out well to PBTD ($\pm 7370'$). POOH w/bit and scraper.
20. MIRU wireline company. RIH w/Baker Model "D" production packer suitable for 7" 23# casing on wireline and set packer at $\pm 4500'$ (TOC at $\pm 4300'$). POOH w/setting tool.
21. RIH w/2¾" 4.7# EUE tubing and seal assembly for Baker Model "D" production packer. Land tubing in 4½" casing near mid-perf in the Dakota zone ($\pm 7258'$). Latch into packer and space out tubing so that the longstring is left in tension (will keep tubing straight to allow for ease of plunger lift operations).

Note: You will need $\pm 2758'$ of tubing below seal assembly.

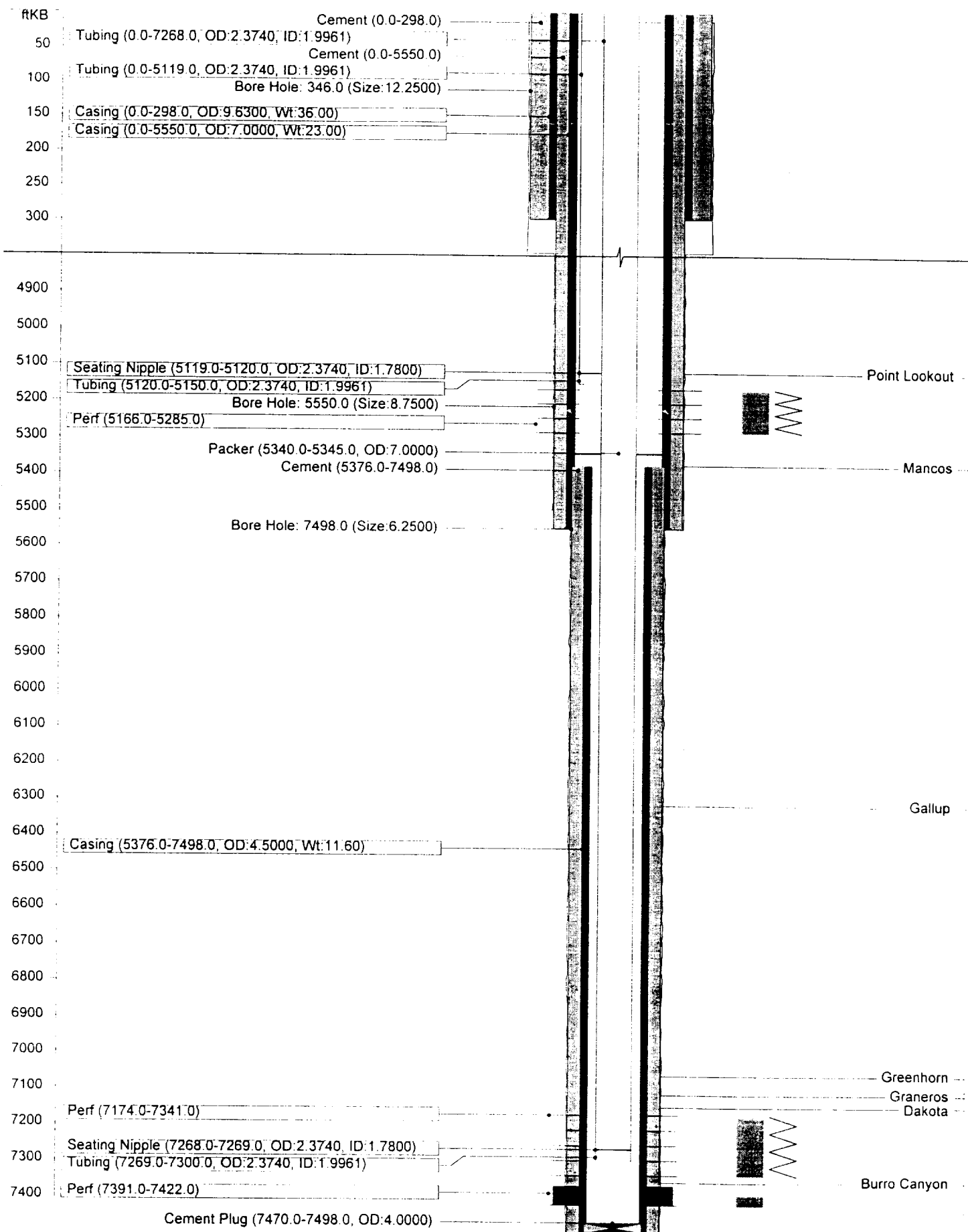
22. RIH w/2¾" 4.7# Hydril tubing and set near mid-perf in the Fruitland Coal zone ($\pm 2805'$)
23. Swab or jet well to clean up as necessary. Put well on production and monitor flowrates and pressures. Flow well long enough to ensure well is cleaned up and not making sand.
24. Report results to Midland office.

Hazardous Chemical Inventory:

Hazardous chemical reporting is required under SARA Title III. A Blank form "WORKOVER/COMPLETION INVENTORY (HAZARDOUS CHEMICAL INVENTORY)" is attached to this procedure. The form should be filled out by the service company representative delivering chemicals to the location. Also, MSDS's and amount of chemical is to be provided. The Conoco representative on location is to forward the completed form and MSDS's to the Coordinator-Environmental Affairs in the Midland Division Office.

Prepared by: D. B. Jackson
Staff Engineer
September 2, 1998

REAMES COM 2 (SLB 10/8/97)



REAMES COM 2 (SLB 10/8/97)

